

LEATHER IZAR

Bovine of European origin, with a distressed vintage effect. This high quality article is obtained starting with nubuck leather, which is slightly levelled with aniline and hand rubbed to give an aged effect. It has a very warm and silky feel.



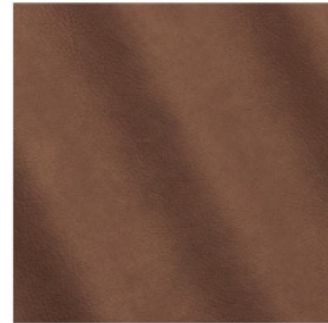
PAPYRUS



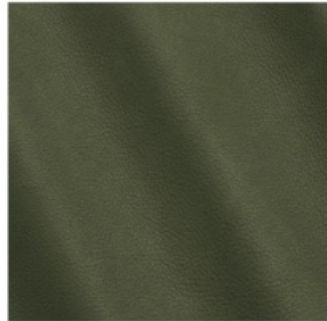
CAMEL



TERRA



ANTILOPE



BIRCH



CIMENT



PIETRA



CARBONE

TECHNICAL INFORMATION

Composition: 100% Leather, Tear strength - Single edge tear: UNI EN ISO 3377-1, Measurement Unit N, Guaranteed ≥ 20
Colour fastness to rubbing - Dry 50 Cycles: UNI EN ISO 11640:1998, Measurement Unit Grey Scale, Guaranteed $\geq 3/4$
Colour fastness to rubbing - Wet 20 Cycles: UNI EN ISO 11640:1998, Measurement Unit Grey Scale, Guaranteed ≥ 3
Colour fastness to rubbing - Sweat 20 Cycles: UNI EN ISO 11640:1998 ISO 11641 pH8, Measurement Unit Grey Scale, Guaranteed ≥ 3 ,
Flexing endurance - Dry 50.000 Cycles: UNI EN ISO 5402, Guaranteed No damage
Color fastness to artificial light - Exposition energy 16.000 kJ/sqm: UNI EN ISO 105 B02 (MET. 5), Measurement Unit Blue Scale,
Guaranteed ≥ 3 , Burning behaviour to cigarette and match flame: BS 5852:1979 BS EN 1021-1-2:2006, Guaranteed Pass
Please note that colours displayed may vary slightly from the actual product. Therefore, we recommend requesting samples before ordering.

LEATHER IZAR



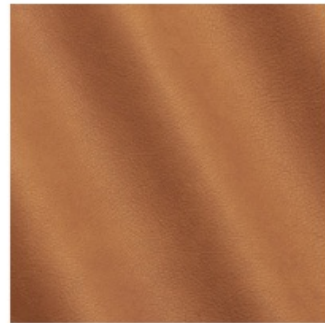
LIGHT



NUAGE



OLD COPPER



TAN



YAM

TECHNICAL INFORMATION

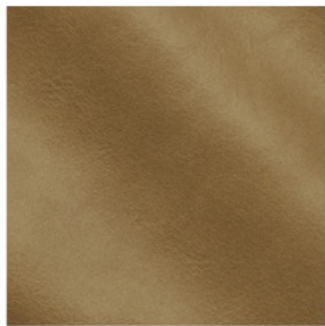
Composition: 100% Leather, Tear strength - Single edge tear: UNI EN ISO 3377-1, Measurement Unit N, Guaranteed ≥ 20
Colour fastness to rubbing - Dry 50 Cycles: UNI EN ISO 11640:1998, Measurement Unit Grey Scale, Guaranteed $\geq 3/4$
Colour fastness to rubbing - Wet 20 Cycles: UNI EN ISO 11640:1998, Measurement Unit Grey Scale, Guaranteed ≥ 3
Colour fastness to rubbing - Sweat 20 Cycles: UNI EN ISO 11640:1998 ISO 11641 pH8, Measurement Unit Grey Scale, Guaranteed ≥ 3 ,
Flexing endurance - Dry 50.000 Cycles: UNI EN ISO 5402, Guaranteed No damage
Color fastness to artificial light - Exposition energy 16.000 kj/sqm: UNI EN ISO 105 B02 (MET. 5), Measurement Unit Blue Scale,
Guaranteed ≥ 3 , Burning behaviour to cigarette and match flame: BS 5852:1979 BS EN 1021-1-2:2006, Guaranteed Pass
Please note that colours displayed may vary slightly from the actual product. Therefore, we recommend requesting samples before ordering.

LEATHER KALAUSI

Aniline cowhide 100% leather, produced by an accurate metal-free organic tanning process, made on bullskins of European origin. The retannage is done with tannins, the leather is vacuum dried and finished with waxes and anilines. The leather conveys uniqueness of character, the round and compact structure lends to highlighting the refinement of a silky hand, enhanced by a transparent look with soft pull-up effect.



TAUPE



TORTORA



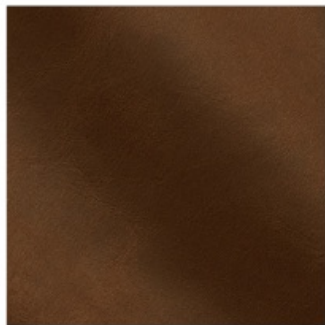
CARAMEL



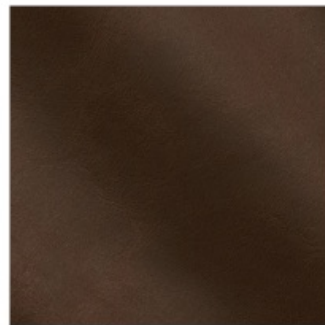
SADDLE



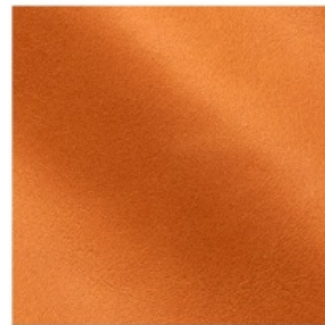
WENGE



EBANO



TOBAC

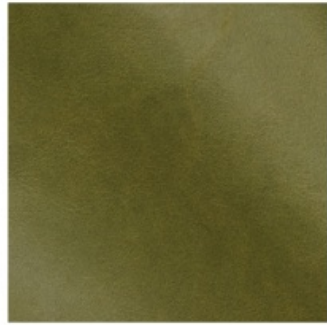


APRICOT

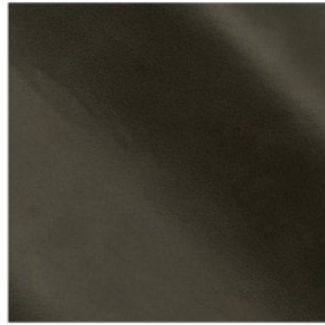
TECHNICAL INFORMATION

Composition: 100% Leather, Tear strenght - single edge tear: UNI EN ISO 3377-1, Measurement Unit N, Guaranteed ≥ 20 Colour fastness to rubbing - Dry 50 Cycles: UNI EN ISO 11640:1998, Measurement Unit - Grey Scale, Guaranteed ≥ 3 Colour fastness to rubbing - Wet 10 Cycles: UNI EN ISO 11640:1998, Measurement Unit - Grey Scale, Guaranteed ≥ 3 Color fastness to artificial light - Exposition energy 16.000 kj/sqm: UNI EN ISO 105 B02 (MET. 5), Measurement Unit - Grey Scale, Guaranteed ≥ 2 , Burning behaviour to cigarette and match flame: BS EN 1021-1-2 : 2006, BS 5852:1979, Guaranteed Pass Please note that colours displayed may vary slightly from the actual product. Therefore, we recommend requesting samples before ordering.

LEATHER KALAUSI



EMERALD



OXIDE



INK

TECHNICAL INFORMATION

Composition: 100% Leather, Tear strength - single edge tear: UNI EN ISO 3377-1, Measurement Unit N, Guaranteed ≥ 20 Colour fastness to rubbing - Dry 50 Cycles: UNI EN ISO 11640:1998, Measurement Unit - Grey Scale, Guaranteed ≥ 3 Colour fastness to rubbing - Wet 10 Cycles: UNI EN ISO 11640:1998, Measurement Unit - Grey Scale, Guaranteed ≥ 3 Color fastness to artificial light - Exposition energy 16.000 kJ/sqm: UNI EN ISO 105 B02 (MET. 5), Measurement Unit - Grey Scale, Guaranteed ≥ 2 , Burning behaviour to cigarette and match flame: BS EN 1021-1-2 : 2006, BS 5852:1979, Guaranteed Pass Please note that colours displayed may vary slightly from the actual product. Therefore, we recommend requesting samples before ordering.

LEATHER LIBERTAS

Libertas is a nubuckleather with a warm and charming look. A flat anilinhide has been lightly sanded to obtain a discrete write effect. Even at the first contact the customer is surprised by the pleasant touch.



501



502



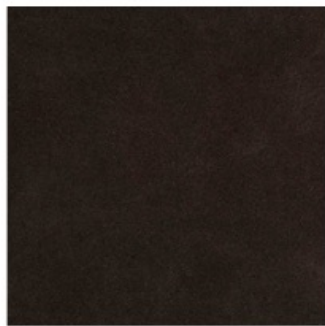
503



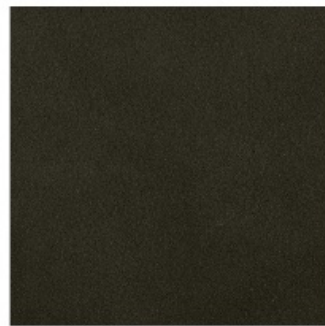
504



505



506



512



514

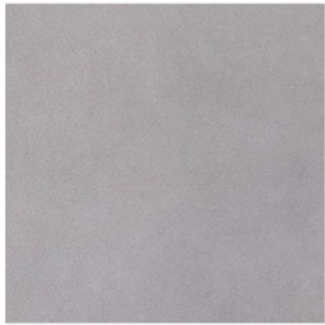
TECHNICAL INFORMATION

Composition: 100% Leather, Origin: South-german bullhides, Thickness: 1.2/1.4 mm, Treatment: Nubuck
Please note that colours displayed may vary slightly from the actual product. Therefore, we recommend requesting samples before ordering.

LEATHER LIBERTAS



515



517

TECHNICAL INFORMATION

Composition: 100% Leather, Origin: South-german bullhides, Thickness: 1.2/1.4 mm, Treatment: Nubuck
Please note that colours displayed may vary slightly from the actual product. Therefore, we recommend requesting samples before ordering.

LEATHER MAASYM

Maasym is the finest that can be achieved in leather. A silky soft feel, exceptional transparency and, of course, 100% natural grain make this leather a true work of art. Colour variations within one hide, neck creases, insect bites and closed scars enhance the authenticity of this leather.



702

TECHNICAL INFORMATION

Composition: 100% Leather, Origin: European bullhides, Thickness: 1.4/1.6 mm, Treatment: pure aniline
Please note that colours displayed may vary slightly from the actual product. Therefore, we recommend requesting samples before ordering.

LEATHER MARU

Bovine of European origin in Nabuk finishing, natural grain. This leather has a grain which varies in structure and offers outstanding comfort. A hide is selected at random from every batch of finished leather. Aniline dyed, finished with high quality oils. Suede look, soft and velvet touch. The possible presence of any imperfections testify the authenticity and the natural look of pure aniline leather.



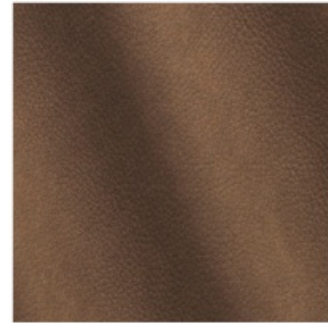
CHALK



DOESKIN



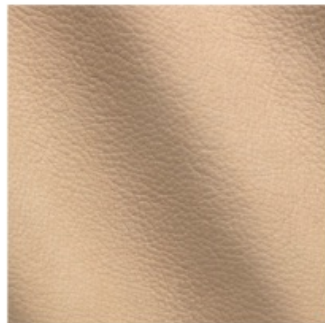
CAQUI



CHOCOLATE FOREST



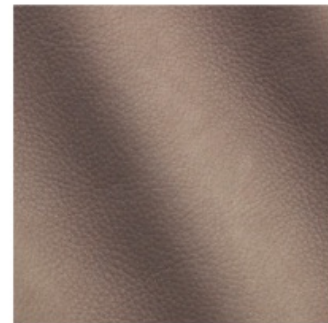
CONCRETE



CANGAROO



ELEFANT



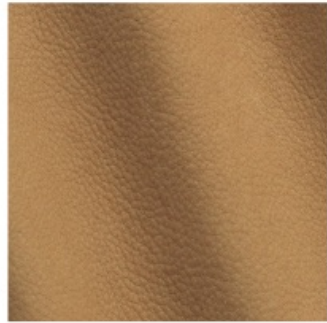
VISION

TECHNICAL INFORMATION

Composition: 100% Leather, Tear strength - single edge tear: UNI EN ISO 3377-1, Measurement Unit N, Guaranteed ≥ 20 Colour fastness to rubbing - Dry 50 Cycles: UNI EN ISO 11640:1998, Measurement Unit - Grey Scale, Guaranteed ≥ 3 Colour fastness to rubbing - Wet 10 Cycles: UNI EN ISO 11640:1998, Measurement Unit - Grey Scale, Guaranteed ≥ 3 Color fastness to artificial light - Exposition energy 16.000 kJ/sqm: UNI EN ISO 105 B02 (MET. 5), Measurement Unit - Grey Scale, Guaranteed ≥ 2 , Burning behaviour to cigarette and match flame: BS EN 1021-1-2 : 2006, BS 5852:1979, Guaranteed Pass Please note that colours displayed may vary slightly from the actual product. Therefore, we recommend requesting samples before ordering.



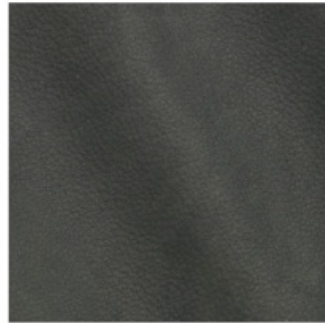
LEATHER MARU



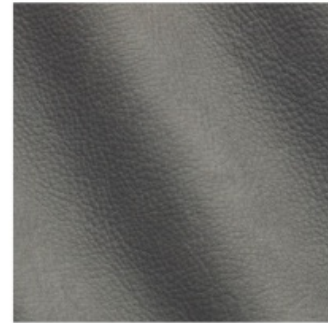
CARAMEL



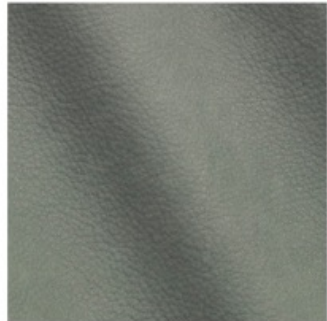
CUOIO



ARDESIA



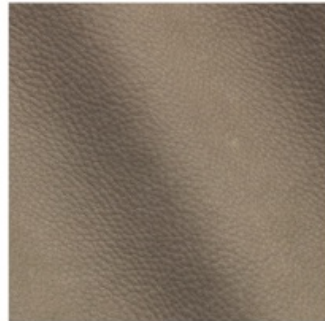
EMATITE



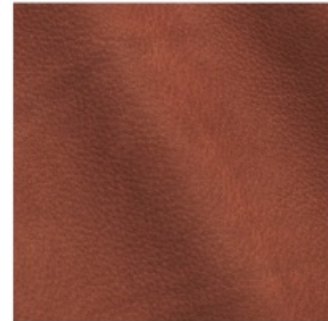
GRAFITE



PLOMO



GENERE



LUCKY

TECHNICAL INFORMATION

Composition: 100% Leather, Tear strenght - single edge tear: UNI EN ISO 3377-1, Measurement Unit N, Guaranteed ≥ 20 Colour fastness to rubbing - Dry 50 Cycles: UNI EN ISO 11640:1998, Measurement Unit - Grey Scale, Guaranteed ≥ 3 Colour fastness to rubbing - Wet 10 Cycles: UNI EN ISO 11640:1998, Measurement Unit - Grey Scale, Guaranteed ≥ 3 Color fastness to artificial light - Exposition energy 16.000 kj/sqm: UNI EN ISO 105 B02 (MET. 5), Measurement Unit - Grey Scale, Guaranteed ≥ 2 , Burning behaviour to cigarette and match flame: BS EN 1021-1-2 : 2006, BS 5852:1979, Guaranteed Pass Please note that colours displayed may vary slightly from the actual product. Therefore, we recommend requesting samples before ordering.



BOUCLÉ ESTHER

A coarse linen weave for a very natural bouclette effect.



CREME



BEIGE

TECHNICAL INFORMATION

Type - Bouclé, Utilisation - Normal use, Martindale > 25 000 T, Composition - 79 % Wool 21 % Cotton, Width 124 cm - 48,81 inch, Weight 1161 gr / m²
Certifications: EN1021-1-2, BS5852 Cigarette & match test, NFPA 260-Class 1, CRIB 5 in conjunction with suitable combustion modified foam
Notes & Informations: Reinforced stitching recommended to avoid fraying at seams
Please note that colours displayed may vary slightly from the actual product. Therefore, we recommend requesting samples before ordering.



BOUCLÉ KALKUTA

A bouclé that intertwines wool and viscose in an uneven texture of loops and curls, inspired by precious astrakhan furs. With its soft and bulky hand-feel, this fabric is ideal for upholstery destined for an intensive use.



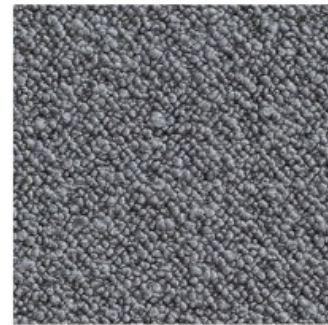
001 IVORY



002 DUNA



004 PERLA



005 ANTRACITE



006 CHARCOAL



007 ECUME



008 NUDE

TECHNICAL INFORMATION

Type - Bouclé, Utilisation - Normal use, Martindale > 25 000 T, Composition - 79 % Wool 21 % Cotton, Width 124 cm - 48,81 inch, Weight 1161 gr / m²
Certifications: EN1021-1-2, BS5852 Cigarette & match test, NFPA 260-Class 1, CRIB 5 in conjunction with suitable combustion modified foam
Notes & Informations: Reinforced stitching recommended to avoid fraying at seams
Please note that colours displayed may vary slightly from the actual product. Therefore, we recommend requesting samples before ordering.



BOUCLÉ POTTER

This warm and resistant wool bouclé is full of spontaneity and softness. The delicate colour palette, including natural tones and darker shades, enhances the intrinsic nature of wool.



001 TESTA DI MORO



002 TOPO



003 TORTORA



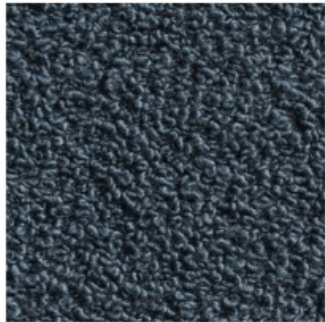
005 BREBIS



007 NUVOLE



009 LODEN



010 ARDESIA

TECHNICAL INFORMATION

Type - Bouclé, Utilisation - Normal use, Martindale 40000 T, Composition - 70% Wool 15% Cotton 10% Polyamide 5% Polyester, Width 140 cm, Weight 1040 gr / m²
Certifications: Oekotex, FR -Italy Class 11M, FR -Europe EN 1021 1&2, FR -USA CALIFORNIA TB117, FR - UK BS5852 CIGAR. TEST, FR - UK BS5852 CIG/MATCH, FR -UK GB 5852 CRIB 5, FR -USA NFPA 260
Please note that colours displayed may vary slightly from the actual product. Therefore, we recommend requesting samples before ordering.



HAIRY & TEXTURED

INKA

Inka is a soft, enveloping fabric in Alpaca Suri and wool. Suri is the rarest breed of alpaca, and produces an incredibly soft, smooth, lustrous fibre. For Incas, alpaca is used on the right side, while the reverse is wool. The resulting material is invitingly tactile, presenting a nap surface raised using gentle finishing techniques. For upholstery, curtains and decor.



TAUPE



CAFE' NOIR



BIANCORE



MARTORA

TECHNICAL INFORMATION

Type - Weave, Utilisation - Intensive use, Martindale 8 000, Composition - 75% Alpaca 25% Virgin Wool, Width 150 cm, Weight 680gr / ml

Kindly be aware that the colors shown may slightly differ from the actual product. We suggest requesting samples prior to placing an order.



HAIRY & TEXTURED

KHAN

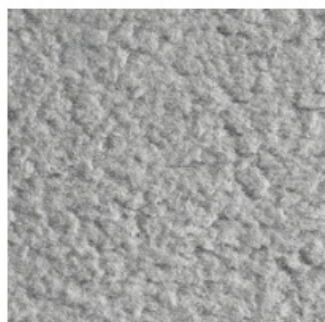
A velvet of thick, sumptuous, and irresistible alpaca wool. Khan evokes the latter's cuddly sensations: the typical curl makes it irregular and textural, while enhancing the essential range of colours that reflect the very nature of wool. Soft and thick, with water-repellent treatment.



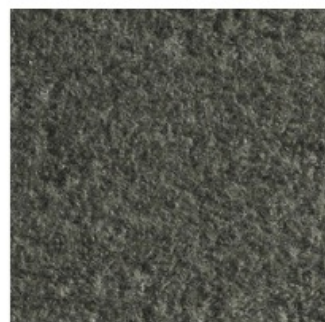
001 DAINO



002 PECORA



003 KOALA



004 MILITAIRE



005 ORSO BRUNO

TECHNICAL INFORMATION

Type - Velvet, Utilisation - Normal use, Martindale 10.000 T, Composition - 37% Virgin Wool25% Alpaca20% Cotton18% Polyamide,
Width 132 cm, Weight 699 gr / ml
Please note that colours displayed may vary slightly from the actual product. Therefore, we recommend requesting samples
before ordering.



HAIRY & TEXTURED MINIMA

A chenille of abstract inspiration and velvety voluptuousness is poised harmoniously between expressive delicacy and textural exuberance. The smooth round yarn is of high quality and endowed with remarkable softness, thanks to a special finishing process. Cozy, soft and compact, this fabric is interpreted in a palette of natural and delicate shades. Suitable for intensive upholstery use.



001 AVORIO



002 CIPRIA



003 LINO

TECHNICAL INFORMATION

Type - Bouclé fabrics, Utilisation - Intensive use, Martindale 48 000 T, Composition - 48% Viscose, 23% Cotton, 20% Linen, 4% Acrylic, 4% Polyamide, 1% Polyester, Width 130 cm, Weight 1516 g/ m²
Please note that colours displayed may vary slightly from the actual product. Therefore, we recommend requesting samples before ordering.



HAIRY & TEXTURED

MOUNTAINEER

Mountaineer is an iconic cashmere fabric designed for upholstery, curtains and décor, delivering the natural softness, inviting touch and welcoming warmth of cashmere. The mélangé shades are refined and versatile.



BLEND ZEN



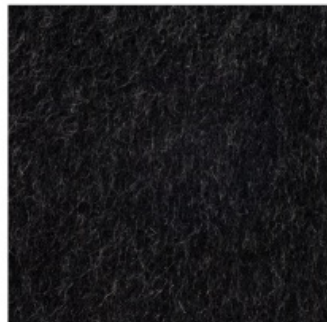
SIATUNGA GOLD



SITATUNGA



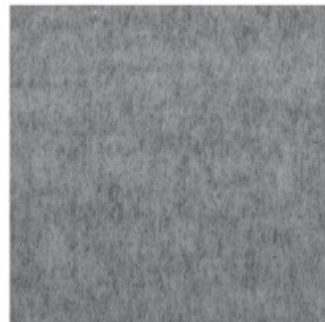
SAMPRESS



DARK MARENGO



MARENGO



LIGHT MARENGO



GASCONE

TECHNICAL INFORMATION

Type - Cashmere , Utilisation - Intensive use, Martindale 10.000 T, Composition - 100% - ounCashmere, Width 150 cm, Weight 480 gr /ml
Kindly be aware that the colors shown may slightly differ from the actual product. We suggest requesting samples prior to placing an order.

HAIRY & TEXTURED MOUNTAINEER



MUSCHIO



OLIVO



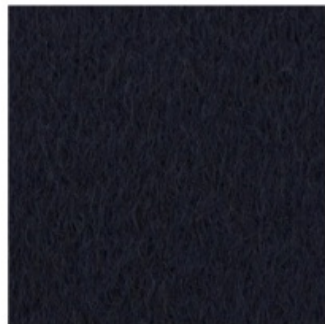
GINGER



GINGEMBAR



PIMENT DOUX



MAJESTIC BLUE



LO VAT

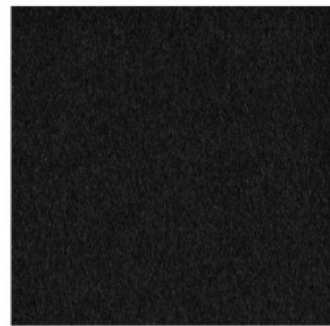
TECHNICAL INFORMATION

Type - Cashmere , Utilisation - Intensive use, Martindale 10.000 T, Composition - 100% - ounCashmere, Width 150 cm, Weight 480 gr / ml
Kindly be aware that the colors shown may slightly differ from the actual product. We suggest requesting samples prior to placing an order.

HAIRY & TEXTURED

OPHILIA ALPACA

The rarest and most precious Alpaca, sourced in Peru and spun in Italy, brings life to this soft velour making it smooth and luminous. The finest Baby Alpaca yarns are woven on a special shuttle loom and are delicately brushed, embellishing their extraordinary beauty. The colour palette ranges from intense and vibrant colours, mélange hues, and natural colours, finding the perfect expression for each shade. With a soft and warm touch and an elegant and full-bodied drape, it is ideal for curtain and upholstery applications.



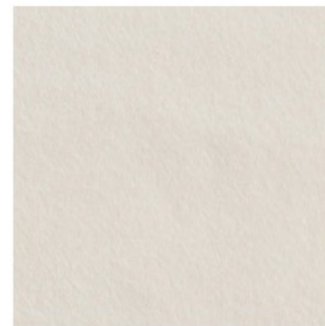
001 QUASINERO



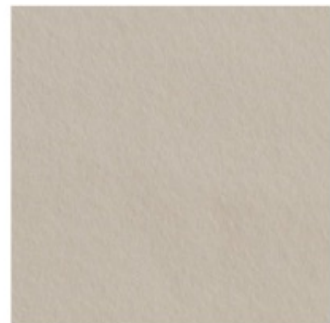
002 LUPO



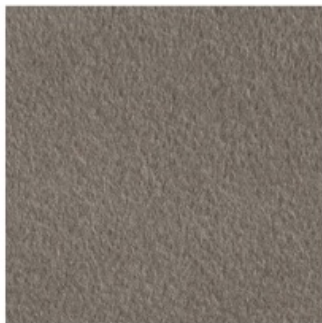
003 ARGENTO



004 BANGUISE



005 SABBIA



006 CASTORO



007 CAMEL



009 CELADON

TECHNICAL INFORMATION

Type - Alpaca Velour, Utilisation - Normal use, Martindale 15000 T, Composition - 75% Alpaca 25% Wool, Width 145 cm, Weight 548 gr / ml
Please note that colours displayed may vary slightly from the actual product. Therefore, we recommend requesting samples before ordering.

HAIRY & TEXTURED

OPHILIA ALPACA



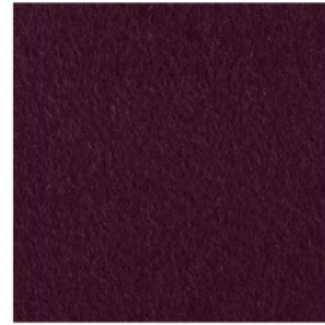
010 LODEN



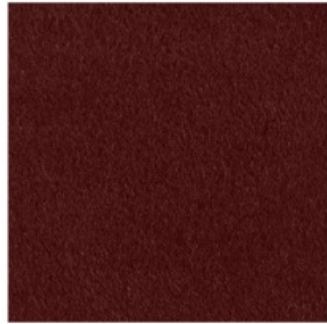
011 STORM BLUE



012 FORESTA



013 PRUGNA



014 RED FOX



015 TABACCO



016 MOUTARDE



017 NATURALE

TECHNICAL INFORMATION

Type - Alpaca Velour, Utilisation - Normal use, Martindale 15000 T, Composition - 75% Alpaca 25% Wool, Width 145 cm, Weight 548 gr / ml
Please note that colours displayed may vary slightly from the actual product. Therefore, we recommend requesting samples before ordering.

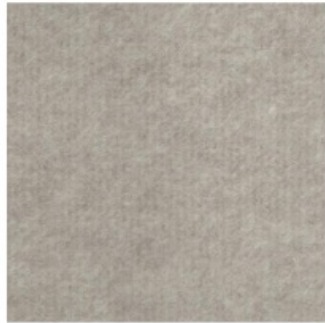
HAIRY & TEXTURED

RALFE

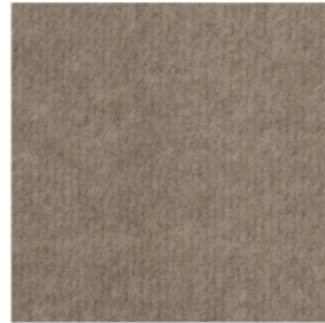
Ralfe is soft, furry, sexy and fun. Once home, it is time to cocoon in the tenderness of mohair wool. Feral extensive palette of colors ranges from the sober to the playful, from burgundy, camel and gray to joyous sorbet tints. Very resistant, it is ideal for upholstery.



AVOIRO



MASTICE



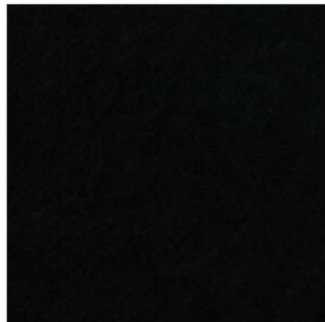
PIETRA



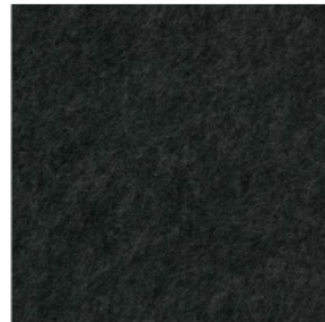
TERRA



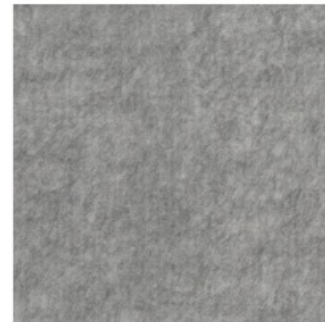
PALMARIA



NERO



ANTRACITE



GRIGIO

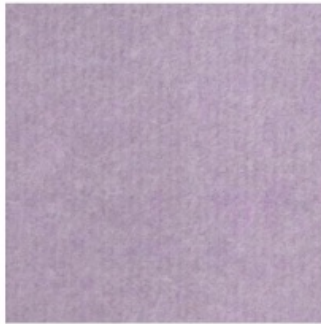
TECHNICAL INFORMATION

Type - Hairy, Utilisation - Intensive use, Martindale 32 000 T, Composition - 14% Mohair 14% Wool 28% Cotton 36% Polyester 8% Polyamide, Width 155 cm, Weight 1000 g/ ml, Pilling 3/4 (scale1-5), Quality Certification A17308
Kindly be aware that the colors shown may slightly differ from the actual product. We suggest requesting samples prior to placing an order.

HAIRY & TEXTURED RALFE



CIPRIA



GLICINE

TECHNICAL INFORMATION

Type - Hairy, Utilisation - Intensive use, Martindale 32 000 T, Composition - 14% Mohair 14% Wool 28% Cotton 36% Polyester 8% Polyamide, Width 155 cm, Weight 1000 g/ ml, Pilling 3/4 (scale1-5), Quality Certification A17308
Kindly be aware that the colors shown may slightly differ from the actual product. We suggest requesting samples prior to placing an order.

VELVET

HAUTE ALPACA

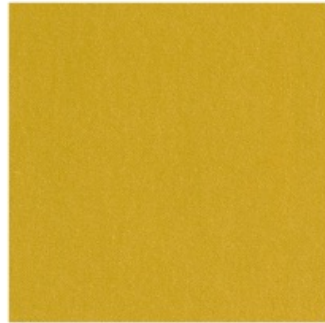
Finest alpaca wool velvet of timeless allure. With its deep pile and warm caressing feel, this fabric is snug and irresistible. The subtle melange effect is fruit of outstanding savoir-faire in the colouring of materials, involving a 3-colour yarn-dyeing process prior to spinning. The lavish colour palette enhances the essence of the fibres, with inclusions of the more classic shades of wool and other more personalized accents. An extremely soft fabric.



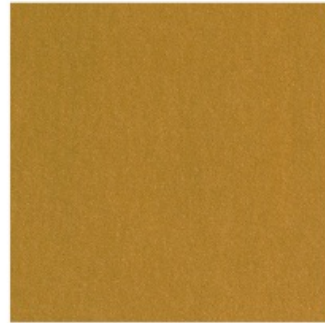
001 BORDEAUX



002 AUBERGINE



003 MAIS



004 MOUTARDE



005 JADE



006 OLIVE



007 LEPROTTO



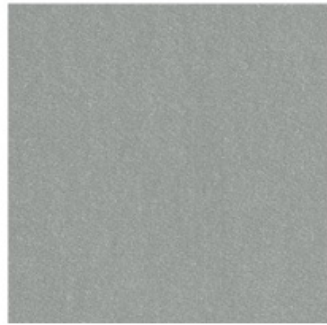
008 DAINO

TECHNICAL INFORMATION

Type - Viscose, Utilisation - Intensive use, Martindale 35.000 T, Composition - 41% Wool28% Alpaca16% Cotton11% Polyester4%, Width 140 cm, Weight 887 gr / ml
Please note that colours displayed may vary slightly from the actual product. Therefore, we recommend requesting samples before ordering.

VELVET

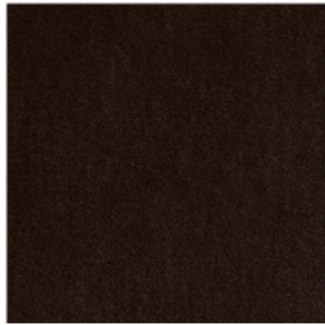
HAUTE ALPACA



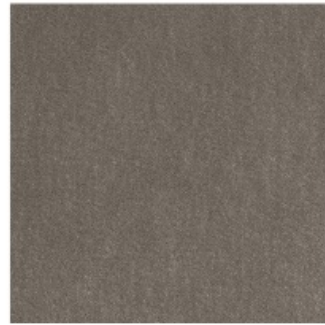
009 KOALA



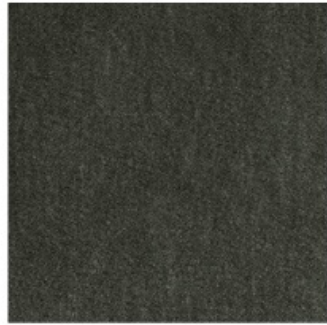
010 NEBELUNG



011 ORSO BRUNO



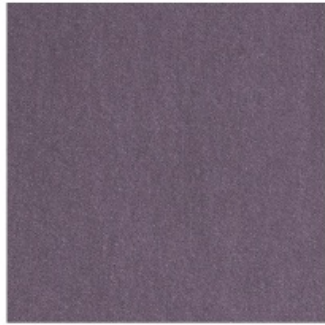
012 LUPO



013 MILITAIRE



014 TABACCO



015 LAVANDA



016 CELADON

TECHNICAL INFORMATION

Type - Viscose, Utilisation - Intensive use, Martindale 35.000 T, Composition - 41% Wool28% Alpaca16% Cotton11% Polyester4%, Width 140 cm, Weight 887 gr / ml

Please note that colours displayed may vary slightly from the actual product. Therefore, we recommend requesting samples before ordering.

VELVET

HAUTE ALPACA



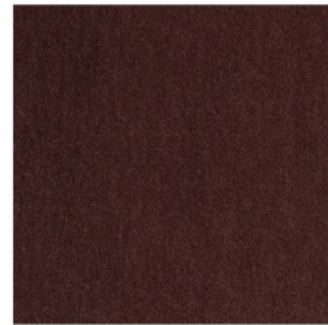
017 LAGO



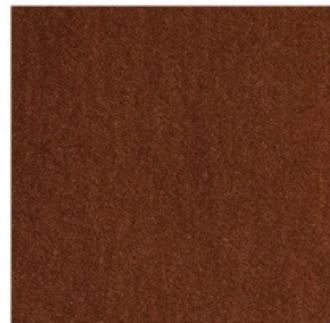
018 NOTTE



019 BLEU DE PRUSSE



020 TEGOLE



021 SCOIATTOLO



023 NUDE



024 BILIARDO



025 DEEP FOREST

TECHNICAL INFORMATION

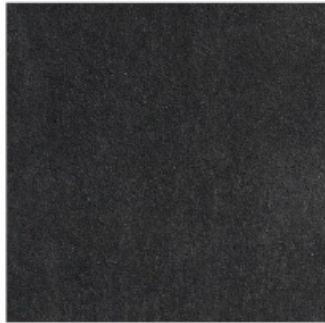
Type - Viscose, Utilisation - Intensive use, Martindale 35.000 T, Composition - 41% Wool28% Alpaca16% Cotton11% Polyester4%, Width 140 cm, Weight 887 gr / ml
Please note that colours displayed may vary slightly from the actual product. Therefore, we recommend requesting samples before ordering.

VELVET IVANO

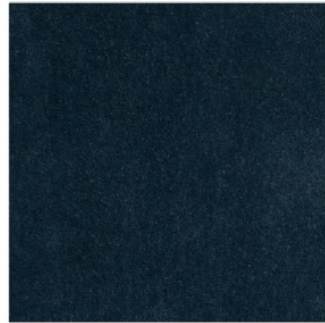
Ultra-soft velvet in Kid Mohair: a fine precious fiber, lustrous and impurity-free, obtained from the first shear of the Angora goat. It combines tactile and aesthetic qualities with easy care and making up, thanks to the careful choice of pile density and height. This velvet is naturally durable and has fire-retardant properties.



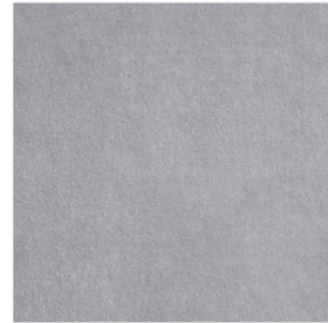
001 QUASINERO



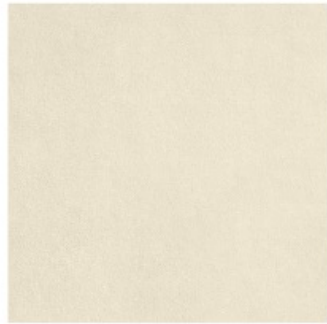
002 ANTRACITE



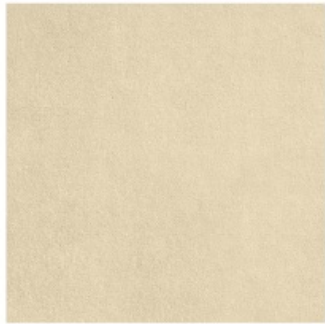
003 STORM BLUE



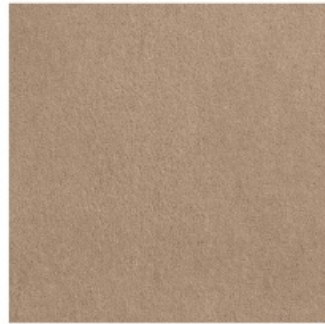
004 PERLA



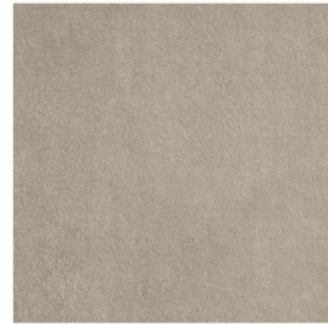
005 BANQUISE



006 ORSO POLARE



007 CAMEL



008 CORDA

TECHNICAL INFORMATION

Type - Mohair Velvet, Utilisation - Normal use, Martindale 80000 T, Composition - 62% Mohair 38% Cotton, Width 135 cm, Weight 923 gr / ml
Certifications: FR -Italy Class 11M, FR -Europe EN 1021 1&2, FR -USA CALIFORNIA TB117, FR - UK BS5852 CIGAR. TEST, FR - UK BS5852 CIG/MATCH, FR -UK GB 5852 CRIB 5
Please note that colours displayed may vary slightly from the actual product. Therefore, we recommend requesting samples before ordering.

VELVET IVANO



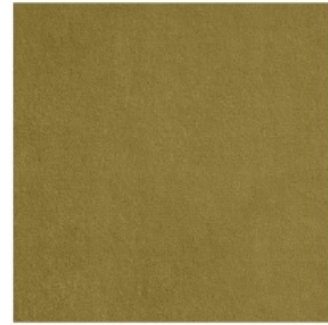
009 TAUPE



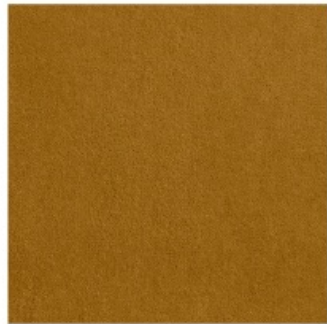
010 MILITAIRE



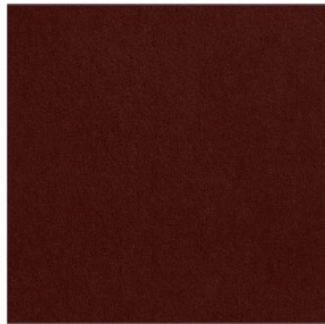
011 MOUSSE



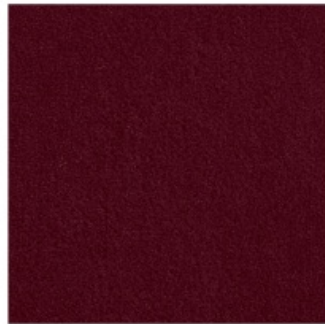
012 LICHEN



013 MOUTARDE



014 MOSTO COTTO



015 BORDEAUX



016 ZUCCA

TECHNICAL INFORMATION

Type - Mohair Velvet, Utilisation - Normal use, Martindale 80000 T, Composition - 62% Mohair 38% Cotton, Width 135 cm, Weight 923 gr / ml

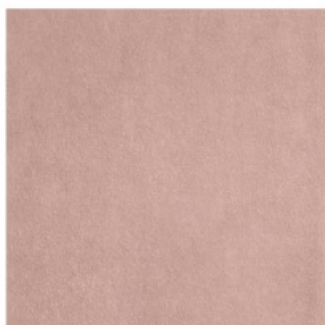
Certifications: FR -Italy Class 11M, FR -Europe EN 1021 1&2, FR -USA CALIFORNIA TB117, FR - UK BS5852 CIGAR. TEST, FR - UK BS5852 CIG/MATCH, FR -UK GB 5852 CRIB 5

Please note that colours displayed may vary slightly from the actual product. Therefore, we recommend requesting samples before ordering.

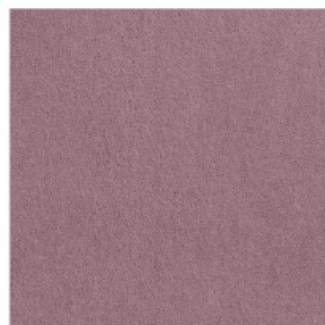
VELVET IVANO



017 TERRACOTTA



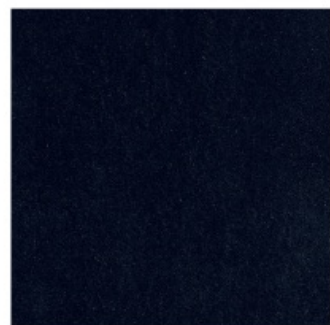
018 TENDER ROSE



019 LILLA



020 PRUGNA



021 NAVY



022 BLEU NATTIER



023 ACQUA



025 VERDE BOTTIGLIA

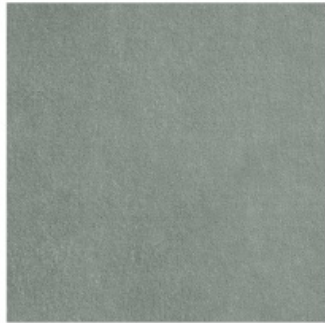
TECHNICAL INFORMATION

Type - Mohair Velvet, Utilisation - Normal use, Martindale 80000 T, Composition - 62% Mohair 38% Cotton, Width 135 cm, Weight 923 gr / ml
Certifications: FR -Italy Class 11M, FR -Europe EN 1021 1&2, FR -USA CALIFORNIA TB117, FR - UK BS5852 CIGAR. TEST, FR - UK BS5852 CIG/MATCH, FR -UK GB 5852 CRIB 5
Please note that colours displayed may vary slightly from the actual product. Therefore, we recommend requesting samples before ordering.

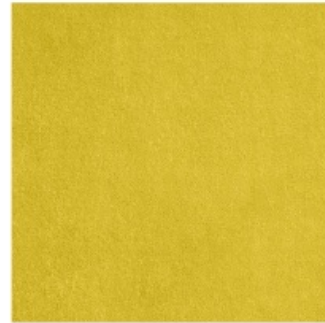
VELVET IVANO



025 VERDE BOTTIGLIA



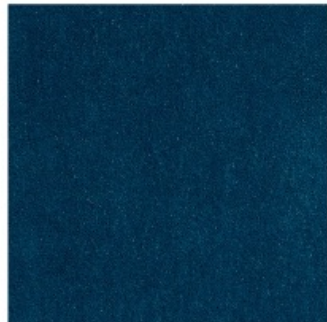
026 GRIS CENDRE



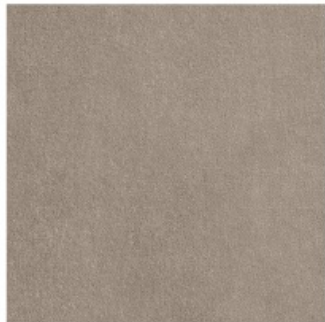
027 SOUFRE



028 TABACCO



030 BLEU JEANS



031 LINO

TECHNICAL INFORMATION

Type - Mohair Velvet, Utilisation - Normal use, Martindale 80000 T, Composition - 62% Mohair 38% Cotton, Width 135 cm, Weight 923 gr / ml
Certifications: FR -Italy Class 11M, FR -Europe EN 1021 1&2, FR -USA CALIFORNIA TB117, FR - UK BS5852 CIGAR. TEST, FR - UK BS5852 CIG/MATCH, FR -UK GB 5852 CRIB 5
Please note that colours displayed may vary slightly from the actual product. Therefore, we recommend requesting samples before ordering.