

# LEATHER IZAR

Bovine of European origin, with a distressed vintage effect. This high quality article is obtained starting with nubuck leather, which is slightly levelled with aniline and hand rubbed to give an aged effect. It has a very warm and silky feel.



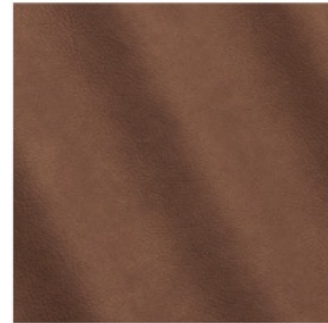
PAPYRUS



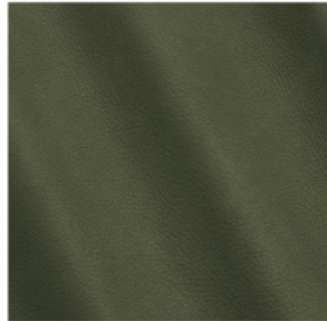
CAMEL



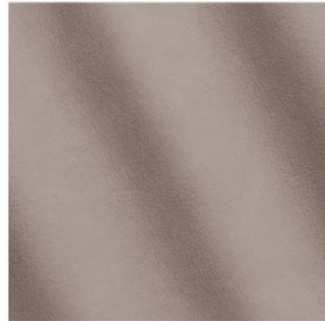
TERRA



ANTILOPE



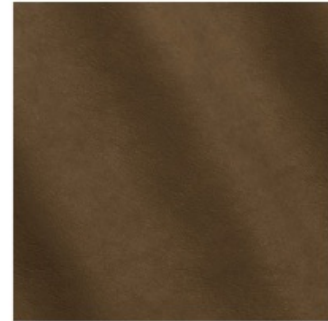
BIRCH



CIMENT



PIETRA



CARBONE

## TECHNICAL INFORMATION

Composition: 100% Leather, Tear strength - Single edge tear: UNI EN ISO 3377-1, Measurement Unit N, Guaranteed  $\geq 20$   
Colour fastness to rubbing - Dry 50 Cycles: UNI EN ISO 11640:1998, Measurement Unit Grey Scale, Guaranteed  $\geq 3/4$   
Colour fastness to rubbing - Wet 20 Cycles: UNI EN ISO 11640:1998, Measurement Unit Grey Scale, Guaranteed  $\geq 3$   
Colour fastness to rubbing - Sweat 20 Cycles: UNI EN ISO 11640:1998 ISO 11641 pH8, Measurement Unit Grey Scale, Guaranteed  $\geq 3$ ,  
Flexing endurance - Dry 50.000 Cycles: UNI EN ISO 5402, Guaranteed No damage  
Color fastness to artificial light - Exposition energy 16.000 kJ/sqm: UNI EN ISO 105 B02 (MET. 5), Measurement Unit Blue Scale,  
Guaranteed  $\geq 3$ , Burning behaviour to cigarette and match flame: BS 5852:1979 BS EN 1021-1-2:2006, Guaranteed Pass  
Please note that colours displayed may vary slightly from the actual product. Therefore, we recommend requesting samples before ordering.

# LEATHER IZAR



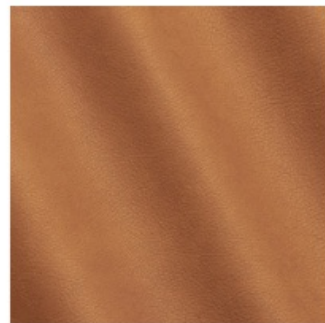
LIGHT



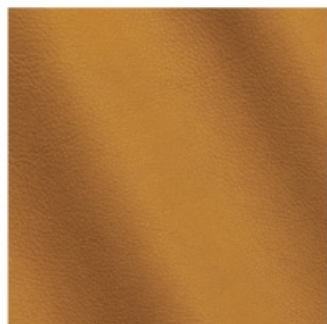
NUAGE



OLD COPPER



TAN



YAM

## TECHNICAL INFORMATION

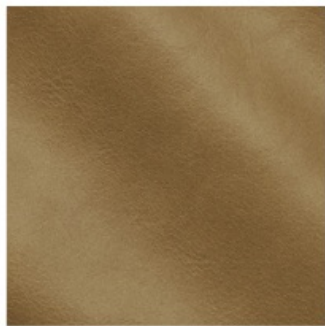
Composition: 100% Leather, Tear strength - Single edge tear: UNI EN ISO 3377-1, Measurement Unit N, Guaranteed  $\geq 20$   
Colour fastness to rubbing - Dry 50 Cycles: UNI EN ISO 11640:1998, Measurement Unit Grey Scale, Guaranteed  $\geq 3/4$   
Colour fastness to rubbing - Wet 20 Cycles: UNI EN ISO 11640:1998, Measurement Unit Grey Scale, Guaranteed  $\geq 3$   
Colour fastness to rubbing - Sweat 20 Cycles: UNI EN ISO 11640:1998 ISO 11641 pH8, Measurement Unit Grey Scale, Guaranteed  $\geq 3$ ,  
Flexing endurance - Dry 50.000 Cycles: UNI EN ISO 5402, Guaranteed No damage  
Color fastness to artificial light - Exposition energy 16.000 kj/sqm: UNI EN ISO 105 B02 (MET. 5), Measurement Unit Blue Scale,  
Guaranteed  $\geq 3$ , Burning behaviour to cigarette and match flame: BS 5852:1979 BS EN 1021-1-2:2006, Guaranteed Pass  
Please note that colours displayed may vary slightly from the actual product. Therefore, we recommend requesting samples before ordering.

# LEATHER KALAUSI

Aniline cowhide 100% leather, produced by an accurate metal-free organic tanning process, made on bullskins of European origin. The retannage is done with tannins, the leather is vacuum dried and finished with waxes and anilines. The leather conveys uniqueness of character, the round and compact structure lends to highlighting the refinement of a silky hand, enhanced by a transparent look with soft pull-up effect.



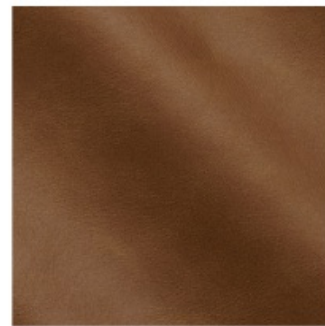
TAUPE



TORTORA



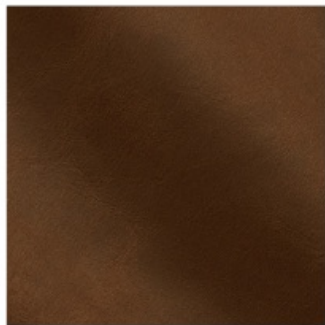
CARAMEL



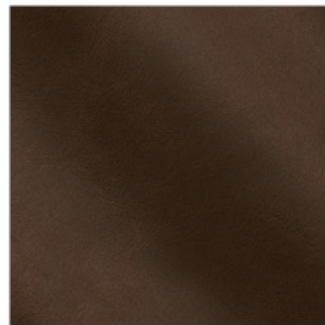
SADDLE



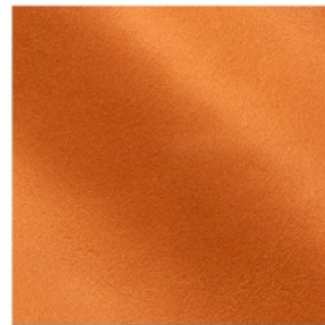
WENGE



EBANO



TOBAC



APRICOT

## TECHNICAL INFORMATION

Composition: 100% Leather, Tear strenght - single edge tear: UNI EN ISO 3377-1, Measurement Unit N, Guaranteed  $\geq 20$  Colour fastness to rubbing - Dry 50 Cycles: UNI EN ISO 11640:1998, Measurement Unit - Grey Scale, Guaranteed  $\geq 3$  Colour fastness to rubbing - Wet 10 Cycles: UNI EN ISO 11640:1998, Measurement Unit - Grey Scale, Guaranteed  $\geq 3$  Color fastness to artificial light - Exposition energy 16.000 kj/sqm: UNI EN ISO 105 B02 (MET. 5), Measurement Unit - Grey Scale, Guaranteed  $\geq 2$ , Burning behaviour to cigarette and match flame: BS EN 1021-1-2 : 2006, BS 5852:1979, Guaranteed Pass Please note that colours displayed may vary slightly from the actual product. Therefore, we recommend requesting samples before ordering.

# LEATHER KALAUSI



EMERALD



OXIDE



INK

## TECHNICAL INFORMATION

Composition: 100% Leather, Tear strength - single edge tear: UNI EN ISO 3377-1, Measurement Unit N, Guaranteed  $\geq 20$  Colour fastness to rubbing - Dry 50 Cycles: UNI EN ISO 11640:1998, Measurement Unit - Grey Scale, Guaranteed  $\geq 3$  Colour fastness to rubbing - Wet 10 Cycles: UNI EN ISO 11640:1998, Measurement Unit - Grey Scale, Guaranteed  $\geq 3$  Color fastness to artificial light - Exposition energy 16.000 kJ/sqm: UNI EN ISO 105 B02 (MET. 5), Measurement Unit - Grey Scale, Guaranteed  $\geq 2$ , Burning behaviour to cigarette and match flame: BS EN 1021-1-2 : 2006, BS 5852:1979, Guaranteed Pass Please note that colours displayed may vary slightly from the actual product. Therefore, we recommend requesting samples before ordering.

# LEATHER LIBERTAS

Libertas is a nubuckleather with a warm and charming look. A flat anilinhide has been lightly sanded to obtain a discrete write effect. Even at the first contact the customer is surprised by the pleasant touch.



501



502



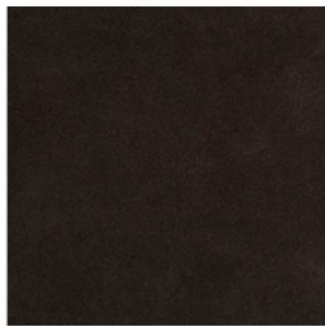
503



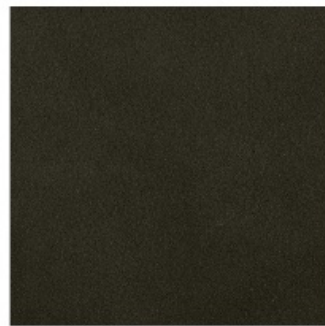
504



505



506



512



514

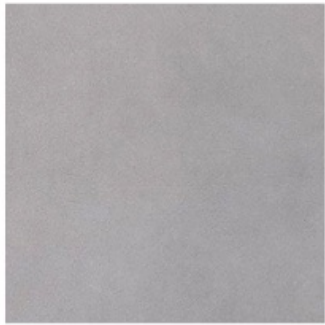
## TECHNICAL INFORMATION

Composition: 100% Leather, Origin: South-german bullhides, Thickness: 1.2/1.4 mm, Treatment: Nubuck  
Please note that colours displayed may vary slightly from the actual product. Therefore, we recommend requesting samples before ordering.

# LEATHER LIBERTAS



515



517

## TECHNICAL INFORMATION

Composition: 100% Leather, Origin: South-german bullhides, Thickness: 1.2/1.4 mm, Treatment: Nubuck  
Please note that colours displayed may vary slightly from the actual product. Therefore, we recommend requesting samples before ordering.

# LEATHER MAASYM

Maasym is the finest that can be achieved in leather. A silky soft feel, exceptional transparency and, of course, 100% natural grain make this leather a true work of art. Colour variations within one hide, neck creases, insect bites and closed scars enhance the authenticity of this leather.



702

## TECHNICAL INFORMATION

Composition: 100% Leather, Origin: European bullhides, Thickness: 1.4/1.6 mm, Treatment: pure aniline  
Please note that colours displayed may vary slightly from the actual product. Therefore, we recommend requesting samples before ordering.

# LEATHER MARU

Bovine of European origin in Nabuk finishing, natural grain. This leather has a grain which varies in structure and offers outstanding comfort. A hide is selected at random from every batch of finished leather. Aniline dyed, finished with high quality oils. Suede look, soft and velvet touch. The possible presence of any imperfections testify the authenticity and the natural look of pure aniline leather.



CHALK



DOESKIN



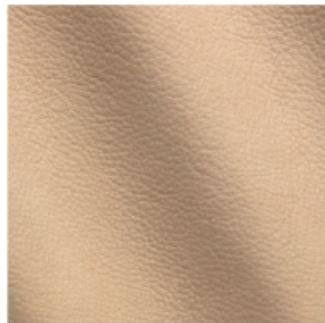
CAQUI



CHOCOLATE FOREST



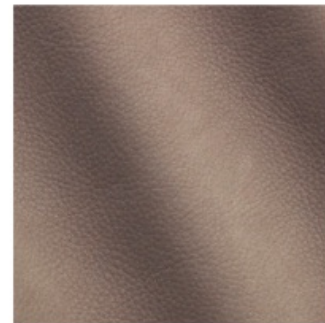
CONCRETE



CANGAROO



ELEFANT



VISION

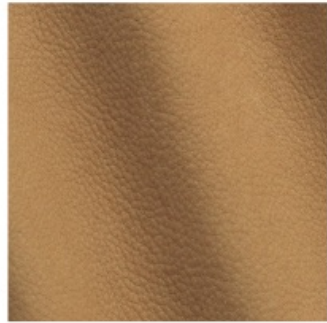
## TECHNICAL INFORMATION

Composition: 100% Leather, Tear strength - single edge tear: UNI EN ISO 3377-1, Measurement Unit N, Guaranteed  $\geq 20$  Colour fastness to rubbing - Dry 50 Cycles: UNI EN ISO 11640:1998, Measurement Unit - Grey Scale, Guaranteed  $\geq 3$  Colour fastness to rubbing - Wet 10 Cycles: UNI EN ISO 11640:1998, Measurement Unit - Grey Scale, Guaranteed  $\geq 3$  Color fastness to artificial light - Exposition energy 16.000 kj/sqm: UNI EN ISO 105 B02 (MET. 5), Measurement Unit - Grey Scale, Guaranteed  $\geq 2$ , Burning behaviour to cigarette and match flame: BS EN 1021-1-2 : 2006, BS 5852:1979, Guaranteed Pass Please note that colours displayed may vary slightly from the actual product. Therefore, we recommend requesting samples before ordering.





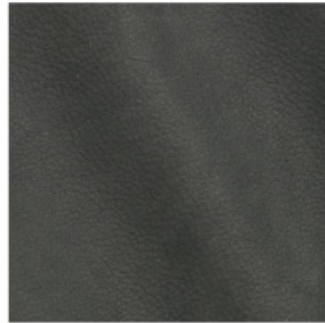
# LEATHER MARU



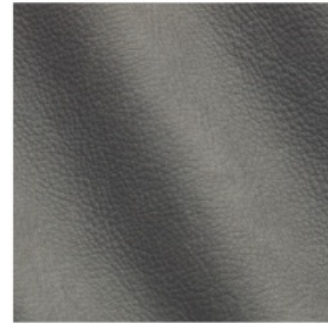
CARAMEL



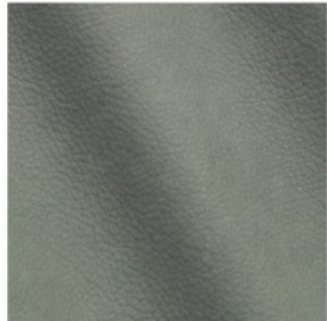
CUOIO



ARDESIA



EMATITE



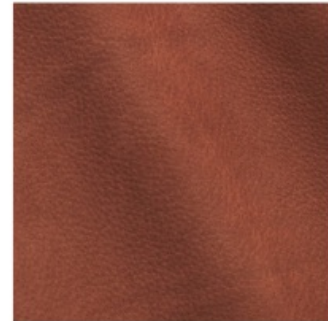
GRAFITE



PLOMO



GENERE



LUCKY

## TECHNICAL INFORMATION

Composition: 100% Leather, Tear strenght - single edge tear: UNI EN ISO 3377-1, Measurement Unit N, Guaranteed  $\geq 20$  Colour fastness to rubbing - Dry 50 Cycles: UNI EN ISO 11640:1998, Measurement Unit - Grey Scale, Guaranteed  $\geq 3$  Colour fastness to rubbing - Wet 10 Cycles: UNI EN ISO 11640:1998, Measurement Unit - Grey Scale, Guaranteed  $\geq 3$  Color fastness to artificial light - Exposition energy 16.000 kj/sqm: UNI EN ISO 105 B02 (MET. 5), Measurement Unit - Grey Scale, Guaranteed  $\geq 2$ , Burning behaviour to cigarette and match flame: BS EN 1021-1-2 : 2006, BS 5852:1979, Guaranteed Pass Please note that colours displayed may vary slightly from the actual product. Therefore, we recommend requesting samples before ordering.



# BOUCLÉ AGATHA

Made with long, noble fibers that have been brushed after weaving, the loops of Agatha confer elegant restraint with their delicacy and incomparable softness.



NATUREL

## TECHNICAL INFORMATION

Type - Hairy fabrics Bouclé fabrics Fibres douces, Utilisation - Normal use, Martindale > 25 000 T, Composition - 60 % Mohair 21 % Cotton 15 % Wool 4 % Polyester, Width 120 cm - 47,24 inch, Weight 1404 gr / m<sup>2</sup>

Certifications: BS5852 Cigarette & match test, EN1021-1-2 in conjunction with suitable combustion modified foam, NFPA 260-Class 1, CRIB 5 in conjunction with suitable combustion modified foam

Notes & Informations: Patina with use, Cutting for approval recommended, Boucle 100% wool, Reinforced stitching recommended to avoid fraying at seams

Kindly be aware that the colors shown may slightly differ from the actual product. We suggest requesting samples prior to placing an order.



# BOUCLÉ KALKUTA

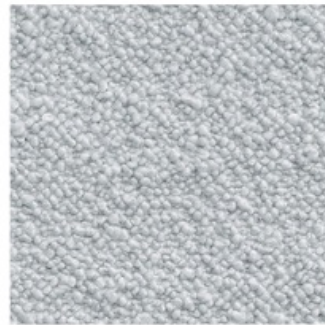
A bouclé that intertwines wool and viscose in an uneven texture of loops and curls, inspired by precious astrakhan furs. With its soft and bulky hand-feel, this fabric is ideal for upholstery destined for an intensive use.



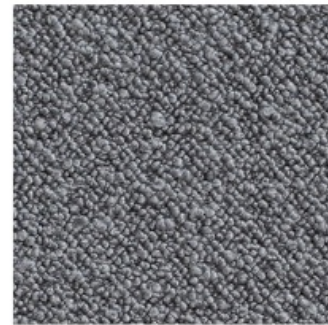
001 IVORY



002 DUNA



004 PERLA



005 ANTRACITE



006 CHARCOAL



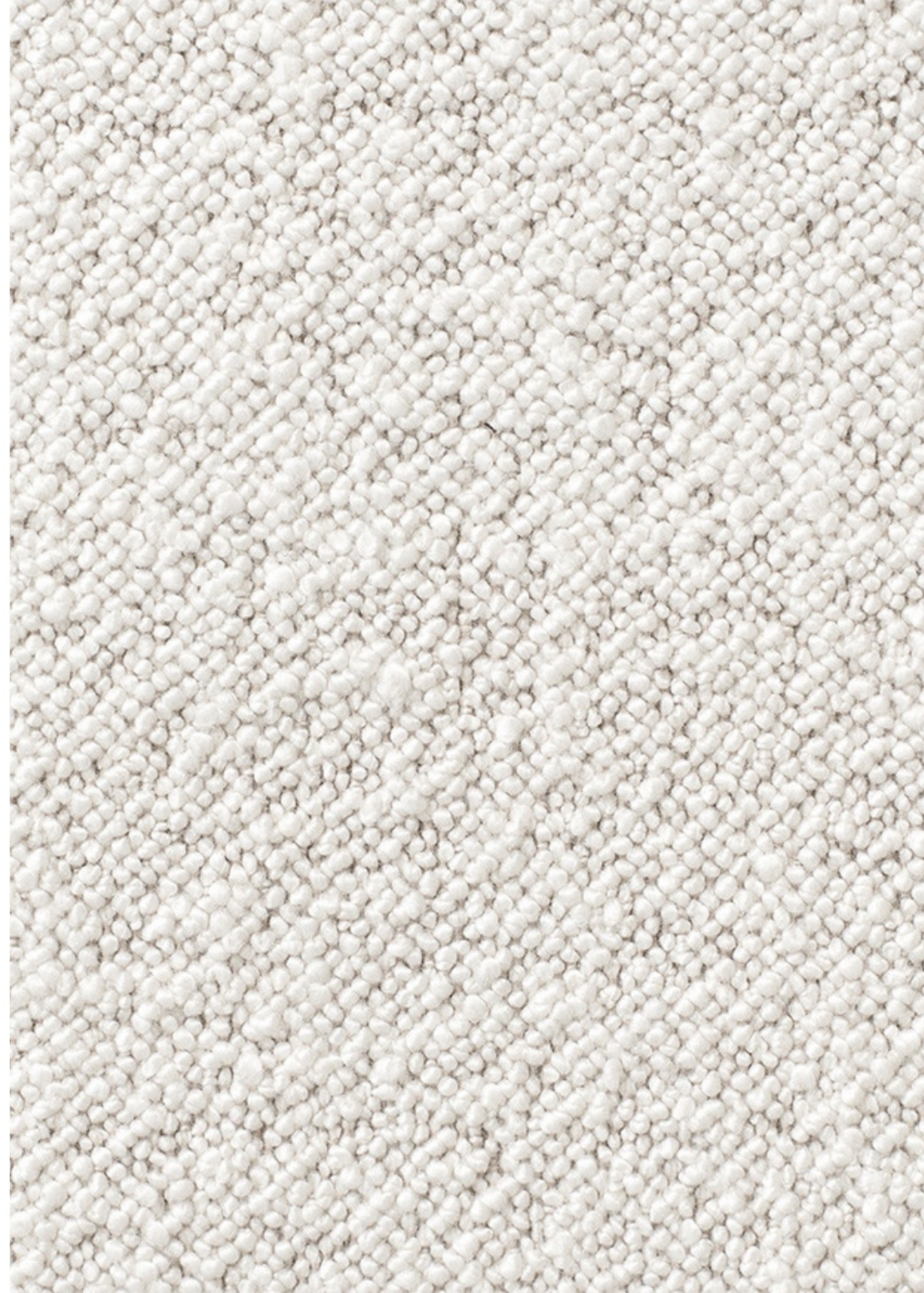
007 ECUME



008 NUDE

## TECHNICAL INFORMATION

Type - Bouclé, Utilisation - Normal use, Martindale > 25 000 T, Composition - 79 % Wool 21 % Cotton, Width 124 cm - 48,81 inch, Weight 1161 gr / m<sup>2</sup>  
Certifications: EN1021-1-2, BS5852 Cigarette & match test, NFPA 260-Class 1, CRIB 5 in conjunction with suitable combustion modified foam  
Notes & Informations: Reinforced stitching recommended to avoid fraying at seams  
Please note that colours displayed may vary slightly from the actual product. Therefore, we recommend requesting samples before ordering.



# BOUCLÉ

## K2

This cashmere bouclé is in a world of its own. Exceptional in both the quality of its yarn and the finesse of its weaving, it evokes the vaporous, downy mien of clouds. Its fancy yarn provides it with volume, as well as irregularities that give it added richness. A prodigious tactile experience, an invitation to curl up in comfort.



CHANTILLY



VIGOGNE



BRUME

### TECHNICAL INFORMATION

Type - Cashmere Bouclé, Utilisation - Normal use, Martindale 25000 T, Composition - 36% ALPAGA / 44% CACHEMERE / 10% VIRGIN WOOL / 10% POLYAMID, Width - 130 cm, Weight - 720 g/ml, Pattern - Plain/Tone on tone  
Please note that colours displayed may vary slightly from the actual product. Therefore, we recommend requesting samples before ordering.

# BOUCLÉ LOUISA

A thick wool bouclette for a chic but natural upholstery look.



CREME



PERLE

## TECHNICAL INFORMATION

Type - Bouclé - Plains - Fibres douces, Utilisation - Intensive use, Martindale > 25 000 T, Composition - 41 % Wool 39 % Alpaca 17 % Cotton 3 % Acrylic, Width 133 cm - 52,36 inch, Weight 1328 gr / m<sup>2</sup>  
Certifications: EN1021-1-2, BS5852 Cigarette & match test, NFPA 260-Class 1, CRIB 5 in conjunction with suitable combustion modified foam  
Notes & Informations: Reinforced stitching recommended to avoid fraying at seams  
Please note that colours displayed may vary slightly from the actual product. Therefore, we recommend requesting samples before ordering.



# HAIRY & TEXTURED

## INKA

Inka is a soft, enveloping fabric in Alpaca Suri and wool. Suri is the rarest breed of alpaca, and produces an incredibly soft, smooth, lustrous fibre. For Incas, alpaca is used on the right side, while the reverse is wool. The resulting material is invitingly tactile, presenting a nap surface raised using gentle finishing techniques. For upholstery, curtains and decor.



TAUPE



CAFE' NOIR



BIANCORE



MARTORA

### TECHNICAL INFORMATION

Type - Weave, Utilisation - Intensive use, Martindale 8 000, Composition - 75% Alpaca 25% Virgin Wool, Width 150 cm, Weight 680gr / ml

Kindly be aware that the colors shown may slightly differ from the actual product. We suggest requesting samples prior to placing an order.



# HAIRY & TEXTURED

## KHAN

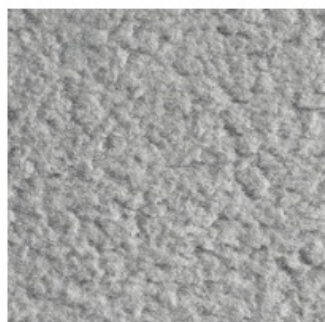
A velvet of thick, sumptuous, and irresistible alpaca wool. Khan evokes the latter's cuddly sensations: the typical curl makes it irregular and textural, while enhancing the essential range of colours that reflect the very nature of wool. Soft and thick, with water-repellent treatment.



001 DAINO



002 PECORA



003 KOALA



004 MILITAIRE



005 ORSO BRUNO

### TECHNICAL INFORMATION

Type - Velvet, Utilisation - Normal use, Martindale 10.000 T, Composition - 37% Virgin Wool25% Alpaca20% Cotton18% Polyamide,  
Width 132 cm, Weight 699 gr / ml  
Please note that colours displayed may vary slightly from the actual product. Therefore, we recommend requesting samples  
before ordering.



# HAIRY & TEXTURED

# MOUNTAINEER

Mountaineer is an iconic cashmere fabric designed for upholstery, curtains and décor, delivering the natural softness, inviting touch and welcoming warmth of cashmere. The mélangé shades are refined and versatile.



BLEND ZEN



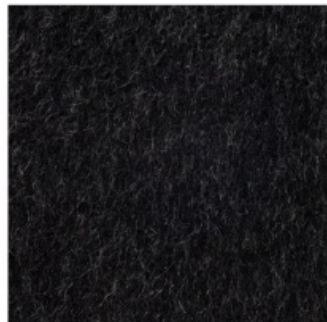
SIATUNGA GOLD



SITATUNGA



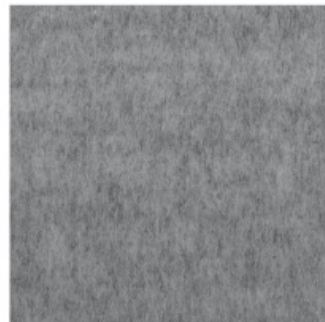
SAMPRASS



DARK MARENGO



MARENGO



LIGHT MARENGO



GASCONE

## TECHNICAL INFORMATION

Type - Cashmere , Utilisation - Intensive use, Martindale 10.000 T, Composition - 100% - ounCashmere, Width 150 cm, Weight 480 gr / ml  
Kindly be aware that the colors shown may slightly differ from the actual product. We suggest requesting samples prior to placing an order.



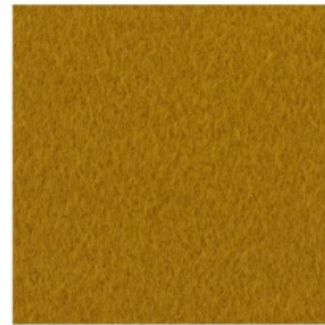
# HAIRY & TEXTURED MOUNTAINEER



MUSCHIO



OLIVO



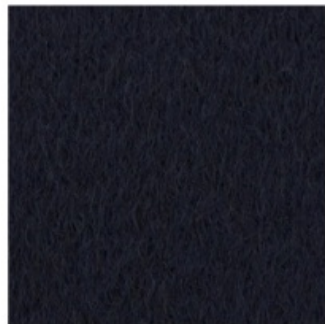
GINGER



GINGEMBAR



PIMENT DOUX



MAJESTIC BLUE



LO VAT

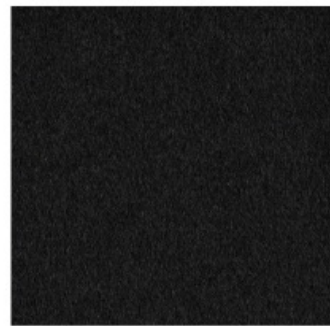
## TECHNICAL INFORMATION

Type - Cashmere , Utilisation - Intensive use, Martindale 10.000 T, Composition - 100% - ounCashmere, Width 150 cm, Weight 480 gr / ml  
Kindly be aware that the colors shown may slightly differ from the actual product. We suggest requesting samples prior to placing an order.

# HAIRY & TEXTURED

## OPHILIA ALPACA

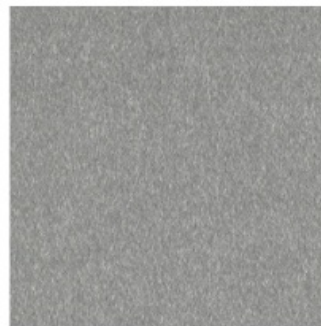
The rarest and most precious Alpaca, sourced in Peru and spun in Italy, brings life to this soft velour making it smooth and luminous. The finest Baby Alpaca yarns are woven on a special shuttle loom and are delicately brushed, embellishing their extraordinary beauty. The colour palette ranges from intense and vibrant colours, mélange hues, and natural colours, finding the perfect expression for each shade. With a soft and warm touch and an elegant and full-bodied drape, it is ideal for curtain and upholstery applications.



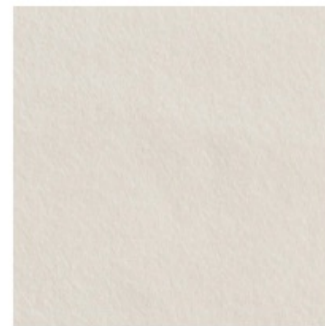
001 QUASINERO



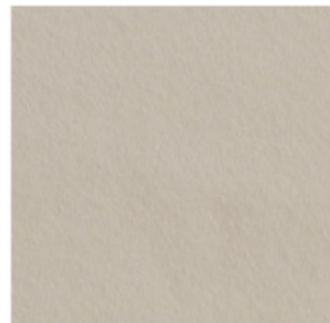
002 LUPO



003 ARGENTO



004 BANGUISE



005 SABBIA



006 CASTORO



007 CAMEL



009 CELADON

### TECHNICAL INFORMATION

Type - Alpaca Velour, Utilisation - Normal use, Martindale 15000 T, Composition - 75% Alpaca 25% Wool, Width 145 cm, Weight 548 gr / ml  
Please note that colours displayed may vary slightly from the actual product. Therefore, we recommend requesting samples before ordering.

# HAIRY & TEXTURED

## OPHILIA ALPACA



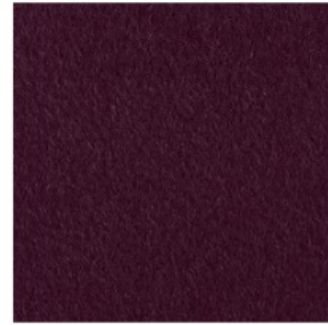
010 LODEN



011 STORM BLUE



012 FORESTA



013 PRUGNA



014 RED FOX



015 TABACCO



016 MOUTARDE



017 NATURALE

### TECHNICAL INFORMATION

Type - Alpaca Velour, Utilisation - Normal use, Martindale 15000 T, Composition - 75% Alpaca 25% Wool, Width 145 cm, Weight 548 gr / ml  
Please note that colours displayed may vary slightly from the actual product. Therefore, we recommend requesting samples before ordering.

# HAIRY & TEXTURED TEDDYFUR

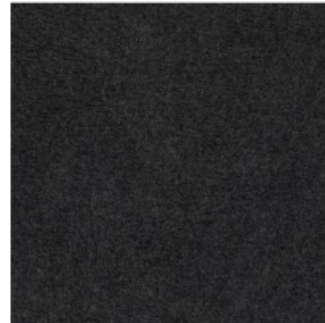
Teddyfur is an original interpretation of one of our signature materials: cashmere. It combines a strand of cashmere produced using specially selected fibre, and silk, and is crafted on circular knitting looms to create its distinctive fur-like consistency. Its natural softness is accentuated by delicate finishing processes. Teddyfur comes in the natural white shade of cashmere, or in a range of colours.



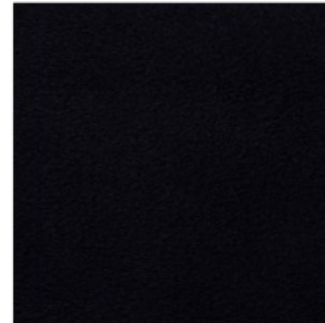
BIANCORE



KASHA



MARENGO



MAJESTIC BLUE

## TECHNICAL INFORMATION

Type - Cashmere, Utilisation - Intensive use, Martindale 30.000 T, Composition - 85%-Cashmere 15%-Silk, Width 145 cm, Weight 830 gr / ml

Kindly be aware that the colors shown may slightly differ from the actual product. We suggest requesting samples prior to placing an order.

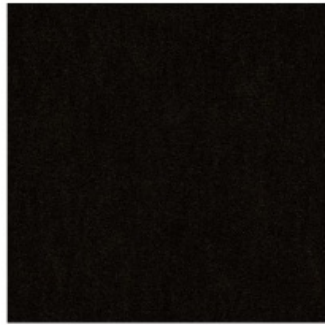
# HAIRY & TEXTURED

## URLA

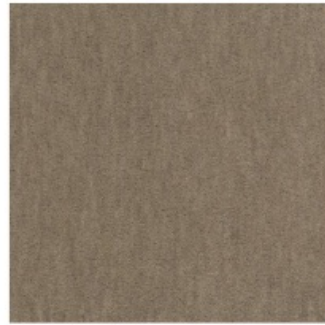
The generosity and the wild beauty of the fleece of Alpaca – one of the finest fibers - is magnified in Urla, an exceptionally fine and dense velvet. Its three variants are just the natural colors of the fleece, without any dyeing process.



AVOIRO



EBANO



TERRA

### TECHNICAL INFORMATION

Type - Fleece/Velvet with alpaca fur, Utilisation - Normal use, Martindale 120 000 T, Composition - 60% Alpaca 40% Cotton, 100% Alpaca, Width 130 cm, Weight 790 gr / ml, Pilling 5/0 (SCALE 1-5)  
Kindly be aware that the colors shown may slightly differ from the actual product. We suggest requesting samples prior to placing an order.

# VELVET GRIZZLY BEAR

Very attractive velvet with long mohair.



IVOIRE



CREME



MIEL



TAUPE



MOKA



CAFE



GRIS SOURIS



NOIR

## TECHNICAL INFORMATION

Type - Plains - Velvets, Utilisation - Intensive use, Martindale 85.000 T, Composition - 65 % Mohair 35 % Cotton, Width 141 cm, Weight 1270 gr / m<sup>2</sup>

Certifications: EN1021-1-2, BS5852 Cigarette & match test, CLASSE UNO, NFPA 260-Class 1, CRIB 5

Notes & Informations: Can be embossed, Pile 100% mohair

Please note that colours displayed may vary slightly from the actual product. Therefore, we recommend requesting samples before ordering.

# VELVET GRIZZLY BEAR



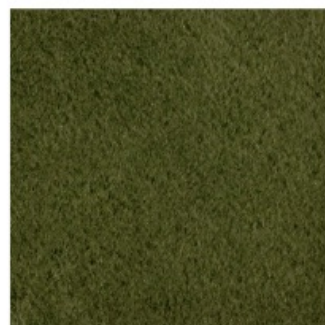
MARINE



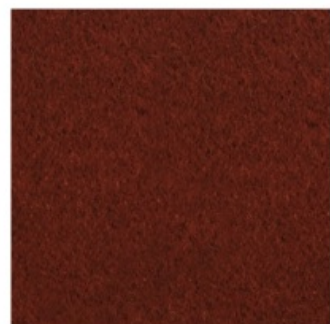
MOUTARDE



OLIVE



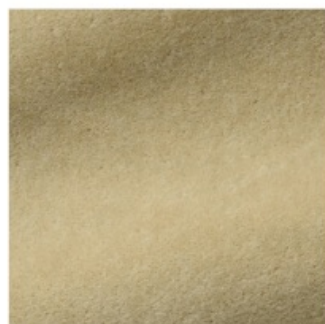
MOUSSE



ACAJOUR



CARMEL



GRAMINEES



BAMBI

## TECHNICAL INFORMATION

Type - Plains - Velvets, Utilisation - Intensive use, Martindale 85.000 T, Composition - 65 % Mohair 35 % Cotton, Width 141 cm, Weight 1270 gr / m<sup>2</sup>

Certifications: EN1021-1-2, BS5852 Cigarette & match test, CLASSE UNO, NFPA 260-Class 1, CRIB 5

Notes & Informations: Can be embossed, Pile 100% mohair

Please note that colours displayed may vary slightly from the actual product. Therefore, we recommend requesting samples before ordering.

# VELVET GRIZZLY BEAR



PERLE



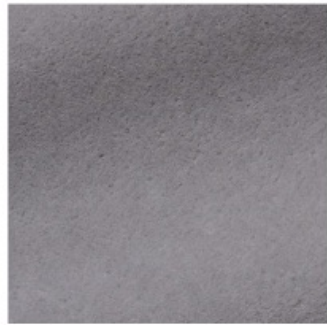
ELEPHANT



HERISSON



DUNE



TOURTERELLE



PLUME



ECORCE



NACRE

## TECHNICAL INFORMATION

Type - Plains - Velvets, Utilisation - Intensive use, Martindale 85.000 T, Composition - 65 % Mohair 35 % Cotton, Width 141 cm, Weight 1270 gr / m<sup>2</sup>

Certifications: EN1021-1-2, BS5852 Cigarette & match test, CLASSE UNO, NFPA 260-Class 1, CRIB 5

Notes & Informations: Can be embossed, Pile 100% mohair

Please note that colours displayed may vary slightly from the actual product. Therefore, we recommend requesting samples before ordering.



# VELVET GRIZZLY BEAR



SABLE



CHOCO

## TECHNICAL INFORMATION

Type - Plains - Velvets, Utilisation - Intensive use, Martindale 85.000 T, Composition - 65 % Mohair 35 % Cotton, Width 141 cm, Weight 1270 gr / m<sup>2</sup>

Certifications: EN1021-1-2, BS5852 Cigarette & match test, CLASSE UNO, NFPA 260-Class 1, CRIB 5

Notes & Informations: Can be embossed, Pile 100% mohair

Please note that colours displayed may vary slightly from the actual product. Therefore, we recommend requesting samples before ordering.

# VELVET

## HAUTE ALPACA

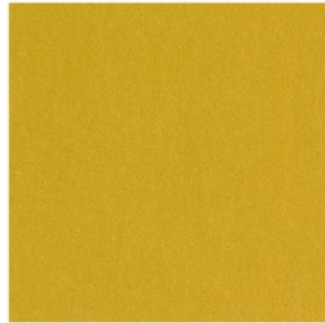
Finest alpaca wool velvet of timeless allure. With its deep pile and warm caressing feel, this fabric is snug and irresistible. The subtle melange effect is fruit of outstanding savoir-faire in the colouring of materials, involving a 3-colour yarn-dyeing process prior to spinning. The lavish colour palette enhances the essence of the fibres, with inclusions of the more classic shades of wool and other more personalized accents. An extremely soft fabric.



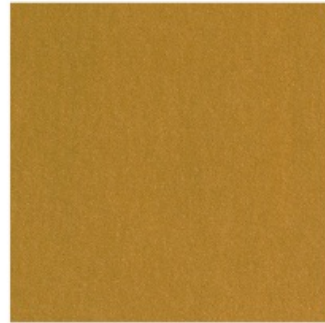
001 BORDEAUX



002 AUBERGINE



003 MAIS



004 MOUTARDE



005 JADE



006 OLIVE



007 LEPROTTO



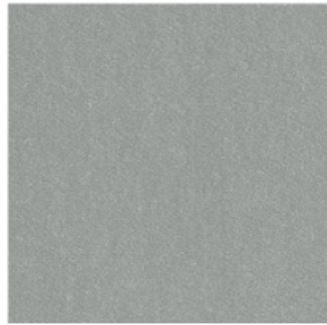
008 DAINO

### TECHNICAL INFORMATION

Type - Viscose, Utilisation - Intensive use, Martindale 35.000 T, Composition - 41% Wool28% Alpaca16% Cotton11% Polyester4%, Width 140 cm, Weight 887 gr / ml  
Please note that colours displayed may vary slightly from the actual product. Therefore, we recommend requesting samples before ordering.

# VELVET

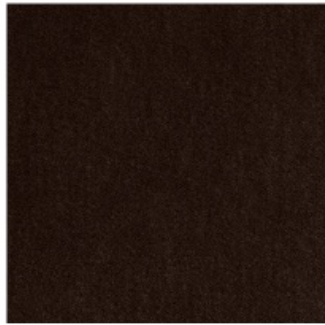
## HAUTE ALPACA



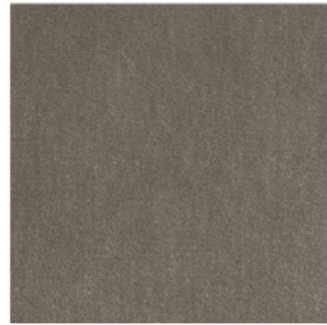
009 KOALA



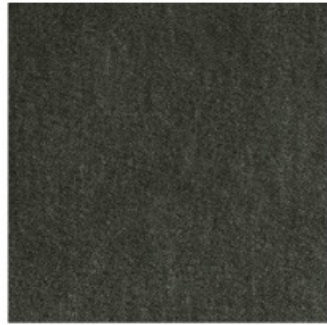
010 NEBELUNG



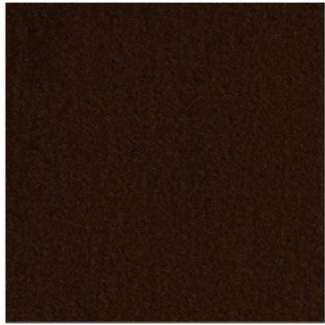
011 ORSO BRUNO



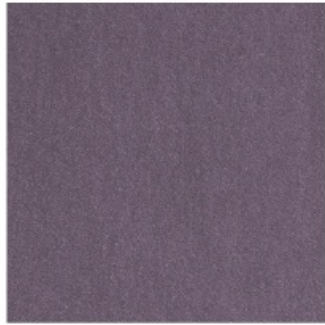
012 LUPO



013 MILITAIRE



014 TABACCO



015 LAVANDA



016 CELADON

### TECHNICAL INFORMATION

Type - Viscose, Utilisation - Intensive use, Martindale 35.000 T, Composition - 41% Wool28% Alpaca16% Cotton11% Polyester4%, Width 140 cm, Weight 887 gr / ml

Please note that colours displayed may vary slightly from the actual product. Therefore, we recommend requesting samples before ordering.

# VELVET

## HAUTE ALPACA



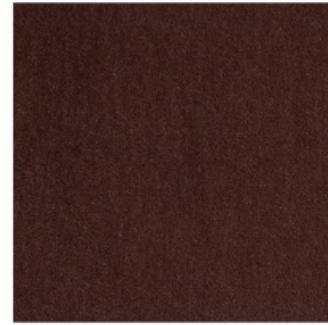
017 LAGO



018 NOTTE



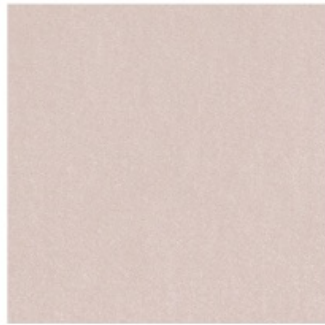
019 BLEU DE PRUSSE



020 TEGOLE



021 SCOIATTOLO



023 NUDE



024 BILIARDO



025 DEEP FOREST

### TECHNICAL INFORMATION

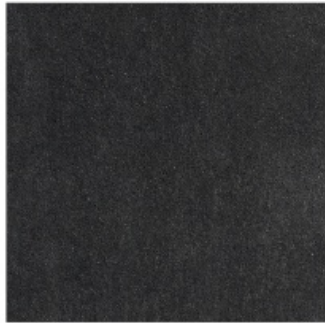
Type - Viscose, Utilisation - Intensive use, Martindale 35.000 T, Composition - 41% Wool28% Alpaca16% Cotton11% Polyester4%, Width 140 cm, Weight 887 gr / ml  
Please note that colours displayed may vary slightly from the actual product. Therefore, we recommend requesting samples before ordering.

# VELVET IVANO

Ultra-soft velvet in Kid Mohair: a fine precious fiber, lustrous and impurity-free, obtained from the first shear of the Angora goat. It combines tactile and aesthetic qualities with easy care and making up, thanks to the careful choice of pile density and height. This velvet is naturally durable and has fire-retardant properties.



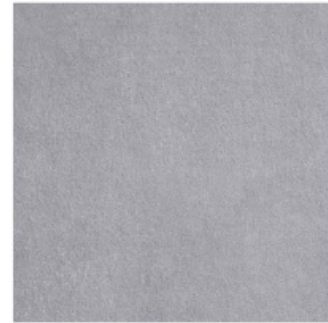
001 QUASINERO



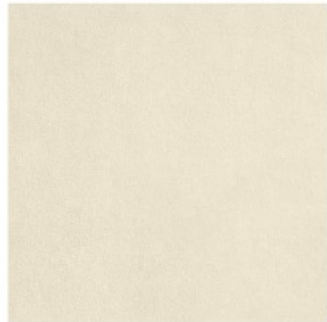
002 ANTRACITE



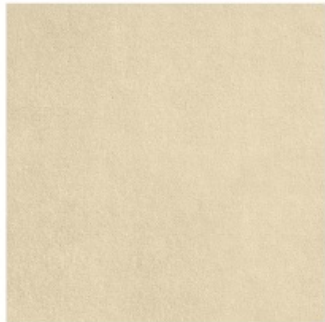
003 STORM BLUE



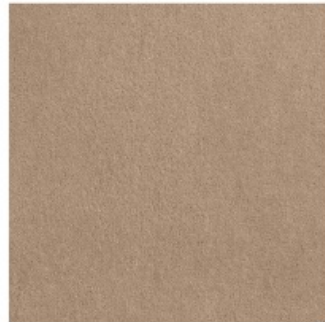
004 PERLA



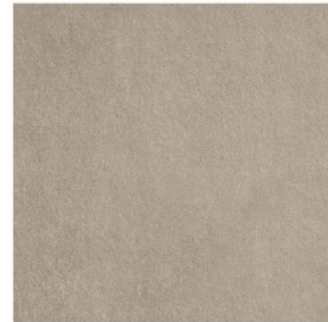
005 BANQUISE



006 ORSO POLARE



007 CAMEL



008 CORDA

## TECHNICAL INFORMATION

Type - Mohair Velvet, Utilisation - Normal use, Martindale 80000 T, Composition - 62% Mohair 38% Cotton, Width 135 cm, Weight 923 gr / ml  
Certifications: FR -Italy Class 11M, FR -Europe EN 1021 1&2, FR -USA CALIFORNIA TB117, FR - UK BS5852 CIGAR. TEST, FR - UK BS5852 CIG/MATCH, FR -UK GB 5852 CRIB 5  
Please note that colours displayed may vary slightly from the actual product. Therefore, we recommend requesting samples before ordering.

# VELVET IVANO



009 TAUPE



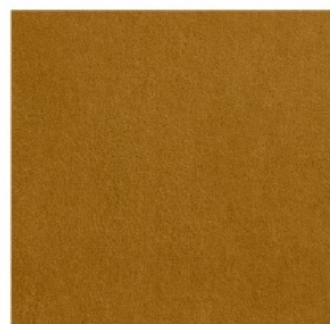
010 MILITAIRE



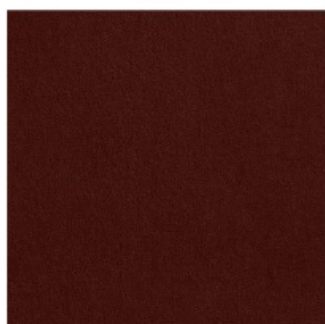
011 MOUSSE



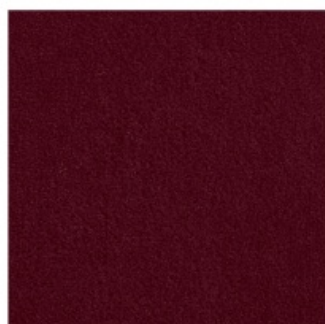
012 LICHEN



013 MOUTARDE



014 MOSTO COTTO



015 BORDEAUX



016 ZUCCA

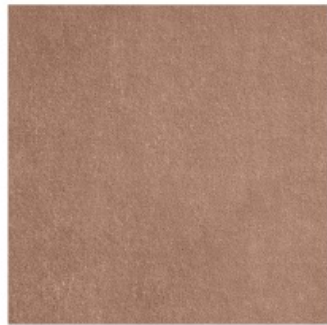
## TECHNICAL INFORMATION

Type - Mohair Velvet, Utilisation - Normal use, Martindale 80000 T, Composition - 62% Mohair 38% Cotton, Width 135 cm, Weight 923 gr / ml

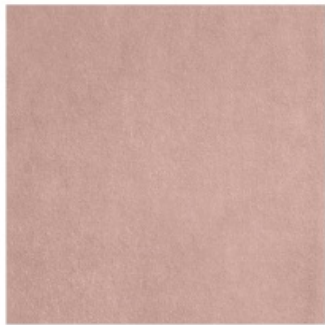
Certifications: FR -Italy Class 11M, FR -Europe EN 1021 1&2, FR -USA CALIFORNIA TB117, FR - UK BS5852 CIGAR. TEST, FR - UK BS5852 CIG/MATCH, FR -UK GB 5852 CRIB 5

Please note that colours displayed may vary slightly from the actual product. Therefore, we recommend requesting samples before ordering.

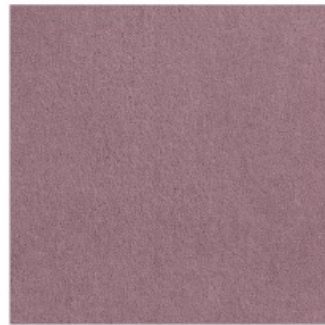
# VELVET IVANO



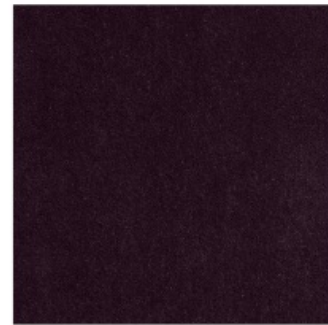
017 TERRACOTTA



018 TENDER ROSE



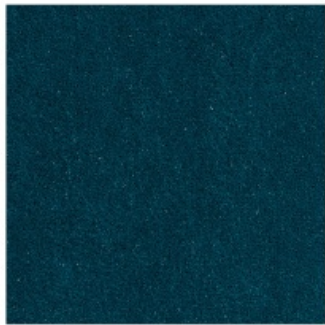
019 LILLA



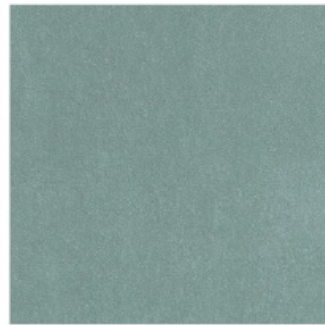
020 PRUGNA



021 NAVY



022 BLEU NATTIER



023 ACQUA



025 VERDE BOTTIGLIA

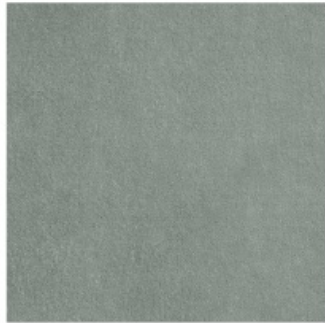
## TECHNICAL INFORMATION

Type - Mohair Velvet, Utilisation - Normal use, Martindale 80000 T, Composition - 62% Mohair 38% Cotton, Width 135 cm, Weight 923 gr / ml  
Certifications: FR -Italy Class 11M, FR -Europe EN 1021 1&2, FR -USA CALIFORNIA TB117, FR - UK BS5852 CIGAR. TEST, FR - UK BS5852 CIG/MATCH, FR -UK GB 5852 CRIB 5  
Please note that colours displayed may vary slightly from the actual product. Therefore, we recommend requesting samples before ordering.

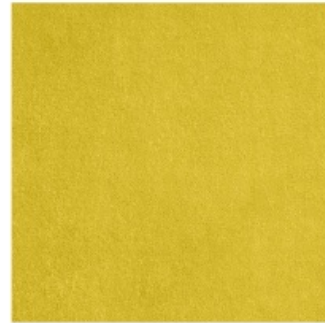
# VELVET IVANO



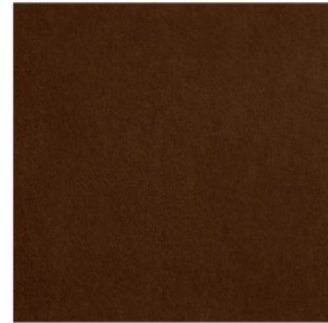
025 VERDE BOTTIGLIA



026 GRIS CENDRE



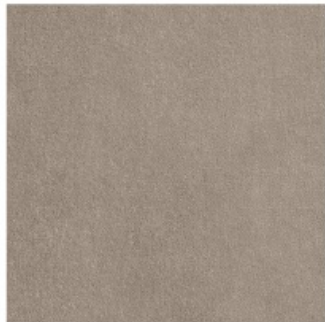
027 SOUFRE



028 TABACCO



030 BLEU JEANS



031 LINO

## TECHNICAL INFORMATION

Type - Mohair Velvet, Utilisation - Normal use, Martindale 80000 T, Composition - 62% Mohair 38% Cotton, Width 135 cm, Weight 923 gr / ml  
Certifications: FR -Italy Class 11M, FR -Europe EN 1021 1&2, FR -USA CALIFORNIA TB117, FR - UK BS5852 CIGAR. TEST, FR - UK BS5852 CIG/MATCH, FR -UK GB 5852 CRIB 5  
Please note that colours displayed may vary slightly from the actual product. Therefore, we recommend requesting samples before ordering.