

Soffio Wall Vertical 18

STWAVR18

IP20

MATERIALS

Hand-blown transparent borosilicate glass, hand-finished or electroplated brass

WEIGHT INCL. CANOPY

Max 4.5 lbs

POWER INPUT

110-120V 50-60Hz

LIGHT SOURCE (INCLUDED)

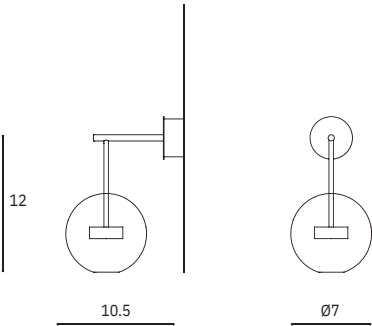
Proprietary Softspot75 LED, 9W, 380 Lumens, 2700K warm white. CRI>95. 75% downwards and 25% upwards







SOFFIO WALL VERTICAL 18

CONFIGURATION

VERSION	SIZE (UNIT: IN)
Soffio Wall Vertical 18 STWAVR18	



STEP 1: METAL FINISHES (INCLUDED IN STARTING PRICE)

			
Brushed Brass BR	Brushed Bronze BZ	Blackened Brass BK	Brushed Nickel NK

STEP 2: GLASS COLOUR



Transparent
TR



Iridescent
IR



Blushed Gold
BO



Blushed Sand
SD



Blushed Peach
PC



Blushed Light Green
LG



Blushed Light Blue
LB



Blushed Smokey Grey
BG

STEP 3: CANOPY

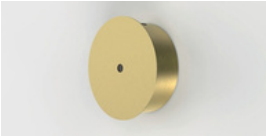
Type of Canopy

FINISH

CODE WITH DIMMABLE STANDARD

Phasecut

0-10Volt
Alternative dimming standard, if
required by electrician



1 Canopy: Ø5.5×H2 in
Driver position: Built-in

Brushed Brass
Brushed Bronze
Blackened Brass
Brushed Nickel

BR135BP
BZ135BP
BK135BP
NK135BP

BR135BV
BZ135BV
BK135BV
NK135BV

Custom colours (RAL Classic): availability and price upon request

Brass Finish

BRUSHED BRASS

Brass hand-finished with horizontal brushing. Protected with a semi-gloss transparent coating.



BRUSHED BRONZE

Brass with accelerated aging to become a bronze finish. Hand-finished with horizontal brushing. Protected with a semi-matt transparent coating.



BLACKENED BRASS

Brass with accelerated aging to become an extra dark chocolate finish. Hand-finished with horizontal brushing. Protected with a semi-matt transparent coating.



BRUSHED NICKEL

Electroplated nickel over Brass with horizontal brushing. Protected with a semi-gloss transparent coating.



POLISHED NICKEL

Electroplated Nickel over polished brass. Protected with a semi-gloss transparent coating.

