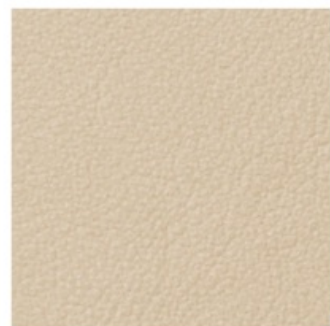


LEATHER IMAI

Imai is a chrome free, soft and pliable semi-aniline leather. Outstanding comfort combined with excellent durability and an extensive shade card, makes it very suitable for the public environment. Visible insect-bites and scars from healed wounds add to the elegant quality of the leather



02092



22034



03009



13075



16018



13070



11062



91118

TECHNICAL INFORMATION

Composition: 100% Leather, Lightfastness 6, Wet-rubbing 80/4, Dry-rubbing 2000/4, Sweat 50/4, Finish-adhesion 2 N/cm, Tear-strength 20 N/cm, Thickness 1.1 - 1.3 mm

Please note that colours displayed may vary slightly from the actual product. Therefore, we recommend requesting samples before ordering.

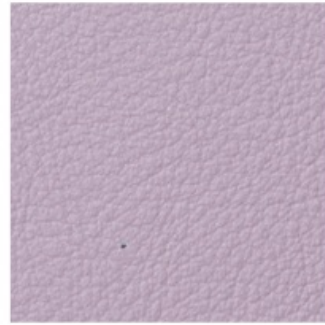
LEATHER IMAI



93121



75013



16007



44023



45043



18020



11060

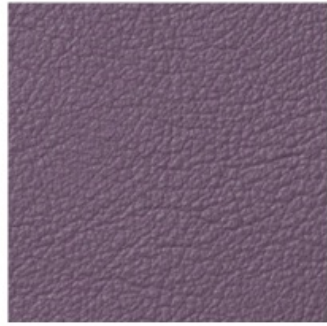


07071

TECHNICAL INFORMATION

Composition: 100% Leather, Lightfastness 6, Wet-rubbing 80/4, Dry-rubbing 2000/4, Sweat 50/4, Finish-adhesion 2 N/cm, Tear-strength 20 N/cm, Thickness 1.1 - 1.3 mm
Please note that colours displayed may vary slightly from the actual product. Therefore, we recommend requesting samples before ordering.

LEATHER IMAI



76003



77078



78038



88059



88058

TECHNICAL INFORMATION

Composition: 100% Leather, Lightfastness 6, Wet-rubbing 80/4, Dry-rubbing 2000/4, Sweat 50/4, Finish-adhesion 2 N/cm, Tear-strength 20 N/cm, Thickness 1.1 - 1.3 mm
Please note that colours displayed may vary slightly from the actual product. Therefore, we recommend requesting samples before ordering.

LEATHER IZAR

Bovine of European origin, with a distressed vintage effect. This high quality article is obtained starting with nubuck leather, which is slightly levelled with aniline and hand rubbed to give an aged effect. It has a very warm and silky feel.



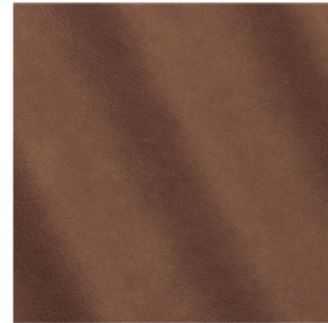
PAPYRUS



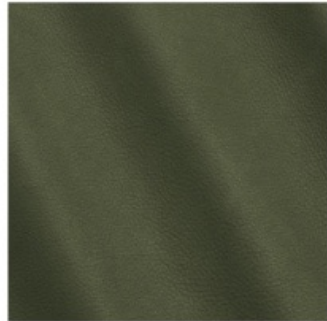
CAMEL



TERRA



ANTILOPE



BIRCH



CIMENT



PIETRA



CARBONE

TECHNICAL INFORMATION

Composition: 100% Leather, Tear strength - Single edge tear: UNI EN ISO 3377-1, Measurement Unit N, Guaranteed ≥ 20
Colour fastness to rubbing - Dry 50 Cycles: UNI EN ISO 11640:1998, Measurement Unit Grey Scale, Guaranteed $\geq 3/4$
Colour fastness to rubbing - Wet 20 Cycles: UNI EN ISO 11640:1998, Measurement Unit Grey Scale, Guaranteed ≥ 3
Colour fastness to rubbing - Sweat 20 Cycles: UNI EN ISO 11640:1998 ISO 11641 pH8, Measurement Unit Grey Scale, Guaranteed ≥ 3 ,
Flexing endurance - Dry 50.000 Cycles: UNI EN ISO 5402, Guaranteed No damage
Color fastness to artificial light - Exposition energy 16.000 kJ/sqm: UNI EN ISO 105 B02 (MET. 5), Measurement Unit Blue Scale,
Guaranteed ≥ 3 , Burning behaviour to cigarette and match flame: BS 5852:1979 BS EN 1021-1-2:2006, Guaranteed Pass
Please note that colours displayed may vary slightly from the actual product. Therefore, we recommend requesting samples before ordering.

LEATHER IZAR



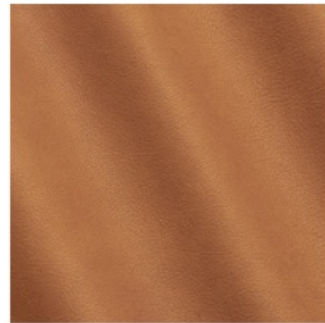
LIGHT



NUAGE



OLD COPPER



TAN



YAM

TECHNICAL INFORMATION

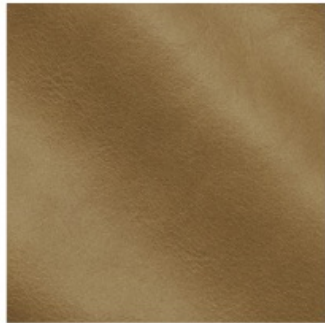
Composition: 100% Leather, Tear strength - Single edge tear: UNI EN ISO 3377-1, Measurement Unit N, Guaranteed ≥ 20
Colour fastness to rubbing - Dry 50 Cycles: UNI EN ISO 11640:1998, Measurement Unit Grey Scale, Guaranteed $\geq 3/4$
Colour fastness to rubbing - Wet 20 Cycles: UNI EN ISO 11640:1998, Measurement Unit Grey Scale, Guaranteed ≥ 3
Colour fastness to rubbing - Sweat 20 Cycles: UNI EN ISO 11640:1998 ISO 11641 pH8, Measurement Unit Grey Scale, Guaranteed ≥ 3 ,
Flexing endurance - Dry 50.000 Cycles: UNI EN ISO 5402, Guaranteed No damage
Color fastness to artificial light - Exposition energy 16.000 kj/sqm: UNI EN ISO 105 B02 (MET. 5), Measurement Unit Blue Scale,
Guaranteed ≥ 3 , Burning behaviour to cigarette and match flame: BS 5852:1979 BS EN 1021-1-2:2006, Guaranteed Pass
Please note that colours displayed may vary slightly from the actual product. Therefore, we recommend requesting samples before ordering.

LEATHER KALAUSI

Aniline cowhide 100% leather, produced by an accurate metal-free organic tanning process, made on bullskins of European origin. The retannage is done with tannins, the leather is vacuum dried and finished with waxes and anilines. The leather conveys uniqueness of character, the round and compact structure lends to highlighting the refinement of a silky hand, enhanced by a transparent look with soft pull-up effect.



TAUPE



TORTORA



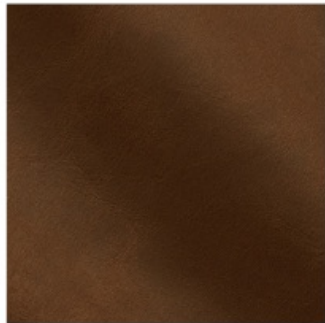
CARAMEL



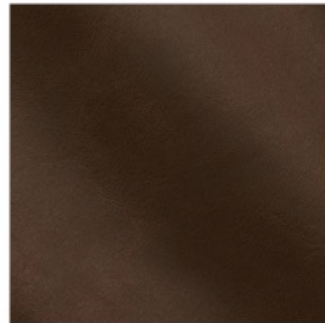
SADDLE



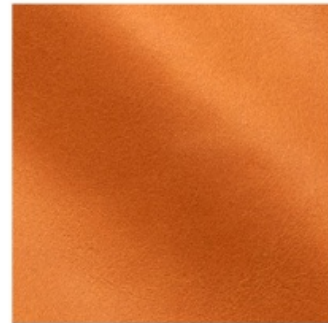
WENGE



EBANO



TOBAC



APRICOT

TECHNICAL INFORMATION

Composition: 100% Leather, Tear strenght - single edge tear: UNI EN ISO 3377-1, Measurement Unit N, Guaranteed ≥ 20 Colour fastness to rubbing - Dry 50 Cycles: UNI EN ISO 11640:1998, Measurement Unit - Grey Scale, Guaranteed ≥ 3 Colour fastness to rubbing - Wet 10 Cycles: UNI EN ISO 11640:1998, Measurement Unit - Grey Scale, Guaranteed ≥ 3 Color fastness to artificial light - Exposition energy 16.000 kj/sqm: UNI EN ISO 105 B02 (MET. 5), Measurement Unit - Grey Scale, Guaranteed ≥ 2 , Burning behaviour to cigarette and match flame: BS EN 1021-1-2 : 2006, BS 5852:1979, Guaranteed Pass Please note that colours displayed may vary slightly from the actual product. Therefore, we recommend requesting samples before ordering.

LEATHER KALAUSI



EMERALD



OXIDE



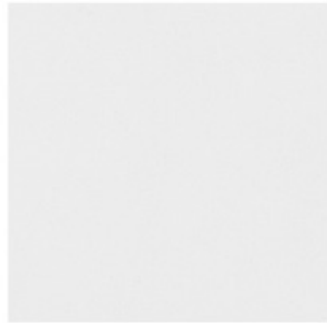
INK

TECHNICAL INFORMATION

Composition: 100% Leather, Tear strength - single edge tear: UNI EN ISO 3377-1, Measurement Unit N, Guaranteed ≥ 20 Colour fastness to rubbing - Dry 50 Cycles: UNI EN ISO 11640:1998, Measurement Unit - Grey Scale, Guaranteed ≥ 3 Colour fastness to rubbing - Wet 10 Cycles: UNI EN ISO 11640:1998, Measurement Unit - Grey Scale, Guaranteed ≥ 3 Color fastness to artificial light - Exposition energy 16.000 kJ/sqm: UNI EN ISO 105 B02 (MET. 5), Measurement Unit - Grey Scale, Guaranteed ≥ 2 , Burning behaviour to cigarette and match flame: BS EN 1021-1-2 : 2006, BS 5852:1979, Guaranteed Pass Please note that colours displayed may vary slightly from the actual product. Therefore, we recommend requesting samples before ordering.

LEATHER LEASATH

Leasath is a flat aniline with smooth and naked surface with no or little grain. The leather offers the highest comfort and the process allows all characteristics such as scars, insect bites and neck wrinkles to remain. When you think of the softest, smoothest, and most exclusive leather, that's aniline, our most natural product. It's only given a gentle surface treatment to withstand dirt. All in all, aniline is bare, with its natural beauty retained and exposed. Signs of life, such as creases, fat lines, grain differences, insect bites and small healed wounds, guarantee the finest quality and authenticity.



01022



33072



99092



91106



93104

TECHNICAL INFORMATION

Composition: 100% Leather, Lifgtfastness 3 (ISO 105-B02), Wet-rubbing 20/4 (ISO 11640), Dry-rubbing 50/4 (ISO 11640), Sweat 20/4 (ISO 11640), Tear-strength 20 N (DIN 53329-A, Thickness 1.0-1.3 mm).

Certificates: EN 1021 - 1,2

Please note that colours displayed may vary slightly from the actual product. Therefore, we recommend requesting samples before ordering.