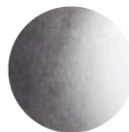

Struttura verniciata
Painted structure



T07
Nero
Black

Struttura cromata
Chromed structure



T23
Cromo Lucido
Polished Chrome



Composizione: 47% Pc, 22% Pl, 20% Co, 11% Vi

Test

- Solidità alla luce: 5, ISO 105-B02
- Resistenza alla fiamma: BS 5852:2006 source 0 (Cigarette test), CAL 117, NFPA 260/UFA
- Pilling: 4/5, UNI EN ISO 12945-2

Martindale: 40.000 cicli, EN ISO 12497-2

Lavaggio: lavaggio a secco

Applicazioni: rivestimento per imbottito contract

Colore: possono riscontrarsi lievi differenze

Composition: 47% Pc, 22% Pl, 20% Co, 11% Vi

Test

- Lightfastness: 5, ISO 105-B02
- Flammability: BS 5852:2006 source 0 (Cigarette test), CAL 117, NFPA 260/UFA
- Pilling: 4/5, UNI EN ISO 12945-2

Martindale: 40.000 cycles, EN ISO 12497-2

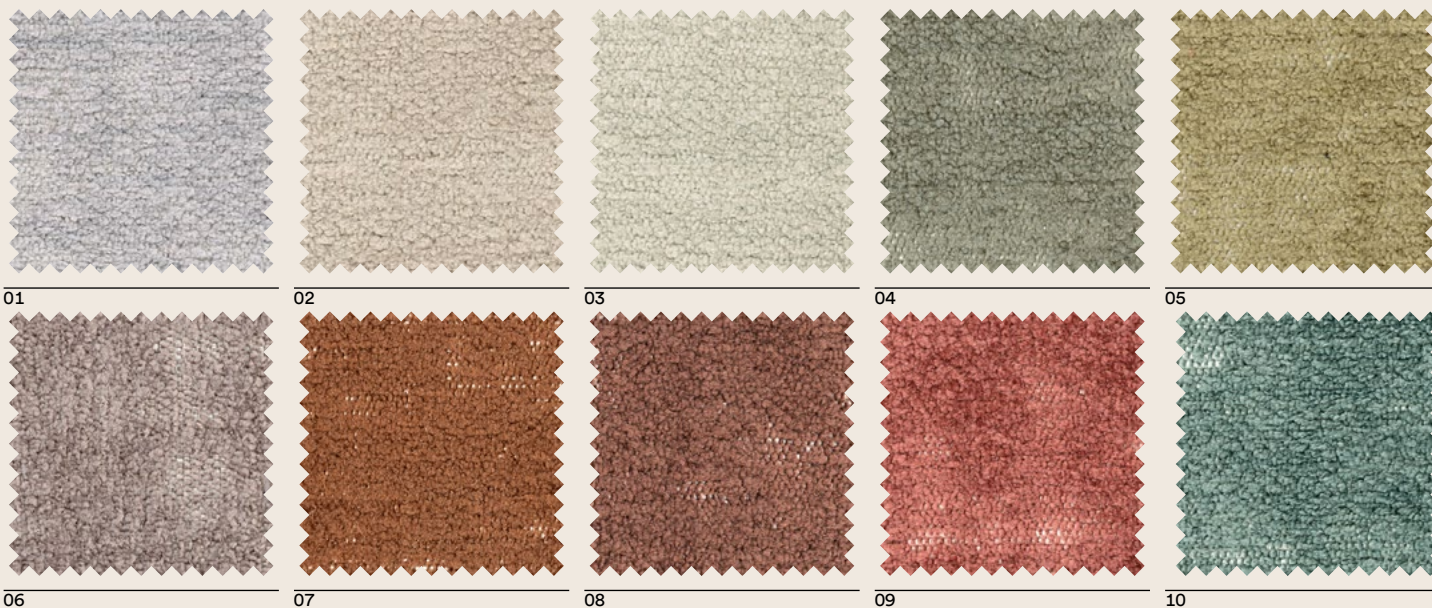
Washing: dry cleaning

Application: contract upholstered furniture

Colour: little difference may occur

Category: L D





Composizione: 100% PI

Test

- Solidità alla luce: 5, ISO 105-B02
- Resistenza alla fiamma: 1IM – UNI9175, Classe 1 – UNI 9177, EN 1021:14 part 1/2, BS 5852:79 part 1 is 0, NF-P 92 503, M1, DIN 4102, B1, California TB117:2013
- Navale: IMO MED – FTP 307 PART 8
- Fonoassorbente
- Pilling: 5, ISO 12945-2

Martindale: 50.000 cicli, ISO 12497-2

Lavaggio: lavaggio a secco

Applicazioni: rivestimento per imbottito contract

Colore: possono riscontrarsi lievi differenze

Composition: 100% PI

Test

- Lightfastness: 5, ISO 105-B02
- Flammability: 1IM – UNI9175, Classe 1 – UNI 9177, EN 1021:14 part 1/2, BS 5852:79 part 1 is 0, NF-P 92 503, M1, DIN 4102, B1, California TB117:2013
- Nautical: IMO MED – FTP 307 PART 8
- Sound absorbent
- Pilling: 5, ISO 12945-2

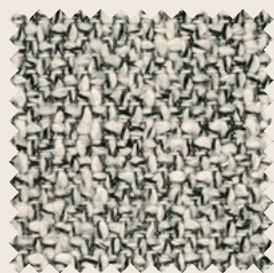
Martindale: 50.000 cycles, ISO 12497-2

Washing: dry cleaning

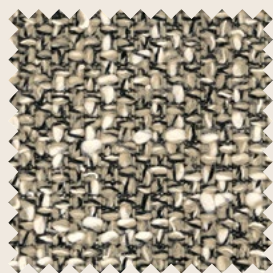
Application: contract upholstered furniture

Colour: little difference may occur

Category: L D



01



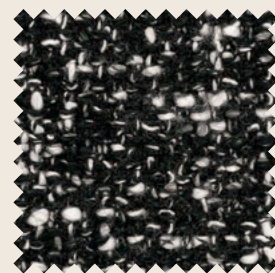
02



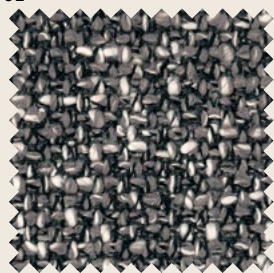
03



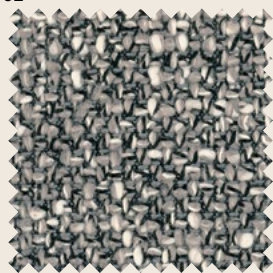
04



05



06



07

Composizione: 56% CO, 22% PL, 18% PC, 4% PA

Test

- Solidità alla luce: 4/5, UNI EN ISO 105-B02
- Resistenza alla fiamma: California TB117:2013 This fabric satisfy the CAL 117 standards with no additional flame retardant finish. NFPA 260:2013
- Pilling: 3/4, 5.000 cicli, UNI EN ISO 12945-2

Martindale: 30.000 cicli, UNI EN ISO 12947-2

Lavaggio: lavaggio a secco

Applicazioni: rivestimento per imbottito contract

Colore: possono riscontrarsi lievi differenze

Composition: 56% CO, 22% PL, 18% PC, 4% PA

Test

- Lightfastness: 4/5, UNI EN ISO 105-B02
- Flammability: California TB117:2013 This fabric satisfy the CAL 117 standards with no additional flame retardant finish. NFPA 260:2013
- Pilling: 3/4, 5.000 cycles, UNI EN ISO 12945-2

Martindale: 30.000 cycles, UNI EN ISO 12947-2

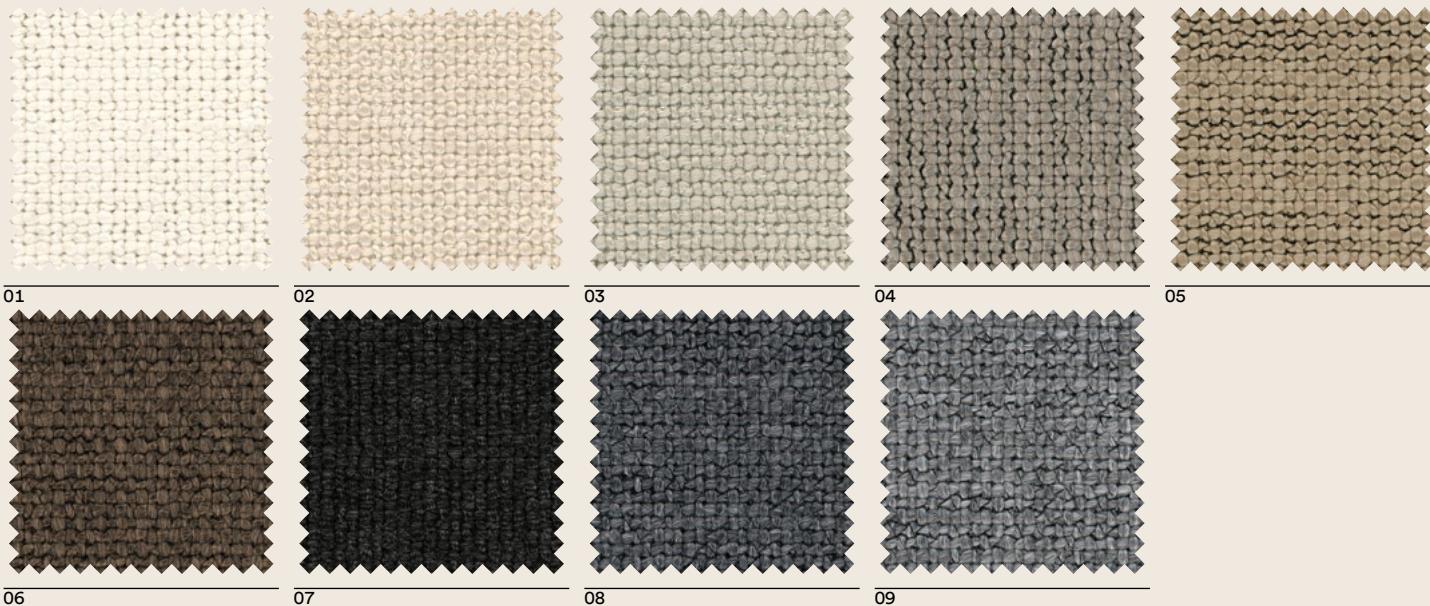
Washing: dry cleaning

Application: contract upholstered furniture

Colour: little difference may occur

Category: L E





Composizione: 42% VI, 36% CO, 16% AC, 6% PL

Test

- Solidità alla luce: 5, UNI EN ISO 105-B02
- Resistenza alla fiamma: California TB117:2013 This fabric satisfy the CAL 117 standards with no additional flame retardant finish. NFPA 260:2013
- Pilling: 3/4, UNI EN ISO 12945-2

Martindale: 30.000 cicli, UNI EN ISO 12947-2

Lavaggio: lavaggio a secco

Applicazioni: rivestimento per imbottito contract

Colore: possono riscontrarsi lievi differenze

Composition: 42% VI, 36% CO, 16% AC, 6% PL

Test

- Lightfastness: 5, UNI EN ISO 105-B02
- Flammability: California TB117:2013 This fabric satisfy the CAL 117 standards with no additional flame retardant finish. NFPA 260:2013
- Pilling: 3/4, UNI EN ISO 12945-2

Martindale: 30.000 cycles, UNI EN ISO 12947-2

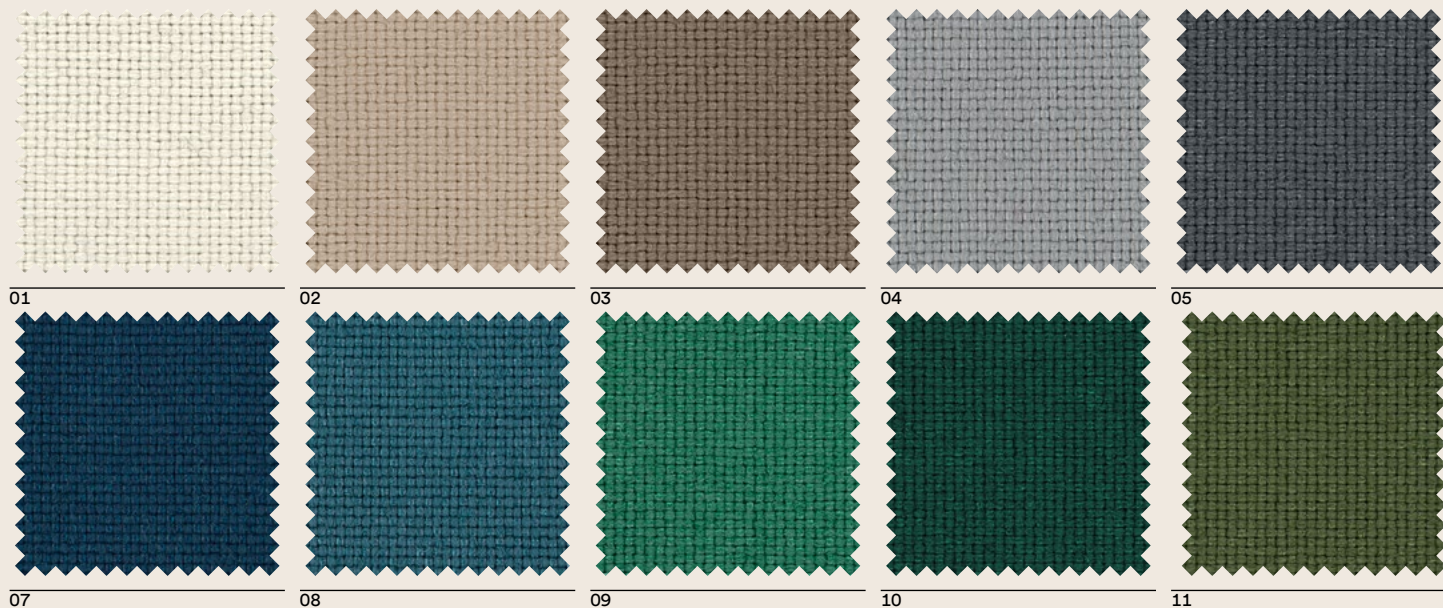
Washing: dry cleaning

Application: contract upholstered furniture

Colour: little difference may occur

Category: L E





Composizione: 100% TREVIRA CS

Test

- Solidità alla luce: 5, UNI EN ISO 105-B02
- Resistenza alla fiamma: California TB117:2013 This fabric satisfy the CAL 117 standards with no additional flame retardant finish. NFPA 260:2013
- Fonoassorbente: UNI EN ISO 354:2003 aw : 0,60
- Pilling: 4/5, UNI EN ISO 12945-2

Martindale: 50.000 cicli, UNI EN ISO 12947-2

Lavaggio: lavaggio a secco

Applicazioni: rivestimento per imbottito contract

Colore: possono riscontrarsi lievi differenze

Composition: 100% TREVIRA CS

Test

- Lightfastness: 5, UNI EN ISO 105-B02
- Flammability: California TB117:2013 This fabric satisfy the CAL 117 standards with no additional flame retardant finish. NFPA 260:2013
- Sound absorbent: UNI EN ISO 354:2003 aw : 0,60
- Pilling: 4/5, UNI EN ISO 12945-2

Martindale: 50.000 cycles, UNI EN ISO 12947-2

Washing: dry cleaning

Application: contract upholstered furniture

Colour: little difference may occur

Category: L E

Article: Lamium



Composizione: 100% CO

Test

- Solidità alla luce: 4/5, UNI EN ISO 105-B02
- Resistenza alla fiamma: California TB117:2013 This fabric satisfy the CAL 117 standards with no additional flame retardant finish.
- Fonoassorbente: UNI EN ISO 354:2003 aw : 0,60
- Pilling: 5, UNI EN ISO 12945-2

Martindale: 70.000 cicli, UNI EN ISO 12947-2

Lavaggio: lavaggio a secco

Applicazioni: rivestimento per imbottito contract

Colore: possono riscontrarsi lievi differenze

Composition: 100% CO

Test

- Lightfastness: 4/5, UNI EN ISO 105-B02
- Flammability: California TB117:2013 This fabric satisfy the CAL 117 standards with no additional flame retardant finish.
- Sound absorbent: UNI EN ISO 354:2003 aw : 0,60
- Pilling: 5, UNI EN ISO 12945-2

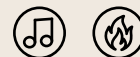
Martindale: 70.000 cycles, UNI EN ISO 12947-2

Washing: dry cleaning

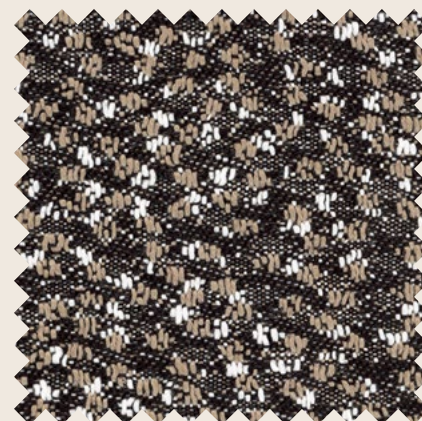
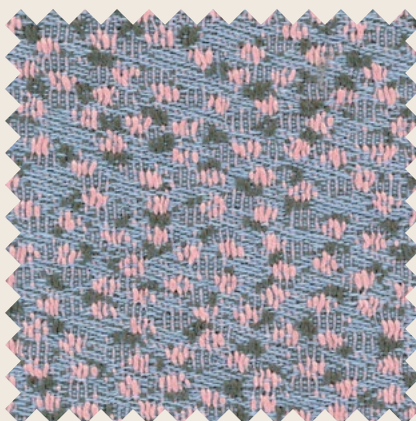
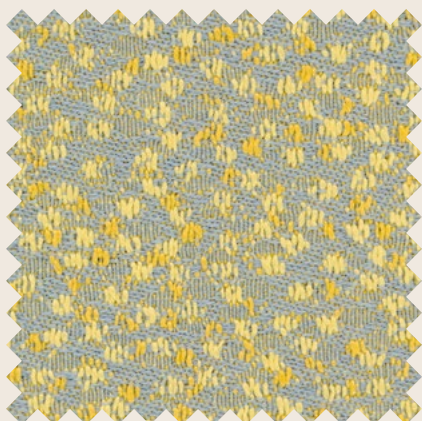
Application: contract upholstered furniture

Colour: little difference may occur

Category: L L



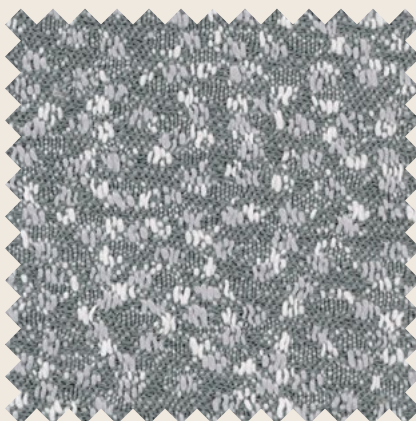
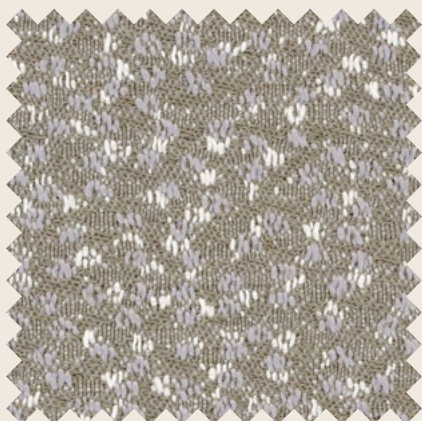
Article: Morus



01

02

03



04

05

Composizione: 47%WV, 32%AC,1 5%VI, 4%NY, 2%PL

Test

- Solidità alla luce: 7, ISO 105-B02
- Resistenza alla fiamma: BS 5852 Part 1 + crib 5, EN 1021-1/2, IMO FTP code 2010 Part 8, NF D 60 013, SN 198 898 5.3, UNI 9175 1IM, US Cal Bull 117-2013
- Certificazioni: Green building - Low chemical emission, EPD + HPD, EN 15804 - ISO 14040
- Pilling 4: EN ISO 12945

Martindale: 50.000 cicli

Lavaggio: lavaggio a secco

Applicazioni: rivestimento per imbottito home/contract

Colore: possono riscontrarsi lievi differenze

Composition: 47%WV, 32%AC,1 5%VI, 4%NY, 2%PL

Test

- Lightfastness: 7, ISO 105-B02
- Flammability: BS 5852 Part 1 + crib 5, EN 1021-1/2, IMO FTP code 2010 Part 8, NF D 60 013, SN 198 898 5.3, UNI 9175 1IM, US Cal Bull 117-2013
- Certifications: Green building - Low chemical emission, EPD + HPD, EN 15804 - ISO 14040
- Pilling: EN ISO 12945

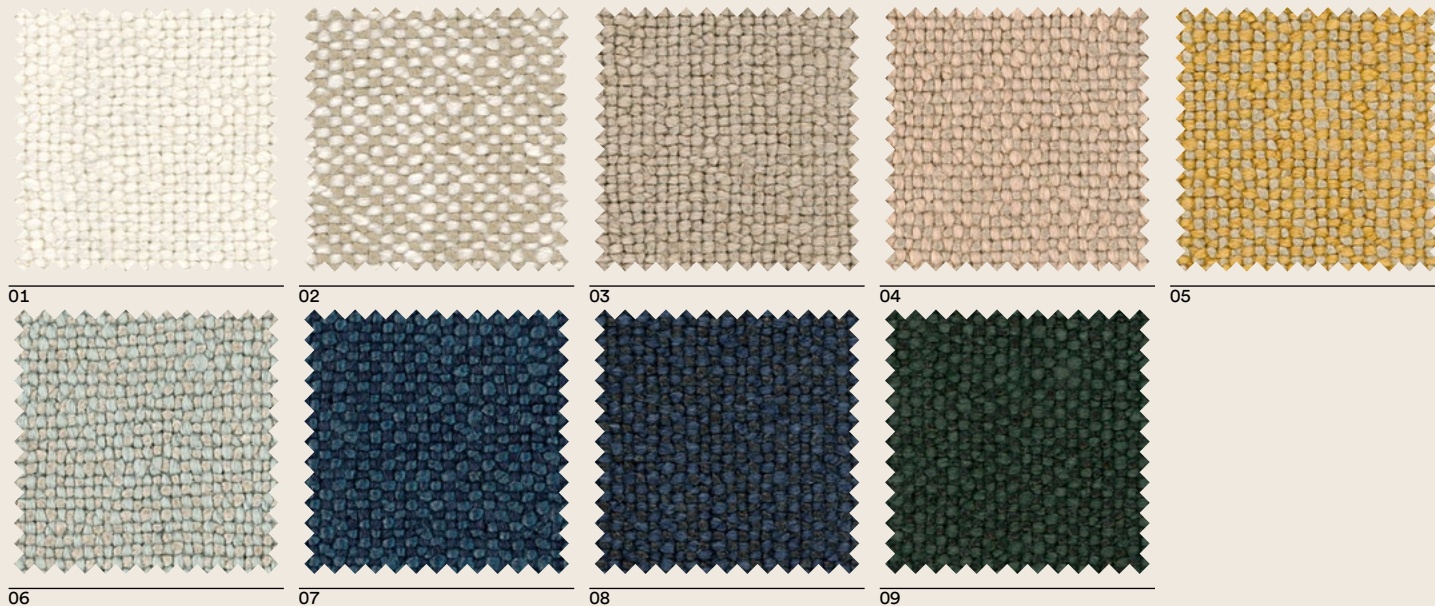
Martindale: 50.000 cycles

Washing: dry cleaning

Application: home/contract upholstered furniture

Colour: little difference may occur

Category: L M



Composizione: 95% LI, 5% PA

Test

- Solidità alla luce: 5, ISO 105-B02
- Resistenza alla fiamma: California TB117:2013
This fabric satisfythe CAL 117 standards with no additional flame retardant finish.
- Pilling: 3, UNI EN ISO 12945-2

Martindale: 60.000 cicli, UNI EN ISO 12947-2

Lavaggio: lavaggio a secco

Applicazioni: rivestimento per imbottito contract

Colore: possono riscontrarsi lievi differenze

Composition: 95% LI, 5% PA

Test

- Lightfastness: 5, ISO 105-B02
- Flammability: California TB117:2013
This fabric satisfythe CAL 117 standards with no additional flame retardant finish.
- Pilling: 3, UNI EN ISO 12945-2

Martindale: 60.000 cycles, UNI EN ISO 12947-2

Washing: dry cleaning

Application: contract upholstered furniture

Colour: little difference may occur

Category: L S





Composizione: 100% Lana vergine

Test

- Solidità alla luce: 4/5, ISO 105-B02
- Pilling: 3/4, ISO 12945-2
- Resistenza alla fiamma: UNI 9175 class 1 IM, EN 1021-1:2006, EN 1021-2:2006, BS 5852 IS 0 (cigarette), BS 5852 IS 1 (match), California TB 117:2013
- Navale: FTP code 307(88) Annex 1 part 8, ex IMO res A.652 (16)

Trattamento speciale anti-Pilling: tessuto trattato in finissaggio con il Sistema Termofisico "KD" ed è inalterabile. Né la bagnatura né il ferro da stiro potranno modificare le caratteristiche della stoffa.

Acustico: assorbimento acustico, UNI EN ISO 10534-2:2001

Martindale: 65.000 cicli, ISO 12947-2

Lavaggio: lavaggio a secco

Applicazioni: rivestimento per imbottito contract

Colore: possono riscontrarsi lievi differenze

Composition: 100% Virgin wool

Test

- Lightfastness: 4/5, ISO 105-B02
- Pilling: 3/4, ISO 12945-2
- Flammability: UNI 9175 classe 1 IM, EN 1021-1:2006, EN 1021-2:2006, BS 5852 IS 0 (cigarette), BS 5852 IS 1 (match), California TB 117:2013
- Nautical: FTP code 307(88) Annex 1 part 8, ex IMO res A.652 (16)

Special anti-Pilling treatment: fabric treated in finishing with the Termophysical System "KD" and it is inalterable. Neither wetting nor ironing modify the characteristic of the cloth.

Acoustic: acoustic absorption, UNI EN ISO 10534-2:2001

Martindale: 65.000 cycles, ISO 12947-2

Washing: dry cleaning

Application: contract upholstered furniture

Colour: little difference may occur

Category: L S





Composizione: 100% Lane della Nuova Zelanda

Test

- Resistenza alla luce: 5/7, EN ISO 105-B02
- Pilling: 4, EN ISO 12945-2
- Resistenza alla fiamma: California Bulletin CAL 117 E-Class 1, BS 5852 part 1 0,1 Cigarette & Match, Onorm b 3825-b2-3800-q1, Class Uno UNI 9175 Class 1 EMME, BS EN 1021 1&2, ASTM E 84, CA TB 117-2013, DIN 4102 BS, BS 476 part 7, class 1
- Navale: Imo msc 307(88) annex 1 part 8, MED certificate IMO
- Acustico: test acustico flusso d'aria, EN 29053
test assorbimento acustico, ISO 354
- Amico dell'ambiente: Oeko-Tex, EU Ecolabel

Martindale: 50.000 cicli, EN ISO 12947-2

Lavaggio: lavaggio a secco

Applicazioni: rivestimento per imbottito contract

Colore: possono riscontrarsi lievi differenze

Composition: 100% Wools of New Zealand

Test

- Lightfastness: 5/7, EN ISO 105-B02
- Pilling: 4, EN ISO 12945-2
- Flammability: California Bulletin CAL 117 E-Class 1, BS 5852 part 1 0, 1 Cigarette & Match, Onorm b 3825-b2-3800-q1, Class Uno UNI 9175 Class 1 EMME, BS EN 1021 1&2, ASTM E 84, CA TB 117-2013, DIN 4102 BS, BS 476 part 7, class 1
- Nautical: Imo msc 307(88) annex 1 part 8, MED certificate IMO
- Acoustic: acoustic test air flow resistance, EN 29053
acoustic test sound absorption, ISO 354
- Environmentally friendly: Oeko-Tex certified, Labelled with EU Ecolabel

Martindale: 50.000 cycles, EN ISO 12947-2

Washing: dry cleaning

Application: contract upholstered furniture

Colour: little difference may occur

Category: L T



Article: Thesium



Composizione: 80% Lana, 20% Rami

Test

- Solidità alla luce: 5/7, EN ISO 105-B02
- Resistenza alla fiamma: BS5852 Crib 5, UNI 9175 1IM, TB 117
- Navale: IMO FTP Code PART 8 (IMO Res.A.652 (16))
- Oeko Tex

Martindale: 70.000 cicli, EN ISO 12947-2

Lavaggio: lavaggio a secco

Applicazioni: rivestimento per imbottito contract

Colore: possono riscontrarsi lievi differenze

Composition: 80% Wool, 20% Rami

Test

- Lightfastness: 5/7, EN ISO 105-B02
- Flammability: BS5852 Crib 5, UNI 9175 1IM, TB 117
- Nautical: IMO FTP Code Part 8, (IMO Res.A.652 (16))
- Oeko Tex

Martindale: 70.000 cycles, EN ISO 12947-2

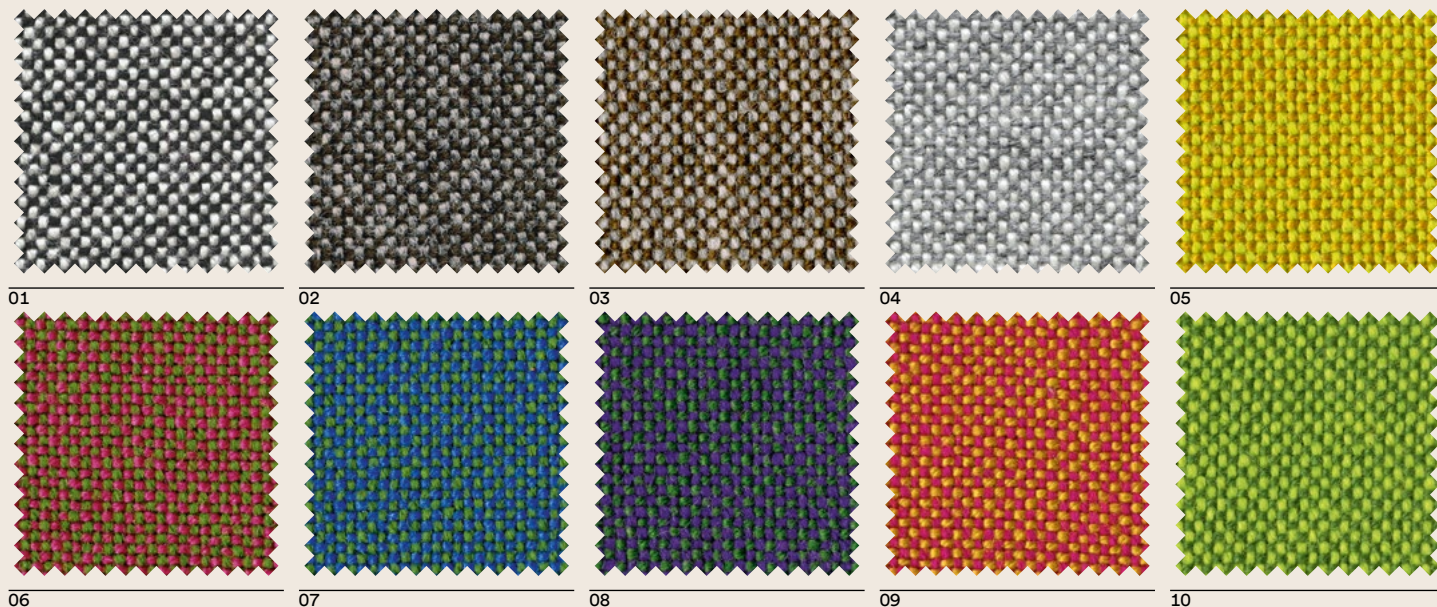
Washing: dry cleaning

Application: contract upholstered furniture

Colour: little difference may occur

Category: L T





Composizione: 70% Lana vergine, 30% Viscosa

Test

- Solidità alla luce: 7, ISO 105 B02
- Pilling: 3, EN ISO 12945-2:2000
- Resistenza alla fiamma: AS/NZS 1530.3, AS/NZ NZS 3837, BS 5852 Crib 5, BS 5852 part 1, DIN 4102 B2, EN 1021-1/2, NF D 60 013, NFPA 260, ONORM B1/Q1, UNI 9175 1IM, US Cal. Bull 117-2013
- Navale: IMO FTP Code 2010 Part 8
- Acustico: test acustico flusso d'aria, EN 11654
- Etichetta "the Flower"

Martindale: 100.000 cicli, EN ISO 12947-2:1998

Lavaggio: lavaggio a secco

Applicazioni: rivestimento per imbottito contract

Colore: possono riscontrarsi lievi differenze

Composition: 70% Virgin wool, 30% Viscose

Test

- Lightfastness: 7, ISO 105 B02
- Pilling: 3, EN ISO 12945-2:2000
- Flammability: AS/NZS 1530.3, AS/NZ NZS 3837, BS 5852 Crib 5, BS 5852 part 1, DIN 4102 B2, EN 1021-1/2, NFD60013, NFPA 260, ONORM B1/Q1, UNI 9175 1IM, US Cal. Bull 117-2013
- Nautical: IMO FTP Code 2010 Part 8
- Acoustic: acoustic test air flow resistance, EN 11654
- EU Ecolabel "the flower"

Martindale: 100.000 cycles, EN ISO 12947-2:1998

Washing: dry cleaning

Application: contract upholstered furniture

Colour: little difference may occur

Category: L T



Article: Pushpa



01



02



03

Composizione: 25% PO, 75% Cotone riciclato

Test

- Solidità alla luce: 3-6, ISO 105-B02
- Resistenza alla fiamma: BS 5852 Crib 5 with treatment, BS 5852 part 1 ignition source 0, EN 1021-1/2, US CAL117/2013 compliant interliner
- Pilling: 3/4, EN ISO 12945

Martindale: 75.000 cicli, UNI EN ISO 12497

Lavaggio: lavaggio a secco

Applicazioni: rivestimento per imbottito home

Colore: possono riscontrarsi lievi differenze

Composition: 25% PO, 75% Cotone riciclato

Test

- Lightfastness: 3-6, ISO 105-B02
- Flammability: BS 5852 Crib 5 with treatment, BS 5852 part 1 ignition source 0, EN 1021-1/2, US CAL117/2013 compliant interliner
- Pilling: 3/4, EN ISO 12945

Martindale: 75.000 cycles, UNI EN ISO 12497

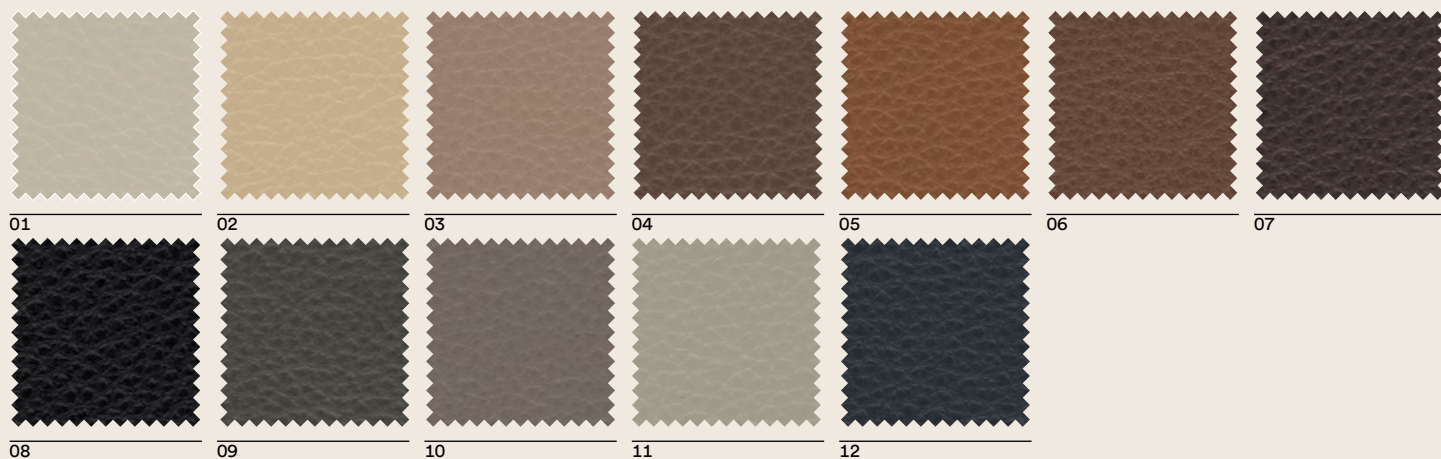
Washing: dry cleaning

Application: Home upholstered furniture

Colour: little difference may occur

Category: L U

Article: Ulex



Origine animale: pelle bovina
 Provenienza: Europa
 Tipo di concia: ai sali di cromo

Tipo di tintura: all'anilina
 passante in botte
 Tipo di finizione: pigmentata
 Tipologia: fiore corretto

Origin: bovine leather
 Place of origin: Europe
 Tannage: chromium salt

Dyeing: through dyeing aniline
 Finishing: pigmented
 Typology: corrected grain

Test

- Solidità alla luce: 6, UNI EN ISO 105-B02
- Resistenza alla fiamma: EN 1021-1/2, BS5852: Source 0, BS5852: Source 1, CALTB117

Manutenzione: spolverare con un panno morbido ed asciutto, evitare la luce diretta del sole, evitare l'esposizione a fonti di calore

Colore: possono riscontrarsi lievi differenze

Test

- Lightfastness: 5, UNI EN ISO 105-B02
- Flammability: EN 1021-1/2, BS5852: Source 0, BS5852: Source 1, CALTB117

Maintenance: dust with a soft and dry cloth, avoid placing leather near direct sun, keep the leather away from heat sources

Colour: little difference may occur

Category: L U





Composizione: 100% Wv

Test

- Solidità alla luce: 5/6, ISO 105-B02
- Resistenza alla fiamma: AS/NZS 1530.3, BS 5852 Crib 5, BS 5852 part 1, BS 5867 part 2 type B, DIN 4102 B2, EN 1021-1/2, EN 13501, C-s1 d0 glued, NF D 60 013, NFPA 260, ONORM b1/q1, UNI 9175 1IM, US Cal. Tech. Bull 117
- Navale: IMO FTP Code 2010 Part 8
- Acustico: test acustico flusso d'aria, EN 29053
- Test assorbimento acustico, ISO 354
- Pilling: 3, BS EN ISO 12945:2000

Martindale: 45.000 cicli, BS EN ISO 12947-1999

Lavaggio: lavaggio a secco

Applicazioni: rivestimento per imbottito contract

Colore: possono riscontrarsi lievi differenze

EU Ecolabel "The Flower"

Composition: 100% Wv

Test

- Lightfastness: 5/6, ISO 105-B02
- Flammability: AS/NZS 1530.3, BS 5852 Crib 5, BS 5852 part 1, BS 5867 part 2 type B, DIN 4102 B2, EN 1021-1/2, EN 13501, C-s1 d0 glued, NFD60013, NFPA 260, ONORM b1/q1, UNI 9175 1IM, US Cal. Tech. Bull 117
- Nautical: IMO FTP Code 2010 Part 8
- Acoustic: acoustic test air flow resistance, EN 29053
- Acoustic test sound absorption, ISO 354
- Pilling 3: BS EN ISO 12945:2000

Martindale: 45.000 cycles, BS EN ISO 12947-1999

Washing: dry cleaning

Application: contract upholstered furniture

Colour: little difference may occur

EU Ecolabel "The Flower"

Category: L V





Origine animale: pelle bovina
 Provenienza: Europa
 Tipo di concia: ai sali di cromo

Tipo di tintura: all'anilina
 passante in botte
 Tipo di finizione: leggermente
 pigmentata
 Tipologia: pieno fiore

Origin: bovine leather
 Place of origin: Europe
 Tannage: chromium salt

Dyeing: through dyeing aniline
 Finishing: lightly pigmented
 Typology: full grain

Test

- Solidità alla luce: 6, UNI EN ISO 105-B02
- Resistenza alla fiamma: UNI EN ISO 1021-1, UNI EN ISO 1021-2, BS 5852 PART 1 (Source 0 and Source 1), California TB 117:2013, FTP CODE 2010 PART 8 (ex IMO A652 (16))

Conforme alla normativa REACH

Blue Angel

Manutenzione: spolverare con un panno morbido ed asciutto. Evitare la luce diretta del sole. Evitare l'esposizione a fonti di calore.

Colore: possono riscontrarsi lievi differenze

Test

- Lightfastness: 6, UNI EN ISO 105-B02
- Flammability: UNI EN ISO 1021-1, UNI EN ISO 1021-2, BS 5852 PART 1 (Source 0 and Source 1), California TB 117:2013, FTP CODE 2010 PART 8 (ex IMO A652 (16))

Comply to REACH regulation

Blue Angel

Maintenance: dust with a soft and dry cloth. Avoid placing leather near direct sun. Keep the leather away from heat sources.

Colour: little difference may occur

Category: L V





Composizione: 100% Mohair

Test

- Solidità alla luce: 5, UNI EN ISO 105-B02
- Resistenza alla fiamma: EN 1021 1/2, BS5852 crib 5, DIN 4102, B2, UNI 9175, classe 1IM, Cal TB 117, NFPA 260, class 1
- Navale: IMO 2010 FTP part 8
- Pilling: 4/5, UNI EN ISO 12945-2

Cradle to Cradle bronze certified

Martindale: 90.000 cicli, UNI EN ISO 12497-2

Oerko test

Lavaggio: lavaggio a secco

Applicazioni: rivestimento per imbottito contract

Colore: possono riscontrarsi lievi differenze

Composition: 100% Mohair

Test

- Lightfastness: 5, UNI EN ISO 105-B02
- Flammability: EN 1021 1/2, BS5852 crib 5, DIN 4102, B2, UNI 9175, classe 1IM, Cal TB 117, NFPA 260, class 1
- Naval: IMO 2010 FTP part 8
- Pilling: 4/5, UNI EN ISO 12945-2

Cradle to Cradle bronze certified

Martindale: 90.000 cycles, UNI EN ISO 12497-2

Oerko test

Washing: dry cleaning

Application: contract upholstered furniture

Colour: little difference may occur

Category: L V

Article: Pelle Super, Super Leather



Origine animale: pelle bovina
Provenienza: Europa
Tipo di concia: ai sali di cromo

Tipo di tintura: all'anilina
passante in botte
Tipo di finizione: leggermente
pigmentata
Tipologia: pieno fiore

Origin: bovine leather
Place of origin: Europe
Tannage: chromium salt

Dyeing: through dyeing aniline
Finishing: lightly pigmented
Typology: full grain

Test

- Solidità alla luce: 6, UNI EN ISO 105-B02
- Resistenza alla fiamma: EN 1021-1 (cigarette test), EN 1021-2 (match test)
- Conforme alla normativa REACH
- Certificazione ISO 9001:2008
- Leather from Italy – Full Cycle UNI 11239
- Carbon Footprint of product
- ISO 14067/CD2
- Environmental product declaration
- ISO 14025
- Der Blaue Engel RAL – UZ 148
- Golden M RAL – GZ430

Manutenzione: spolverare con un panno morbido ed asciutto,
evitare la luce diretta del sole, evitare l'esposizione a fonti di calore

Colore: possono riscontrarsi lievi differenze

Test

- Lightfastness: 6, UNI EN ISO 105-B02
- Flammability: EN 1021-1 (cigarette test), EN 1021-2 (match test)
- Comply to REACH regulation
- Certification ISO 9001:2008
- Leather from Italy – Full Cycle UNI 11239
- Carbon Footprint of product
- ISO 14067/CD2
- Environmental product declaration
- ISO 14025
- Der Blaue Engel RAL – UZ 148
- Golden M RAL – GZ430

Maintenance: dust with a soft and dry cloth, avoid placing leather
near direct sun, keep the leather away from heat sources

Colour: little difference may occur



Category: L V



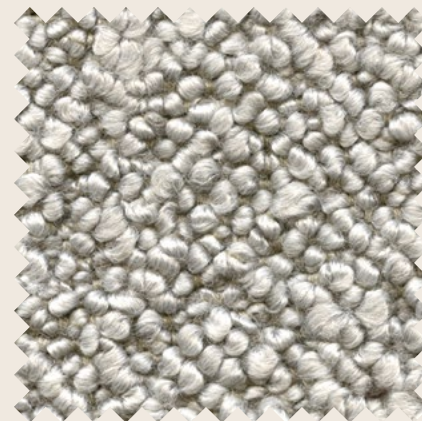
Article: Ricinus



05



06



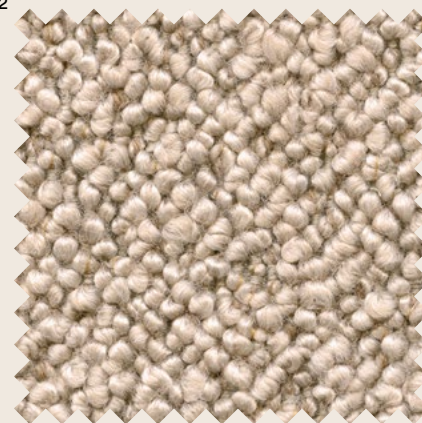
02



03



04



01

Composizione: 42% Wo, 33% Cv, 24% Co, 1% Pa

Test

- Solidità alla luce: 6/7, ISO 105-B02
- Resistenza alla fiamma: BS 5852 part 1:1979 source 0 cigarette, BS 5852 part 1:1979 source 1 match, BS 5852:2006 ignition source 5, BS 5867:part 2 type B, 2008, CAL TB117
- Pilling: 4/5 - 5000 giri, EN ISO 12947-2

Martindale: 40.000 cicli, UNI EN ISO 12497-2

Lavaggio: lavaggio a secco

Applicazioni: rivestimento per imbottito contract/home

Colore: possono riscontrarsi lievi differenze

Composition: 42% Wo, 33% Cv, 24% Co, 1% Pa

Test

- Lightfastness: 6/7, ISO 105-B02
- Flammability: BS 5852 part 1:1979 source 0 cigarette, BS 5852 part 1:1979 source 1 match, BS 5852:2006 ignition source 5, BS 5867:part 2 type B, 2008, CAL TB117
- Pilling: 4/5 - 5000 rubs, EN ISO 12947-2

Martindale: 40.000 cycles, UNI EN ISO 12497-2

Washing: dry cleaning

Application: contract and home upholstered furniture

Colour: little difference may occur

Category: L V





Composizione: 96% Nw, 4% Ny

Test

- Solidità alla luce: 6-7, ISO 105-B02
- Resistenza alla fiamma: BS 5852 part 1, DIN 4102 B2, EN 1021-1/2, NF D 60 013, UNI 9175 1IM, US Cal. Tech. Bull 117, AS/NZS 3837 class 2
- Navale: IMO FTP Code 2010 Part 8
- Acustico: test assorbimento acustico, ISO 354
- Pilling: 3/4, EN ISO 12945-2

Martindale: 45.000 cicli, UNI EN ISO 12497-2

Lavaggio: lavaggio a secco

Applicazioni: rivestimento per imbottito contract e home

Colore: possono riscontrarsi lievi differenze

EU Ecolabel "The Flower"

Composition: 96% Nw, 4% Ny

Test

- Lightfastness: 6-7, ISO 105-B02
- Flammability: BS 5852 part 1, DIN 4102 B2, EN 1021-1/2, NF D 60 013, UNI 9175 1IM, US Cal. Tech. Bull 117, AS/NZS 3837 class 2
- Nautical: IMO FTP Code 2010 Part 8
- Acoustic: acoustic test sound absorption, ISO 354
- Pilling: 3/4, EN ISO 12945-2

Martindale: 45.000 cycles, UNI EN ISO 12497-2

Washing: dry cleaning

Application: contract and home upholstered furniture

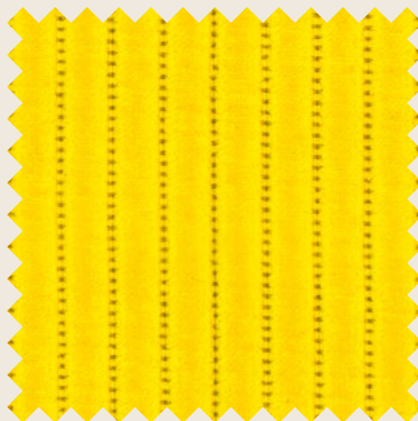
Colour: little difference may occur

EU Ecolabel "The Flower"

Category: L V



Article: Vinca



01

02

03



04

05

Composizione: 90% CO, 10% PL

Test

- Solidità alla luce: 5/7, ISO 105-B02
- Resistenza alla fiamma: AS/NZS 1530.3, BS 5852 crib 5 + part 1/0, EN 1021-1/2, US CAL. BULL. 117-2013
- Certificazioni: Green building - Low chemical emission, EPD + HPD, EN 15804 - ISO 14040
- Pilling: 4, EN ISO 12945

Martindale: 100.000 cicli, EN ISO 12947

Lavaggio: lavaggio a secco

Applicazioni: rivestimento per imbottito home/contract

Colore: possono riscontrarsi lievi differenze

Composition: 90% CO, 10% PL

Test

- Lightfastness:5/7, ISO 105-B02
- Flammability: AS/NZS 1530.3, BS 5852 crib 5 + part 1/0, EN 1021-1/2, US CAL. BULL. 117-2013
- Certifications: Green building - Low chemical emission, EPD + HPD, EN 15804 - ISO 14040
- Pilling: 4, EN ISO 12945

Martindale: 100.000 cycles, EN ISO 12947

Washing: dry cleaning

Application: home/contract upholstered furniture

Colour: little difference may occur

Category: L V

Article: Pelle Anilina, Aniline Leather



01



02



03



04

Origine animale: pelle bovina
Provenienza: Europa
Tipo di concia: ai sali di cromo

Tipo di tintura: all'anilina
passante in botte
Tipo di finizione: anilina
Tipologia: pieno fiore

Origin: bovine leather
Place of origin: Europe
Tannage: chromium salt

Dyeing: through dyeing aniline
Finishing: aniline
Typology: full grain

Test

- Solidità alla luce: 3, UNI EN ISO 105-B02
- Resistenza alla fiamma: EN 1021-1/2, BS5852:Source 0, BS5852:Source 1, CALTB117, NFPA 260/UFAC
- Conforme alla normativa REACH
- Leather from Italy – Full Cycle: UNI EN 16484:2015
- Carbon Footprint of product: ISO/TS 14067:2018
- Environmental product declaration: ISO 14025
- Blauer Engel: RAL – UZ 148

Test

- Lightfastness: 3, UNI EN ISO 105-B02
- Flammability: EN 1021-1/2, BS5852:Source 0, BS5852:Source 1, CALTB117, NFPA 260/UFAC
- Comply to REACH regulation
- Leather from Italy – Full Cycle: UNI EN 16484:2015
- Carbon Footprint of product: ISO/TS 14067:2018
- Environmental product declaration: ISO 14025
- Blauer Engel: RAL – UZ 148

Manutenzione: spolverare con un panno morbido ed asciutto,
evitare la luce diretta del sole, evitare l'esposizione a fonti di calore

Maintenance: dust with a soft and dry cloth, avoid placing leather
near direct sun, keep the leather away from heat sources

Pulizia: spolverare con un panno morbido e asciutto

Cleaning: dust with a soft and dry cloth

Colore: possono riscontrarsi lievi differenze

Colour: little difference may occur



Category: L Z





Origine animale: pelle bovina
 Provenienza: Europa
 Tipo di concia: al cromo

Tipo di tintura: all'anilina passante
 Tipo di finizione: Anilina, semi-anilina
 Tipologia: pieno fiore

Origin: bovine leather
 Place of origin: Europe
 Tannage: chromium

Dyeing: through dyeing aniline
 Finishing: aniline, semi-aniline
 Typology: full grain

Test

- Solidità alla luce: 3, UNI EN ISO 105-B02 (met. 3)
- Resistenza alla fiamma: EN 1021-1/2, BS5852:Source 0, BS5852:Source 1, CALTB117, NFPA 260/UFAC
- Conforme alla normativa REACH
- Leather from Italy – Full Cycle: UNI EN 16484:2015
- Carbon Footprint of product: ISO/TS 14067:2018
- Environmental product declaration: ISO 14001
- Blauer Engel: RAL – UZ 148

Test

- Lightfastness: 3, UNI EN ISO 105-B02 (met. 3)
- Flammability: EN 1021-1/2, BS5852:Source 0, BS5852:Source 1, CALTB117, NFPA 260/UFAC
- Comply to REACH regulation
- Leather from Italy – Full Cycle: UNI EN 16484:2015
- Carbon Footprint of product: ISO/TS 14067:2018
- Environmental product declaration: ISO 140001
- Blauer Engel: RAL – UZ 148

Manutenzione: spolverare con un panno morbido ed asciutto, evitare la luce diretta del sole, evitare l'esposizione a fonti di calore

Maintenance: dust with a soft and dry cloth, avoid placing leather near direct sun, keep the leather away from heat sources

Pulizia: spolverare con un panno morbido e asciutto

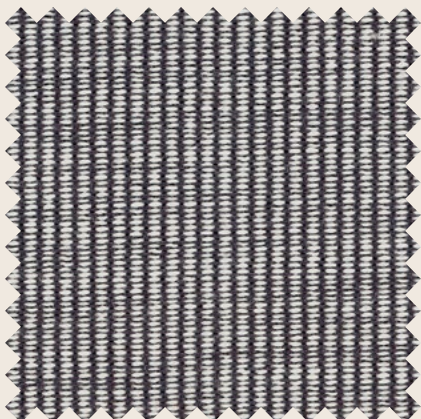
Cleaning: dust with a soft and dry cloth

Colore: possono riscontrarsi lievi differenze

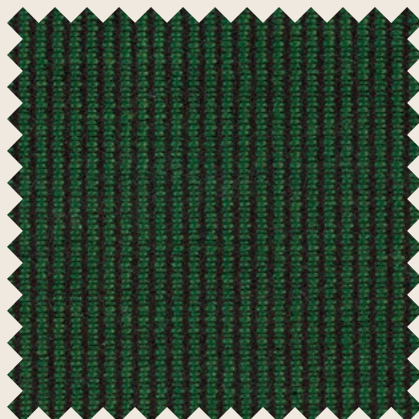
Colour: little difference may occur

Category: L Z

Article: Zoe



01



02



03



04

Composizione: 65%WV,23%CO,8%VI,4%NY

Test

- Solidità alla luce: 5/7, ISO 105-B02
- Resistenza alla fiamma: AS/NZA 1530.3, AS/NZS 3837 class 2, BS 5852 crib 5 + part 1, EN 1021-1/2, IMO FTP code 2010 Part 8 • NF D 60 013, NFPA 260, UNI 9175 1IM, US Cal. Bull. 117-2013
- Certificazioni: Green building - Low chemical emission, EPD + HPD, EN 15804 - ISO 14040
- Pilling: 3/4, EN ISO 12945

Martindale: 100.000 cicli, EN ISO 12947

Lavaggio: lavaggio a secco

Applicazioni: rivestimento per imbottito home/contract

Colore: possono riscontrarsi lievi differenze

Composition: 65%WV,23%CO,8%VI,4%NY

Test

- Lightfastness: 5/7, ISO 105-B02
- Flammability: AS/NZA 1530.3, AS/NZS 3837 class 2, BS 5852 crib 5 + part 1, EN 1021-1/2, IMO FTP code 2010 Part 8 • NF D 60 013, NFPA 260, UNI 9175 1IM, US Cal. Bull. 117-2013
- Certifications: Green building - Low chemical emission, EPD + HPD, EN 15804 - ISO 14040
- Pilling: 3/4, EN ISO 12945

Martindale: 100.000 cicli, EN ISO 12947

Washing: dry cleaning

Application: home/contract upholstered furniture

Colour: little difference may occur

Category: L Z