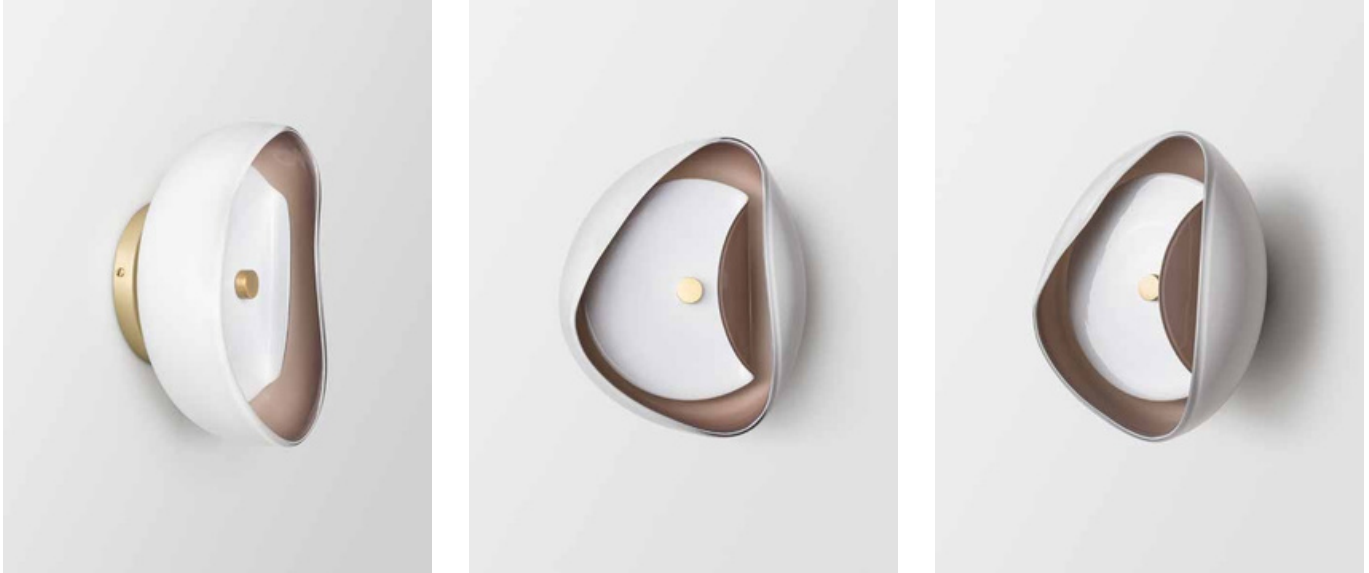


Aequorea Sconce



Materials

Glass: hand blown glass, one or two color layers. Taupe, charcoal, amber and white.

Metal finishes: satin brass, antique brass, satin nickel, oil-rubbed bronze.

Hardware: brass

Dimensions:

10" long x 10" wide x 5" deep

Custom colors and finishes available.

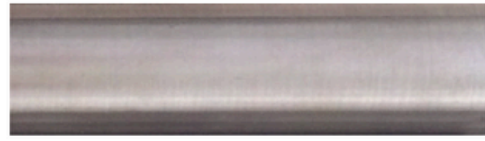
Lamping:

(2) 4W G9 2700K dimmable LED bulb per shade (40W incandescent equivalent) 120V or 240V.

METAL FINISHES



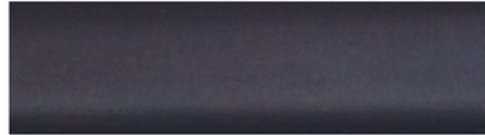
Satin Brass



Satin Nickel



Antique Brass



Oil-Rubbed Bronze

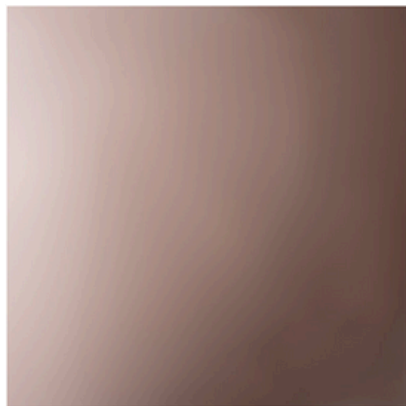
GLASS COLORS



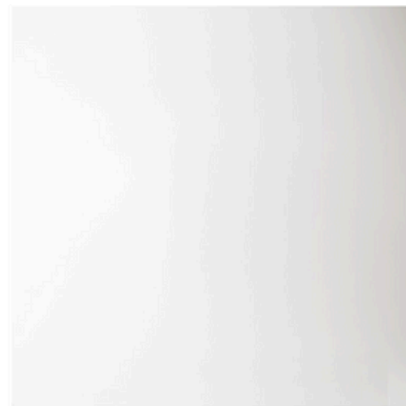
Amber



Charcoal



Taupe



White