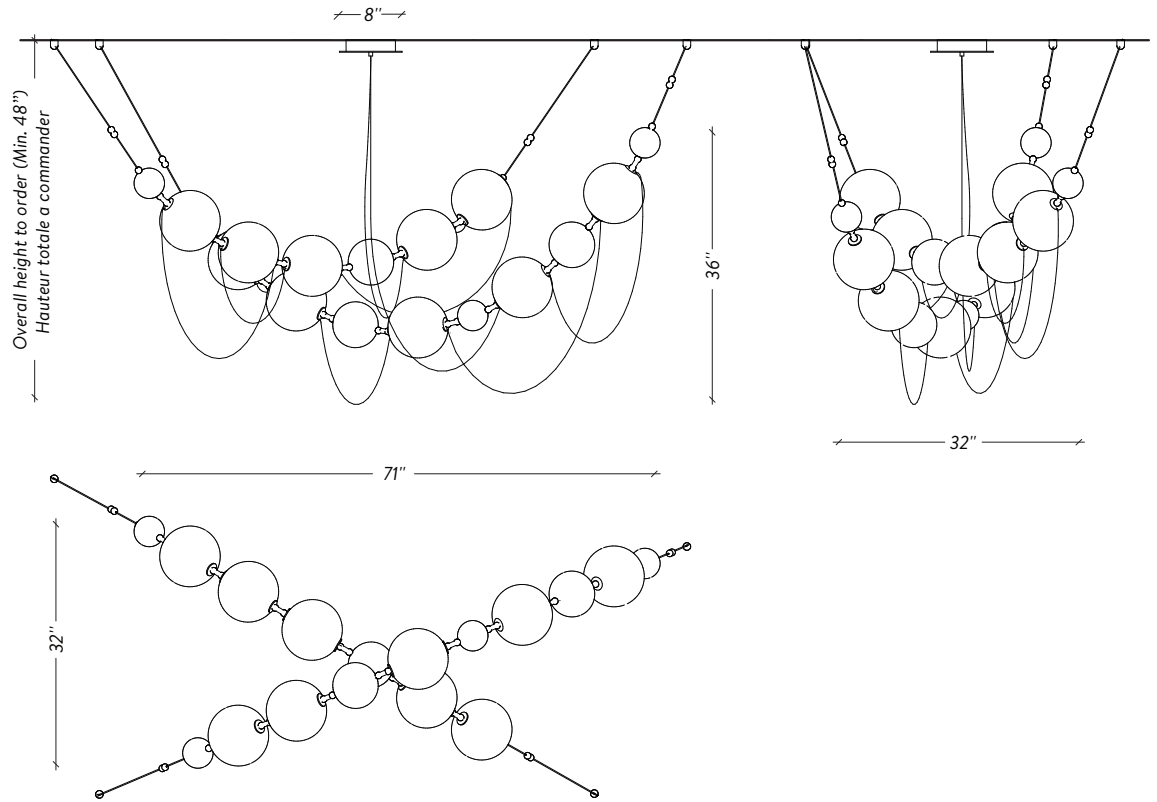


# COCO-DE-MER



# SPÉCIFICATIONS

## DIMENSIONS

*Configuration 01*

71" x 32" x 36" H - 48 lbs

Overall height minimum 48"

*Hauteur totale minimum 48"*

## CABLES

Not adjustable / Overall length to order

*Non ajustable / Longueur totale à la commande*

## SHADE / DIFFUSEUR

8" Hand blown glass ball

*Globe 8" de verre soufflé à la main*

## SOURCE

Dimmable LED / DEL dimmable

INPUT: 120V

Tri-Mode Dimming™ :

TRIAC, ELV & 0-10 V (Upon Request /

*Sur demande*)

2700K (Dim-to-Warm 2200K to 2700K)

Constant current driver / *Transformateur à*

*courant constant*

2 880 Lumens - 40 W - 50 000h

## CERTIFICATION

UL listed for Canada and USA

*Certifié UL pour le Canada et E-U*

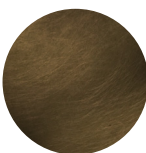


## COMPATIBLE DIMMER LIST/

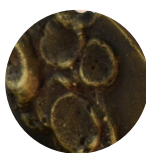
### LISTE DE GRADATEUR COMPATIBLE

<b>Lutron</b>	<b>DVCL-153P *Recommended</b>
Leviton	IPI06-1LZ
Leviton	6631-2
Lutron	S-603PG
Lutron	DV-600P
Lutron	TGCL-153P
Lutron	S-600P
Leviton	VPE06

## FINISHES / FINIS



Dark Aged Brass  
*Laiton Antique foncé*



Hand textured metal  
*Métal texturé à la main*



Textured clear glass  
*Verre texturé clair*



Textured white matte glass  
*Verre mat blanc texturé*