

LEATHER IZAR

Bovine of European origin, with a distressed vintage effect. This high quality article is obtained starting with nubuck leather, which is slightly levelled with aniline and hand rubbed to give an aged effect. It has a very warm and silky feel.



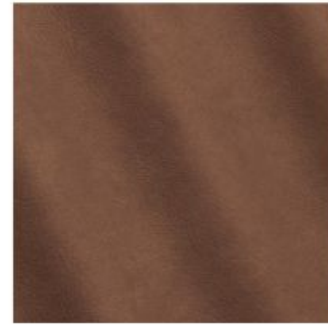
PAPYRUS



CAMEL



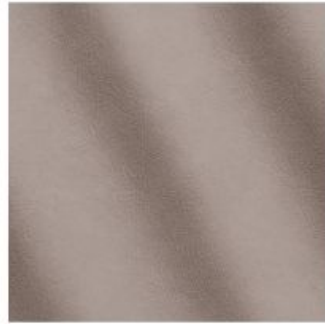
TERRA



ANTILOPE



BIRCH



CIMENT



PIETRA



CARBONE

TECHNICAL INFORMATION

Composition: 100% Leather, Tear strength - Single edge tear: UNI EN ISO 3377-1, Measurement Unit N, Guaranteed ≥ 20
Colour fastness to rubbing - Dry 50 Cycles: UNI EN ISO 11640:1998, Measurement Unit Grey Scale, Guaranteed $\geq 3/4$
Colour fastness to rubbing - Wet 20 Cycles: UNI EN ISO 11640:1998, Measurement Unit Grey Scale, Guaranteed ≥ 3
Colour fastness to rubbing - Sweat 20 Cycles: UNI EN ISO 11640:1998 ISO 11641 pH8, Measurement Unit Grey Scale, Guaranteed ≥ 3 ,
Flexing endurance - Dry 50.000 Cycles: UNI EN ISO 5402, Guaranteed No damage
Color fastness to artificial light - Exposition energy 16.000 kj/sqm: UNI EN ISO 105 B02 (MET. 5), Measurement Unit Blue Scale,
Guaranteed ≥ 3 , Burning behaviour to cigarette and match flame: BS 5852:1979 BS EN 1021-1-2:2006, Guaranteed Pass
Please note that colours displayed may vary slightly from the actual product. Therefore, we recommend requesting samples before ordering.

LEATHER IZAR



LIGHT



NUAGE



OLD COPPER



TAN



YAM

TECHNICAL INFORMATION

Composition: 100% Leather, Tear strength - Single edge tear: UNI EN ISO 3377-1, Measurement Unit N, Guaranteed ≥ 20
Colour fastness to rubbing - Dry 50 Cycles: UNI EN ISO 11640:1998, Measurement Unit Grey Scale, Guaranteed $\geq 3/4$
Colour fastness to rubbing - Wet 20 Cycles: UNI EN ISO 11640:1998, Measurement Unit Grey Scale, Guaranteed ≥ 3
Colour fastness to rubbing - Sweat 20 Cycles: UNI EN ISO 11640:1998 ISO 11641 pH8, Measurement Unit Grey Scale, Guaranteed ≥ 3 ,
Flexing endurance - Dry 50.000 Cycles: UNI EN ISO 5402, Guaranteed No damage
Color fastness to artificial light - Exposition energy 16.000 kj/sqm: UNI EN ISO 105 B02 (MET. 5), Measurement Unit Blue Scale,
Guaranteed ≥ 3 , Burning behaviour to cigarette and match flame: BS 5852:1979 BS EN 1021-1-2:2006, Guaranteed Pass
Please note that colours displayed may vary slightly from the actual product. Therefore, we recommend requesting samples before ordering.

LEATHER KALAUSI

Aniline cowhide 100% leather, produced by an accurate metal-free organic tanning process, made on bullskins of European origin. The retannage is done with tannins, the leather is vacuum dried and finished with waxes and anilines. The leather conveys uniqueness of character, the round and compact structure lends to highlighting the refinement of a silky hand, enhanced by a transparent look with soft pull-up effect.



TAUPE



TORTORA



CARAMEL



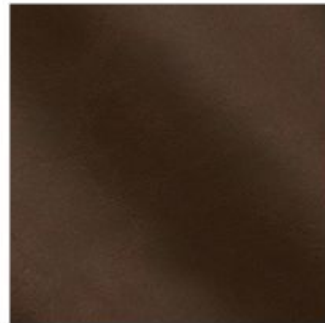
SADDLE



WENGE



EBANO



TOBAC



APRICOT

TECHNICAL INFORMATION

Composition: 100% Leather, Tear strenght - single edge tear: UNI EN ISO 3377-1, Measurement Unit N, Guaranteed ≥ 20 Colour fastness to rubbing - Dry 50 Cycles: UNI EN ISO 11640:1998, Measurement Unit - Grey Scale, Guaranteed ≥ 3 Colour fastness to rubbing - Wet 10 Cycles: UNI EN ISO 11640:1998, Measurement Unit - Grey Scale, Guaranteed ≥ 3 Color fastness to artificial light - Exposition energy 16.000 kj/sqm: UNI EN ISO 105 B02 (MET. 5), Measurement Unit - Grey Scale, Guaranteed ≥ 2 , Burning behaviour to cigarette and match flame: BS EN 1021-1-2 : 2006, BS 5852:1979, Guaranteed Pass Please note that colours displayed may vary slightly from the actual product. Therefore, we recommend requesting samples before ordering.

LEATHER KALAUSI



EMERALD



OXIDE



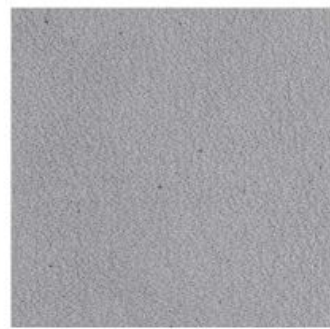
INK

TECHNICAL INFORMATION

Composition: 100% Leather, Tear strength - single edge tear: UNI EN ISO 3377-1, Measurement Unit N, Guaranteed ≥ 20 Colour fastness to rubbing - Dry 50 Cycles: UNI EN ISO 11640:1998, Measurement Unit - Grey Scale, Guaranteed ≥ 3 Colour fastness to rubbing - Wet 10 Cycles: UNI EN ISO 11640:1998, Measurement Unit - Grey Scale, Guaranteed ≥ 3 Color fastness to artificial light - Exposition energy 16.000 kJ/sqm: UNI EN ISO 105 B02 (MET. 5), Measurement Unit - Grey Scale, Guaranteed ≥ 2 , Burning behaviour to cigarette and match flame: BS EN 1021-1-2 : 2006, BS 5852:1979, Guaranteed Pass Please note that colours displayed may vary slightly from the actual product. Therefore, we recommend requesting samples before ordering.

LEATHER KERAS

Keras has a grain which varies in structure and offers outstanding comfort. It is an aniline leather with all the distinct features of the natural hide.



01065



11045



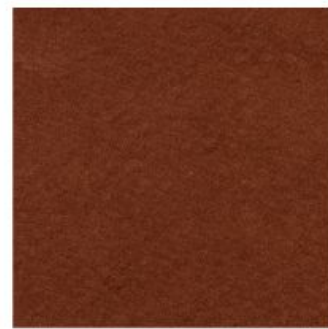
12136



13065



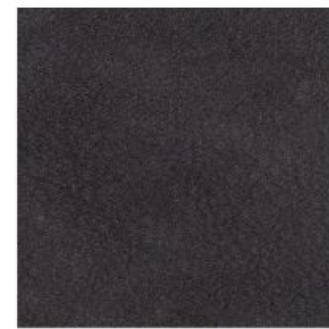
13066



33088



44020



91114

TECHNICAL INFORMATION

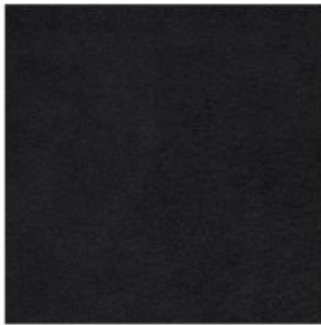
Composition: 100% Leather, Lightfastness 3, Wet-rubbing 20/3, Dry-rubbing 50/4, Tear-strength 20 N, Thickness 1.3-1.5 mm
Certificate; ISO 8191 - 1,2

Please note that colours displayed may vary slightly from the actual product. Therefore, we recommend requesting samples before ordering.

LEATHER KERAS



91115



99126

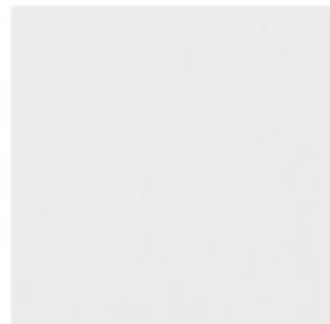
TECHNICAL INFORMATION

Composition: 100% Leather, Lightfastness 3, Wet-rubbing 20/3, Dry-rubbing 50/4, Tear-strength 20 N, Thickness 1.3-1.5 mm
Certificate: ISO 8191 - 1,2

Please note that colours displayed may vary slightly from the actual product. Therefore, we recommend requesting samples before ordering.

LEATHER LEASATH

Leasath is a flat aniline with smooth and naked surface with no or little grain. The leather offers the highest comfort and the process allows all characteristics such as scars, insect bites and neck wrinkles to remain. When you think of the softest, smoothest, and most exclusive leather, that's aniline, our most natural product. It's only given a gentle surface treatment to withstand dirt. All in all, aniline is bare, with its natural beauty retained and exposed. Signs of life, such as creases, fat lines, grain differences, insect bites and small healed wounds, guarantee the finest quality and authenticity.



01022



33072



99092



91106



93104

TECHNICAL INFORMATION

Composition: 100% Leather, Liftfastness 3 (ISO 105-B02), Wet-rubbing 20/4 (ISO 11640), Dry-rubbing 50/4 (ISO 11640), Sweat 20/4 (ISO 11640), Tear-strength 20 N (DIN 53329-A, Thickness 1.0-1.3 mm).

Certificates: EN 1021 - 1,2

Please note that colours displayed may vary slightly from the actual product. Therefore, we recommend requesting samples before ordering.

LEATHER LIBERTAS

Libertas is a nubuckleather with a warm and charming look. A flat anilinhide has been lightly sanded to obtain a discrete write effect. Even at the first contact the customer is surprised by the pleasant touch.



501



502



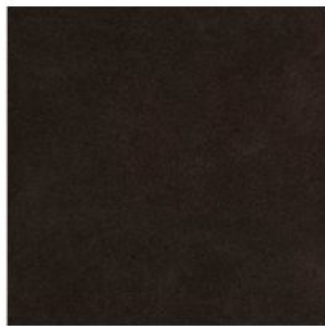
503



504



505



506



512



514

TECHNICAL INFORMATION

Composition: 100% Leather, Origin: South-german bullhides, Thickness: 1.2/1.4 mm, Treatment: Nubuck
Please note that colours displayed may vary slightly from the actual product. Therefore, we recommend requesting samples before ordering.

LEATHER LIBERTAS



515



517

TECHNICAL INFORMATION

Composition: 100% Leather, Origin: South-german bullhides, Thickness: 1.2/1.4 mm, Treatment: Nubuck
Please note that colours displayed may vary slightly from the actual product. Therefore, we recommend requesting samples before ordering.

LEATHER MARU

Bovine of European origin in Nabuk finishing, natural grain. This leather has a grain which varies in structure and offers outstanding comfort. A hide is selected at random from every batch of finished leather. Aniline dyed, finished with high quality oils. Suede look, soft and velvet touch. The possible presence of any imperfections testify the authenticity and the natural look of pure aniline leather.



CHALK



DOESKIN



CAQUI



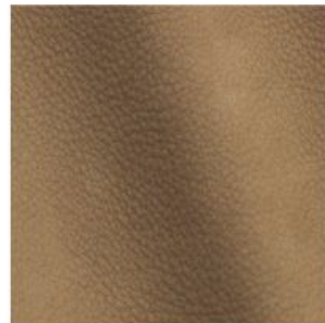
CHOCOLATE FOREST



CONCRETE



CANGAROO



ELEFANT



VISION

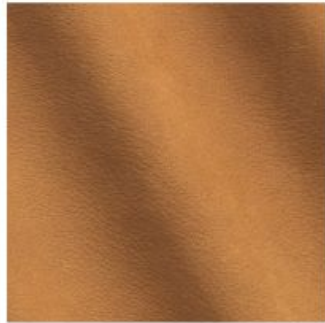
TECHNICAL INFORMATION

Composition: 100% Leather, Tear strength - single edge tear: UNI EN ISO 3377-1, Measurement Unit N, Guaranteed ≥ 20 Colour fastness to rubbing - Dry 50 Cycles: UNI EN ISO 11640:1998, Measurement Unit - Grey Scale, Guaranteed ≥ 3 Colour fastness to rubbing - Wet 10 Cycles: UNI EN ISO 11640:1998, Measurement Unit - Grey Scale, Guaranteed ≥ 3 Color fastness to artificial light - Exposition energy 16.000 kJ/sqm: UNI EN ISO 105 B02 (MET. 5), Measurement Unit - Grey Scale, Guaranteed ≥ 2 , Burning behaviour to cigarette and match flame: BS EN 1021-1-2 : 2006, BS 5852:1979, Guaranteed Pass Please note that colours displayed may vary slightly from the actual product. Therefore, we recommend requesting samples before ordering.

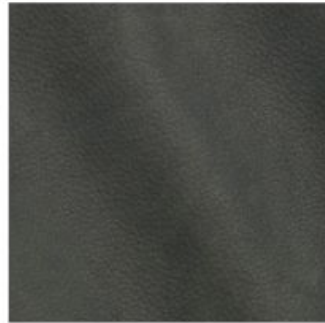
LEATHER MARU



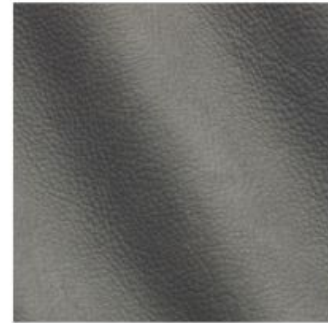
CARAMEL



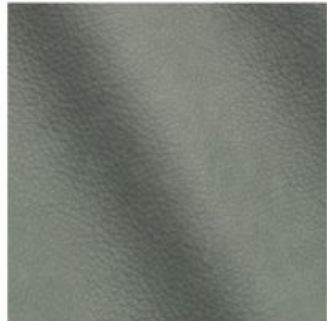
CUOIO



ARDESIA



EMATITE



GRAFITE



PLOMO



GENERE



LUCKY

TECHNICAL INFORMATION

Composition: 100% Leather, Tear strenght - single edge tear: UNI EN ISO 3377-1, Measurement Unit N, Guaranteed ≥ 20 Colour fastness to rubbing - Dry 50 Cycles: UNI EN ISO 11640:1998, Measurement Unit - Grey Scale, Guaranteed ≥ 3 Colour fastness to rubbing - Wet 10 Cycles: UNI EN ISO 11640:1998, Measurement Unit - Grey Scale, Guaranteed ≥ 3 Color fastness to artificial light - Exposition energy 16.000 kj/sqm: UNI EN ISO 105 B02 (MET. 5), Measurement Unit - Grey Scale, Guaranteed ≥ 2 , Burning behaviour to cigarette and match flame: BS EN 1021-1-2 : 2006, BS 5852:1979, Guaranteed Pass Please note that colours displayed may vary slightly from the actual product. Therefore, we recommend requesting samples before ordering.



LEATHER MARU NOIR

Maru Noir has a grain which varies in structure and offers outstanding comfort. It is an aniline leather with all the distinct features of the natural hide. All in all, aniline is bare, with its natural beauty retained and exposed. Signs of life, such as creases, fat lines, grain differences, insect bites and small healed wounds, guarantee the finest quality and authenticity.



99111



11035



22029



33073

TECHNICAL INFORMATION

Composition: 100% Leather, Liftfastness 3 (ISO 105-B02), Wet-rubbing 20/3 (ISO 11640), Dry-rubbing 50/4 (ISO 11640), Tear-strength 20 N (DIN 53329-A), Thickness 1.3-1.5 mm

Certificates: EN 1021 - 1,2

Please note that colours displayed may vary slightly from the actual product. Therefore, we recommend requesting samples before ordering.

BOUCLÉ AGATHA

Made with long, noble fibers that have been brushed after weaving, the loops of Agatha confer elegant restraint with their delicacy and incomparable softness.



NATUREL

TECHNICAL INFORMATION

Type - Hairy fabrics Bouclé fabrics Fibres douces, Utilisation - Normal use, Martindale > 25 000 T, Composition - 60 % Mohair 21 % Cotton 15 % Wool 4 % Polyester, Width 120 cm - 47,24 inch, Weight 1404 gr / m²
Certifications: BS5852 Cigarette & match test, EN1021-1-2 in conjunction with suitable combustion modified foam, NFPA 260-Class 1, CRIB 5 in conjunction with suitable combustion modified foam
Notes & Informations: Patina with use, Cutting for approval recommended, Boucle 100% wool, Reinforced stitching recommended to avoid fraying at seams
Kindly be aware that the colors shown may slightly differ from the actual product. We suggest requesting samples prior to placing an order.



BOUCLÉ BOBOO

This ultra-soft bouclé is made of exquisite Alpaca wool and cotton. The richness of the yarn is enhanced by the craftsmanship, which gives shape to fabrics with an uneven, textured appearance. The use of Alpaca wool provides outstanding softness and a warm, silky feel. Ideal for upholstery with a natural, textured look.



001 AGNELLO

TECHNICAL INFORMATION

Type - Cotton Bouclé, Utilisation - Normal use, Martindale 24000 T, Composition - 39% Alpaca 39% Wool 22% Cotton, Width - 132 cm, Weight - 1188 g/ml,
Please note that colours displayed may vary slightly from the actual product. Therefore, we recommend requesting samples before ordering.



BOUCLÉ ESTHER

A coarse linen weave for a very natural bouclette effect.



CREME



BEIGE

TECHNICAL INFORMATION

Type - Bouclé, Utilisation - Normal use, Martindale > 25 000 T, Composition - 79 % Wool 21 % Cotton, Width 124 cm - 48,81 inch, Weight 1161 gr / m²
Certifications: EN1021-1-2, BS5852 Cigarette & match test, NFPA 260-Class 1, CRIB 5 in conjunction with suitable combustion modified foam
Notes & Informations: Reinforced stitching recommended to avoid fraying at seams
Please note that colours displayed may vary slightly from the actual product. Therefore, we recommend requesting samples before ordering.



BOUCLÉ KALKUTA

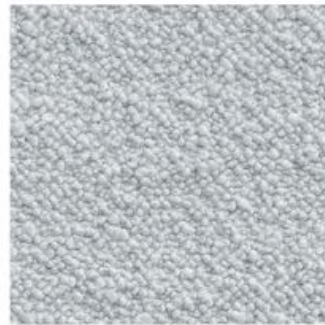
A bouclé that intertwines wool and viscose in an uneven texture of loops and curls, inspired by precious astrakhan furs. With its soft and bulky hand-feel, this fabric is ideal for upholstery destined for an intensive use.



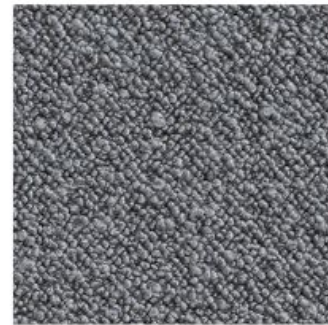
001 IVORY



002 DUNA



004 PERLA



005 ANTRACITE



006 CHARCOAL



007 ECUME



008 NUDE

TECHNICAL INFORMATION

Type - Bouclé, Utilisation - Normal use, Martindale > 25 000 T, Composition - 79 % Wool 21 % Cotton, Width 124 cm - 48,81 inch, Weight 1161 gr / m²
Certifications: EN1021-1-2, BS5852 Cigarette & match test, NFPA 260-Class 1, CRIB 5 in conjunction with suitable combustion modified foam
Notes & Informations: Reinforced stitching recommended to avoid fraying at seams
Please note that colours displayed may vary slightly from the actual product. Therefore, we recommend requesting samples before ordering.



BOUCLÉ LOUISA

A thick wool bouclette for a chic but natural upholstery look.



CREME



PERLE

TECHNICAL INFORMATION

Type - Bouclé - Plains - Fibres douces, Utilisation - Intensive use, Martindale > 25 000 T, Composition - 41 % Wool 39 % Alpaca 17 % Cotton 3 % Acrylic, Width 133 cm - 52,36 inch, Weight 1328 gr / m²
Certifications: EN1021-1-2, BS5852 Cigarette & match test, NFPA 260-Class 1, CRIB 5 in conjunction with suitable combustion modified foam
Notes & Informations: Reinforced stitching recommended to avoid fraying at seams
Please note that colours displayed may vary slightly from the actual product. Therefore, we recommend requesting samples before ordering.



BOUCLÉ POTTER

This warm and resistant wool bouclé is full of spontaneity and softness. The delicate colour palette, including natural tones and darker shades, enhances the intrinsic nature of wool.



001 TESTA DI MORO



002 TOPO



003 TORTORA



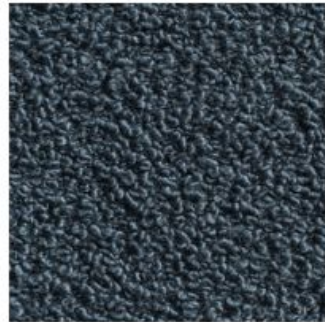
005 BREBIS



007 NUVOLA



009 LODEN



010 ARDESIA

TECHNICAL INFORMATION

Type - Bouclé, Utilisation - Normal use, Martindale 40000 T, Composition - 70% Wool 15% Cotton 10% Polyamide 5% Polyester, Width 140 cm, Weight 1040 gr / m²
Certifications: Oekotex, FR -Italy Class 11M, FR -Europe EN 1021 1&2, FR -USA CALIFORNIA TB117, FR - UK BS5852 CIGAR. TEST, FR - UK BS5852 CIG/MATCH, FR -UK GB 5852 CRIB 5, FR -USA NFPA 260
Please note that colours displayed may vary slightly from the actual product. Therefore, we recommend requesting samples before ordering.



HAIRY & TEXTURED

INKA

Inka is a soft, enveloping fabric in Alpaca Suri and wool. Suri is the rarest breed of alpaca, and produces an incredibly soft, smooth, lustrous fibre. For Incas, alpaca is used on the right side, while the reverse is wool. The resulting material is invitingly tactile, presenting a nap surface raised using gentle finishing techniques. For upholstery, curtains and decor.



TAUPE



CAFE' NOIR



BIANCORE



MARTORA

TECHNICAL INFORMATION

Type - Weave, Utilisation - Intensive use, Martindale 8 000, Composition - 75% Alpaca 25% Virgin Wool, Width 150 cm, Weight 680gr / ml

Kindly be aware that the colors shown may slightly differ from the actual product. We suggest requesting samples prior to placing an order.



HAIRY & TEXTURED

KHAN

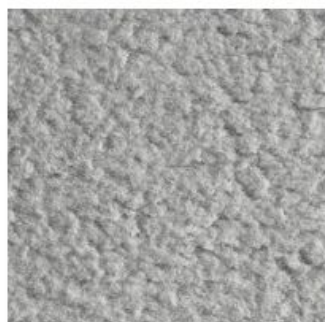
A velvet of thick, sumptuous, and irresistible alpaca wool. Khan evokes the latter's cuddly sensations: the typical curl makes it irregular and textural, while enhancing the essential range of colours that reflect the very nature of wool. Soft and thick, with water-repellent treatment.



001 DAINO



002 PECORA



003 KOALA



004 MILITAIRE



005 ORSO BRUNO

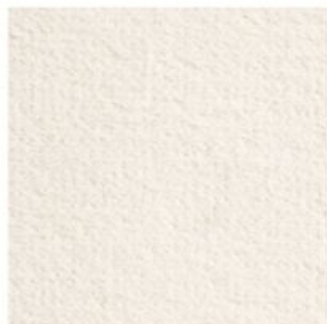
TECHNICAL INFORMATION

Type - Velvet, Utilisation - Normal use, Martindale 10.000 T, Composition - 37% Virgin Wool25% Alpaca20% Cotton18% Polyamide,
Width 132 cm, Weight 699 gr / ml
Please note that colours displayed may vary slightly from the actual product. Therefore, we recommend requesting samples
before ordering.



HAIRY & TEXTURED LOLIPOP

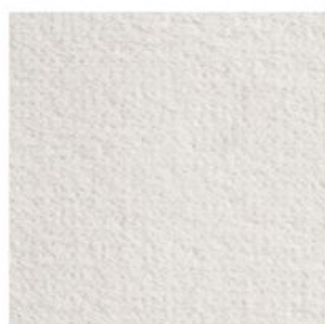
A pure cotton chenille, soft and compact like an animal mantle. The dense pile, carefully worked to enhance its beauty, celebrates the softest side of cotton. Comfortable and hardwearing, it is ideal for upholstery use.



001 SNOW WHITE



002 NATURELLE



003 PEARL GREY

TECHNICAL INFORMATION

Type - Cotton Bouclé, Utilisation - Normal use, Martindale 80000 T, Composition - 100% Cotton, Width - 133 cm, Weight - 963 g/ml, Certification - FR - UK BS5852 CIGAR. TEST
Please note that colours displayed may vary slightly from the actual product. Therefore, we recommend requesting samples before ordering.

HAIRY & TEXTURED MINIMA

A chenille of abstract inspiration and velvety voluptuousness is poised harmoniously between expressive delicacy and textural exuberance. The smooth round yarn is of high quality and endowed with remarkable softness, thanks to a special finishing process. Cozy, soft and compact, this fabric is interpreted in a palette of natural and delicate shades. Suitable for intensive upholstery use.



001 AVORIO



002 CIPRIA



003 LINO

TECHNICAL INFORMATION

Type - Bouclé fabrics, Utilisation - Intensive use, Martindale 48 000 T, Composition - 48% Viscose, 23% Cotton, 20% Linen, 4% Acrylic, 4% Polyamide, 1% Polyester, Width 130 cm, Weight 1516 g/ m²
Please note that colours displayed may vary slightly from the actual product. Therefore, we recommend requesting samples before ordering.



HAIRY & TEXTURED

MOUNTAINEER

Mountaineer is an iconic cashmere fabric designed for upholstery, curtains and décor, delivering the natural softness, inviting touch and welcoming warmth of cashmere. The mélangé shades are refined and versatile.



BLEND ZEN



SIATUNGA GOLD



SITATUNGA



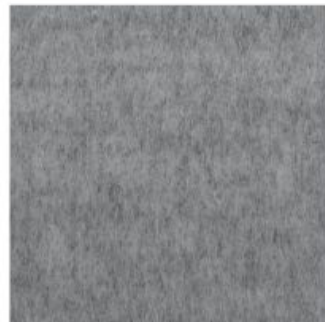
SAMPRASS



DARK MARENGO



MARENGO



LIGHT MARENGO



GASCONE

TECHNICAL INFORMATION

Type - Cashmere , Utilisation - Intensive use, Martindale 10.000 T, Composition - 100% - ounCashmere, Width 150 cm, Weight 480 gr / ml
Kindly be aware that the colors shown may slightly differ from the actual product. We suggest requesting samples prior to placing an order.

HAIRY & TEXTURED MOUNTAINEER



MUSCHIO



OLIVO



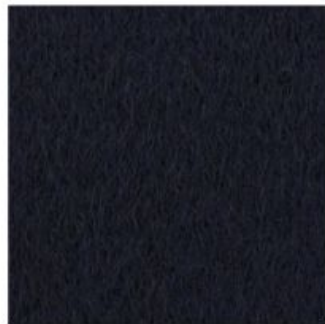
GINGER



GINGEMBAR



PIMENT DOUX



MAJESTIC BLUE



LO VAT

TECHNICAL INFORMATION

Type - Cashmere , Utilisation - Intensive use, Martindale 10.000 T, Composition - 100% - ounCashmere, Width 150 cm, Weight 480 gr / ml
Kindly be aware that the colors shown may slightly differ from the actual product. We suggest requesting samples prior to placing an order.

HAIRY & TEXTURED

OPHILIA ALPACA



010 LODEN



011 STORM BLUE



012 FORESTA



013 PRUGNA



014 RED FOX



015 TABACCO



016 MOUTARDE



017 NATURALE

TECHNICAL INFORMATION

Type - Alpaca Velour, Utilisation - Normal use, Martindale 15000 T, Composition - 75% Alpaca 25% Wool, Width 145 cm, Weight 548 gr / ml
Please note that colours displayed may vary slightly from the actual product. Therefore, we recommend requesting samples before ordering.

HAIRY & TEXTURED

TEDDYFUR

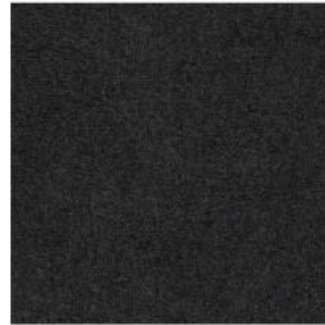
Teddyfur is an original interpretation of one of our signature materials: cashmere. It combines a strand of cashmere produced using specially selected fibre, and silk, and is crafted on circular knitting looms to create its distinctive fur-like consistency. Its natural softness is accentuated by delicate finishing processes. Teddyfur comes in the natural white shade of cashmere, or in a range of colours.



BIANCORE



KASHA



MARENGO



MAJESTIC BLUE

TECHNICAL INFORMATION

Type - Cashmere, Utilisation - Intensive use, Martindale 30.000 T, Composition - 85%-Cashmere 15%-Silk, Width 145 cm, Weight 830 gr / ml

Kindly be aware that the colors shown may slightly differ from the actual product. We suggest requesting samples prior to placing an order.

HAIRY & TEXTURED

URLA

The generosity and the wild beauty of the fleece of Alpaca – one of the finest fibers - is magnified in Urla, an exceptionally fine and dense velvet. Its three variants are just the natural colors of the fleece, without any dyeing process.



AVOIRO



EBANO



TERRA

TECHNICAL INFORMATION

Type - Fleece/Velvet with alpaca fur, Utilisation - Normal use, Martindale 120 000 T, Composition - 60% Alpaca 40% Cotton, 100% Alpaca, Width 130 cm, Weight 790 gr / ml, Pilling 5/0 (SCALE 1-5)
Kindly be aware that the colors shown may slightly differ from the actual product. We suggest requesting samples prior to placing an order.

VELVET BAL

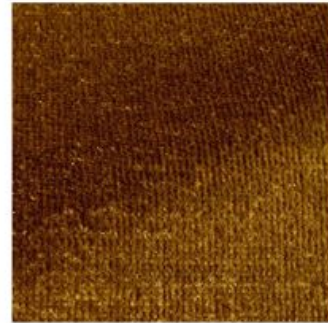
Bal is a beautiful hand-woven chenille that is particularly soft and supple, with a surprising vintage look thanks to a ground structure that is subtly revealed during the weaving process. This plain fabric is available in deep, distinctive shades.



CREME



GINGEMBRE



MORDORE



BISTRE



NOISETTE



BROU DE NOIX



CERISE



TOMETTE

TECHNICAL INFORMATION

Type - Velvet, Utilisation - Intensive use, Martindale 80.000 T, Composition - 48 % Polyester - 33 % Cotton - 13 % Viscose - 6 % Linen, Width 138 cm, Weight 952 gr / m²
Kindly be aware that the colors shown may slightly differ from the actual product. We suggest requesting samples prior to placing an order.



VELVET BAL



SENOIS



AMARANTE



ARDOISE



LIN



PASTEL



BLEUET



PRUSSE



MARINE

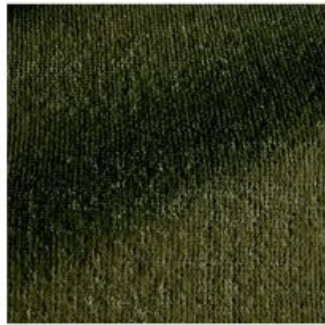
TECHNICAL INFORMATION

Type - Velvet, Utilisation - Intensive use, Martindale 80.000 T, Composition - 48 % Polyester - 33 % Cotton - 13 % Viscose - 6 % Linen,
Width 138 cm, Weight 952 gr / m²
Kindly be aware that the colors shown may slightly differ from the actual product. We suggest requesting samples prior to placing
an order.

VELVET BAL



CELADON



FORET



OLIVE



SAUGE

TECHNICAL INFORMATION

Type - Velvet, Utilisation - Intensive use, Martindale 80.000 T, Composition - 48 % Polyester - 33 % Cotton - 13 % Viscose - 6 % Linen, Width 138 cm, Weight 952 gr / m²
Kindly be aware that the colors shown may slightly differ from the actual product. We suggest requesting samples prior to placing an order.



VELVET BORDELLO

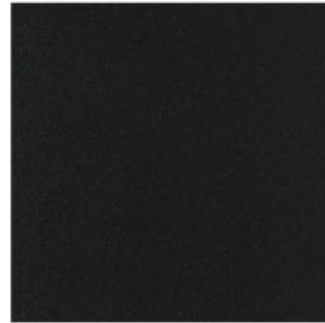
As luminous, soave and seductive as a poet's visions: this is cotton velvet in its most sumptuous form. With an extremely long and thick pile, its density calls for several yarn-dyeing sessions to saturate its colour and achieve the exact tone desired in a range of intense shades. With a compact hand-feel, it is suitable for seating use.



001 MOSTARDA



002 TABACCO



003 QUASINERO



004 VERDE CHESTER-
FIELD



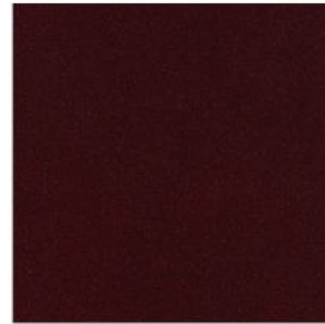
005 LAGO



006 INDIGO



007 BLEU DE RUSSE



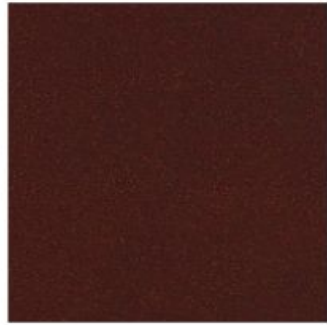
008 BORDEAUX

TECHNICAL INFORMATION

Type - Velvet, Utilisation - Intensive use, Martindale 100 000 T, Composition - 96% Cotton 4% Modal, Width 135 cm, Weight 1132 gr / ml

Please note that colours displayed may vary slightly from the actual product. Therefore, we recommend requesting samples before ordering.

VELVET BORDELLO



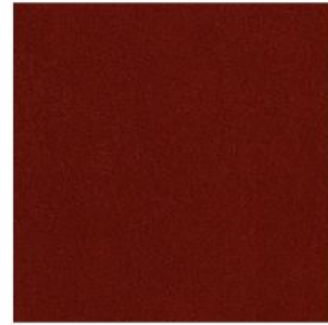
009 TEGOLA



010 TERRACOTTA



011 MAGNOLIA



012 CORALLO

TECHNICAL INFORMATION

Type - Velvet, Utilisation - Intensive use, Martindale 100 000 T, Composition - 96% Cotton4% Modal, Width 135 cm, Weight 1132 gr / ml
Please note that colours displayed may vary slightly from the actual product. Therefore, we recommend requesting samples before ordering.

VELVET GRIZZLY BEAR

Very attractive velvet with long mohair.



IVOIRE



CREME



MIEL



TAUPE



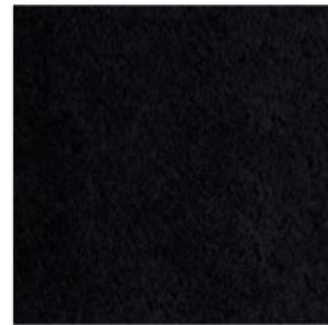
MOKA



CAFE



GRIS SOURIS



NOIR

TECHNICAL INFORMATION

Type - Plains - Velvets, Utilisation - Intensive use, Martindale 85.000 T, Composition - 65 % Mohair 35 % Cotton, Width 141 cm, Weight 1270 gr / m²

Certifications: EN1021-1-2, BS5852 Cigarette & match test, CLASSE UNO, NFPA 260-Class 1, CRIB 5

Notes & Informations: Can be embossed, Pile 100% mohair

Please note that colours displayed may vary slightly from the actual product. Therefore, we recommend requesting samples before ordering.



VELVET GRIZZLY BEAR



MARINE



MOUTARDE



OLIVE



MOUSSE



ACAJOUR



CARMEL



GRAMINEES



BAMBI

TECHNICAL INFORMATION

Type - Plains - Velvets, Utilisation - Intensive use, Martindale 85.000 T, Composition - 65 % Mohair 35 % Cotton, Width 141 cm, Weight 1270 gr / m²

Certifications: EN1021-1-2, BS5852 Cigarette & match test, CLASSE UNO, NFPA 260-Class 1, CRIB 5

Notes & Informations: Can be embossed, Pile 100% mohair

Please note that colours displayed may vary slightly from the actual product. Therefore, we recommend requesting samples before ordering.

VELVET GRIZZLY BEAR



PERLE



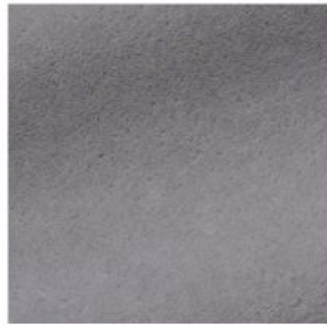
ELEPHANT



HERISSON



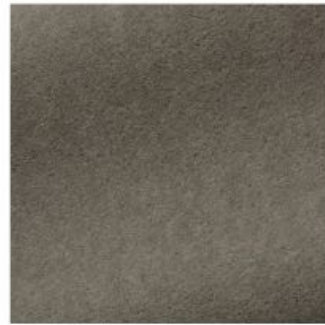
DUNE



TOURTERELLE



PLUME



ECORCE



NACRE

TECHNICAL INFORMATION

Type - Plains - Velvets, Utilisation - Intensive use, Martindale 85.000 T, Composition - 65 % Mohair 35 % Cotton, Width 141 cm, Weight 1270 gr / m²

Certifications: EN1021-1-2, BS5852 Cigarette & match test, CLASSE UNO, NFPA 260-Class 1, CRIB 5

Notes & Informations: Can be embossed, Pile 100% mohair

Please note that colours displayed may vary slightly from the actual product. Therefore, we recommend requesting samples before ordering.

VELVET GRIZZLY BEAR



SABLE



CHOCO

TECHNICAL INFORMATION

Type - Plains - Velvets, Utilisation - Intensive use, Martindale 85.000 T, Composition - 65 % Mohair 35 % Cotton, Width 141 cm, Weight 1270 gr / m²

Certifications: EN1021-1-2, BS5852 Cigarette & match test, CLASSE UNO, NFPA 260-Class 1, CRIB 5

Notes & Informations: Can be embossed, Pile 100% mohair

Please note that colours displayed may vary slightly from the actual product. Therefore, we recommend requesting samples before ordering.

VELVET

HAUTE ALPACA

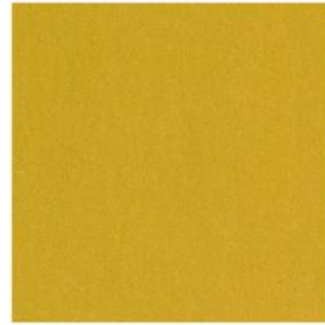
Finest alpaca wool velvet of timeless allure. With its deep pile and warm caressing feel, this fabric is snug and irresistible. The subtle melange effect is fruit of outstanding savoir-faire in the colouring of materials, involving a 3-colour yarn-dyeing process prior to spinning. The lavish colour palette enhances the essence of the fibres, with inclusions of the more classic shades of wool and other more personalized accents. An extremely soft fabric.



001 BORDEAUX



002 AUBERGINE



003 MAIS



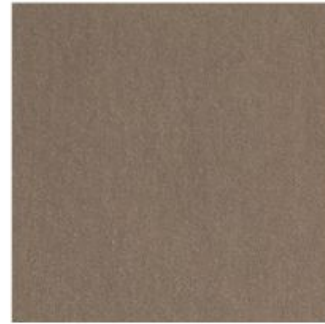
004 MOUTARDE



005 JADE



006 OLIVE



007 LEPROTTO



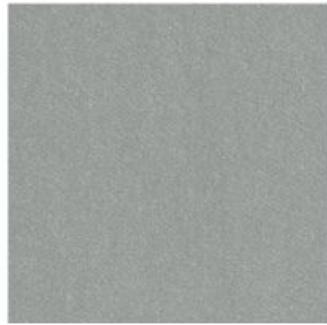
008 DAINO

TECHNICAL INFORMATION

Type - Viscose, Utilisation - Intensive use, Martindale 35.000 T, Composition - 41% Wool28% Alpaca16% Cotton11% Polyester4%, Width 140 cm, Weight 887 gr / ml
Please note that colours displayed may vary slightly from the actual product. Therefore, we recommend requesting samples before ordering.

VELVET

HAUTE ALPACA



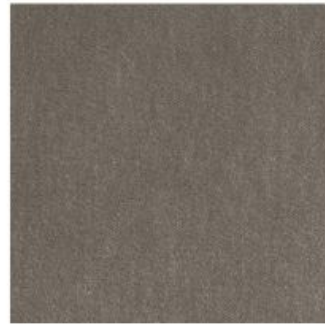
009 KOALA



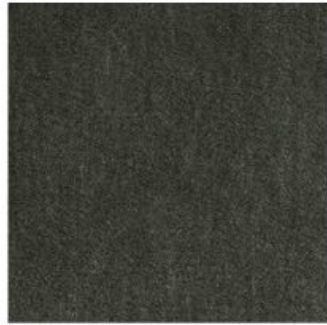
010 NEBELUNG



011 ORSO BRUNO



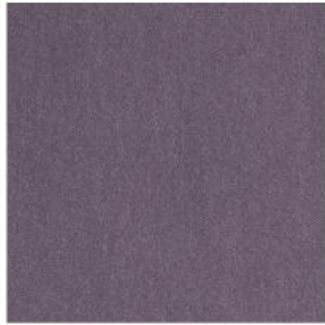
012 LUPO



013 MILITAIRE



014 TABACCO



015 LAVANDA



016 CELADON

TECHNICAL INFORMATION

Type - Viscose, Utilisation - Intensive use, Martindale 35.000 T, Composition - 41% Wool28% Alpaca16% Cotton11% Polyester4%, Width 140 cm, Weight 887 gr / ml

Please note that colours displayed may vary slightly from the actual product. Therefore, we recommend requesting samples before ordering.

VELVET

HAUTE ALPACA



017 LAGO



018 NOTTE



019 BLEU DE PRUSSE



020 TEGOLE



021 SCOIATTOLO



023 NUDE



024 BILIARDO



025 DEEP FOREST

TECHNICAL INFORMATION

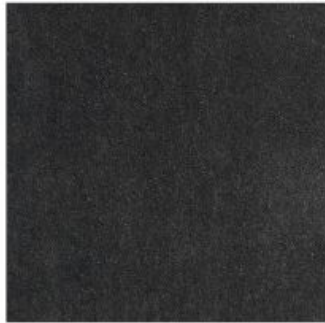
Type - Viscose, Utilisation - Intensive use, Martindale 35.000 T, Composition - 41% Wool28% Alpaca16% Cotton11% Polyester4%, Width 140 cm, Weight 887 gr / ml
Please note that colours displayed may vary slightly from the actual product. Therefore, we recommend requesting samples before ordering.

VELVET IVANO

Ultra-soft velvet in Kid Mohair: a fine precious fiber, lustrous and impurity-free, obtained from the first shear of the Angora goat. It combines tactile and aesthetic qualities with easy care and making up, thanks to the careful choice of pile density and height. This velvet is naturally durable and has fire-retardant properties.



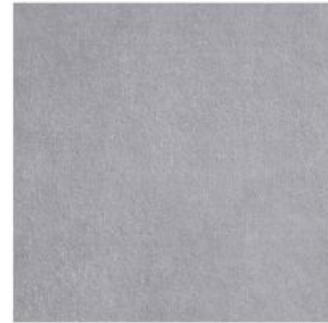
001 QUASINERO



002 ANTRACITE



003 STORM BLUE



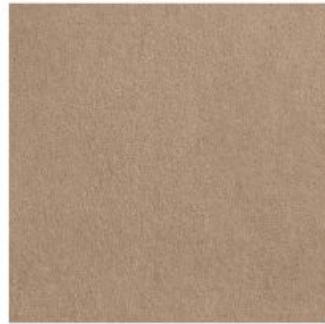
004 PERLA



005 BANQUISE



006 ORSO POLARE



007 CAMEL



008 CORDA

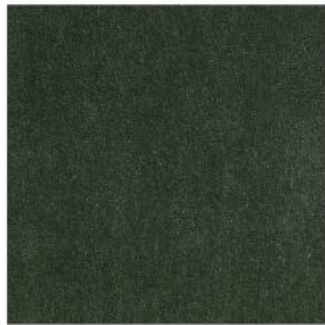
TECHNICAL INFORMATION

Type - Mohair Velvet, Utilisation - Normal use, Martindale 80000 T, Composition - 62% Mohair 38% Cotton, Width 135 cm, Weight 923 gr / ml
Certifications: FR -Italy Class 11M, FR -Europe EN 1021 1&2, FR -USA CALIFORNIA TB117, FR - UK BS5852 CIGAR. TEST, FR - UK BS5852 CIG/MATCH, FR -UK GB 5852 CRIB 5
Please note that colours displayed may vary slightly from the actual product. Therefore, we recommend requesting samples before ordering.

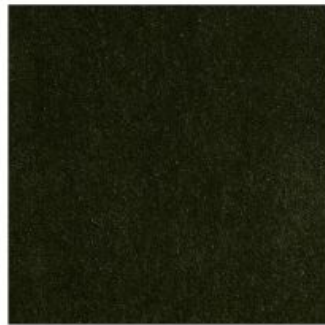
VELVET IVANO



009 TAUPE



010 MILITAIRE



011 MOUSSE



012 LICHEN



013 MOUTARDE



014 MOSTO COTTO



015 BORDEAUX



016 ZUCCA

TECHNICAL INFORMATION

Type - Mohair Velvet, Utilisation - Normal use, Martindale 80000 T, Composition - 62% Mohair 38% Cotton, Width 135 cm, Weight 923 gr / ml

Certifications: FR -Italy Class 11M, FR -Europe EN 1021 1&2, FR -USA CALIFORNIA TB117, FR - UK BS5852 CIGAR. TEST, FR - UK BSS852 CIG/MATCH, FR -UK GB 5852 CRIB 5

Please note that colours displayed may vary slightly from the actual product. Therefore, we recommend requesting samples before ordering.

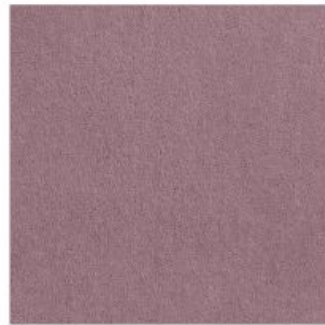
VELVET IVANO



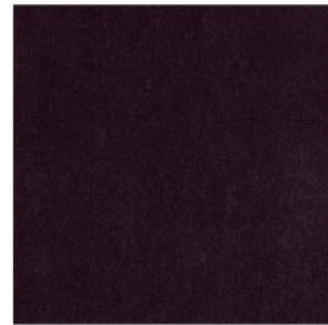
017 TERRACOTTA



018 TENDER ROSE



019 LILLA



020 PRUGNA



021 NAVY



022 BLEU NATTIER



023 ACQUA



025 VERDE BOTTIGLIA

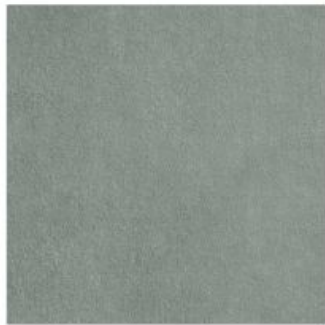
TECHNICAL INFORMATION

Type - Mohair Velvet, Utilisation - Normal use, Martindale 80000 T, Composition - 62% Mohair 38% Cotton, Width 135 cm, Weight 923 gr / ml
Certifications: FR -Italy Class 11M, FR -Europe EN 1021 1&2, FR -USA CALIFORNIA TB117, FR - UK BS5852 CIGAR. TEST, FR - UK BS5852 CIG/MATCH, FR -UK GB 5852 CRIB 5
Please note that colours displayed may vary slightly from the actual product. Therefore, we recommend requesting samples before ordering.

VELVET IVANO



025 VERDE BOTTIGLIA



026 GRIS CENDRE



027 SOUFRE



028 TABACCO



030 BLEU JEANS



031 LINO

TECHNICAL INFORMATION

Type - Mohair Velvet, Utilisation - Normal use, Martindale 80000 T, Composition - 62% Mohair 38% Cotton, Width 135 cm, Weight 923 gr / ml
Certifications: FR -Italy Class 11M, FR -Europe EN 1021 1&2, FR -USA CALIFORNIA TB117, FR - UK BS5852 CIGAR. TEST, FR - UK BS5852 CIG/MATCH, FR -UK GB 5852 CRIB 5
Please note that colours displayed may vary slightly from the actual product. Therefore, we recommend requesting samples before ordering.

VELVET

MORTENSEN

Shimmer and softness are the principal qualities of this silk and cotton velvet with an incomparable feel. Presented in refined colors, it will find a place in both traditional and contemporary interiors. The very high quality of the cotton and silk threads chosen for this velvet capture light and reveal the full depth of the colors and their precious, glowing highlights. Careful attention has been paid to weave density, giving the fabric an exceptional feel that expresses the luxury of this velvet.



CREME



CRAIE



CARMEL



CA CA O



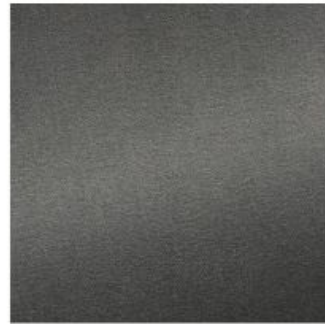
BOIS



SOURIS



ELEPHANT



ARDOISE

TECHNICAL INFORMATION

Type - Cotton Velvet, Utilisation - Intensive use, Martindale > 100 000 T, Composition - 88 % Cotton - 12 % Silk, Width 142 cm, Weight 940 gr / ml

Certifications - BS5852 Cigarette & match test, EN1021-1-2 in conjunction with suitable combustion modified foam

Kindly be aware that the colors shown may slightly differ from the actual product. We suggest requesting samples prior to placing an order.

VELVET MORTENSEN



CHARBON



NUIT



MAÉLOT



CACTUS



AMANDE



POUDRE

TECHNICAL INFORMATION

Type - Cotton Velvet, Utilisation - Intensive use, Martindale > 100 000 T, Composition - 88 % Cotton - 12 % Silk, Width 142 cm, Weight 940 gr / ml

Certifications - BS5852 Cigarette & match test, EN1021-1-2 in conjunction with suitable combustion modified foam

Kindly be aware that the colors shown may slightly differ from the actual product. We suggest requesting samples prior to placing an order.