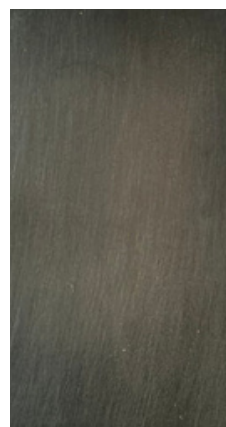


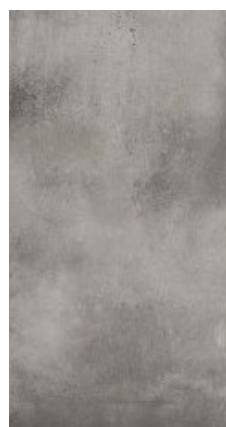
STEEL



Brushed polished stainless steel

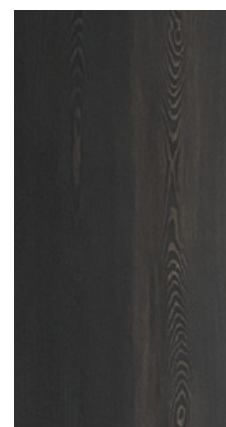


Patinated steel (Canon de Fusil)



Aluminium

WOOD

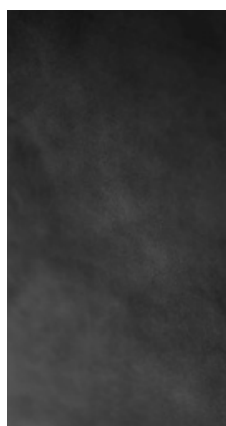


Sandblasted lariks dark stained



Sandblasted lariks white bleached

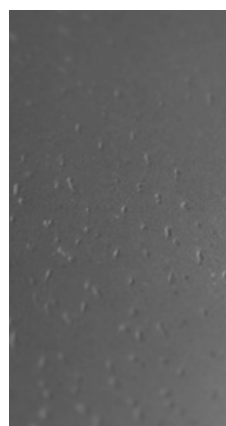
FINISHED STEEL



Weathered chrome (mirror)
available black | bronze | deep red

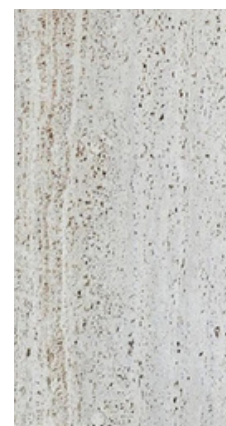


Bronze matt



Tin

STONE



Travertine



Muschelkalk



Flamed earth
available black | bronze