

MATERIAL ANTHOLOGY

GIOPAGANI

INDEX

FABRIC

DEDAR MILANO

SCHWARZWALD	8
ALEXANDER	10
TIGER MOUNTAIN	12
SAXOPHONE	14
CHAPEAU	16
GRAND NATTÈ	18
PATCHWORK	20
NIMBUS	22
PLUSHY	24
TEMPERA	26
THELONIOUS	28

RUBELLI

RATTOPPATO	30
JAVA	32
SECOND FIRING	34
CHIAROSCURO	36
WOBBLE GRID	38
DERBY TOILE	40
NEXUS	42
FILIGRANA	44
SING	46

GIOPAGANI

TALENT	48
POP	50
ORION	52

LEATHER

SHINING	56
TIMELESS	58
VELVET	60
TOUCH	62
ROUGH	64

WOOD

WOOD	68
------	----

MARBLE

MARBLE	72
--------	----

METAL

METAL	76
-------	----

GLASS

GLASS	80
-------	----

CRAYON COLOR

CRAYON	84
--------	----

CARE & MANTENANCE

CARE & MANTENANCE	88
-------------------	----

BESPOKE SOUL

Each product comes from the encounter between an increasingly demanding international clientele in search of sophisticated personalized items, and a company driven by a passion for high craftsmanship, research and creative development.

We consider every product as tailor-made and unique. Design at GIOPAGANI is about capturing the right feeling for a particular project and the people whom we are designing for. Being a multidisciplinary design studio gives us the unique advantage of being able to take on any and every aspect that an aesthetic design may entail.

Thanks to our experience in the production of high-end design furniture, our style department is able to follow each client and focus on the best choice for the creation of unique pieces in relation to materials, processes, shapes, functions. The care and excellence of GIOPAGANI unique pieces arise from the synergy between creativity, technical knowledge and the skills of our production chain, expression of the best Italian industrial craftsmanship.

GIOPAGANI offers its expertise as a partner for special projects in the customization of its products to make them unique in formats and finishes, born from the specific needs of the client. From design to implementation, each phase is followed with the utmost care, and subjected to functional checks, set-up, finish, resistance to guarantee the final quality of the product.

The GIOPAGANI material anthology is designed to give design lovers the inspiration to create objects and spaces that represent their own style. The selection features bold and statement-making finishes that capture the attention and set the mood of the space, enhancing the design features.

Continuously listening to the needs of its clients, always looking for something exclusive, GIOPAGANI provides further possibilities to customize its upholstery, by partnering with the luxury textile editors Dedar, Rubelli and "GIOPAGANI Selection" that give access to their infinite catalogs of textures and patterns to tailor all of our products even beyond our selection.

The quality and preciousness of the unique pieces created are the result of creative and technical processes put in place to face requests of every degree of complexity. Not only a visual experience but also a tactile and sensorial one. A journey through aesthetics and technique that leads to the discovery of unique materials.

Combining contrasting ideas, GIOPAGANI's collection of juxtaposing concepts crafts evocative narratives that move and inspire.



FABRIC

SCHWARZWALD

DEDAR

MILANO



VERDURE



AUTOMNE



BLEU NUIT

A linen fabric, whose pictorial personality is defined by the printed reproduction of a 17th century design, which transforms into a contemporary tapestry to revive one of the noblest forms of the textile tradition, thanks to a modern-day sensitivity.

CAT. : A

Composition: 60% Viscose, 16% Linen, 13% Cotton, 6% Polyester, 5% Polyacrylic

Martindale: 15.000

Pattern Repeat: width 138cm - height 88cm



*PLEASE NOTE: The colors represented may not correspond to the actual color of the material. For a perfect match please contact our customer service to request a sample.

ALEXANDER

DEDAR
MILANO



Extra-fine Australian merino wool interprets a densely woven long-pile velvet that is yarn-dyed and soft to the touch. Long-lasting and resistant, Alexander is ideal for medium/intensive use seating.

CAT. : A
Composition: 54% Fleece wool, 34% Cotton,
12% Polyester
Martindale: 30.000



MATTONE TULIPE ARGENTO PERLE AVORIO



ARGILE TAUPE NERO ANTRACITE BEIGE



TORTORA FLAMANT ROSE GRENADE OLIVA LODEN



PETROLE NOTTE DORURE CELADON JADE



PAON AMARANTE TABACCO NAKED PEACH GLACIER



STORM BLUE

*PLEASE NOTE: The colors represented may not correspond to the actual color of the material. For a perfect match please contact our customer service to request a sample.

TIGER MOUNTAIN

DEDAR

MILANO

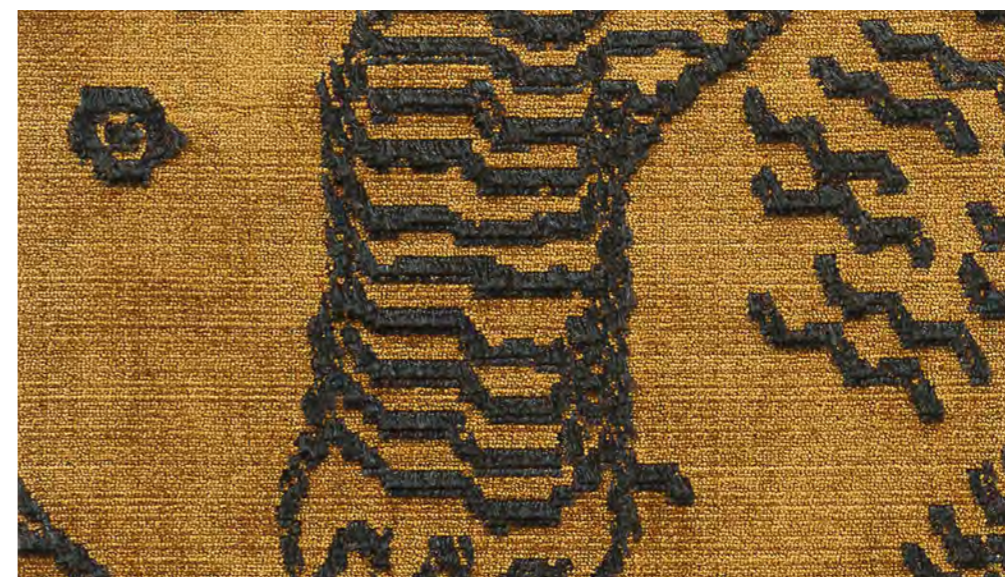


A jacquard velvet with a strong personality and expressive capacity, originally inspired by Tibetan carpets but open to personal interpretations. A versatile fabric that lends itself to seating applications.

CAT. : A
Composition: 63% Viscose, 37% Cotton
Martindale: 40.000
Pattern Repeat: width 69cm - height 84,5cm



GRAPHITE



FAUVE

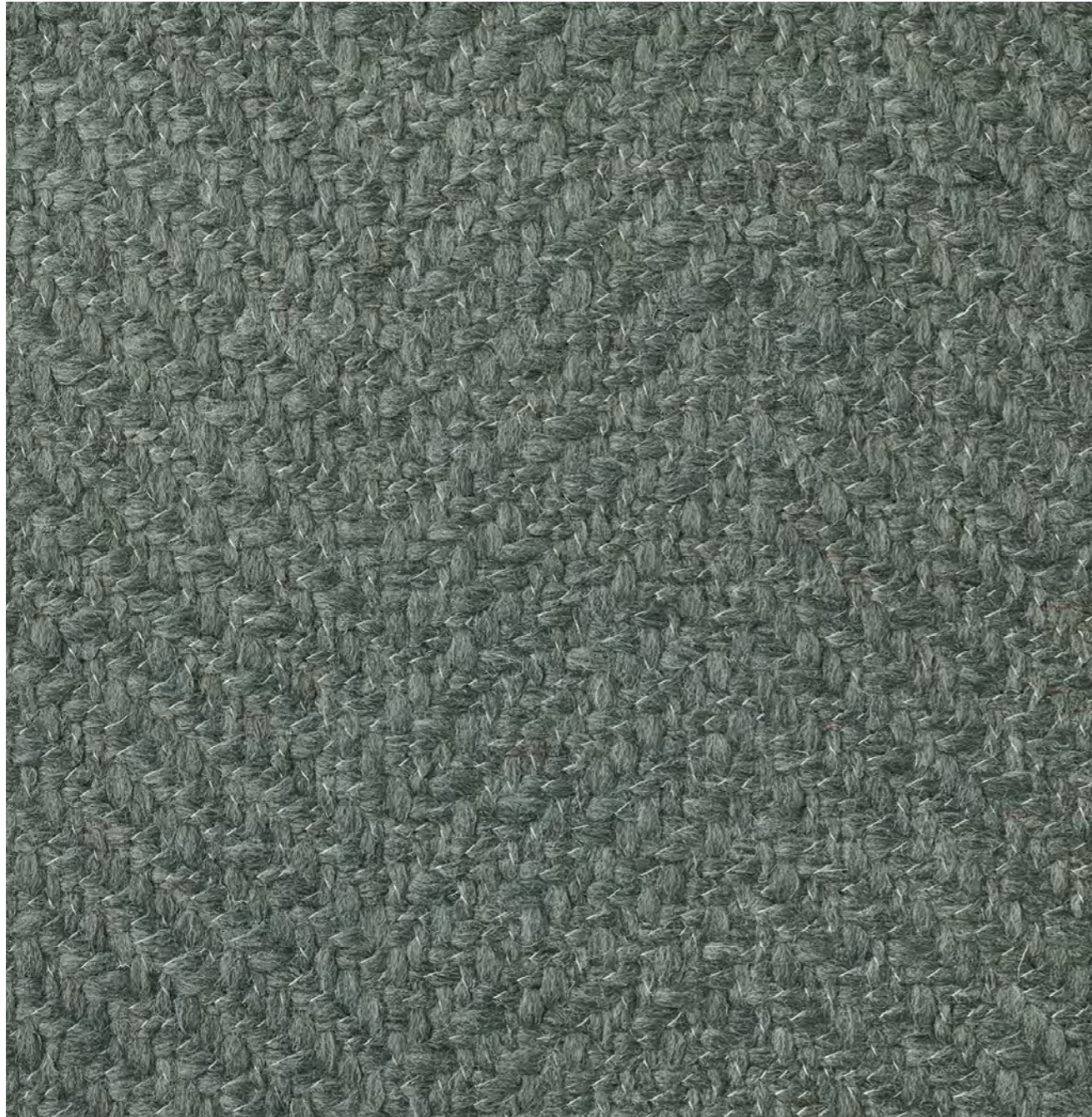


PETRIFIED WOOD

*PLEASE NOTE: The colors represented may not correspond to the actual color of the material. For a perfect match please contact our customer service to request a sample.

SAXOPHONE

DEDAR MILANO



A chevron made from Australian virgin wool with a fresh sartorial look. It is a hardwearing fabric, with a distinctive textural quality, in which structure takes centre stage.

CAT. : B
Composition: 43% Wool, 32% Cotton,
25% Polyacrylic
Martindale: >40.000



POLAR WHITE



LINEN

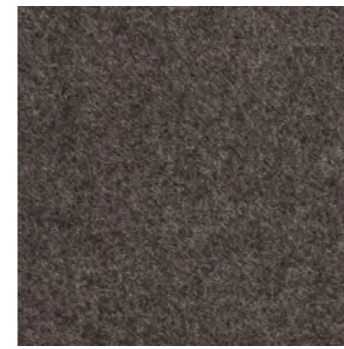
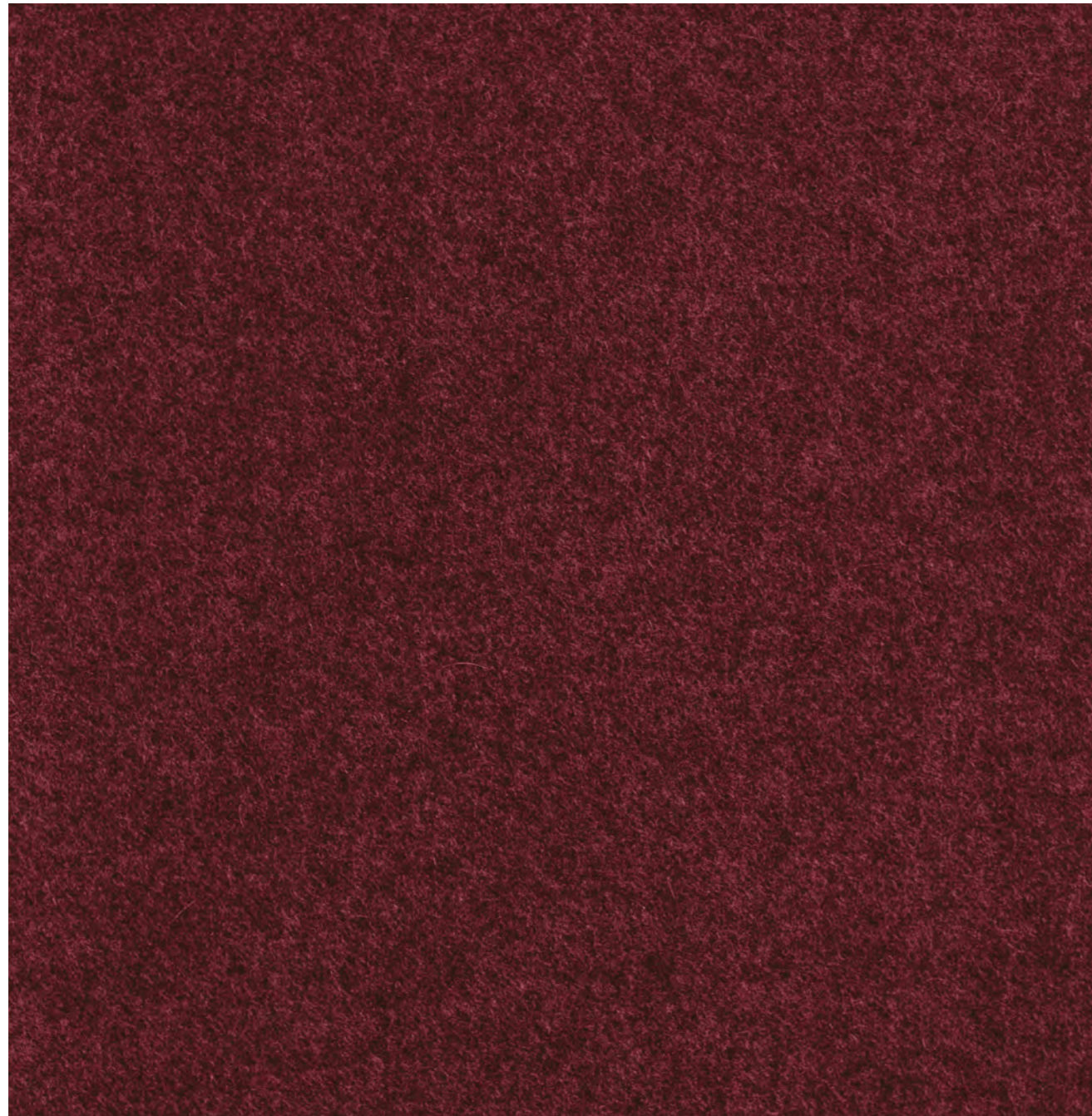


LODEN

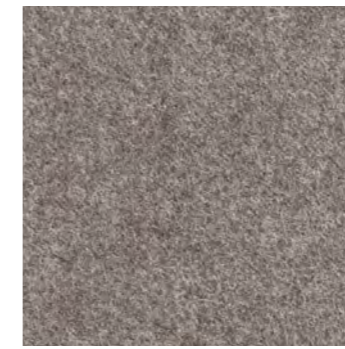
*PLEASE NOTE: The colors represented may not correspond to the actual color of the material. For a perfect match please contact our customer service to request a sample.

CHAPEAU

DEDAR
MILANO



EBANO



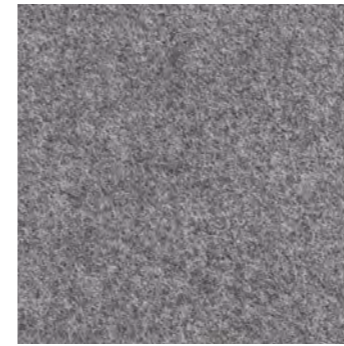
TAUPE



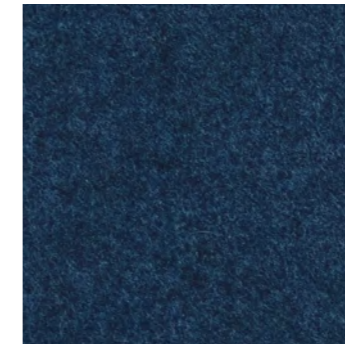
SILEX



PERLA



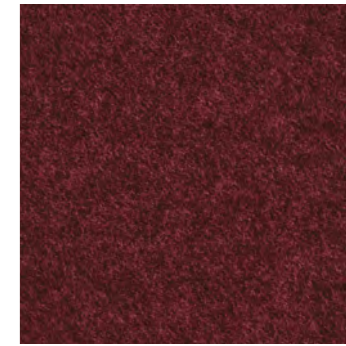
ARDESIA



INDIGO



MIRTILLO



BORDEAUX



PAPRIKA



SENAPE



LODEN



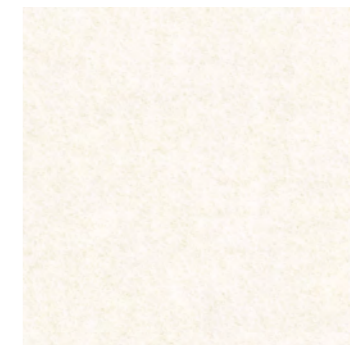
CELADON



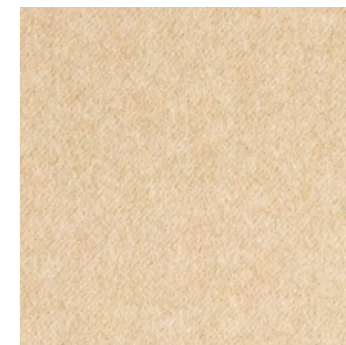
ROSA



BEIGE



AVORIO



CAMMELLO



TABACCO

A reversible sartorial cloth in pure virgin wool, inspired by traditional wool cloaks and hats. Fruit of a complex manufacturing process, this fabric is bulky, resistant to abrasion and hardwearing.
For medium-intensive seating applications.

CAT. : B
Composition: 100% Fleece wool
Martindale: 40.000



*PLEASE NOTE: The colors represented may not correspond to the actual color of the material. For a perfect match please contact our customer service to request a sample.

GRAND NATTÈ

DEDAR MILANO



Made from brushed cotton braid of different dimensions and woven on special looms that allow for the use of such elaborate materials. The high quality of this hardwearing brushed cotton explains its delicate sheen and soft hand. The interlacings on the reverse side add stability to the fabric when being made up. Its weight and resistance to abrasion make it ideal for upholstery applications.

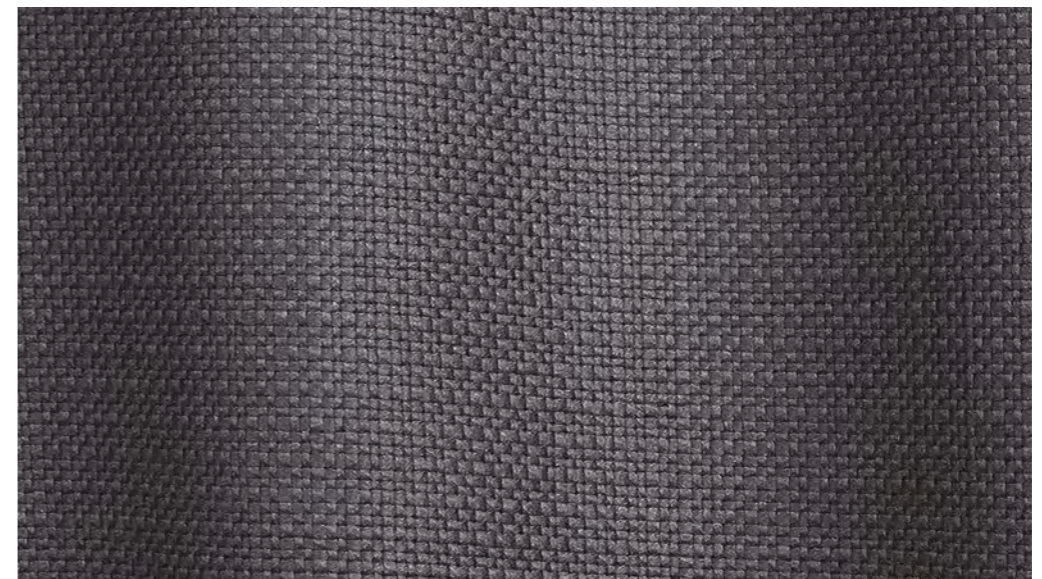
CAT. : B
Composition: 100% Cotton
Martindale: 20.000



BIANCO



NATURALE



QUASINERO

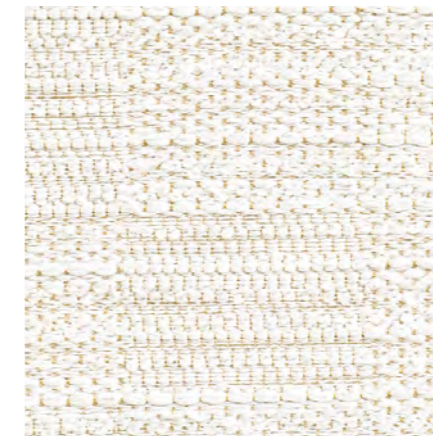
*PLEASE NOTE: The colors represented may not correspond to the actual color of the material. For a perfect match please contact our customer service to request a sample.

PATCHWORK

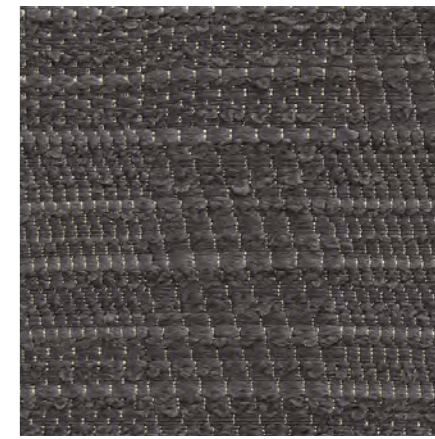
DEDAR MILANO



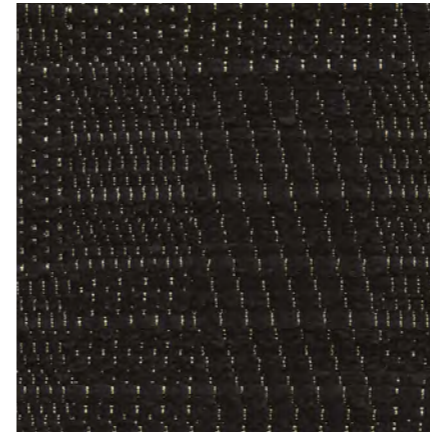
PEARL



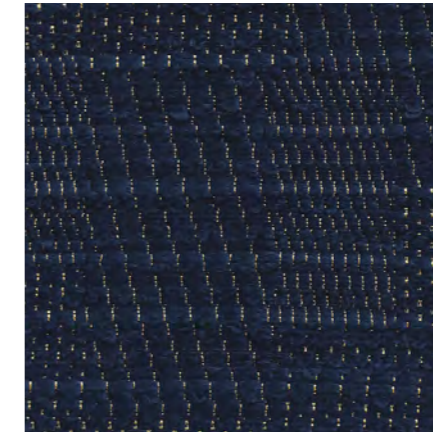
IVORY



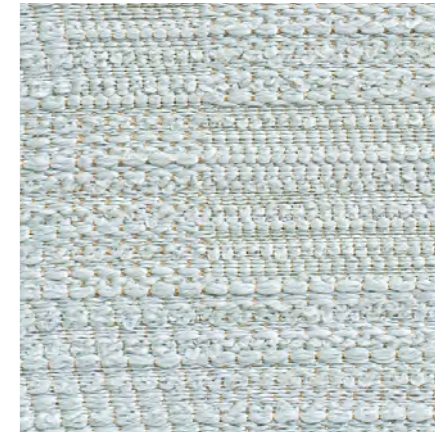
TESTA DI MORO



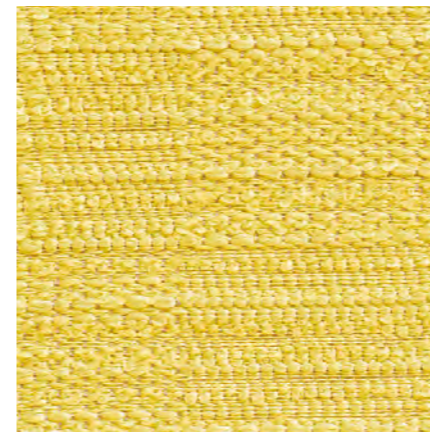
BLACK



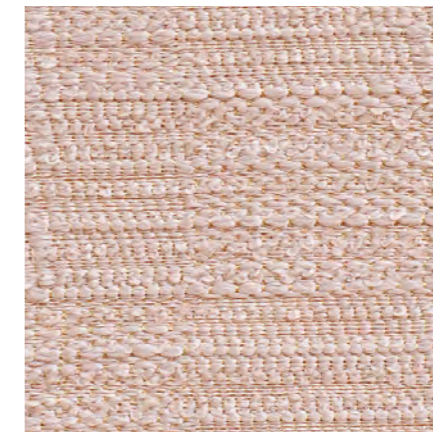
MARINE



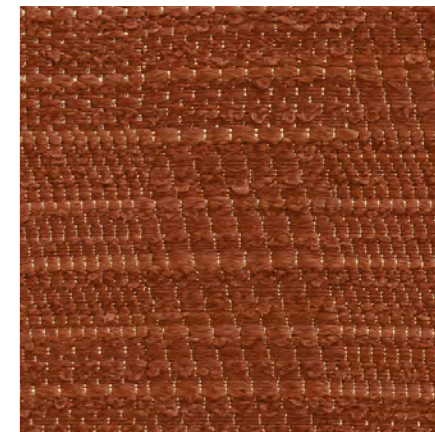
AZUR



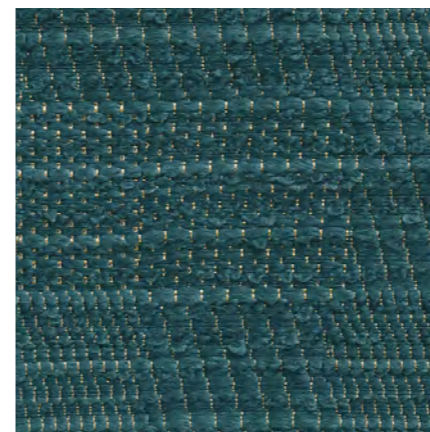
TITTI



ROSE



CHATAIGNE



PAVONE

A jacquard fabric with a fine metallic warp and 3 weft threads of varying thicknesses to create a sumptuous textural effect with the typical characteristics, thickness and overstretching of haute couture fabrics. A versatile fabric for use as curtains and seating intended for intensive use.

CAT. : B
Composition: 60% Polyester FR Trevira, 40% Polyester FR
Martindale: 50.000
Treatment: Flame retardant



*PLEASE NOTE: The colors represented may not correspond to the actual color of the material. For a perfect match please contact our customer service to request a sample.

NIMBUS

DEDAR

MILANO



TESTA DI MORO



TOPO



TORTORA



NUDE



BREBIS



NUVOLA



LODEN



ARDESIA

This warm and resistant wool bouclé is full of spontaneity and softness. The delicate colour palette, including natural tones and darker shades, enhances the intrinsic nature of wool.

CAT. : C

Composition: 70% Wool, 15% Cotton,
10% Polyamide, 5% Polyester

Martindale: >40.000



*PLEASE NOTE: The colors represented may not correspond to the actual color of the material. For a perfect match please contact our customer service to request a sample.

PLUSHY

DEDAR

MILANO



Extremely wear resistant, this fire-retardant and washable velvet has a distinctive crushed-pile effect and a pleasingly soft hand.

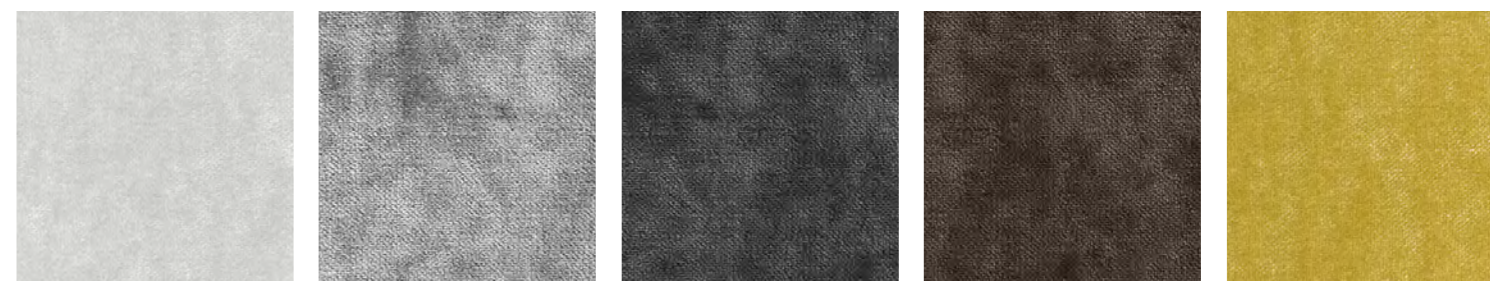
CAT. : C
Composition: 100% Polyester FR
Martindale: 100.000
Treatment: Flame retardant



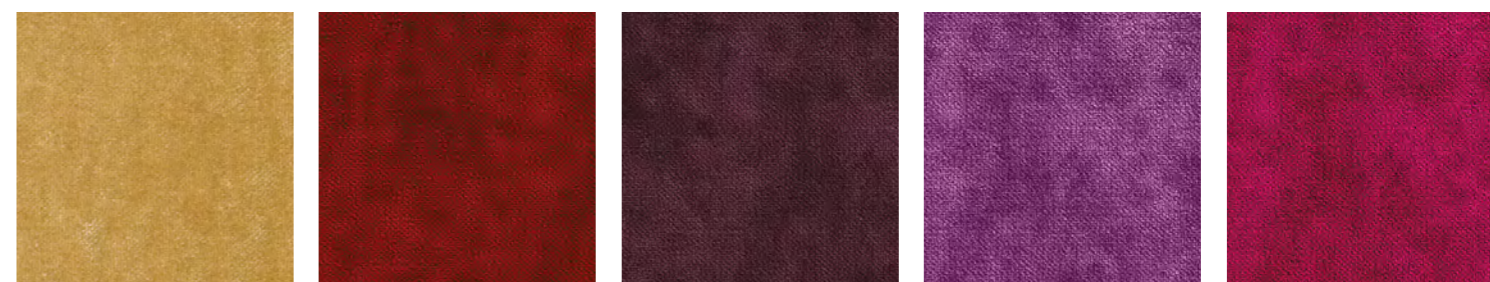
NERO SABBIA BRUMA OMBRA NEVE



COGNAC PRUGNA AUBERGINE CIELO LICHENE



ARGENTO SOURIS ARDESIA TESTA DI MORO CITRINE



AMBRE DIVA GRIOTTE CARDINALE SHOKING



ENCRE BLEU DE PRUSSE PETROLE OLIVE ABSINTHE

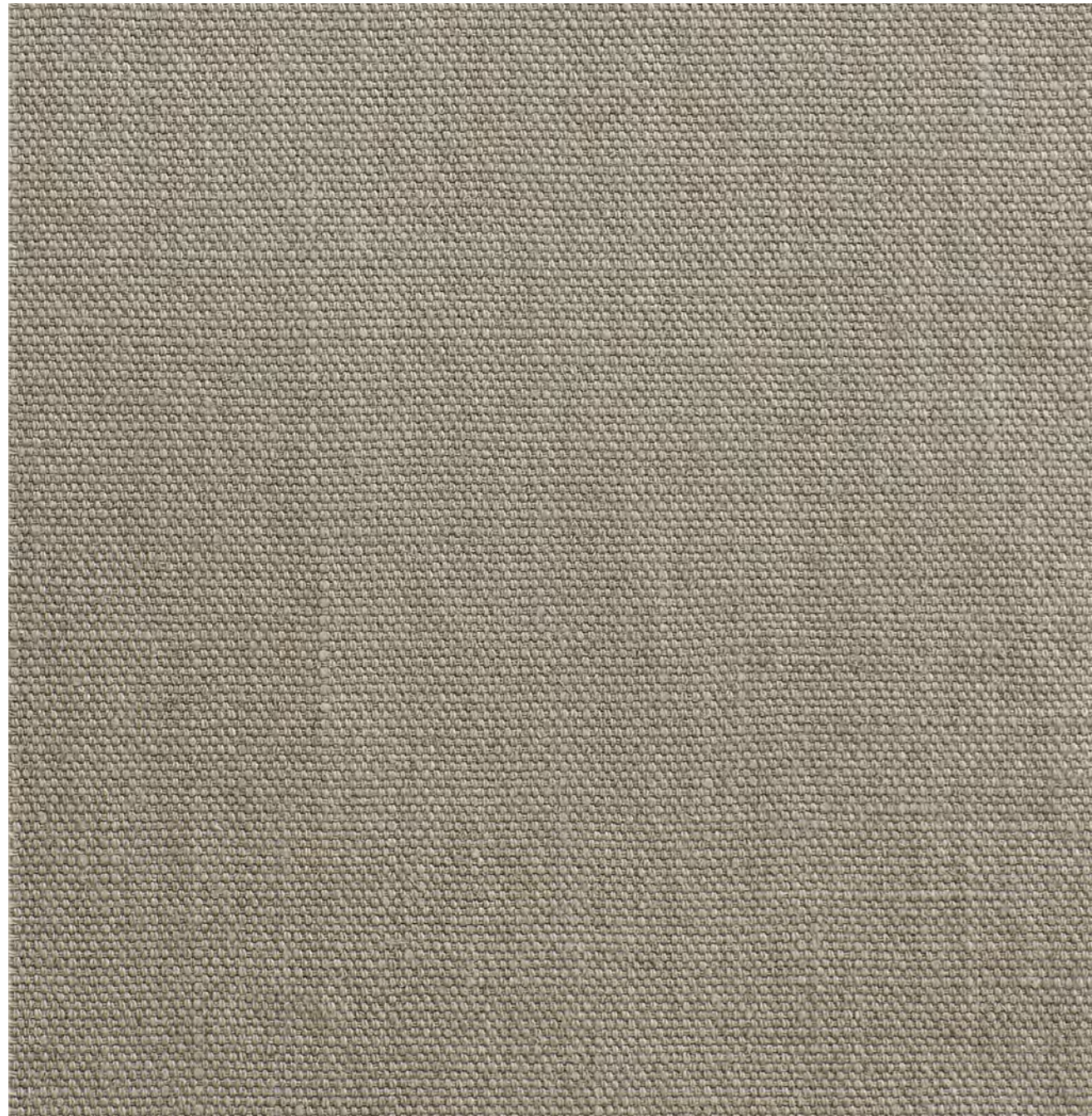


CELADON PERSIA LINO

*PLEASE NOTE: The colors represented may not correspond to the actual color of the material. For a perfect match please contact our customer service to request a sample.

TEMPERA

DEDAR MILANO



A bulky panama weave (1kg/lm) with washed effect, woven in pure long-fibre linen sourced in Europe. Italian weaving expertise and an accurate hand-crafted dyeing process have produced vibrant variations combined with depth of colour. Tempera evokes the charm of a vintage garment to which the passing of time has imparted character, while maintaining its original quality and beauty intact. Hardwearing and versatile, Tempera is suited for seating applications and lends itself also to curtains.

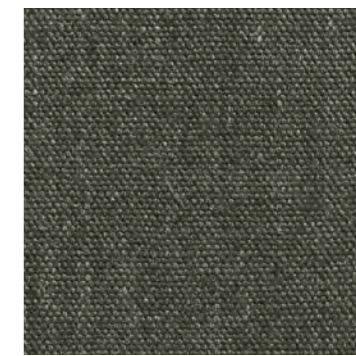
CAT. : C
Composition: 100% Linen
Martindale: 28.000



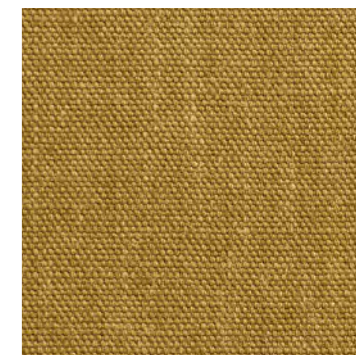
PERLA



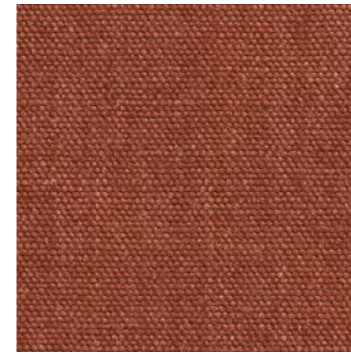
ARDESIA



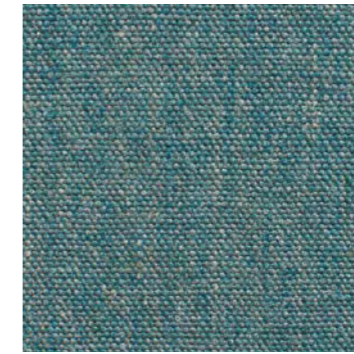
OLIVA



SENAPE



ROUSSILLON



OTTANIO



DENIM



INDIGO



LAURIER



BOSCO



TABACCO



NATURALE



LINO



NUDE



CANYON



AUBERGINE



MIRTILLO

THELONIOUS

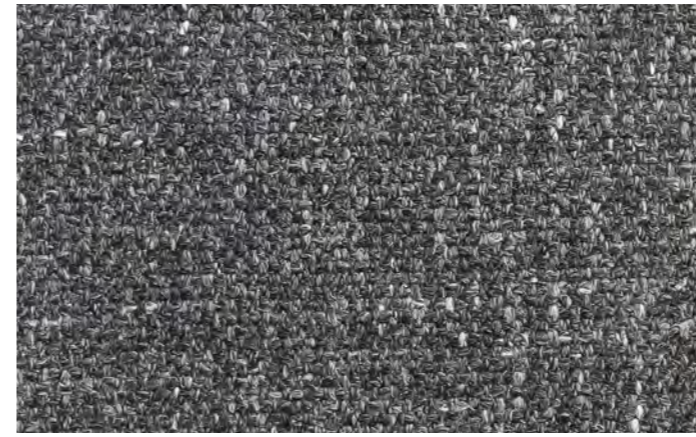
DEDAR

MILANO

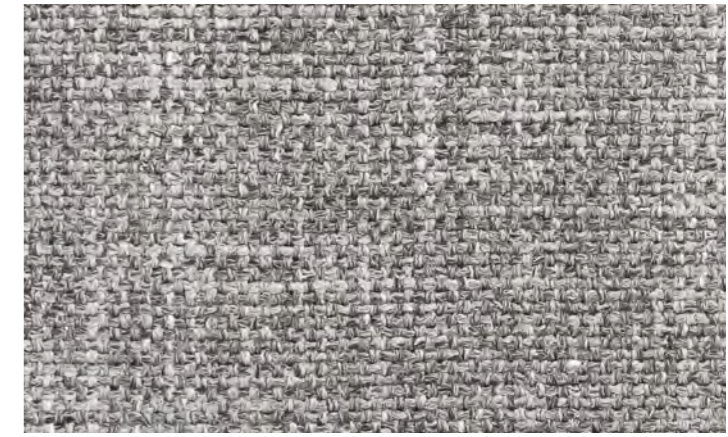


A rich linen canvas made from a composite yarn, in which the differently coloured fibre blend gives it a unique mélange effect. Thelonious has all the distinctive irregularities of natural fibres, combined with an excellent resistance to abrasion.

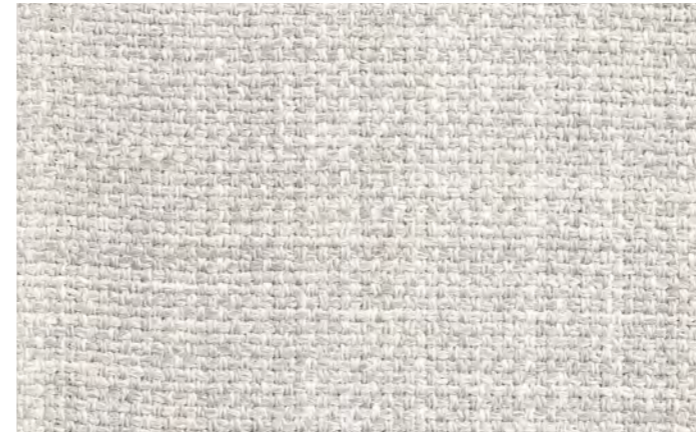
CAT. : D
Composition: 35% Polyester, 34% Linen, 20% Cotton,
7% Polyester, 4% Polyacrylic
Martindale: >40.000



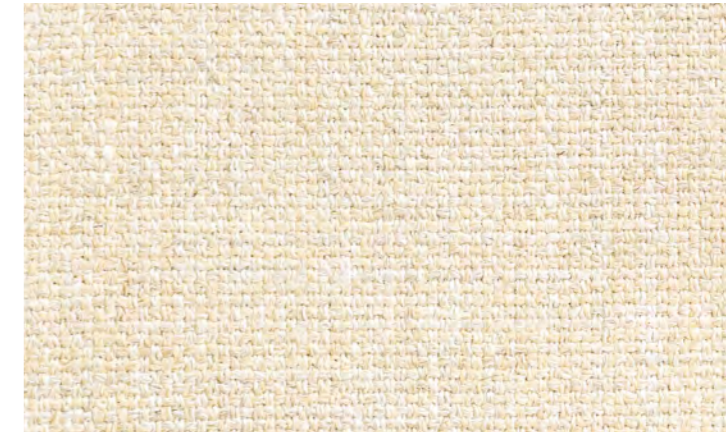
ARDESIA



CENERE



PERLA



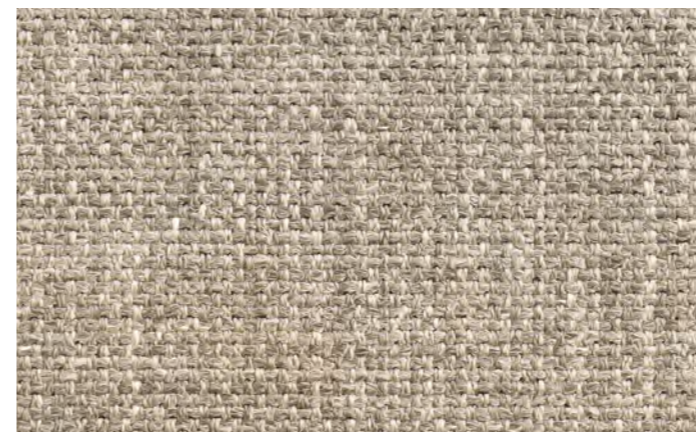
AVORIO



NATURALE



CAMMEO



GIUNCO



CALCARE



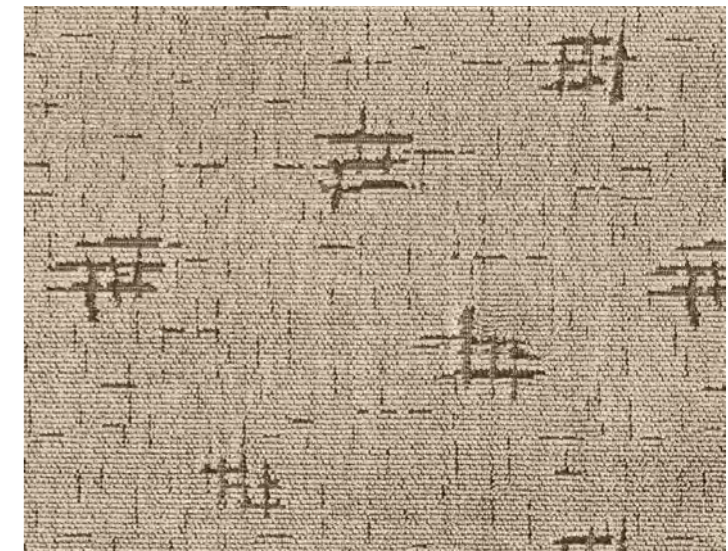
*PLEASE NOTE: The colors represented may not correspond to the actual color of the material. For a perfect match please contact our customer service to request a sample.

RATTOPPATO

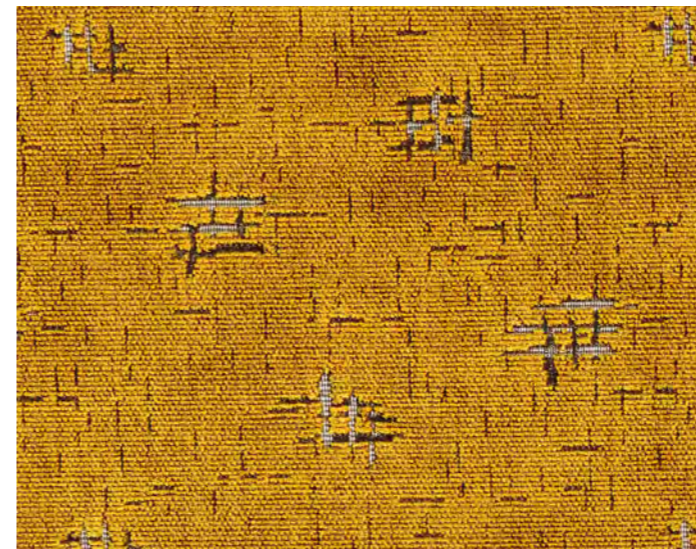
RUBELLI



SABBIA



VISIONE



BRONZO



ARDESIA

Textured velvet, with viscose pile. Reproduction of the original fabric designed by Gio Ponti and hand woven by Rubelli in 1934 for the Biennale of decorative art. A reinterpretation of the centuries-old velvet weaving technique. Suitable for light use.

CAT. : A

Composition: 50% Cotton, 50% Viscose

Usage: Light Use

Pattern Repeat: width 17cm - height 14,5cm



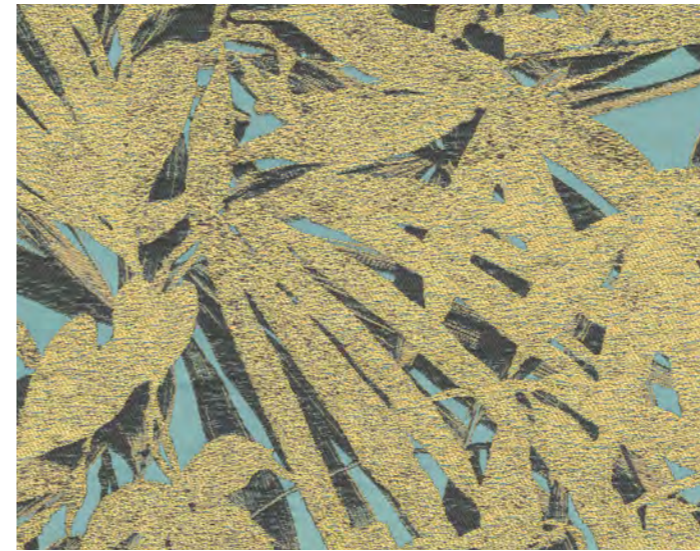
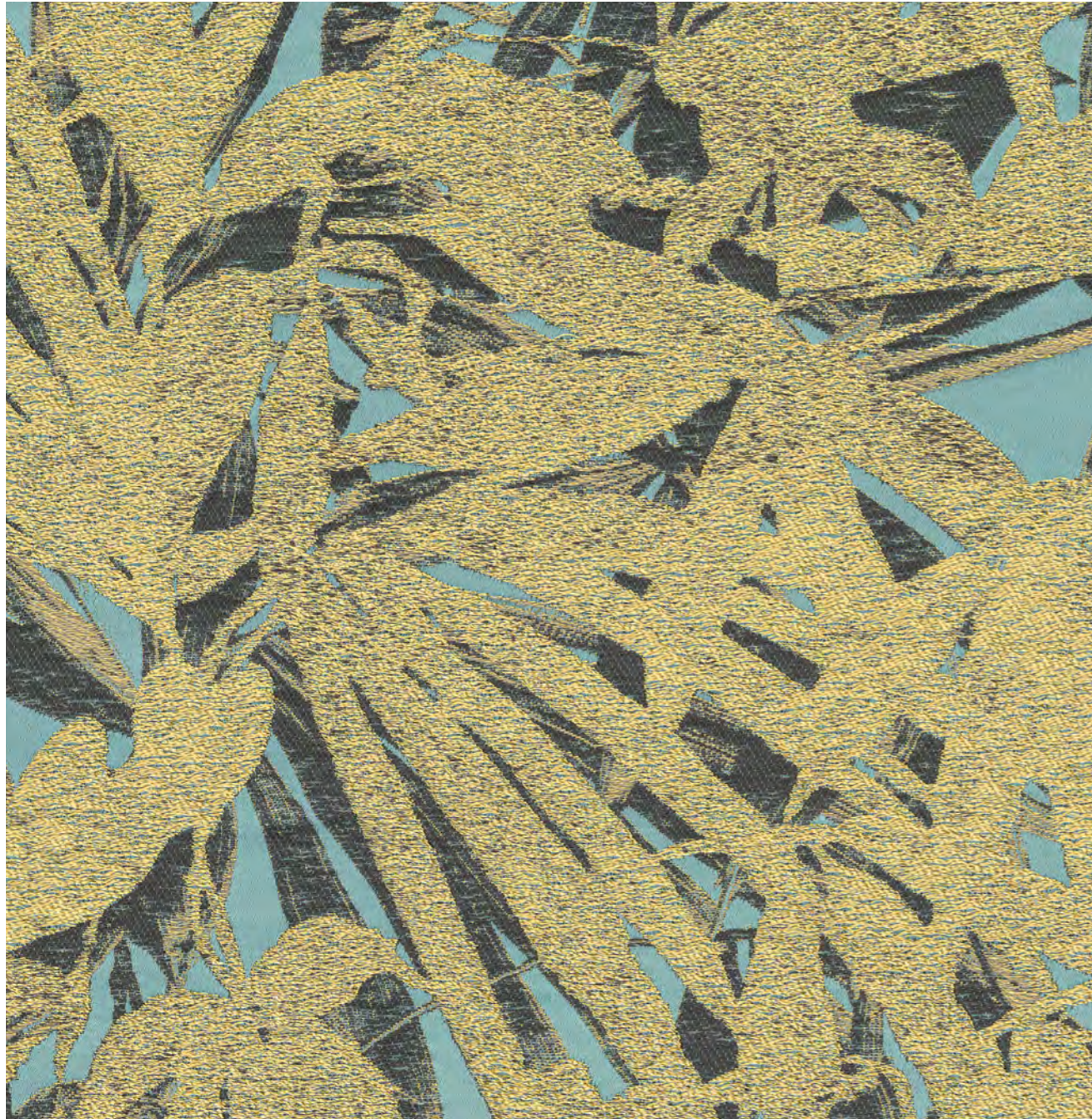
RUBINO



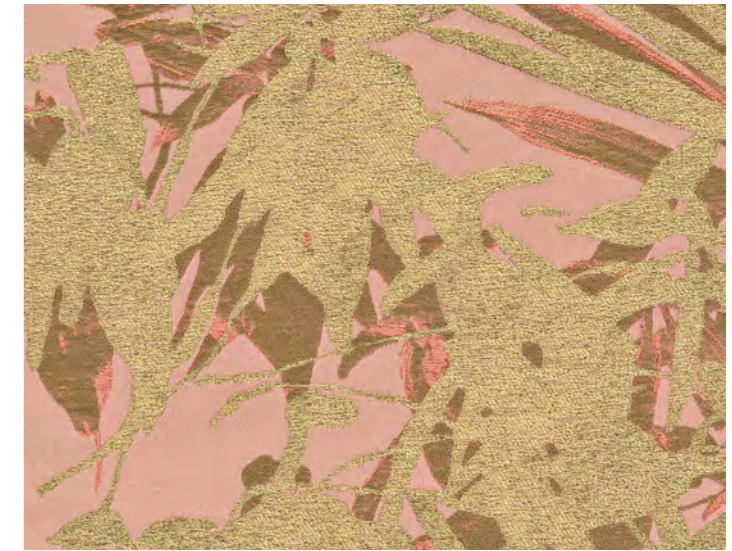
*PLEASE NOTE: The colors represented may not correspond to the actual color of the material. For a perfect match please contact our customer service to request a sample.

JAVA

RUBELLI



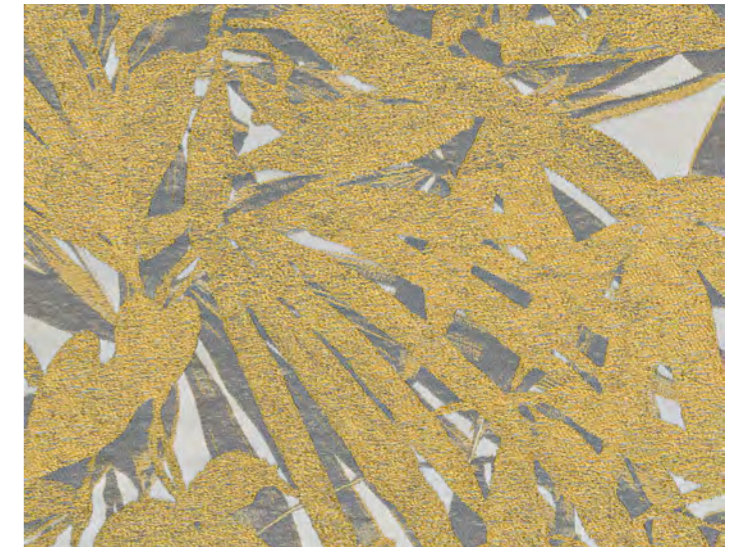
ACQUA



ROSA



NERO



ARGENTO

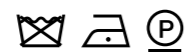
A play on light and shade, on the overlapping of shiny and matte silhouettes reminiscent of Japanese lacquer. Plant elements with graceful shapes, possibly Kentia palms, stand out luminous in the foreground. Suitable for light use.

CAT. : C

Composition: 28% ECO-Polyamide,
25% ECOViscose, 25% Acrylic,
ECO-Viscose

Usage: Light Use

Pattern Repeat: width 67,5cm - height 97cm

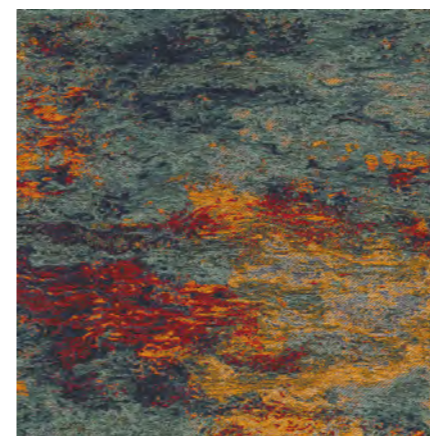


AVORIO

*PLEASE NOTE: The colors represented may not correspond to the actual color of the material. For a perfect match please contact our customer service to request a sample.

SECOND FIRING

RUBELLI



DALPAYRAT GLAZE



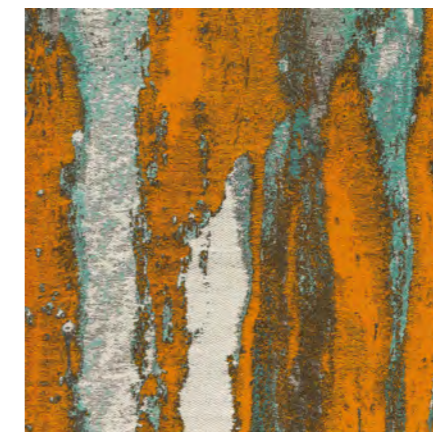
RIFLESSI DI LUCE



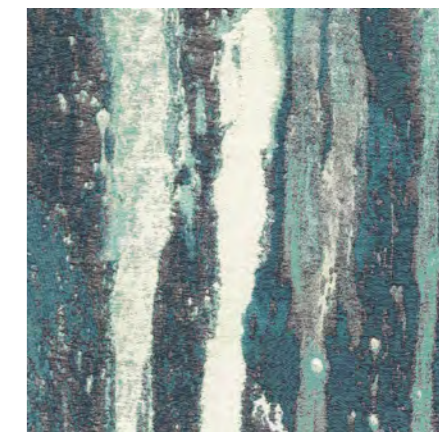
RIFLESSI SCURI



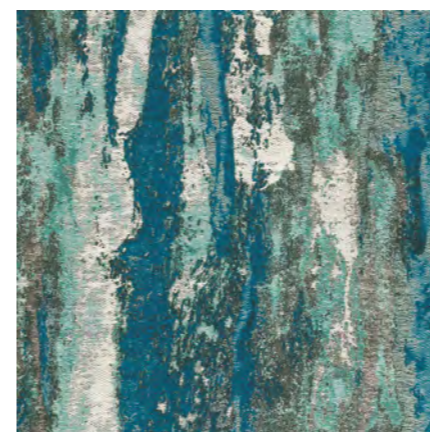
APOTEOSI DI VENEZIA



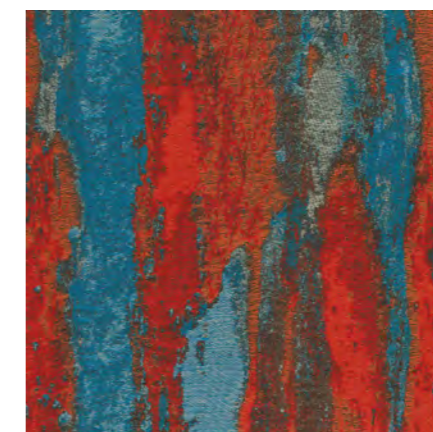
BLUE TIGER



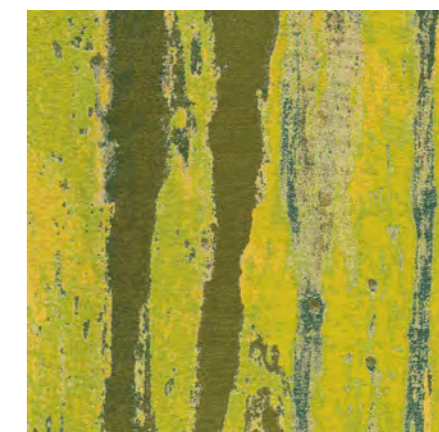
ACQUA LUMINOSA



ACQUA PROFONDA



DALPAYRAT BLUE



GREEN TIGER



DALPAYRAT GREEN

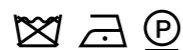
A jacquard fabric of great visual impact which belongs to "Second Firing", a capsule collection designed by Peter Marino. While the patterns and texture come from Dalpayrat ceramics, many of the colours are just the same as in the paintings of Paolo Veronese, a Venetian painter much loved by Peter Marino. Suitable for decoration and upholstery, it is made from eco-nylon in the warp and cotton in the weft. To highlight the shiny effect of the ceramic glazes, metallic weaves have also been added.

CAT. : A

Composition: Cotton, Eco-Polyamide,
Viscose, Polyimide

Usage: Normal Use

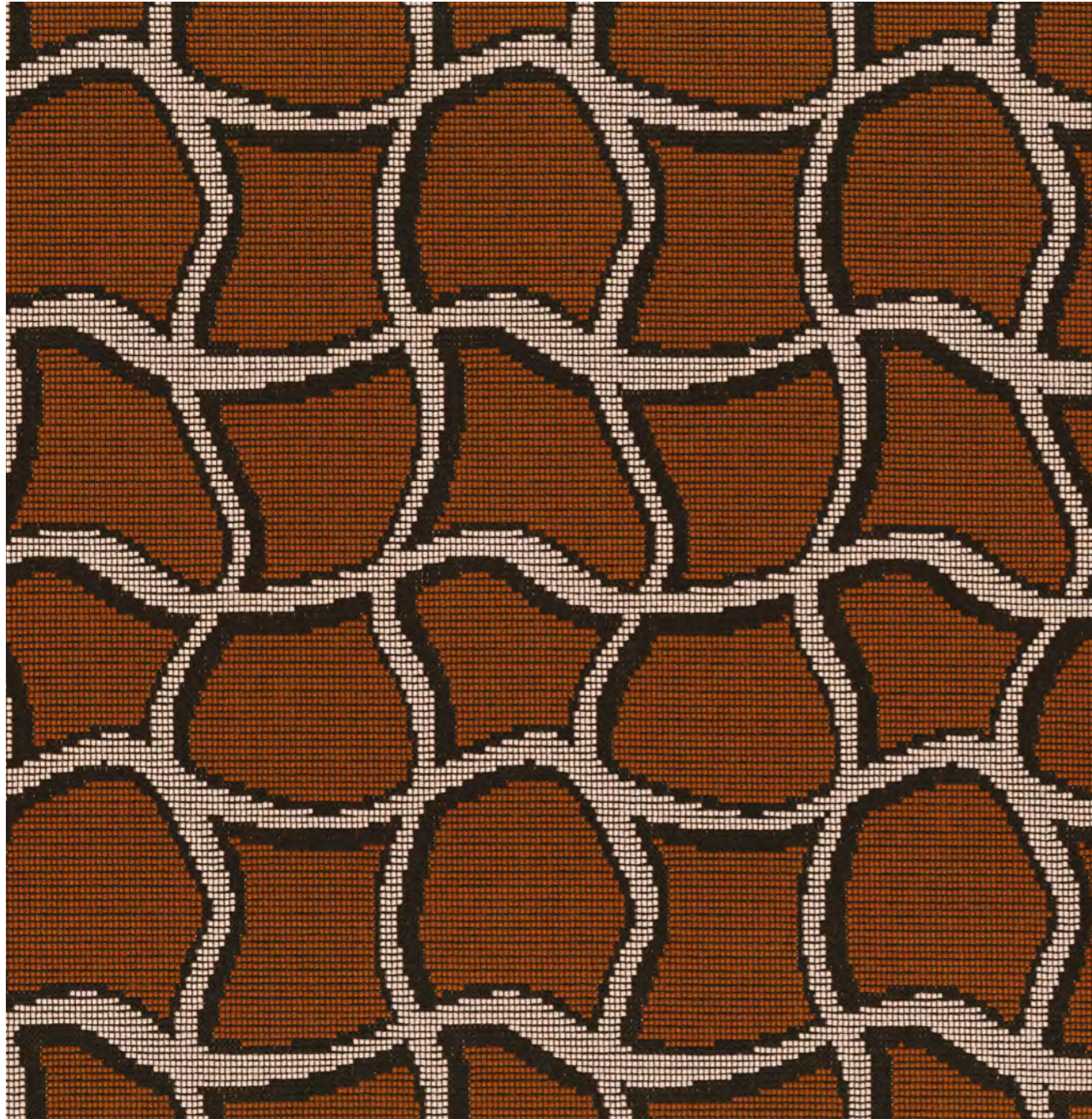
Pattern Repeat: width 140cm - height 97cm



*PLEASE NOTE: The colors represented may not correspond to the actual color of the material. For a perfect match please contact our customer service to request a sample.

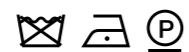
WOBBLE GRID

RUBELLI

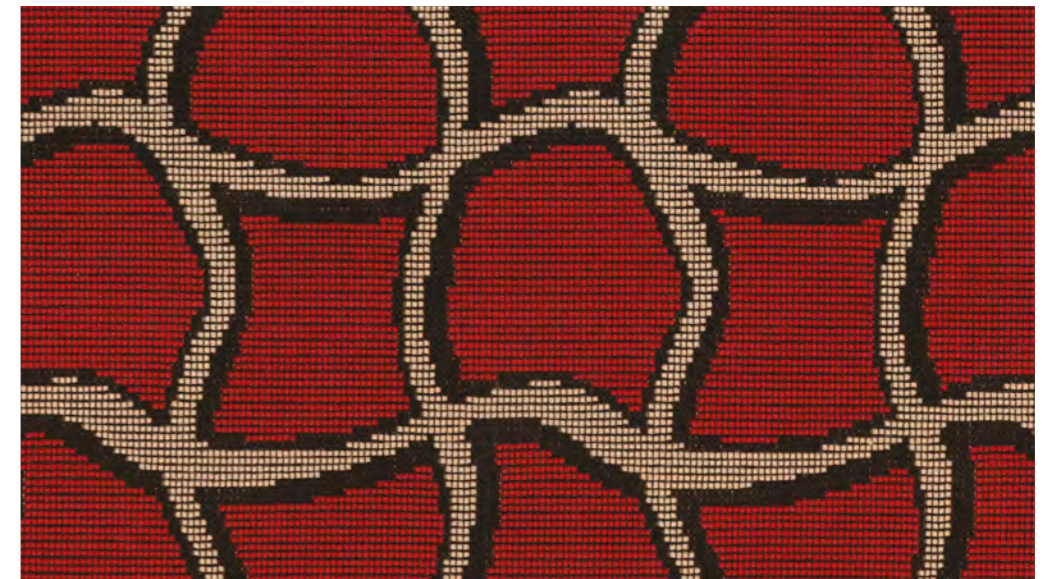


A reimagined check: less formal, more free-flowing and fun. Whilst I love old chintzes and faded stripes, I also love a geometric pattern, particularly bold ones such as this, which to me feels rather 1970s. A special jacquard technique that simulates the effect of épinglé velvets and which produces a very resistant yet at the same time draping fabric.

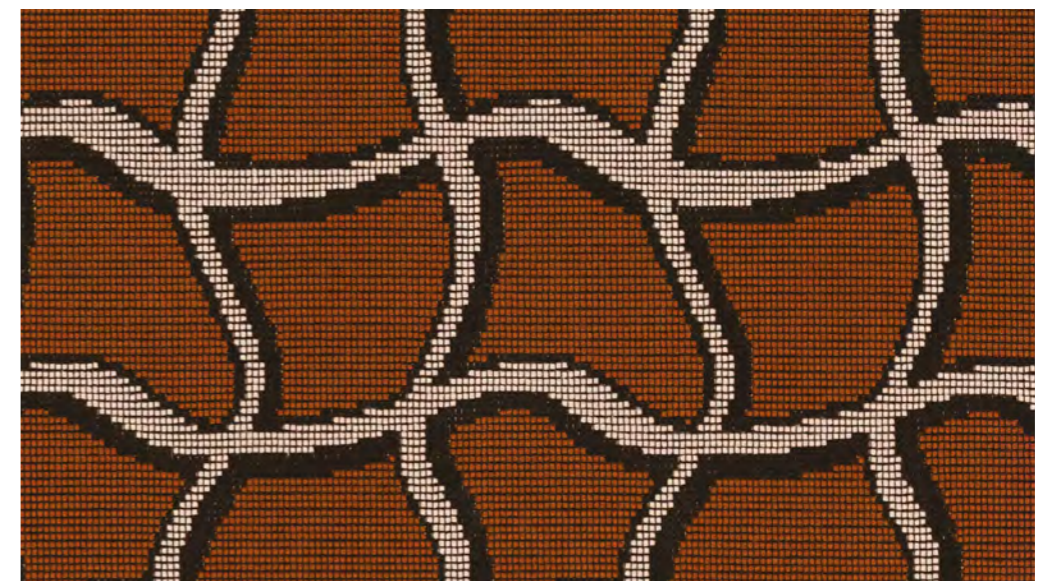
CAT. : C
Composition: 92% Viscose, 8% Polyamide
Martindale: 55.000
Pattern Repeat: width 10cm - height 17cm



EMERALD



RED



BROWN

*PLEASE NOTE: The colors represented may not correspond to the actual color of the material. For a perfect match please contact our customer service to request a sample.

DERBY TOILE

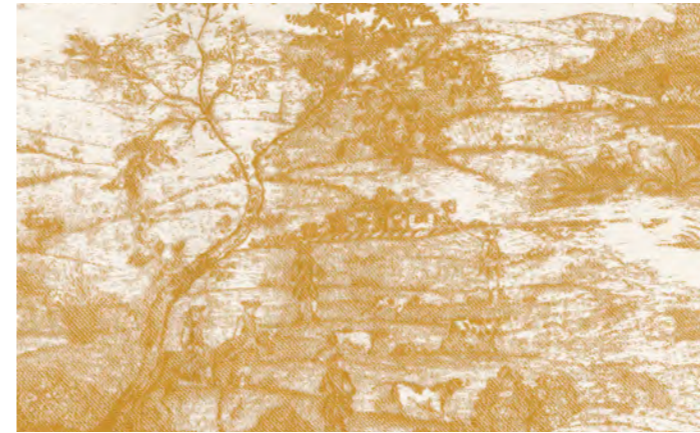
RUBELLI



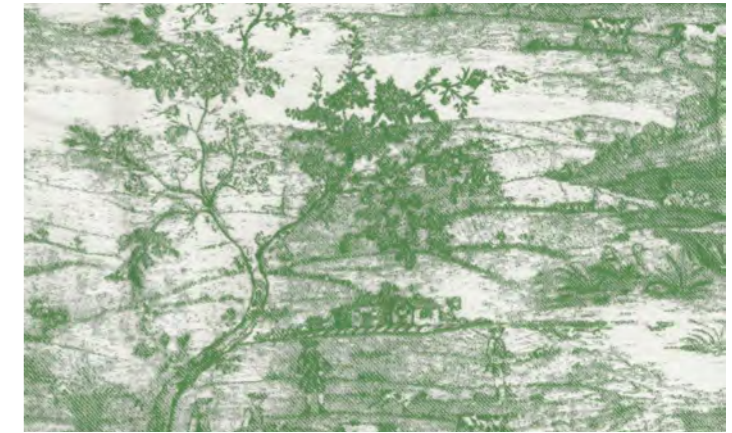
AVORIO



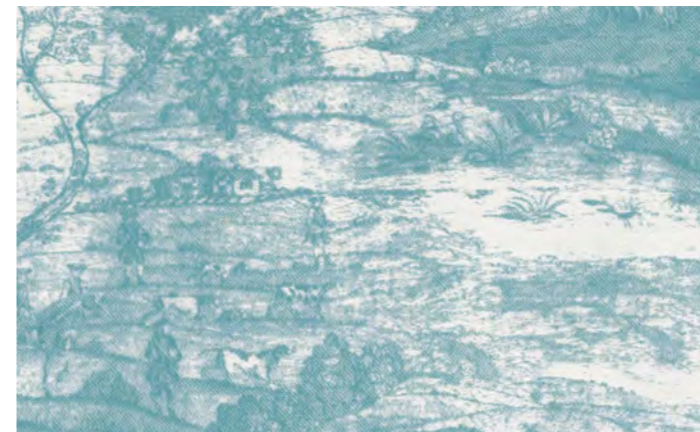
TALPA



ORO



VERDE



ACQUA



BLU



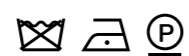
ROSA



ROSSO

The starting point for this jacquard is a toile de Jouy, since ever the detailed pattern par excellence. The 8 versions of a highly detailed bucolic hill landscape evoke different seasons, different times of day, different states of mind. Suitable for decoration and upholstery.

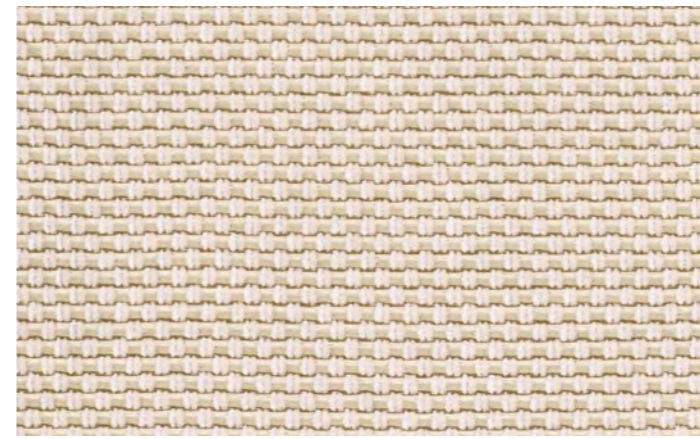
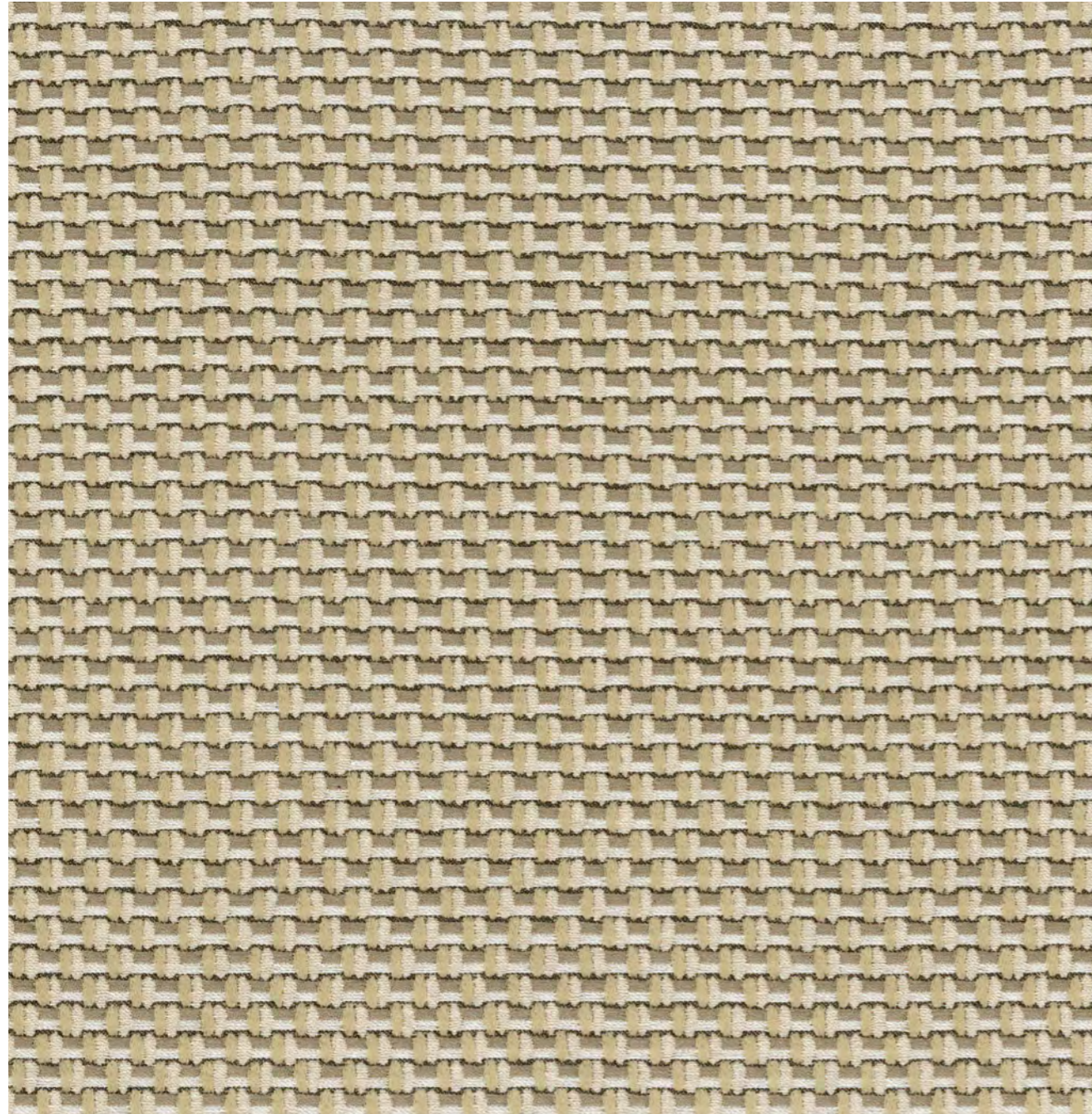
CAT. : C
Composition: 69% Cotton, 31% Eco-Polyamide
Martindale: 25.000
Pattern Repeat: width 67,5cm - height 32cm



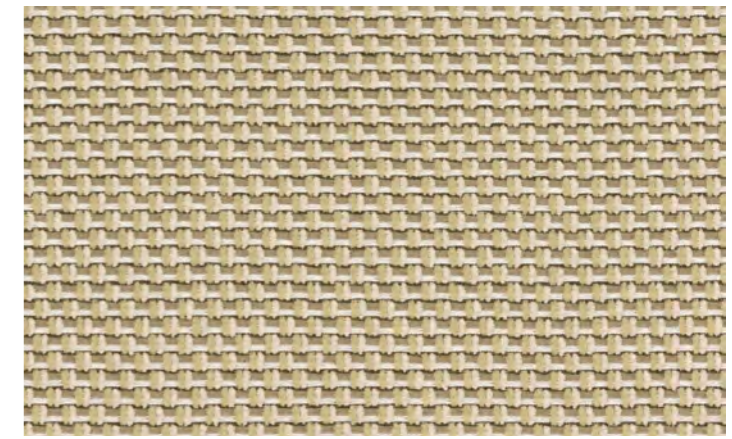
*PLEASE NOTE: The colors represented may not correspond to the actual color of the material. For a perfect match please contact our customer service to request a sample.

NEXUS

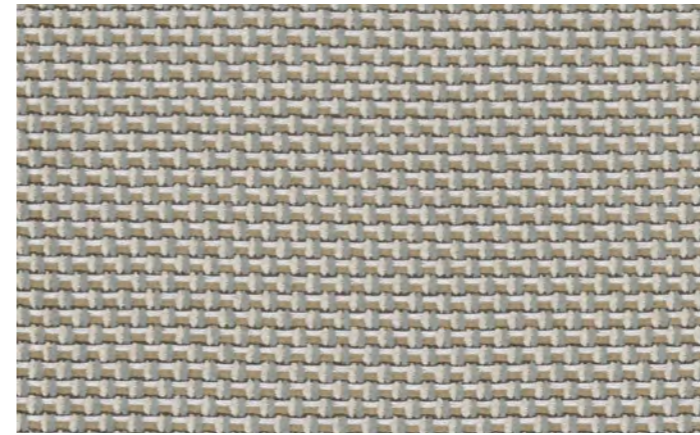
RUBELLI



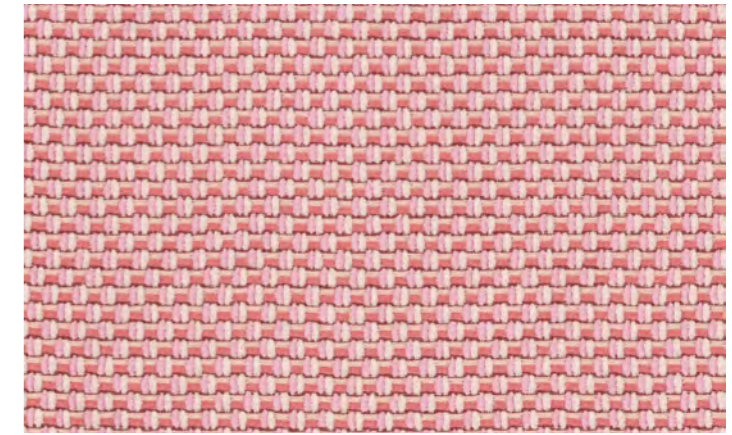
AVORIO



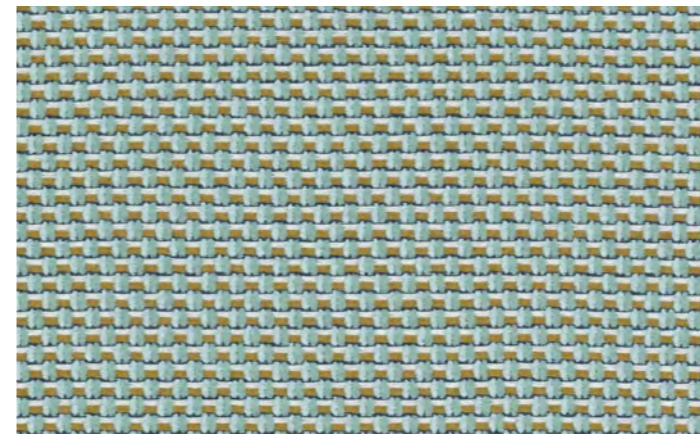
PAGLIA



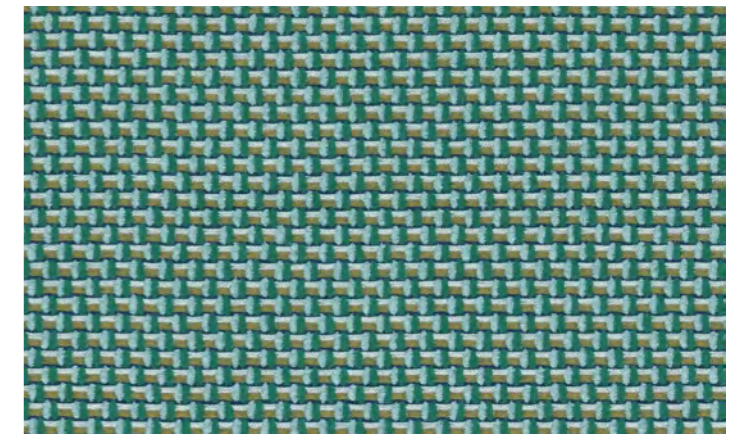
ARGENTO



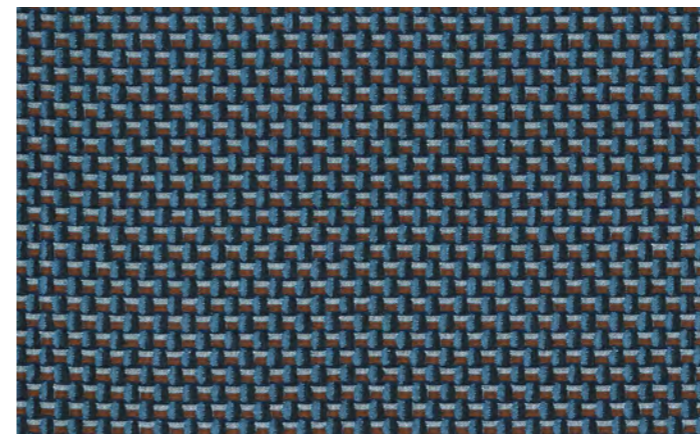
PESCO



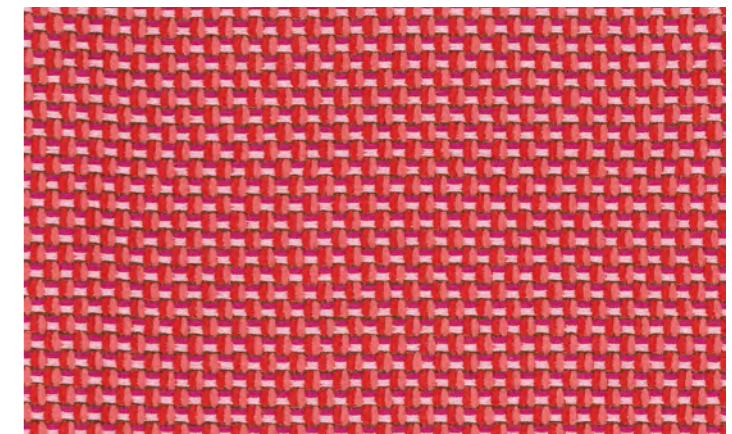
ACQUA



LAGUNA



BLU



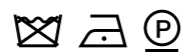
CORALLO

The pattern of the matelassé Nexus imitates a texture of thick threads in three colours. It has a warp in evo nylon, while one of the wefts is made by recovering waste (the yarns obtained from false selvages) from the Rubelli mill: an example of recycling. Suitable for upholstery.

CAT. : C

Composition: 42% Viscose, 22% Cotton RG,
21% Eco-Polyamide, 10% Polyester

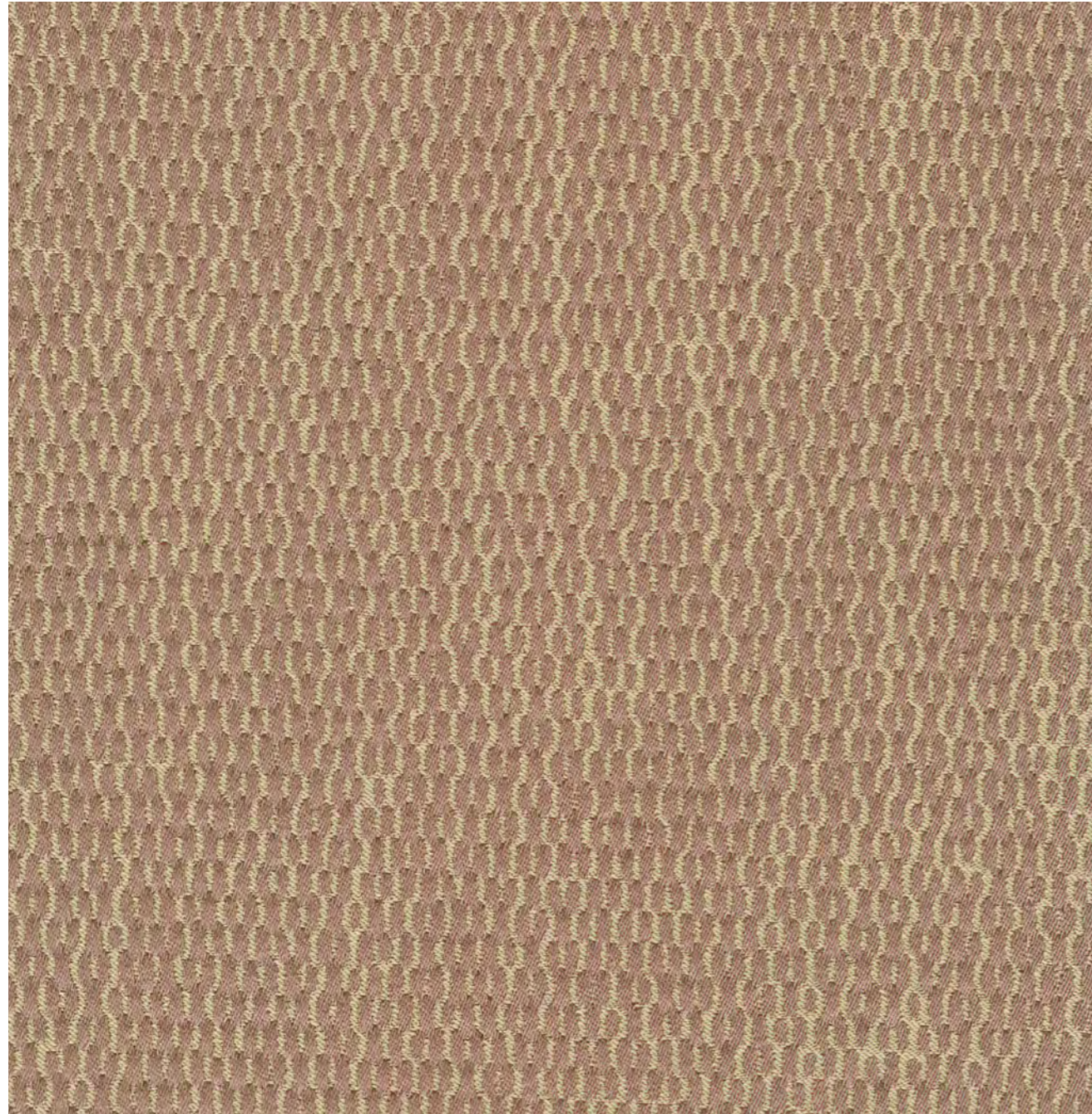
Martindale: 35.000



*PLEASE NOTE: The colors represented may not correspond to the actual color of the material. For a perfect match please contact our customer service to request a sample.

FILIGRANA

RUBELLI

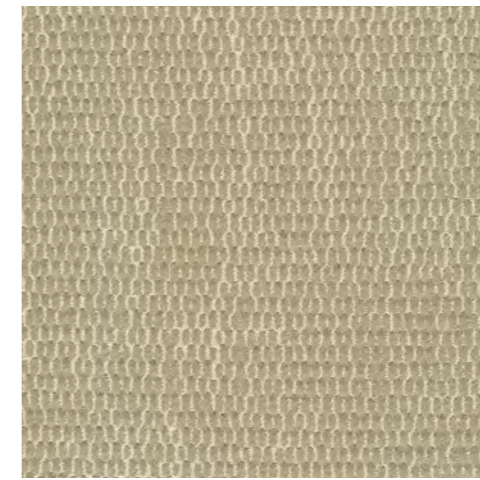


Faux uni double face, flame retardant in Trevira CS.
A fabric with a micro pattern, which is significant to the lattice working of metals.
Suitable for upholstery.

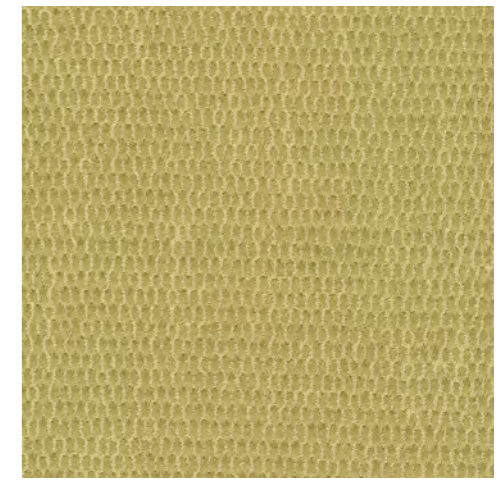
CAT. : D
Composition: 100% Polyester Trevira CS
Martindale: 25000
Pattern Repeat: width 67,5cm - height 72cm
Treatment: Flame retardant



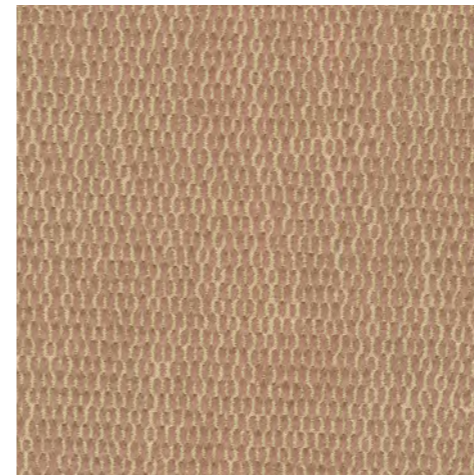
AVORIO



CORDA



TIGLIO



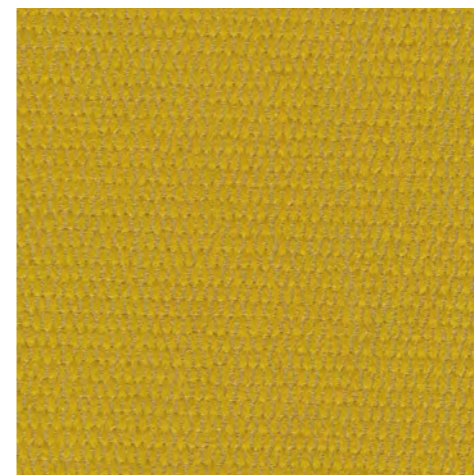
PESCO



TABACCO



MORO



ORO



TIBET



PAVONE

SING

RUBELLI



AVORIO



CORDA



ARGENTO



ARGILLA



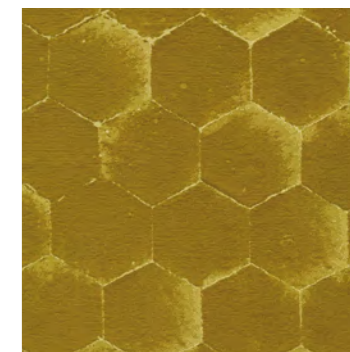
SABBIA



TIGLIO



EBANO



ORO



OSSIDO



MANGO



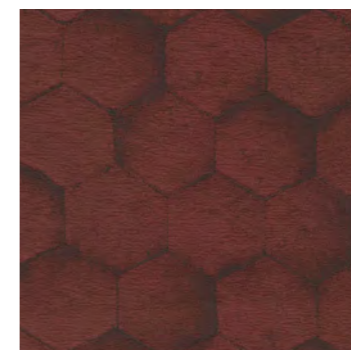
ARANCIO



COTTO



ROSSO



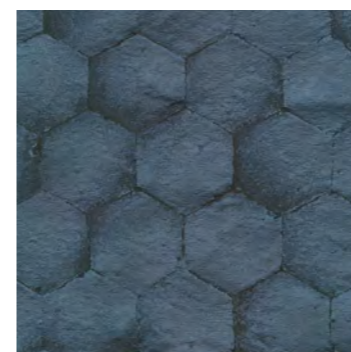
TIBET



LEGNO DI ROSA



PELTRO



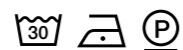
IRIS



LAGO

Featuring an elegant geometric pattern, it shows a decoration which is the textile reinterpretation of the ceramic ornamentation of the mausoleum of Cem Sultan in Bursa, dating back to the end of the fifteenth century. Suitable for upholstery.

CAT. : D
Composition: 56% Polyester, 44% Polyamide
Martindale: 45000
Pattern Repeat: width 33,8cm - height 29cm



*PLEASE NOTE: The colors represented may not correspond to the actual color of the material. For a perfect match please contact our customer service to request a sample.

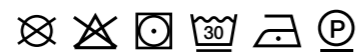
TALENT

GIOPAGANI



Talent, which has a casual, sporty tweed look, can be obtained in a comprehensive range of colours produced with modern natural dyes. It is also very hard-wearing and easy to clean, to withstand the bustle of family life - traces of chocolatey hands or spilt red wine are easily dealt with.

CAT. : E
Composition: 100% Polyester
Martindale: 100000



194 556 585 587 595



596 665 694 756 784



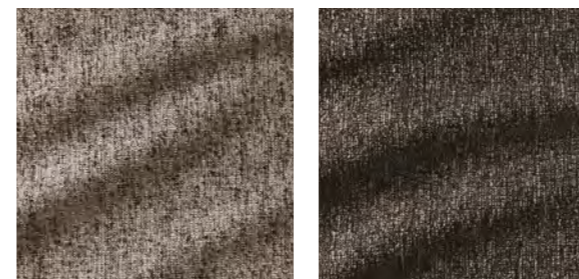
811 814 886 887 891



893 895 896 956 958



981 992 993 994 995



997 998

*PLEASE NOTE: The colors represented may not correspond to the actual color of the material. For a perfect match please contact our customer service to request a sample.

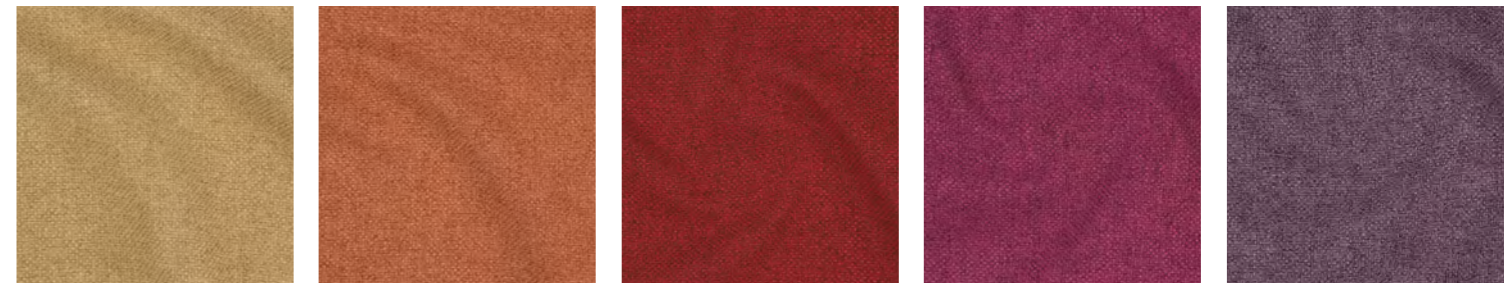
POP

GIOPAGANI



POP is part of our series of durable, easy-to-clean upholstery fabrics. Its special finishing gives it all the properties a simple upholstery fabric needs to have. The thick panama fabric is created using a light melange material in warp and weft and is available in a wide range of fresh, vibrant colours.

CAT. : E
Composition: 85% Polyester, 15% Cotton
Martindale: 100000



114 226 337 446 447



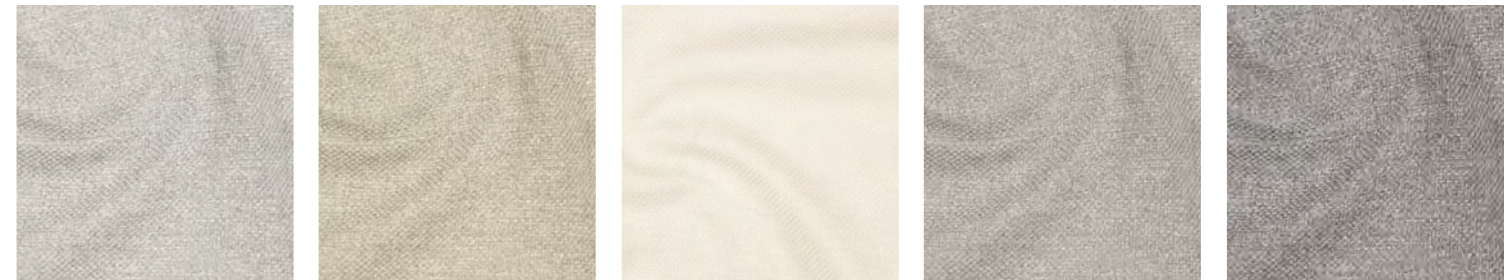
448 557 558 666 668



715 767 776 777 800



812 881 883 887 892



962 973 980 993 995



998 999

*PLEASE NOTE: The colors represented may not correspond to the actual color of the material. For a perfect match please contact our customer service to request a sample.

ORION

GIO PAGANI



A tactile ribbed effect gives this durable, velvet its appealing appearance and texture, while a subtle sheen creates an inviting depth of colour. A stain repellent finish makes Orion the ultimate practical textured velvet.

CAT. : E
Composition: 100% Polyestere
Martindale: 100000
Treatment: Stain repellent



JASMINE WHITE	PORCINI	ALUMINIUM	SKYLIGHT	OFF WHITE	PANNACOTTA	TAUPE
ALABASTER	LINEN	FOSSIL	ASH	FLAX	DOVE	SEA MIST
PUTTY	HAVANA	OLIVE	TOBACCO	SILVER GREY	SWEDISH GREY	STEEL
HEMP	SHITAKE	VELVET PINE CONE	GRAPHITE	EBONY	GRIS	HELEPANT
SLATE	CINDER	PEAT	NETTLE	FOREST	EVERGREEN	JADE
COAST	MINERAL	BALSAM	LAGOON	TEAL	PETROL	DRAGONFLY
BLUEBERRY	INDIGO	NUIT	INK	INDIAN INK	STORM CLOUD	ESPRESSO
BLOSSOM	VINTAGE ROSE	BRICK	PAPRIKA	BURNT ORANGE	FLAME	RUBY
PLUM						

*PLEASE NOTE: The colors represented may not correspond to the actual color of the material. For a perfect match please contact our customer service to request a sample.

SHINING LEATHER

GIOPAGANI



Calf aniline leather lightly buffed on surface, finished with a natural pigmented protective coating. A polishing surface treatment lend the skin its unmistakable shiny look. A bold fashionable uncompromised statement.

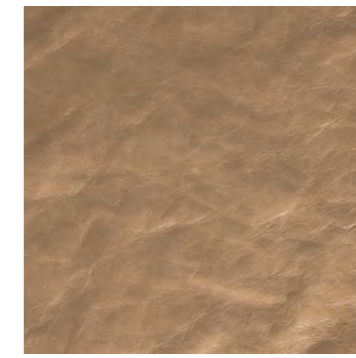
CAT. : C
Leather type: Calf
Origin: Australia
Thickness: 0,9 mm
Dyeing: Pass-through aniline
Tanning: Chrome
Surface structure: Buffet grain
Treatments: Vegetal protective coating, Water-repellent



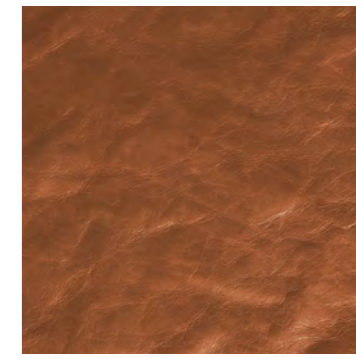
BIANCO



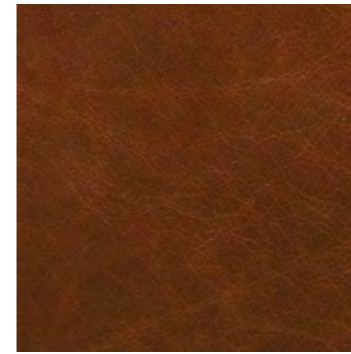
TALCO



TORRONE



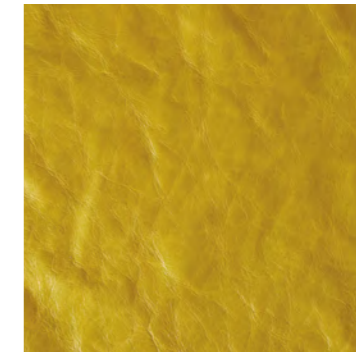
WHISKEY



CASTAGNA



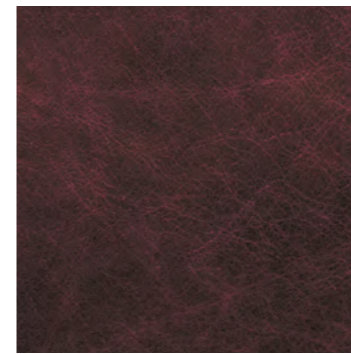
MOKA



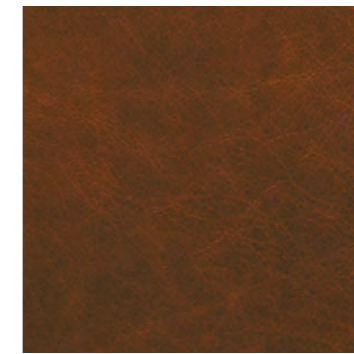
SOLE



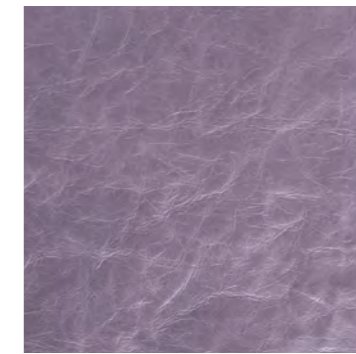
FIAMMA



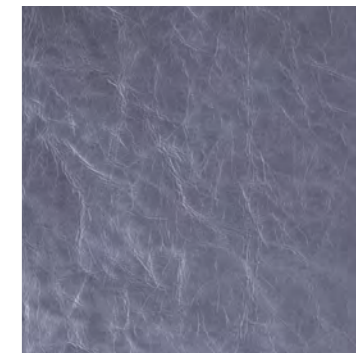
RUBINO



MATTONE



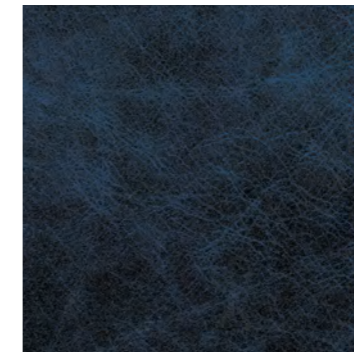
GLICINE



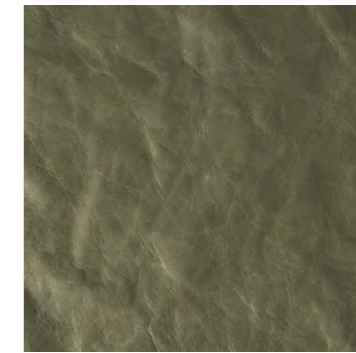
SKY



CELESTE



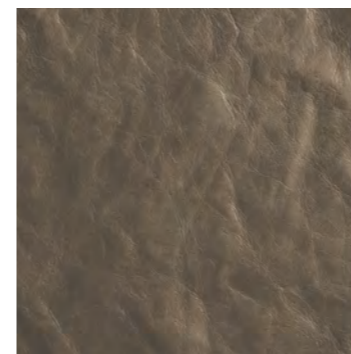
NAVY



SALVIA



KIWI



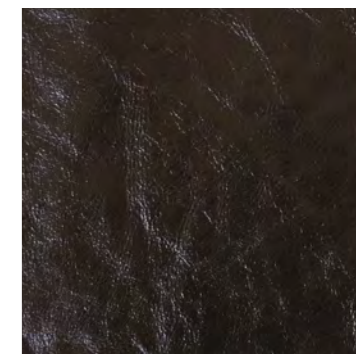
TAUPE



ELEFANTE



FUMO

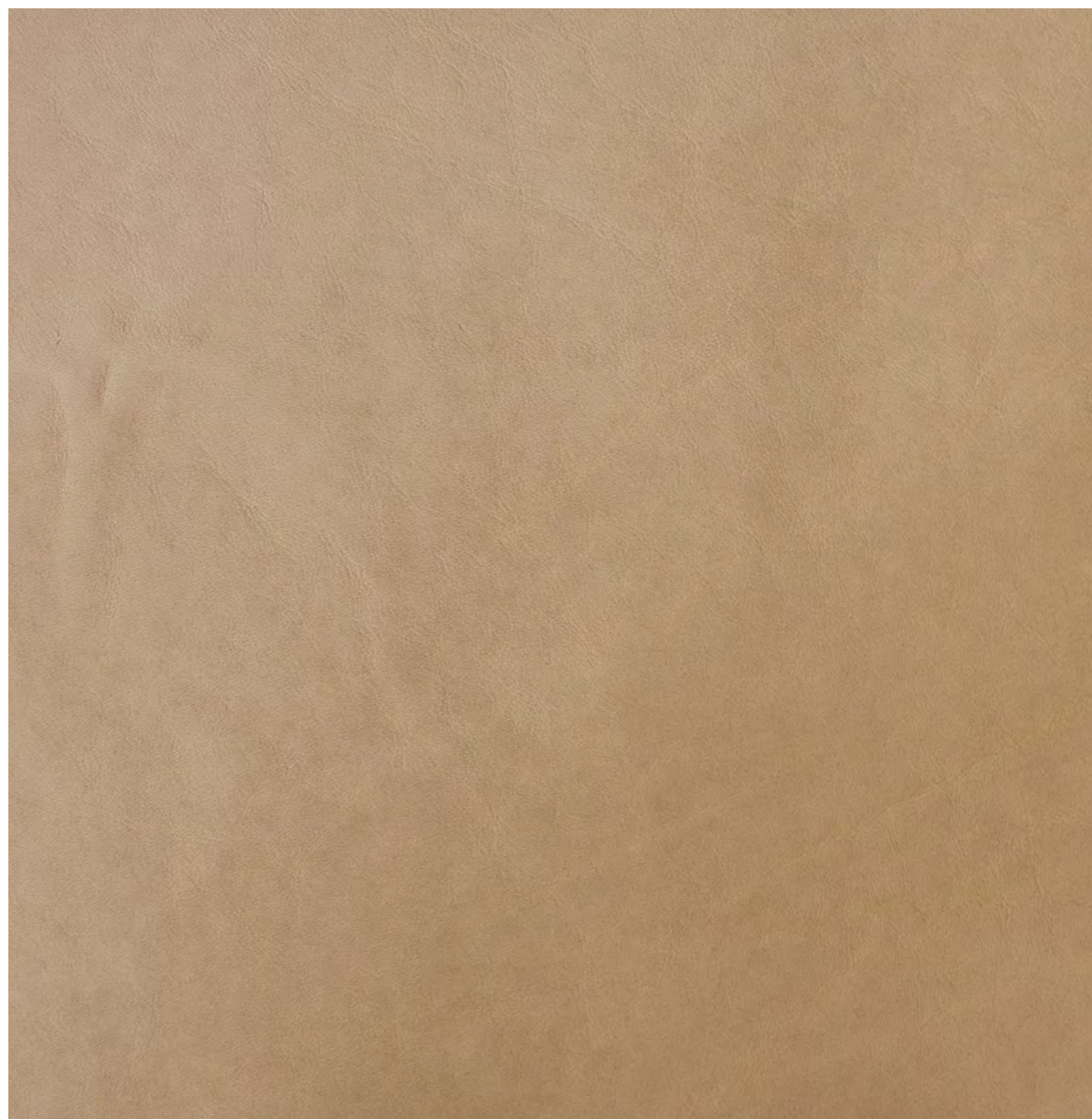


NERO

*PLEASE NOTE: The colors represented may not correspond to the actual color of the material. For a perfect match please contact our customer service to request a sample.

TIMELESS LEATHER

GIOPAGANI

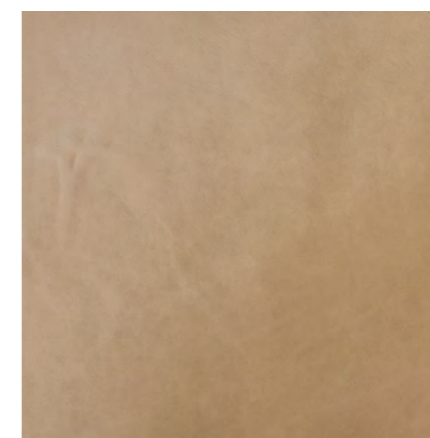


Cattle hides of European origin, chrome tanned, vacuum dried, finished with aniline, manually rubbed down to give a stone washed effect and a soft touch. Its lightly worn yet refined look is able to encode every product in different styles to interpret and lead the trends.

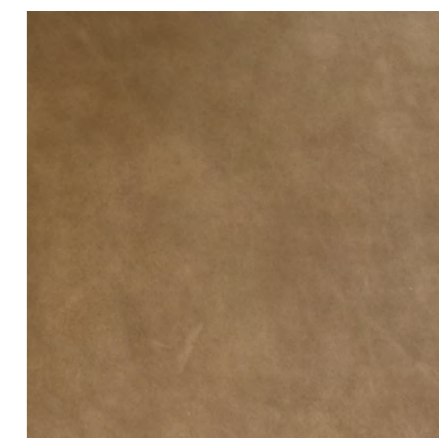
CAT. : B
Leather type: Cattle
Origin: Europe
Thickness: 1,4 / 1,6 mm
Dyeing: Pass-through aniline
Tanning: Chrome
Surface structure: Buffed grain



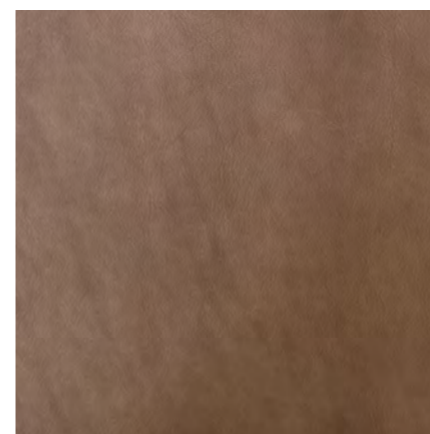
AVORIO



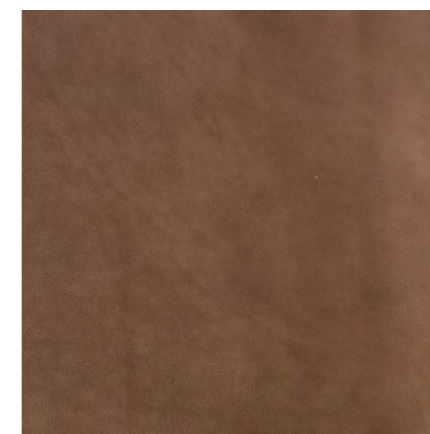
STONE



SMOG



FANGO



TESTA DI MORO



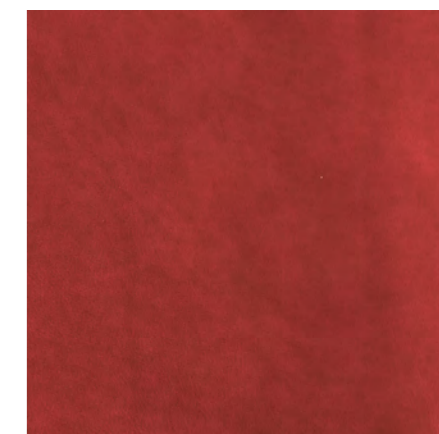
CAPREUVA



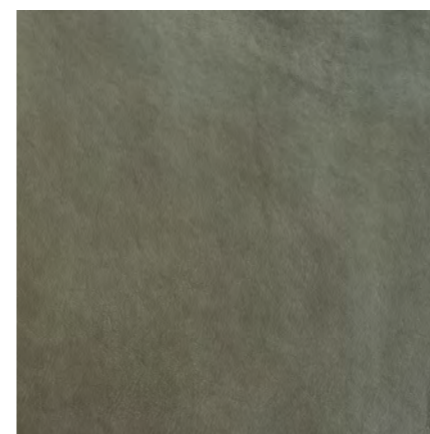
ZAFFERANO



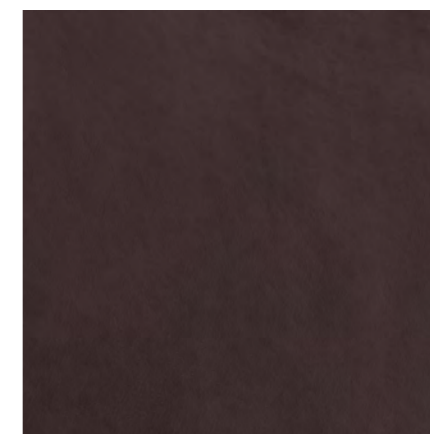
BERNSTEIN



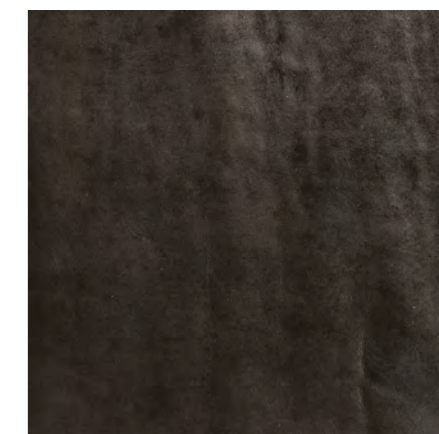
IBISCO



SALVIA



PRUGNA



NOTTE

VELVET LEATHER

GIOPAGANI



Bovine leather of European origin in nabuk finish, natural grain, aniline dyed, treated with high quality oils. Velvet look, suede touch and high comfort characterize this elegant leather that enriches everything it attires.

CAT. : A
Leather type: Cattle
Origin: Europe
Thickness: 1,2 / 1,4 mm
Dyeing: Aniline
Tanning: Chrome
Surface structure: Natural grain
Treatments: Water-repellent



CHALK



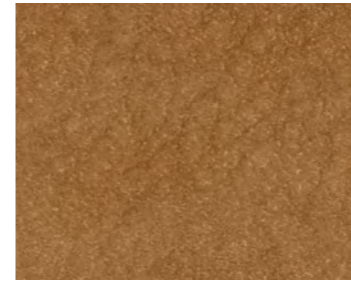
CONCRETE



CANGAROO



DOESKIN



CARMEL



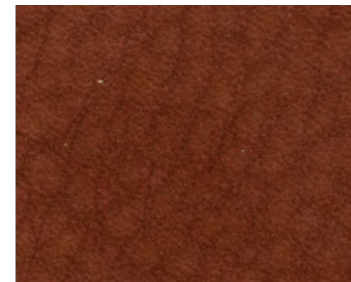
CAQUI



NUDE



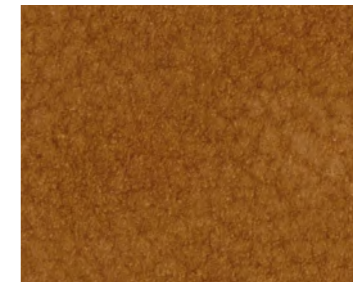
VISON



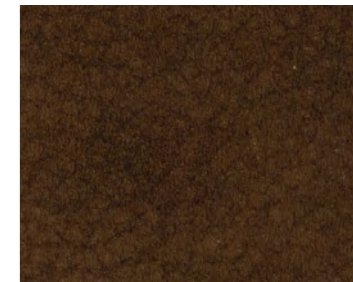
LUCKY



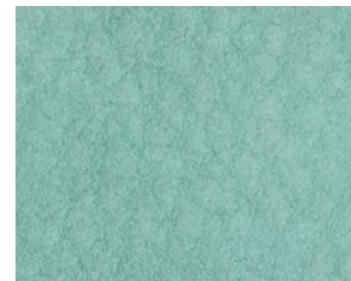
DUCK BILL



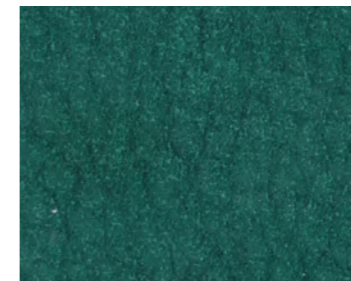
CUOIO



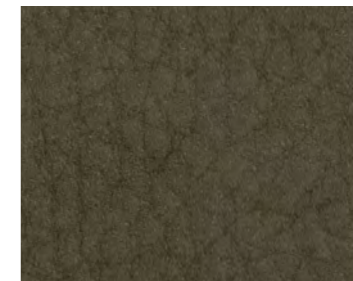
CHOCOLATE FOREST



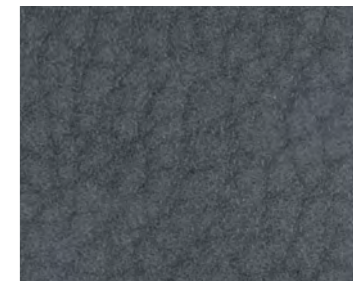
DREAM



EMERALD



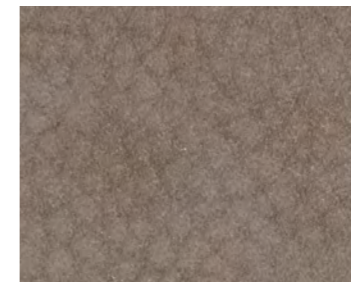
SALVIA



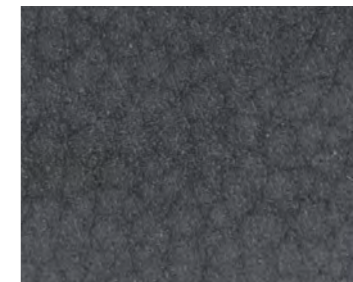
GRAPHITE



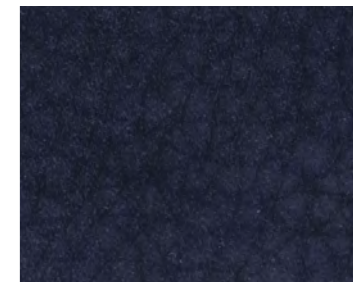
PLOMO



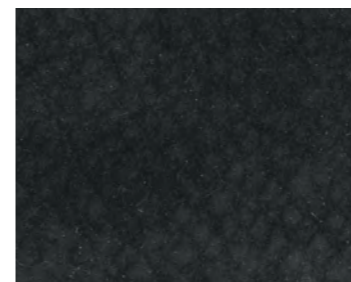
GENERE



EMATITE



TRUE BLU



ARDESIA

TOUCH LEATHER

GIOPAGANI



601



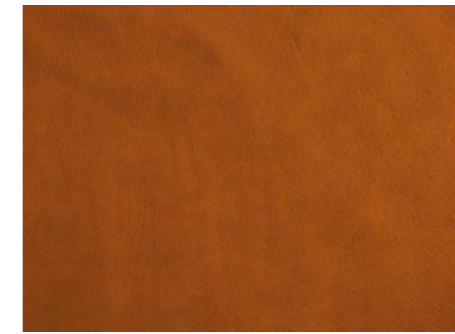
602



603



604



605



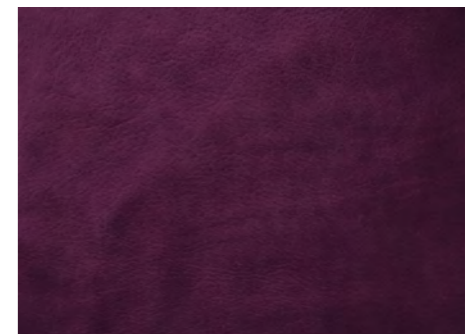
606



607



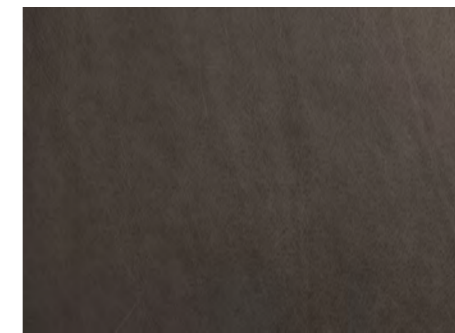
608



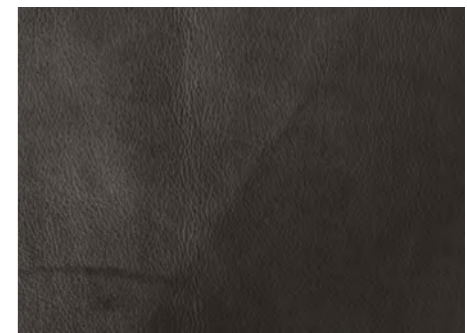
609



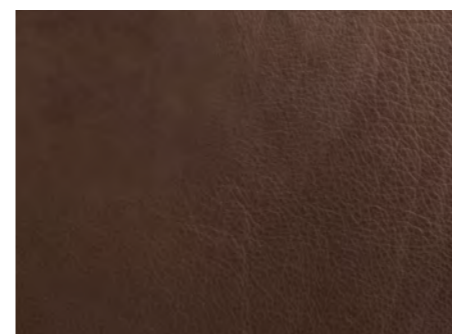
610



611



612



613

Cattle skins of European origin, chrome tanned, pure dyed aniline, greased and oiled with natural additives for an absolute tactile experience. Its softness and comfort, together with a polished and refined look, makes the Touch Leather the most precious hide in the collection.

CAT. : A
Leather type: Cattle
Origin: Europe
Thickness: 1,1 / 1,3mm
Dyeing: Aniline
Tanning: Chrome
Surface structure: Full grain

*PLEASE NOTE: The colors represented may not correspond to the actual color of the material. For a perfect match please contact our customer service to request a sample.

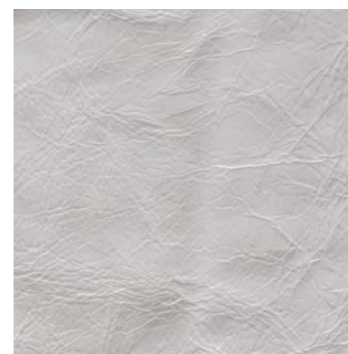
ROUGH LEATHER

GIOPAGANI



Calf aniline leather lightly buffed on surface, finished with a natural pigmented protective coating. The leather is finished with a vegetal matte protective coating.

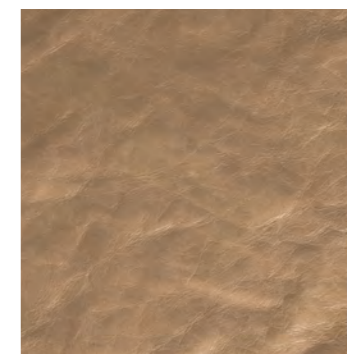
CAT. : C
Leather type: Calf
Origin: Australia
Thickness: 0,9 mm
Dyeing: Pass-through aniline
Tanning: Chrome
Surface structure: Buffed grain
Treatments: Water-repellent



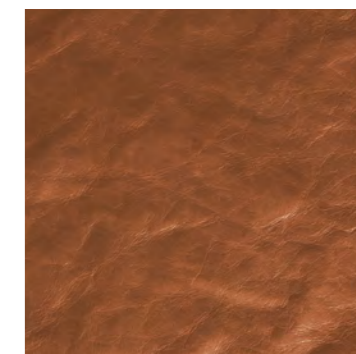
BIANCO



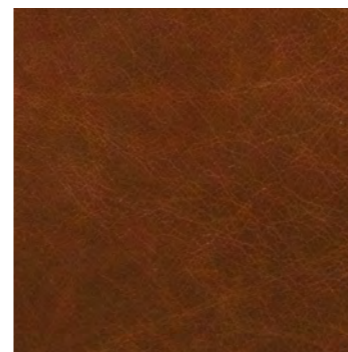
TALCO



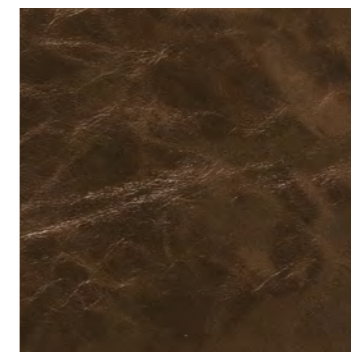
TORRONE



WHISKEY



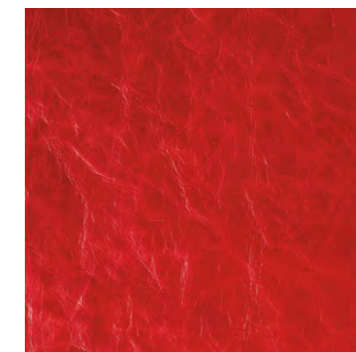
CASTAGNA



MOKA



SOLE



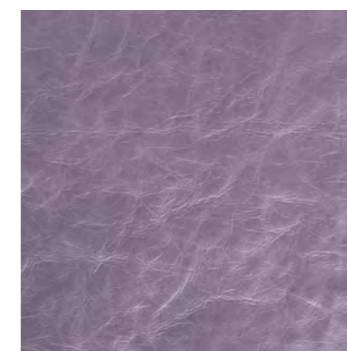
FIAMMA



RUBINO



MATTONE



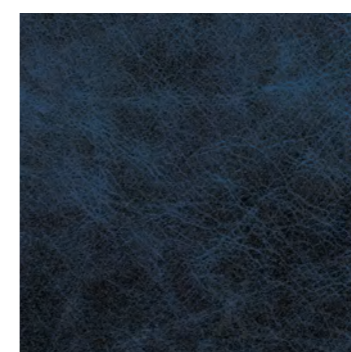
GLICINE



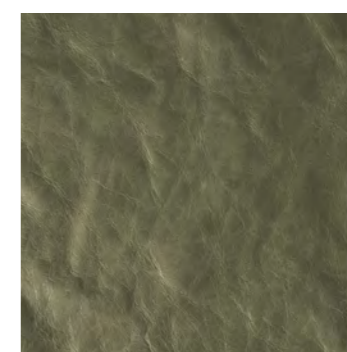
SKY



CELESTE



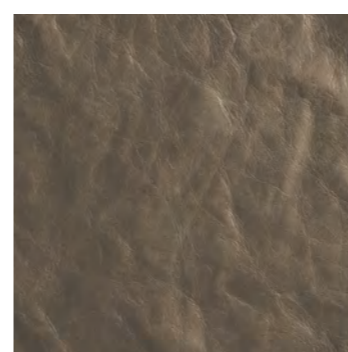
NAVY



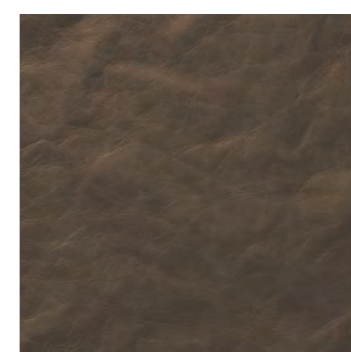
SALVIA



KIWI



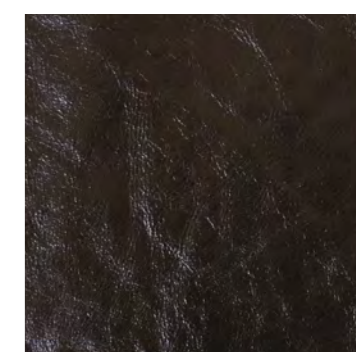
TAUPE



ELEFANTE



FUMO

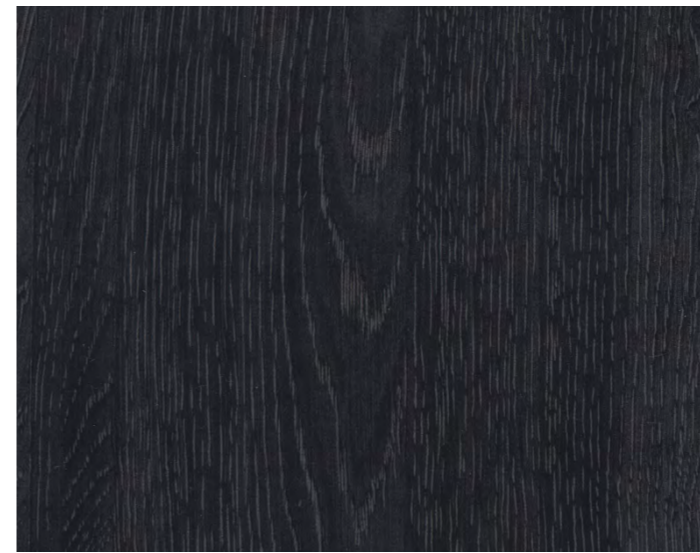


NERO

*PLEASE NOTE: The colors represented may not correspond to the actual color of the material. For a perfect match please contact our customer service to request a sample.

WOOD

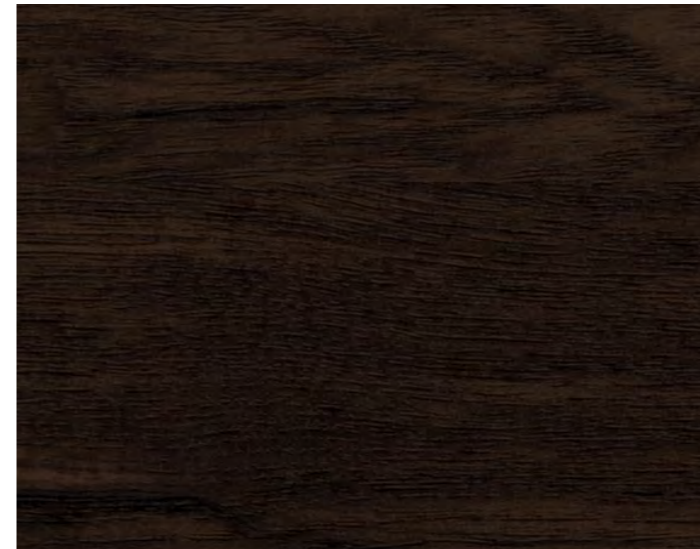
GIOPAGANI



BLACK ASH
Matte black open-pore ash wood



ELM WOOD
Matte open-pore solid elm wood



ELM WOOD DARK
Matte dark open-pore solid elm wood



BLACK FIR
Matte black open-pore dried fir wood

Classical refined essences pulled together with unique materials and graphics. A wood selection thought to satisfy the most demanding tastes and turn on unexpected choices.



GLOSSY CRAYON WOOD
Polyester coated wood with a 100 gloss lacquer finish



MATTE CRAYON WOOD
Coated wood with a soft touch matte finish

*PLEASE NOTE: The colors represented may not correspond to the actual color of the material. For a perfect match please contact our customer service to request a sample.

MARBLE

MARBLE

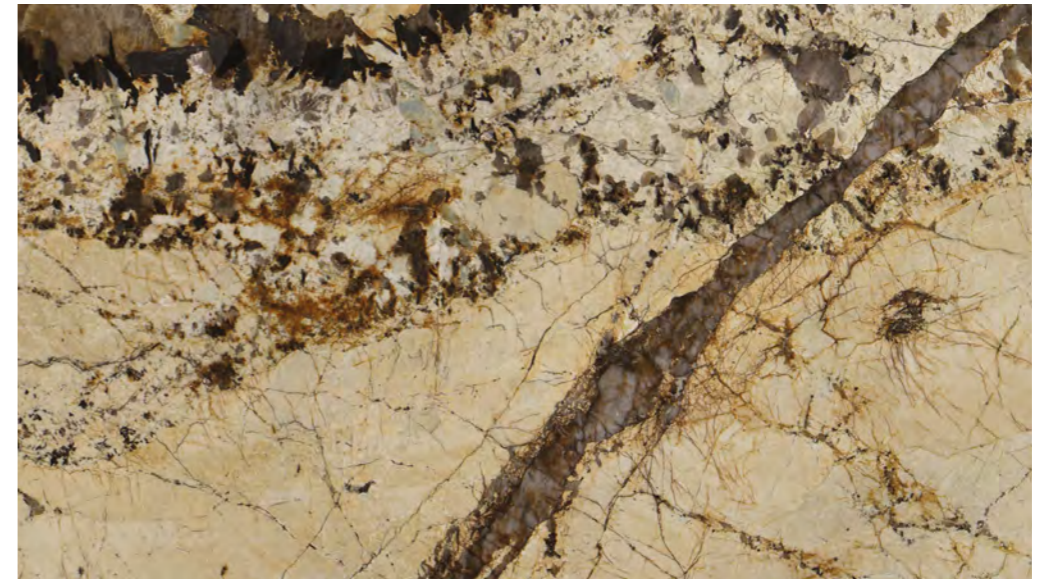
GIOPAGANI



A fine marble selection containing some of the most exclusive stones set to highlight every space with different personalities.



AMBROSIA



PATAGONIA



GREEN ONYX

*PLEASE NOTE: The colors represented may not correspond to the actual color of the material. For a perfect match please contact our customer service to request a sample.

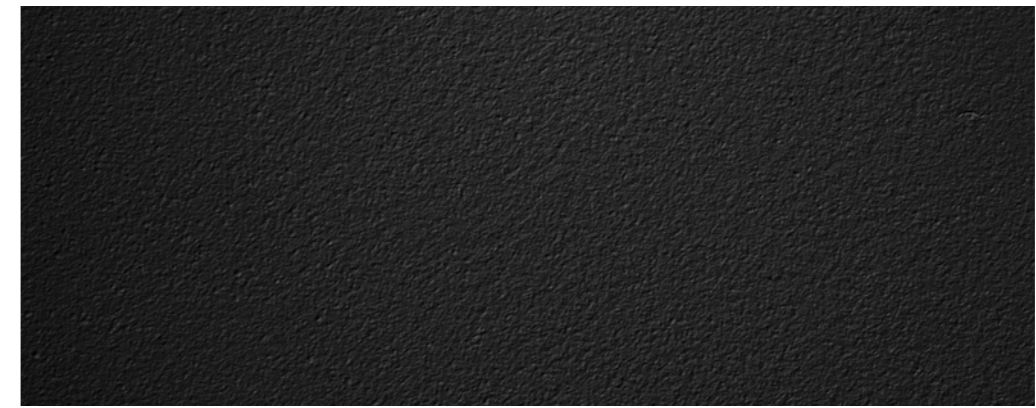
METAL

METAL

GIOPAGANI



Raw feelings and polished moments codified in the metal selection. Unique custom works to enlighten every space with a powerful dose of personality. Each finishing is studied to interpret a different mood and suit every environment.



MATTE BLACK

Black textured metal finished with a matte powder coating



BRUSHED BRASS

Handmade brushed patinated brass finish



RAW SILVER

Galvanic plated metal polished steel finish with a manual surface oxidation



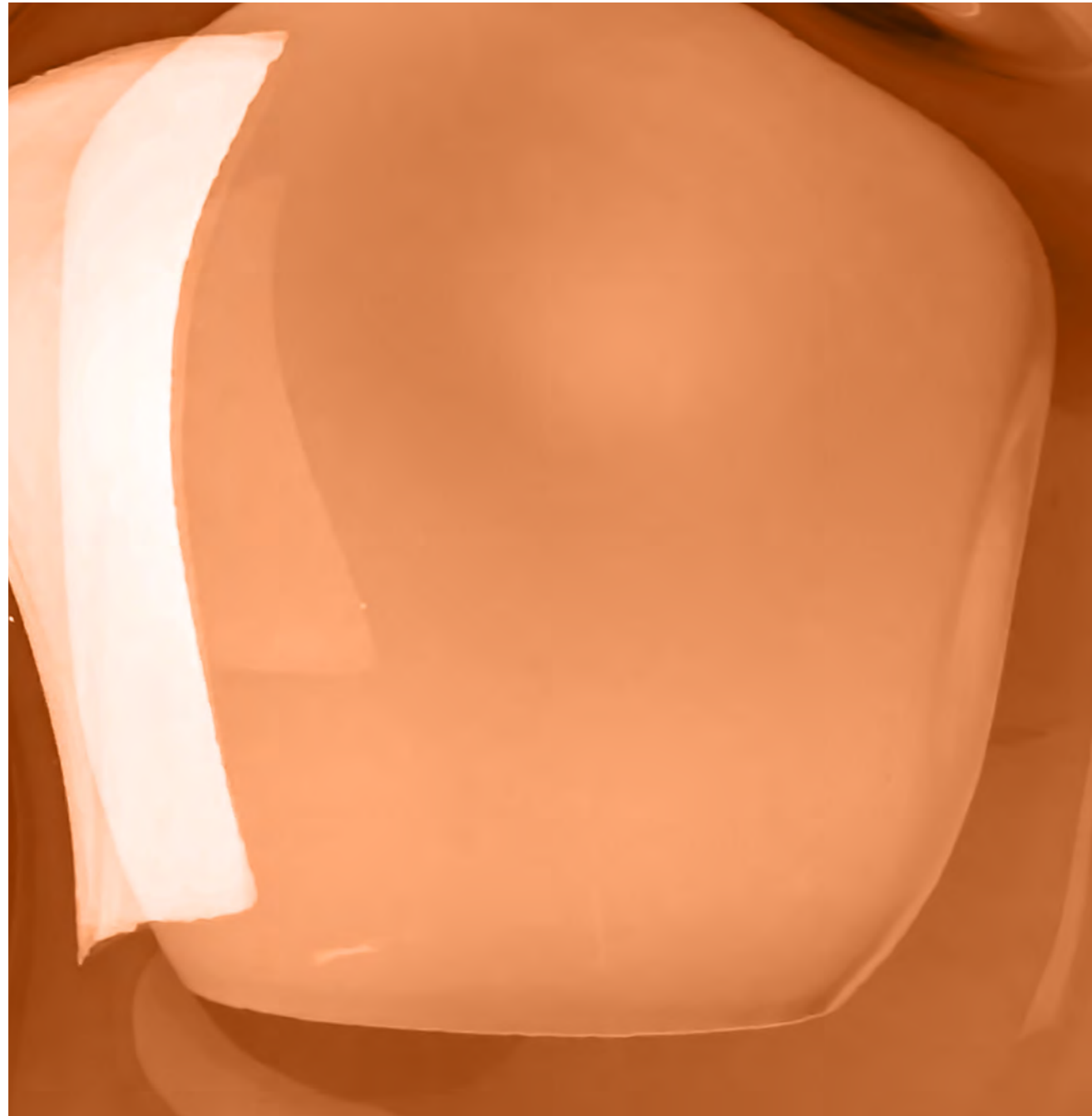
POLISHED STEEL

Metal polished steel finish

GLASS

GLASS

GIOPAGANI



CLEAR MIRROR



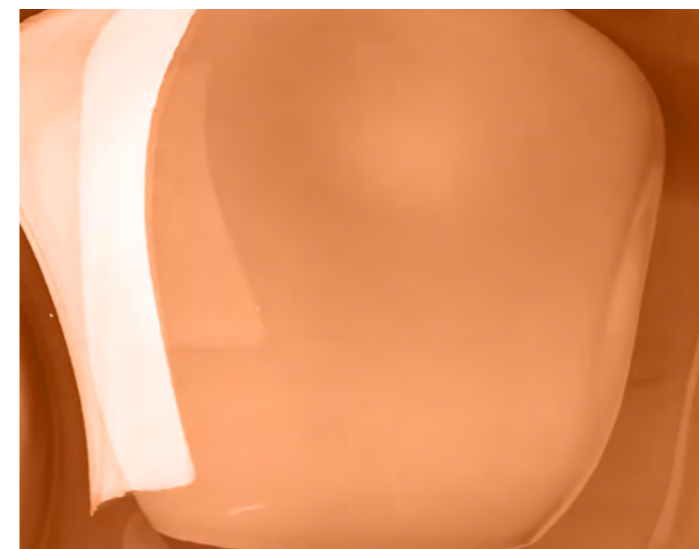
SMOKED MIRROR



BRONZED MIRROR



FADING WHITE BOULE*
*AVAILABLE FOR LIGHTING



AMBER BOULE*
*AVAILABLE FOR LIGHTING

Simple materials reinterpreted to bring to life memories and feelings long gone with a completely new attitude.

*PLEASE NOTE: The colors represented may not correspond to the actual color of the material. For a perfect match please contact our customer service to request a sample.

CRAYON COLOR CHART

CRAYON COLOR CHART

GIOPAGANI



Color is a fundamental part in the creative process of the Maison to give soul and personality to its products.
A code to link all the capsules throughout their inspiration.

GIOPAGANI signature color palette is meant to enhance any mood with personality.

Color defines the space in its maximum expressiveness and convey different feelings according to whom lives in the environment. A color code to represent the broad universe of the brand.

To leave freedom in the customization of the ambient playing with a 24 shades range, available for the woods and glasses of the GIOPAGANI furniture collection.



*PLEASE NOTE: The colors represented may not correspond to the actual color of the material. For a perfect match please contact our customer service to request a sample.

CARE & MAINTENANCE

CARE & MAINTENANCE

GIOPAGANI

LEATHER

GIOPAGANI leather selection is the result of an aesthetic and technical research aimed at offering a wide choice of high quality materials, treated with the most advanced methods to enhance each declination of this material.

In order to preserve the excellence of the raw material, all treatments and finishes tend to preserve the natural features of the leather, including signs due to the life of animals, such as cuts, bites, calluses, wrinkles, shadows, grain differences, etc. These features are the tangible testimony to the naturalness of the product and must therefore be considered as values and fundamental elements of the leather.

Each leather has its own special features deliberately kept by the tanner: shadows, scratches, shades of hue and stretches due to natural wrinkles. The coloring process for our Touch, Velvet and Timeless leathers is an aniline dyeing, a procedure which ensures the color fixing over time. This kind of leather has a thin shallow coating, and therefore is the most sensitive to wear effects, such as color transfer, particularly for dark shades.

Some of our leathers (Shining Leather and Velvet Leather) have a protective surface treatment that facilitates stain removal. This treatment may tend to lose its full effectiveness over time, due to the wear and the natural slow deterioration of the material. The other leathers in the collection, on the other hand, are totally natural and therefore any kind of stain, especially those due to animal or vegetable grease, will inevitably penetrate into the pores and it will not be possible to remove them.

With leather, as with fabrics, every batch of production could show small color differences from the supplied samples and elements produced in different moments.

Sizes relating to the upholstered parts are subject to tolerances of use in time caused by the normal settling of the padding.

LEATHER CARE AND MAINTENANCE

For daily cleaning of leather liners, pass a soft cloth to remove dust. In case of stains, intervene immediately and treat the surface with a well-clean white cloth dampened with lukewarm water. Do not rub too strongly on the surface.

Avoid using cleansers or alcohol that could permanently alter the appearance of the leather.

For greasy stains, gently remove the substance from the surface with absorbent paper, avoiding the pressure so that the dirt does not penetrate into the pores of the leather. Then, with a clean cloth soaked in a highly diluted neutral soap solution, gently rub the stain.

To remove coffee, tea, milk or soft stains, it is necessary to quickly buffer the liquid from the surface with a non-abrasive cloth or absorbent paper. Then, with a damp cloth, gently rub the stain and dry the area immediately with a dry cloth. Let the leather dry out in the open air, avoiding direct sunlight.

Avoid prolonged exposure to direct sunlight or light and heat sources. Do not expose to atmospheric agents and maintain a constant humidity level in the product display area. Do not use hair dryers. Do not iron or vaporize.

FABRIC & VELVET

GIOPAGANI fabric and velvet collection is the result of a deep and eclectic research for patterns, natural and synthetic threads, often exclusively custom made for our brand, capable of harmoniously dressing every product for any environment. The extensive proposal of the collection of fabrics and leathers is aimed at meeting the needs of an international market. The fabrics are subjected to a series of quality tests to ensure quality and durability over time such as: abrasion resistance, pilling formation, light fastness, tensile strength,

tear resistance and rubbing.

The jacquard fabric Zig Zag Birds is produced on a special frame with a mechanism able of creating complex and colored patterns. This device allows individual selection and lifting of all warp yarns, enabling the creation of a wide range of complex patterns and designs.

Sizes relating to the upholstered parts are subject to tolerances of use in time caused by the normal settling of the padding.

FABRIC CARE AND MAINTENANCE

For daily cleaning of fabric linings, pass a soft cloth to remove dust. Avoid using beaters and vacuum cleaners that can damage padding and lining. In case of stains, intervene immediately and treat the surface with a well-clean white cloth dampened with lukewarm water (moving from the center to the edges). If necessary, moisten the cloth with a specific detergent. Do not apply detergent directly to the fabric. Let the fabric dry outdoors. Do not iron or vaporize.

For the maintenance of velvet furniture, clean daily with a dry soft cloth or a soft brush to remove dust.

In case of stains, especially if of a greasy nature, absorb immediately with talc. Treat residual stains using a solution of Marseille soap, rubbing with a soft brush. It is also possible to use a special degreaser, testing it on a hidden part to verify that the fabric resists the treatment. Alternatively, use an appropriate dry foam.

Avoid prolonged exposure to direct sunlight or light and heat sources. Do not expose to atmospheric agents.

FUR

Mongolian fur, a distinctive and bold material, coming from a long-haired lamb variety typical of the Asian region of Mongolia, is characterized by a very soft and curly hair that gives warmth and

preciousness to the product.

Each Mongolia cloth is composed of different parts of fur stitched together, thus making each cloth unique. The length of the hair can vary from 10 to 15 centimeters (4-6 inches), a peculiar feature of Mongolia's natural fur.

Sizes relating to the upholstered parts are subject to tolerances of use in time caused by the normal settling of the padding.

FUR MAINTENANCE

For cleaning of Mongolian fur, contact a specialized center.

Longer or repeated contact with the product in the daily use may reduce the natural volume and curliness of the fur. Contact a specialized center to revive the fur.

Avoid prolonged exposure to direct sunlight or light and heat sources. Do not expose to atmospheric agents. Keep in a cool and dry place. Do not use the hairdryer. Do not cover the fur with plastic. Avoid the use of chemicals. Friction may cause a substantial hair shedding.

METAL

Galvanic finishes (brass and steel) benefit from strong resistance, excellent aesthetic impact and anti-adhesion to dirt. In addition to the aesthetic quality, GIOPAGANI guarantees its buyer a durable and long-lasting product, which is why a very strict and controlled production cycle is adopted in all stages of manufacturing. Matte Black metal is a powder coating finish with a rough texturization.

To complete the selection of finishes, research materials have been inserted to represent the avant-garde stylistic soul of the brand. Raw Silver has an handmade surface acidification that give the metal a natural aging appearance.

METALS CARE AND MAINTENANCE

For the treatment of galvanized metal surfaces, it is possible to rub them gently using a cloth damp in a water emulsion with specific detergents. Dry with a soft cloth. We recommend the use of non-aggressive cleansers to minimize the chances of deterioration of finishes. Do not use abrasive cloths or sponges.

WOOD

Wood is a living material and every plant has a unique structure and character, which means that there are no two identical products and that can not be guaranteed the same appearance even if they are made of the same essence. Nodes and veins are also common features of naturally growing materials, they document the natural origin of the veneer. The very structure of wood and its processing are a cause of different reactions of the individual parts to the dyes and finishing materials. These matters can not be subject to a claim.

Wood as a natural material continues to breathe and reacts to the surrounding environment. Consequently, micro cracks may occur in the lacquering or the surface grain may emphasize slightly during the life of the product. Liquids act negatively on the surface, on which may remains stains or marks of objects sitting on top. Therefore, all spilled liquids should be dried immediately. The lacquered or oily surface can also change color or be damaged by contact with a hot object. This undesirable effect can be prevented with careful use and the application of insulating mats under pots and hot objects.

The glossy lacquering process is a long and complex procedure that seeks to obtain, through many polyester paint passages, a 100 gloss or "mirror" lacquer, the maximum grade obtainable by this type of finish. This process is subject to numerous environmental factors such as temperature, humidity and ambient lighting at the time of application, which may cause slight variations in the final result.

The matte finish for the Crayon color collection woods has a superficial coating that gives them a soft touch effect while protecting them from shallow scratches. All GIOPAGANI products are made of non-toxic water-based paints.

MAINTENANCE OF WOOD SURFACES

For daily maintenance, use a clean cloth and dry cleaner of fluff-less material (cotton, linen, buckskin). When dusting the furniture, do not exert too much pressure on the cloth to avoid scratching the surface irreversibly.

Do not use abrasive concentrates or detergents (abrasive and polishing paste, powders) as they may scratch and damage the lacquered surface. Do not polish surfaces that contain oils or waxes on opaque finishes, as they may produce shades and halos on the surface.

Do not expose the products to direct sunlight or heat sources for a long time, this may alter the color of wood and lacquer. Avoid using products containing alcohol, acetone, ammonia, chlorine and solvents, abrasive products, and furniture waxes.

In case of liquid spilling, immediately dry. Do not let large stains dry on the surface but immediately remove them with a damp cotton cloth and then dry the treated area.

MARBLE

Marble slabs are selected one by one depending on the intended use, always looking for the uniqueness and peculiarity of the natural material, which will, by its nature, be always different and inimitable. The type and the vein of the stone used are subject to various factors, such as availability, origin and variety at the time of production that may affect the final appearance of the product. This determines that there are no two identical products and the same appearance can not be guaranteed even if they come from the same slab.

Marbles, onyxes and stones used are natural materials, whose characteristics remain unaltered at all stages of manufacturing. For this reason, the veins and shades of color may have differences that should not be considered as flaws, but they rather enhance the uniqueness of the product.

All the marbles are finished with a transparent polyester coating to enhance surface protection. This treatment emphasizes the marble texture and its

color reflection, ensuring waterproofness without altering the natural hue of the surface. By its nature, however, marble is a delicate material that stains and scratches easily; avoid therefore direct contact with glasses and bottles, as well as drinks, alcohol or other acidic liquids that tend to damage the glossy surface if left on the marble for a long time. Immediately clean the liquid spill and wipe the surface with a damp cloth. If the surface is scratched, polishing may be necessary.

MARBLES CARE AND MAINTENANCE

Remove dust with a soft cloth. In the case of stains caused by liquids or oily substances, remove dirt immediately with an absorbent cloth and then pass the entire surface with a damp cloth with lukewarm water. These operations must be carried out with care, so not to scratch the surface.

Avoid using products containing alcohol, acetone, ammonia, chlorine and solvents, abrasive products and furniture waxes as they may damage the surface of the product indelibly, making it opaque and with halos.

GLASS

The selection of glasses and mirrors in the collection consists of materials of absolute quality and aesthetic refinement. The glasses used in the production of our dining tables, coffee tables and cabinets are tempered before being installed on the product to guarantee resistance and durability of the finishes.

The Antique Green, Amber and Fading White glasses, used only for the GIOPAGANI lighting accessories, are handmade with the Murano glass technique in full respect of one of the most important traditions of the Italian craftsmanship. The artisanal nature of these materials makes each piece unique and can show imperfections or slight differences with other products, even if made in the same production batch. These details are not to be considered flaws but plus values that enhance the uniqueness of our products.

GLASS CARE AND MAINTENANCE

Remove dust with a soft cloth. It is advisable to clean the glass parts by

using alcohol diluted with water or glass products, then dry with a soft cloth. These operations must be carried out with care, in order not to scratch the surface. Avoid using products containing acetone, ammonia, chlorine and solvents, abrasive products and waxes for furniture to avoid residue on the surface.

NOTES

SuperSignum s.r.l.

GIOPAGANI HEADQUARTER
+39 0522 90 21 45
via Emilia, 14
42043 Gattatico, Reggio Emilia
Italy

e. info@giopagani.com
w. www.giopagani.com

All **GIO**PAGANI products are protected by registered trademark