

# Gioielli Ceiling/Wall

GLCW

 IP20

## Materials

Handblown Murano glass, and lost wax brass casting and turned brass. All hand finished.

Metal finish: Brushed Brass

## Power Input

110-120V 50-60Hz

## Light Source (included)

Proprietary Gioielli LEDs,  
2700K warm white. CRI>95.

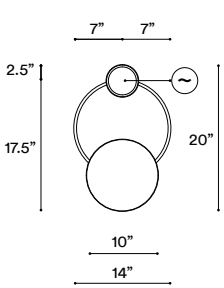


GIOIELLI CEILING/WALL 04

## CONFIGURATION

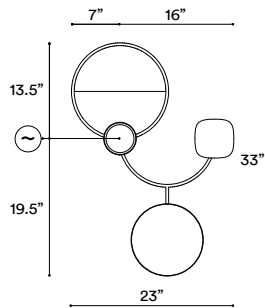
### STEP 1 - CHOOSE MODEL

MODEL (UNIT: IN)



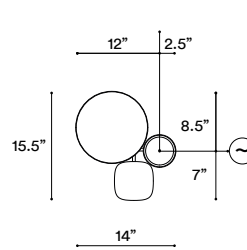
01

9 Watts, 450 Lumens  
Weight: ~8 lbs



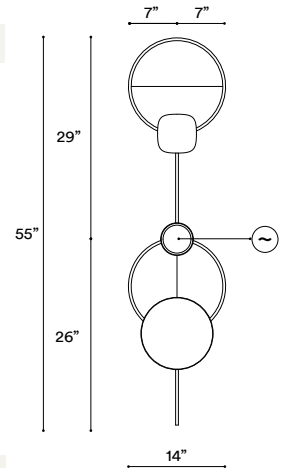
02

13.5 Watts, 670 Lumens  
Weight: ~10 lbs



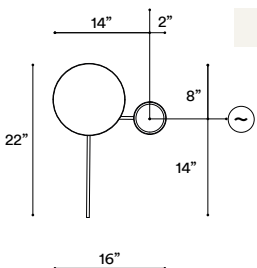
03

13.5 Watts, 670 Lumens  
Weight: ~8,8 lbs



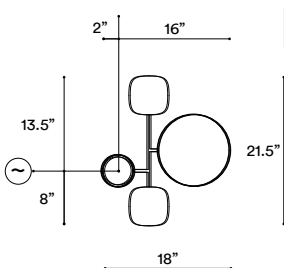
04

13.5 Watts, 670 Lumens  
Weight: ~13 lbs



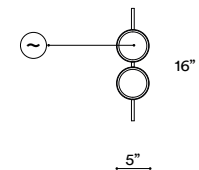
05

9 Watts, 450 Lumens  
Weight: ~8 lbs



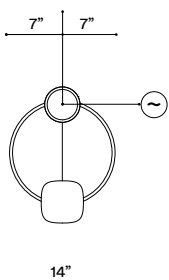
06

18 Watts, 900 Lumens  
Weight: ~10 lbs



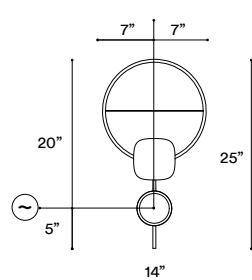
07

9 Watts, 450 Lumens  
Weight: ~6.6 lbs



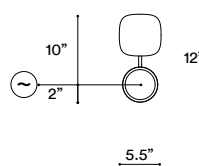
09

9 Watts, 450 Lumens  
Weight: ~8 lbs



10

9 Watts, 450 Lumens  
Weight: ~10 lbs



11

9 Watts, 450 Lumens  
Weight: ~6.6 lbs

---

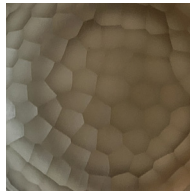
**STEP 2 - CHOOSE GLASS COLOUR\***

GLASS

\*not valid for 01, 05, 07 models



EMERALD



TAUPE

---

**STEP 3 - CHOOSE YOUR DRIVER**

DRIVER

+ **Built-in phasecut driver.** Recommended.

PHASECUT

+**Built-in driver and alternative dimmable standards,** if required by electrician.

1-10 VOLT

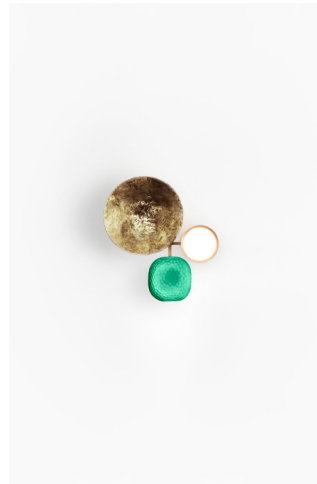
ALL GIOIELLI CEILING/WALL



GIOIELLI CEILING/WALL 01



GIOIELLI CEILING/WALL 02



GIOIELLI CEILING/WALL 03



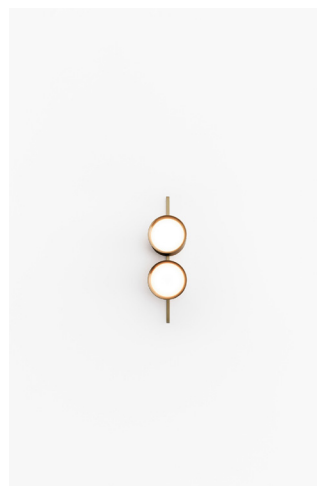
GIOIELLI CEILING/WALL 04



GIOIELLI CEILING/WALL 05



GIOIELLI CEILING/WALL 06



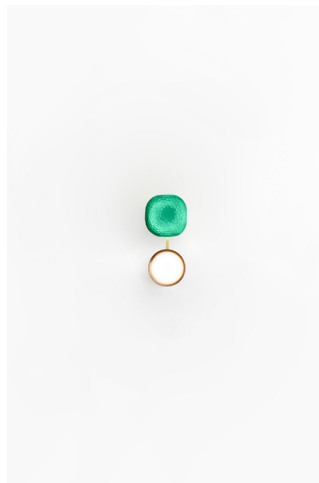
GIOIELLI CEILING/WALL 07



GIOIELLI CEILING/WALL 09



GIOIELLI CEILING/WALL 10



GIOIELLI CEILING/WALL 11