

Gem Pendant Vertical 07

GMPEVR07

 IP20

Materials

Hand blown corroded borosilicate glass and hand finished or electroplated brass.

Weight incl. canopy

~18 lbs

Power Input

110-120V 50-60Hz

Light Source (included)

7 Proprietary Gem LEDs.
15W, 1450 Lumens, 2700K warm white. CRI>95.

Optional Downlight available on request,
2.2W, 206 Lumens

CONFIGURATION

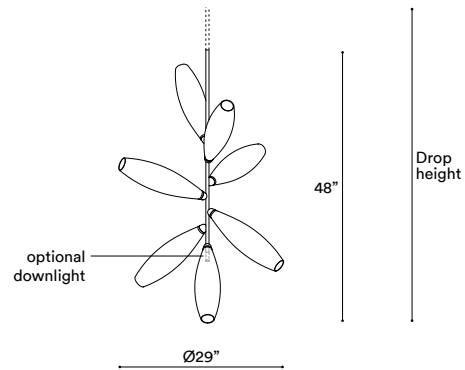
STEP 1 - CHOOSE YOUR METAL FINISH

	BRUSHED BRASS
	BRUSHED BRONZE
	BLACKENED BRASS
	BRUSHED NICKEL
	POLISHED NICKEL



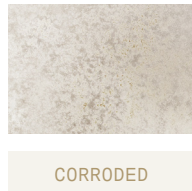
GEM PENDANT VERTICAL 07

SIZE (UNIT: IN)



STEP 2 - CHOOSE YOUR GLASS FINISH

GLASS



Metal tube to order

Specify your Drop height in cm to our sales team.

Note:

No cable showing

Not adjustable on site.

Drop Height Minimum: 50"

MADE TO ORDER

Drop Height Kit

Note:

No cable showing, Adjustable on site

Drop Height min.: 52",

max.: 113" by combining five tubes of different length from 2" to 31.5"

DROP HEIGHT KIT

STEP 4 - CHOOSE YOUR CANOPY AND DRIVER

+ **Single canopy with built-in phasecut driver.** Recommended.

Ø5" X H2"



MATCHING FINISH

PHASECUT

+ **Single canopy with built-in driver and alternative dimmable standards,** if required by electrician.

Ø7" X H2"



MATCHING FINISH

1-10 VOLT

Brushed Brass

Brass hand finished with horizontal brushing. Protected with a semi-gloss transparent coating.

Brushed Bronze

Brass with accelerated aging to become a bronze finish. Hand finished with horizontal brushing. Protected with a semi-matt transparent coating.

Blackened Brass

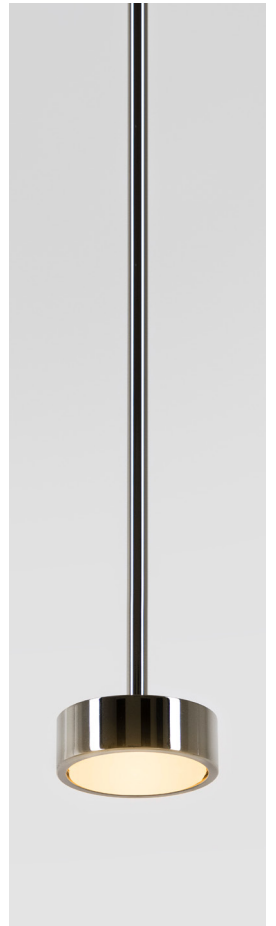
Brass with accelerated aging to become an extra dark chocolate finish. Hand finished with horizontal brushing. Protected with a semi-matt transparent coating.

Brushed Nickel

Electroplated nickel over Brass with horizontal brushing. Protected with a semi-gloss transparent coating.

Polished Nickel

Electroplated Nickel over polished brass. Protected with a semi-gloss transparent coating.



Custom Finish

Our products can be customized with most metal finishes, please check with our design advisors if you have any particular requirement.

Please advise if our products are to be installed close to air conditioning vents or in windy or salty air conditions.