

Gem Pendant Cluster 06

GMPECU06

 IP20

Materials

Hand blown corroded borosilicate glass and hand finished or electroplated brass.

Weight incl. canopy

~16 lbs

Power Input

110-120V 50-60Hz

Light Source (included)

6 Proprietary Gem LEDs.
13W, 1240 Lumens, 2700K warm white. CRI>95.

Optional Downlight available on request,
2.2W, 206 Lumens

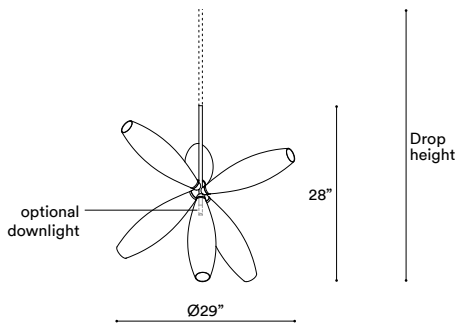


GEM PENDANT CLUSTER 06

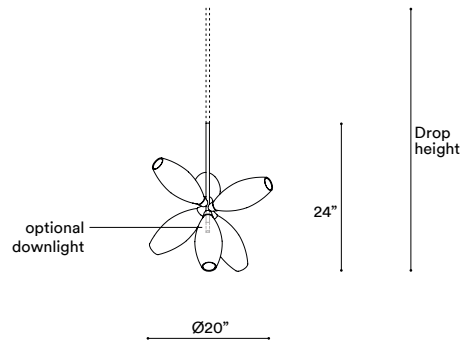
CONFIGURATION

STEP 1 - CHOOSE YOUR SIZE

SIZE (UNIT: IN)



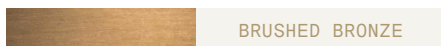
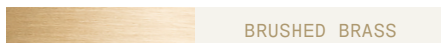
CLUSTER 06



CLUSTER 06 SMALL

STEP 2 - CHOOSE YOUR METAL FINISH

METAL FINISH



STEP 3 - CHOOSE YOUR GLASS FINISH

GLASS



Metal tube to order

Specify your Drop height in cm to our sales team.

Note:

No cable showing

Not adjustable on site.

Drop Height Minimum: 30"/26"

MADE TO ORDER

Drop Height Kit

Note:

No cable showing, Adjustable on site

Drop Height min.: 32"/28",

max.: 93"/89" by combining five tubes of different length from 2" to 31.5"

DROP HEIGHT KIT

+ **Single canopy with built-in phasecut driver.** Recommended.

Ø5" X H2"



MATCHING FINISH

PHASECUT

+ **Single canopy with built-in driver and alternative dimmable standards,** if required by electrician.

Ø7" X H2"



MATCHING FINISH

1-10 VOLT

Gem Pendant Cluster 09

GMPECU09

 IP20

Materials

Hand blown corroded borosilicate glass and hand finished or electroplated brass.

Weight incl. canopy

~20 lbs

Power Input

110-120V 50-60Hz

Light Source (included)

9 Proprietary Gem LEDs.
20W, 1860 Lumens, 2700K warm white. CRI>95.

Optional Downlight available on request,
2.2W, 206 Lumens

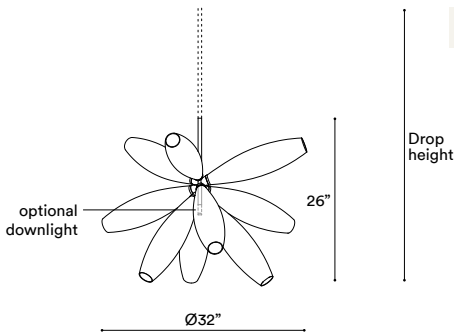


GEM PENDANT CLUSTER 09

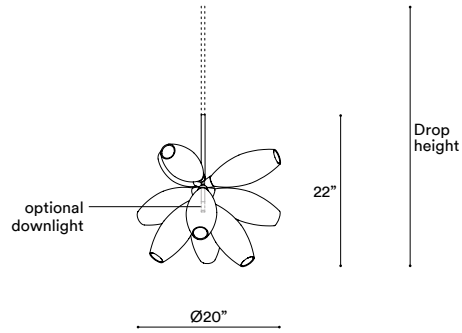
CONFIGURATION

STEP 1 - CHOOSE YOUR SIZE

SIZE (UNIT: IN)



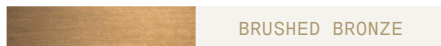
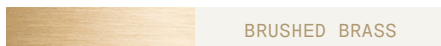
CLUSTER 09



CLUSTER 09 SMALL

STEP 2 - CHOOSE YOUR METAL FINISH

METAL FINISH



STEP 3 - CHOOSE YOUR GLASS FINISH

GLASS



Metal tube to order

Specify your Drop height in cm to our sales team.

Note:

No cable showing

Not adjustable on site.

Drop Height Minimum: 28"/26"

MADE TO ORDER

Drop Height Kit

Note:

No cable showing, Adjustable on site

Drop Height min.: 30"/28",

max.: 91"/89" by combining five tubes of different length from 2" to 31.5"

DROP HEIGHT KIT

+ **Single canopy with built-in phasecut driver.** Recommended.

Ø7" X H2"



MATCHING FINISH

PHASECUT

+ **Single canopy with built-in driver and alternative dimmable standards,** if required by electrician.

Ø7" X H2"



MATCHING FINISH

1-10 VOLT

Gem Pendant Vertical 07

GMPEVR07

 IP20

Materials

Hand blown corroded borosilicate glass and hand finished or electroplated brass.

Weight incl. canopy

~18 lbs

Power Input

110-120V 50-60Hz

Light Source (included)

7 Proprietary Gem LEDs.
15W, 1450 Lumens, 2700K warm white. CRI>95.

Optional Downlight available on request,
2.2W, 206 Lumens

CONFIGURATION

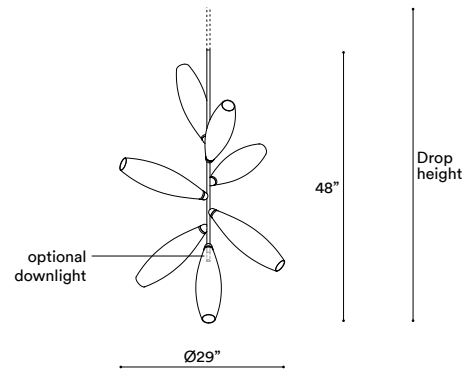
STEP 1 - CHOOSE YOUR METAL FINISH

	BRUSHED BRASS
	BRUSHED BRONZE
	BLACKENED BRASS
	BRUSHED NICKEL
	POLISHED NICKEL



GEM PENDANT VERTICAL 07

SIZE (UNIT: IN)



STEP 2 - CHOOSE YOUR GLASS FINISH

GLASS



Metal tube to order

Specify your Drop height in cm to our sales team.

Note:

No cable showing

Not adjustable on site.

Drop Height Minimum: 50"

MADE TO ORDER

Drop Height Kit

Note:

No cable showing, Adjustable on site

Drop Height min.: 52",

max.: 113" by combining five tubes of different length from 2" to 31.5"

DROP HEIGHT KIT

+ **Single canopy with built-in phasecut driver.** Recommended.

Ø5" X H2"



MATCHING FINISH

PHASECUT

+ **Single canopy with built-in driver and alternative dimmable standards,** if required by electrician.

Ø7" X H2"



MATCHING FINISH

1-10 VOLT

Gem Pendant Vertical 14

GMPEVR14

 IP20

Materials

Hand blown corroded borosilicate glass and hand finished or electroplated brass.

Weight incl. canopy

~29 lbs

Power Input

110-120V 50-60Hz

Light Source (included)

14 Proprietary Gem LEDs.
31W, 2900 Lumens, 2700K warm white. CRI>95.

Optional Downlight available on request,
2.2W, 206 Lumens

CONFIGURATION

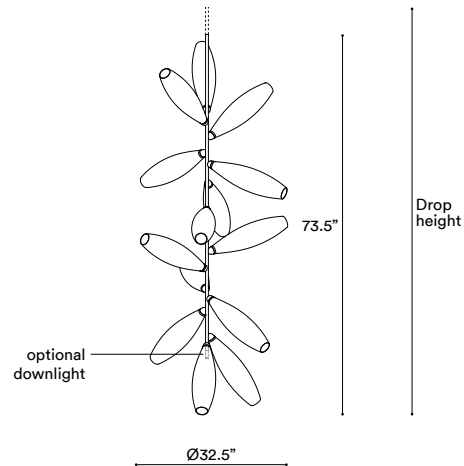
STEP 1 - CHOOSE YOUR METAL FINISH

	BRUSHED BRASS
	BRUSHED BRONZE
	BLACKENED BRASS
	BRUSHED NICKEL
	POLISHED NICKEL



GEM PENDANT VERTICAL 14

SIZE (UNIT: IN)

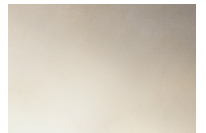


STEP 2 - CHOOSE YOUR GLASS FINISH

GLASS



CORRODED



MIST

Metal tube to order

Specify your Drop height in cm to our sales team.

Note:

No cable showing

Not adjustable on site.

Drop Height Minimum: 76"

MADE TO ORDER

Drop Height Kit

Note:

No cable showing, Adjustable on site

Drop Height min.: 77.5",

max.: 138.5" by combining five tubes of different length from 2" to 31.5"

DROP HEIGHT KIT

+ **Single canopy with built-in phasecut driver.** Recommended.

Ø7" X H2"



MATCHING FINISH

PHASECUT

+ **Single canopy with built-in driver and alternative dimmable standards,** if required by electrician.

Ø7" X H2"



MATCHING FINISH

1-10 VOLT

Gem Chandelier Branch 08

GMCHBH08

 IP20

Materials

Hand blown corroded borosilicate glass and hand finished or electroplated brass.

Weight incl. canopy

~18 lbs

Power Input

110-120V 50-60Hz

Light Source (included)

8 Proprietary Gem LEDs,
17W, 1650 Lumens, 2700K warm white. CRI>95.



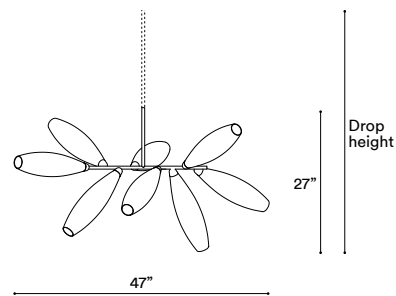
GEM CHANDELIER BRANCH 08

CONFIGURATION

STEP 1 - CHOOSE YOUR METAL FINISH

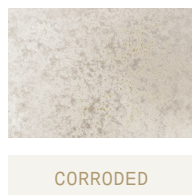
	BRUSHED BRASS
	BRUSHED BRONZE
	BLACKENED BRASS
	BRUSHED NICKEL
	POLISHED NICKEL

SIZE (UNIT: IN)



STEP 2 - CHOOSE YOUR GLASS FINISH

GLASS



Metal tube to order

Specify your Drop height in cm to our sales team.

Note:

No cable showing

Not adjustable on site.

Drop Height Minimum: 29"

MADE TO ORDER

Drop Height Kit

Note:

No cable showing, Adjustable on site

Drop Height min.: 31",

max.: 92" by combining five tubes of different length from 2" to 31.5"

DROP HEIGHT KIT

+ **Single canopy with built-in phasecut driver.** Recommended.

Ø5" X H2"



MATCHING FINISH

PHASECUT

+ **Single canopy with built-in driver and alternative dimmable standards,** if required by electrician.

Ø7" X H2"



MATCHING FINISH

1-10 VOLT

Gem Chandelier Branch 10

GMCHBH10

 IP20

Materials

Hand blown corroded borosilicate glass and hand finished or electroplated brass.

Weight incl. canopy

~22 lbs

Power Input

110-120V 50-60Hz

Light Source (included)

10 Proprietary Gem LEDs,
17W, 1650 Lumens, 2700K warm white. CRI>95.



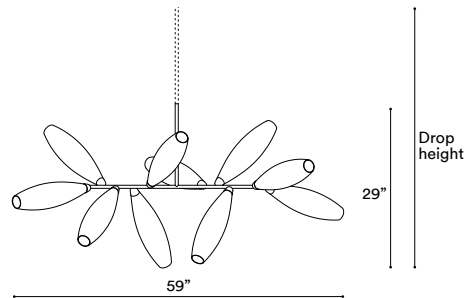
GEM CHANDELIER BRANCH 10

CONFIGURATION

STEP 1 - CHOOSE YOUR METAL FINISH

	BRUSHED BRASS
	BRUSHED BRONZE
	BLACKENED BRASS
	BRUSHED NICKEL
	POLISHED NICKEL

SIZE (UNIT: IN)



STEP 2 - CHOOSE YOUR GLASS FINISH

GLASS



Metal tube to order

Specify your Drop height in cm to our sales team.

Note:

No cable showing

Not adjustable on site.

Drop Height Minimum: 31"

MADE TO ORDER

Drop Height Kit

Note:

No cable showing, Adjustable on site

Drop Height min.: 33",

max.: 94" by combining five tubes of different length from 2" to 31.5"

DROP HEIGHT KIT

+ **Single canopy with built-in phasecut driver.** Recommended.

Ø5" X H2"



MATCHING FINISH

PHASECUT

+ **Single canopy with built-in driver and alternative dimmable standards,** if required by electrician.

Ø7" X H2"



MATCHING FINISH

1-10 VOLT

Gem Chandelier Branch 14

GMCHBH14

 IP20

Materials

Hand blown corroded borosilicate glass and hand finished or electroplated brass.

Weight incl. canopy

~31 lbs

Power Input

110-120V 50-60Hz

Light Source (included)

8 Proprietary Gem LEDs, 17W, 1650 Lumens, 2700K warm white. CRI>95.



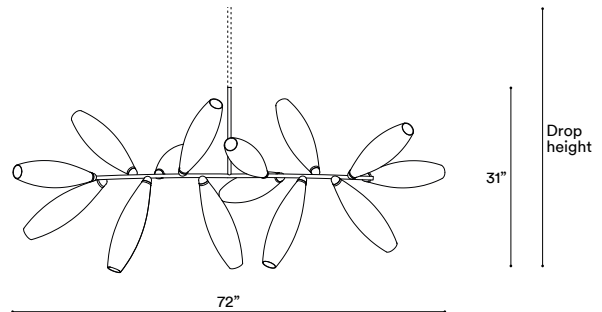
GEM CHANDELIER BRANCH 14

CONFIGURATION

STEP 1 - CHOOSE YOUR METAL FINISH

	BRUSHED BRASS
	BRUSHED BRONZE
	BLACKENED BRASS
	BRUSHED NICKEL
	POLISHED NICKEL

SIZE (UNIT: IN)



STEP 2 - CHOOSE YOUR GLASS FINISH

GLASS

			
	CORRODED		MIST

Metal tube to order

Specify your Drop height in cm to our sales team.

Note:

No cable showing

Not adjustable on site.

Drop Height Minimum: 33"

MADE TO ORDER

Drop Height Kit

Note:

No cable showing, Adjustable on site

Drop Height min.: 35",

max.: 96" by combining five tubes of different length from 2" to 31.5"

DROP HEIGHT KIT

+ **Single canopy with built-in phasecut driver.** Recommended.

Ø7" X H2"



MATCHING FINISH

PHASECUT

+ **Single canopy with built-in driver and alternative dimmable standards,** if required by electrician.

Ø7" X H2"



MATCHING FINISH

1-10 VOLT

Gem Chandelier Ring 10

GMCHRN10

 IP20

Materials

Hand blown corroded borosilicate glass and hand finished or electroplated brass.

Weight incl. canopy

~22 lbs

Power Input

110-120V 50-60Hz

Light Source (included)

10 Proprietary Gem LEDs.
22W, 2070 Lumens, 2700K warm white. CRI>95.

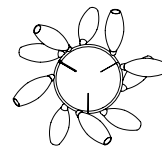
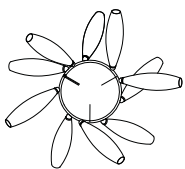
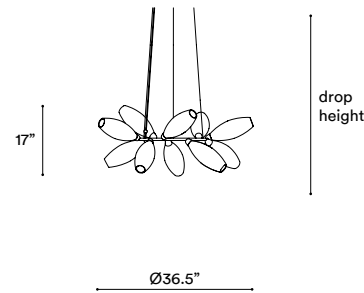
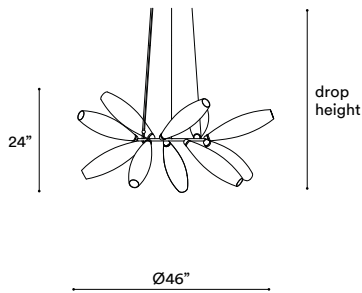


GEM CHANDELIER RING 10

CONFIGURATION

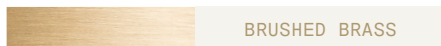
STEP 1 - CHOOSE YOUR SIZE

SIZE (UNIT: IN)



STEP 2 - CHOOSE YOUR METAL FINISH

METAL FINISH



BRUSHED BRASS



BLACKENED BRASS



POLISHED NICKEL



BRUSHED BRONZE



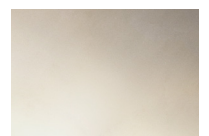
BRUSHED NICKEL

STEP 3 - CHOOSE YOUR GLASS FINISH

GLASS



CORRODED



MIST

Steel Wire and Flex Cable
Suspension, adjustable on site.

Available options:

157"

393"

+ **Single canopy with built-in phasecut driver.** Recommended.

Ø7" X H2"



MATCHING FINISH

PHASECUT

+ **Single canopy with built-in driver and alternative dimmable standards,** if required by electrician.

Ø7" X H2"



MATCHING FINISH

1-10 VOLT

Gem Chandelier Ring 14

GMCHR14

 IP20

Materials

Hand blown corroded borosilicate glass and hand finished or electroplated brass.

Weight incl. canopy

~29 lbs

Power Input

110-120V 50-60Hz

Light Source (included)

14 Proprietary Gem LEDs.
31W, 2900 Lumens, 2700K warm white. CRI>95.

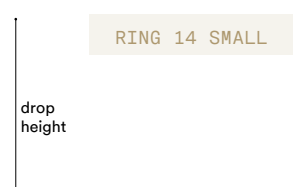
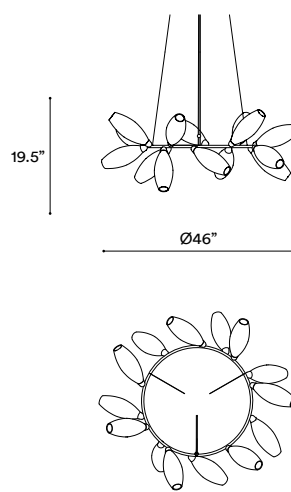
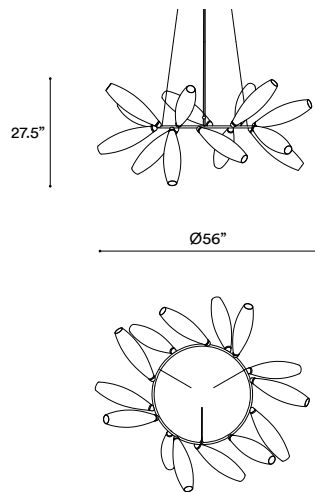


GEM CHANDELIER RING 14

CONFIGURATION

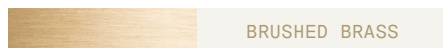
STEP 1 - CHOOSE YOUR SIZE

SIZE (UNIT: IN)



STEP 2 - CHOOSE YOUR METAL FINISH

METAL FINISH



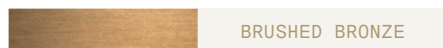
BRUSHED BRASS



BLACKENED BRASS



POLISHED NICKEL



BRUSHED BRONZE



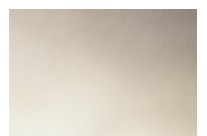
BRUSHED NICKEL

STEP 3 - CHOOSE YOUR GLASS FINISH

GLASS



CORRODED



MIST

Steel Wire and Flex Cable
Suspension, adjustable on site.

Available options:

157"

393"

+ **Single canopy with built-in phasecut driver.** Recommended.

Ø7" X H2"



MATCHING FINISH

PHASECUT

+ **Single canopy with built-in driver and alternative dimmable standards,** if required by electrician.

Ø7" X H2"



MATCHING FINISH

1-10 VOLT

Gem Chandelier Ring 20

GMCHR20

 IP20

Materials

Hand blown corroded borosilicate glass and hand finished or electroplated brass.

Weight incl. canopy

~42 lbs

Power Input

110-120V 50-60Hz

Light Source (included)

20 Proprietary Gem LEDs.
44W, 4140 Lumens, 2700K warm white. CRI>95.

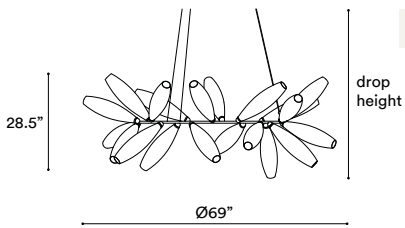


GEM CHANDELIER RING 20

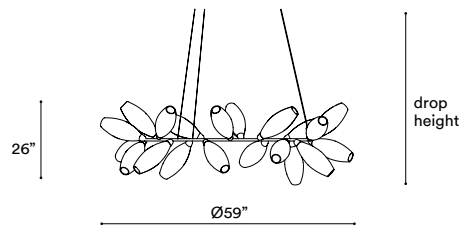
CONFIGURATION

STEP 1 - CHOOSE YOUR SIZE

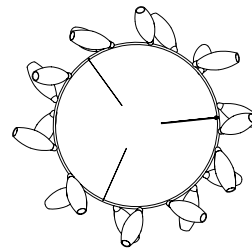
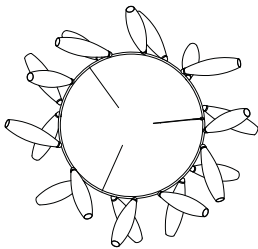
SIZE (UNIT: IN)



RING 20

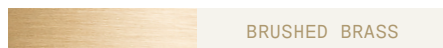


RING 20 SMALL



STEP 2 - CHOOSE YOUR METAL FINISH

METAL FINISH



BRUSHED BRASS



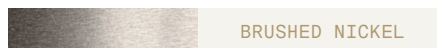
BLACKENED BRASS



POLISHED NICKEL



BRUSHED BRONZE



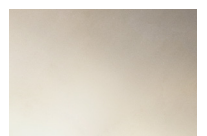
BRUSHED NICKEL

STEP 3 - CHOOSE YOUR GLASS FINISH

GLASS



CORRODED



MIST

Steel Wire and Flex Cable
Suspension, adjustable on site.

Available options:

157"

393"

+ **Single canopy with built-in phasecut driver.** Recommended.

Ø12" X H2"



MATCHING FINISH

PHASECUT

+ **Single canopy with built-in driver and alternative dimmable standards,** if required by electrician.

Ø12" X H2"



MATCHING FINISH

1-10 VOLT

Brushed Brass

Brass hand finished with horizontal brushing. Protected with a semi-gloss transparent coating.

Brushed Bronze

Brass with accelerated aging to become a bronze finish. Hand finished with horizontal brushing. Protected with a semi-matt transparent coating.

Blackened Brass

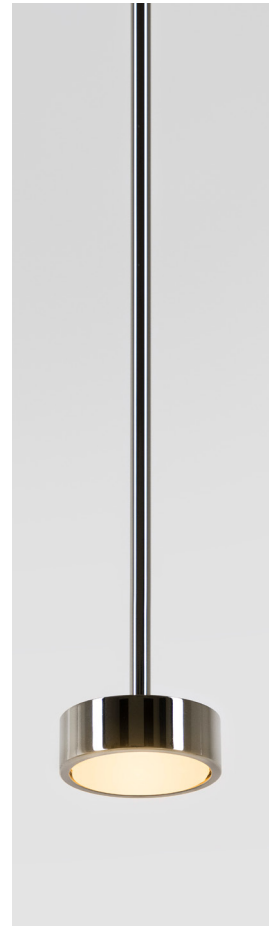
Brass with accelerated aging to become an extra dark chocolate finish. Hand finished with horizontal brushing. Protected with a semi-matt transparent coating.

Brushed Nickel

Electroplated nickel over Brass with horizontal brushing. Protected with a semi-gloss transparent coating.

Polished Nickel

Electroplated Nickel over polished brass. Protected with a semi-gloss transparent coating.



Custom Finish

Our products can be customized with most metal finishes, please check with our design advisors if you have any particular requirement.

Please advise if our products are to be installed close to air conditioning vents or in windy or salty air conditions.