

Flauti Pendant

FLPE

 IP20

Materials

Hand blown Murano glass and hand finished or electroplated brass.

Weight incl. canopy

~3.5 lbs

Power Input

110-120V 50-60Hz

Light Source (included)

Proprietary Softspot75 LED,
9W, 380 Lumens, 2700K warm white. CRI>95.
75% downwards and 25% upwards



FLAUTI PENDANT 01

CONFIGURATION

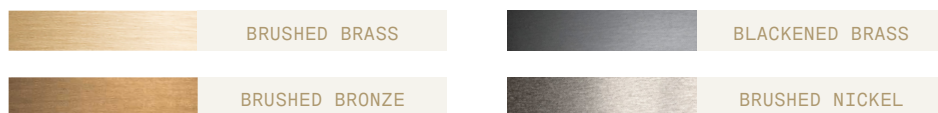
STEP 1 - CHOOSE MODEL

MODEL (UNIT: IN)

Model	Min. Drop Height	Materials	Width
01 AMETHYST	25"	Amethyst dome, Amethyst bead, Coral filigree pebble, Amethyst olive, Amber rigadin storto batton.	6.5"
02 AMETHYST	27.5"	Amethyst capsule with balloton, Grey pyramid with bollicine, Aquamarine batton.	5"
45 ROSE	25"	Rose dome, Grey bead, Amber olive, Grey rigadin storto batton.	6.5"
06 ROSE	27.5"	Rose balloton capsule, Grey bollicine pyramid, Amethyst bead.	5"
07 CRYSTAL	25"	Crystal balloton dome, Amethyst bead, Grey pebble, Rose rigadin storto batton.	6.5"
08 GREY	25"	Grey dome, Grey bollicine pyramid, Rose bead, Grey rigadin storto batton.	6.5"
10 AMBER	28.5"	Amber cappe bell, Green bead, Green disc, Amber olive, Aquamarine batton.	5.5"
11 GREEN	25"	Green dome, Blue pyramid, Green bead, Aquamarine batton.	6.5"
12 AQUAMARINE	25"	Aquamarine balloton dome, Aquamarine pebble, Grey olive, Aquamarine batton.	6.5"
30 AMBER	28.5"	Amber cappe bell, Green disc, Amber olive, Amethyst batton.	5.5"

STEP 2 - CHOOSE YOUR METAL FINISH

METAL FINISH



STEP 3 - CHOOSE YOUR SUSPENSION TYPE

SUSPENSION TYPE



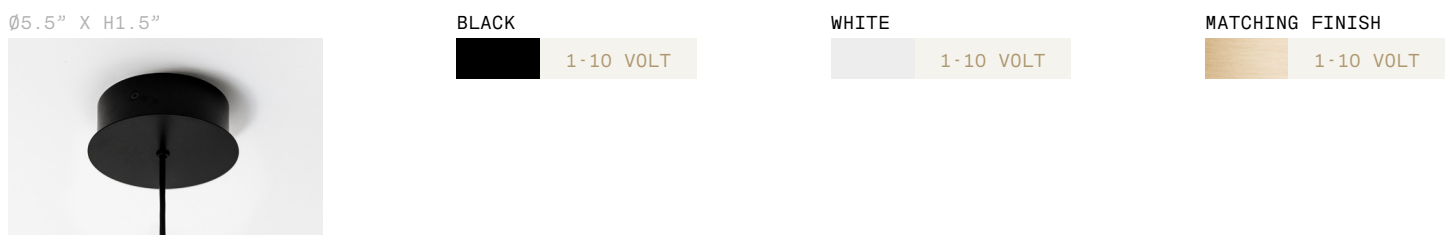
STEP 4 - CHOOSE YOUR CANOPY AND DRIVER

CANOPY + DRIVER

+ Single canopy with built-in phasecut driver. Recommended.



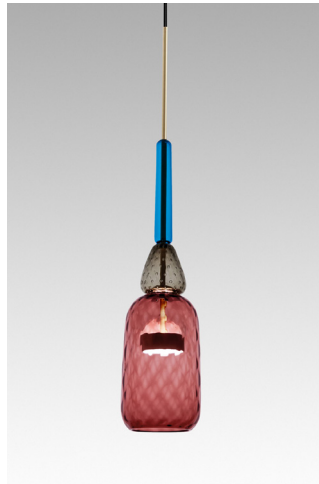
+ Single canopy with built-in driver and alternative dimmable standards, if required by electrician.



ALL FLAUTI PENDANTS



FLAUTI PENDANT 01



FLAUTI PENDANT 02



FLAUTI PENDANT 45



FLAUTI PENDANT 06



FLAUTI PENDANT 07



FLAUTI PENDANT 08



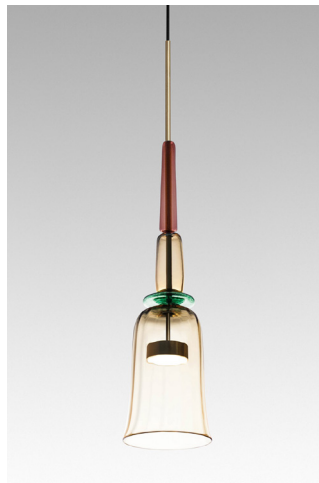
FLAUTI PENDANT 10



FLAUTI PENDANT 11



FLAUTI PENDANT 12



FLAUTI PENDANT 30

Brushed Brass

Brass hand finished with horizontal brushing. Protected with a semi-gloss transparent coating.

Brushed Bronze

Brass with accelerated aging to become a bronze finish. Hand finished with horizontal brushing. Protected with a semi-matt transparent coating.

Blackened Brass

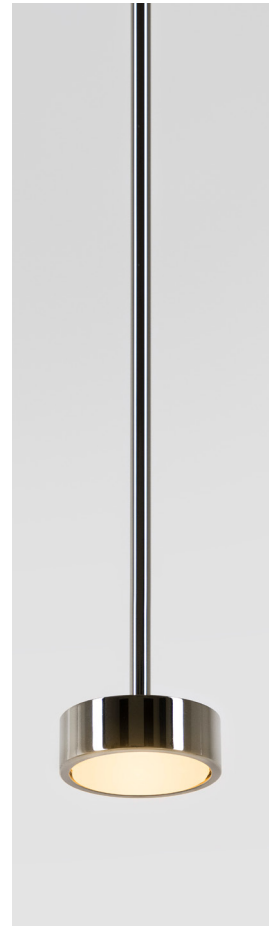
Brass with accelerated aging to become an extra dark chocolate finish. Hand finished with horizontal brushing. Protected with a semi-matt transparent coating.

Brushed Nickel

Electroplated nickel over Brass with horizontal brushing. Protected with a semi-gloss transparent coating.

Polished Nickel

Electroplated Nickel over polished brass. Protected with a semi-gloss transparent coating.



Custom Finish

Our products can be customized with most metal finishes, please check with our design advisors if you have any particular requirement.

Please advise if our products are to be installed close to air conditioning vents or in windy or salty air conditions.