

CATEGORY A / ASCENDENT

A natural, timeless fabric that adds a living touch to any private or commercial interior. 45% cotton, 19% viscose, 15% wool, 13% polyacrylic, 8% polyamide. Martindale: 60000



020



021



022



031



050



051



060



070



071



072



090



091



093

CATEGORY A / REYKJAVIK

Live and wild. Created with care to an environment. Suitable for wabi-sabi interiors and people who appreciate authentic beauty. 55% cotton, 27% viscose, 15% polyester, 3% linen. Martindale: 30000



070



091



092

CATEGORY B / RENARD

A modern version of cotton velvet with a durable coating. A refined matte surface accents the beauty of shapes. Suitable for premium class interiors with a chic vibe or for other styles where furniture is a center of regard.

80% cotton, 10% modal, 10% polyester. Martindale: 50000



01



15



19



22



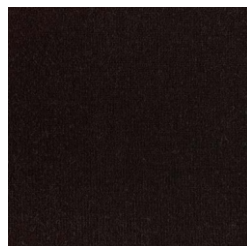
23



26



32



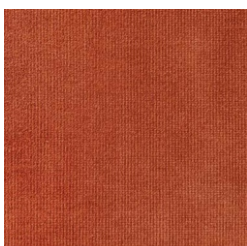
36



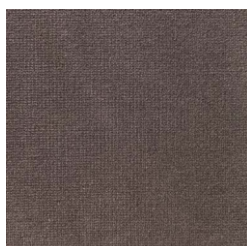
41



54



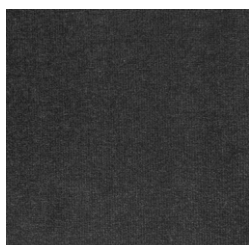
64



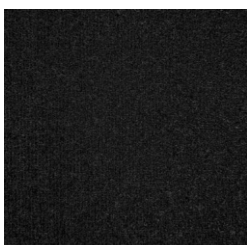
65



71



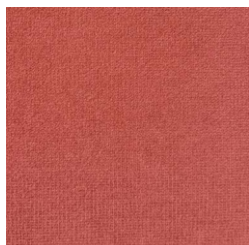
76



80



88



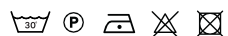
90



98

CATEGORY B / BOUGANVILLE

Live, tactile, soft to the touch fabric. Presented in a silent colour palette, each with a rich texture, it provides an owner with a sense of quality living. 63% cotton, 10% polyester, 7% linen, 20% viscose. Martindale: 35000



1



3



4



5



7



8



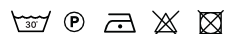
20



21

CATEGORY B / FEIJOCA

A live and tactile fabric. One of the softest in FAINA's line, it features a fluffy texture and engages to touch. Recommended for use in private interiors. 56% cotton, 27% polyester, 16% wool, 1% silk. Martindale: 35000



1



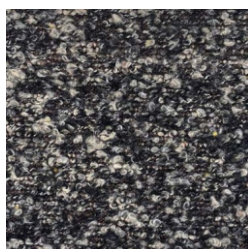
2



3



5



20



21

CATEGORY B / PETUNIA

Live and thoughtful fabric. For people who desire uncompromised quality — visually and sensually. Recommended for private and commercial interiors. 99% cotton, 1% polyamide. Martindale: 35000



2



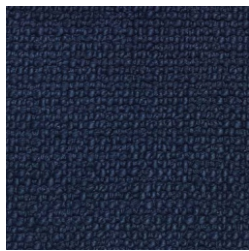
3



4



5



6



9

CATEGORY B / SAMOS

Live and sensuous. This fabric bestows a cloud-like, soft and natural feel. Recommended for soft seating — at homes or small public areas. 52% cotton, 27% viscose, 21% polyester. Martindale: 80000



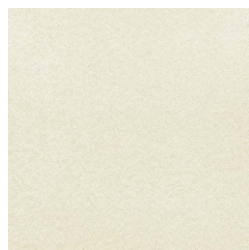
01



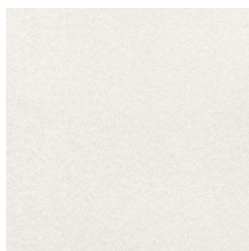
02



03



06



07



16

CATEGORY C / LUCREZIA

Live and soulful. This fabric has powerful energy and a special natural feel that brings a living spirit to every interior. Cool properties make it most suitable for warm regions. 44% viscose, 28% cotton, 15% linen, 13% polyester. Martindale: 37000



02



03



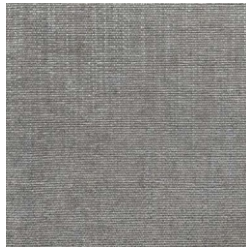
05



09



12



14



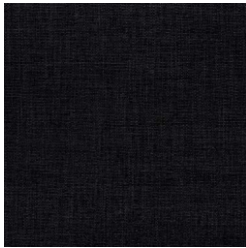
19



26



28



31



34



35



42

CATEGORY D / WOOL

Live and sincere — this fabric is a bestseller in FAINA palette. Wool beautifully ages. Naturally flame retardant. Dirt-resistant and durable, famous for its versatile use. High thermal conductivity makes it ideal to preserve the warmth of a home. 70% wool, 20% polyester, 5% nylon, 5% other fibres. Light resistance 4-5. Martindale: 100000.



02



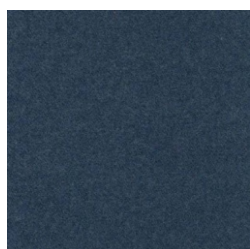
03



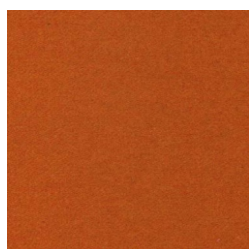
04



08



14



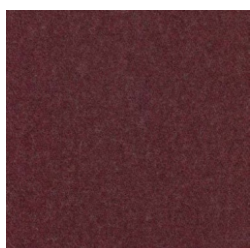
15



16



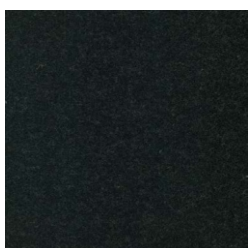
17



19



22



23



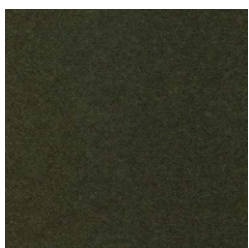
24



26



29



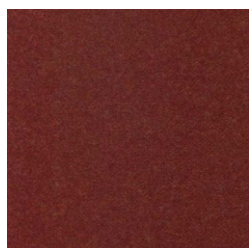
31



32



33



34



42

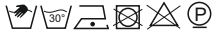


47

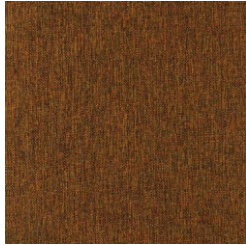
CATEGORY H / ANGEL

Smart fabric. A reliable choice for contract spaces, residential spaces with pets, medical fields. Easy to maintain and hardwearing. Flame retardant, does not need protective finishes. Can be washed and disinfected.

100% polyester. Martindale: 100000. Colorfastness to light 5/6, ISO 105 B02. Pilling 5, ISO 12945-2. Fire resistance 11M - UNI 9175; EN 1021 part 1/2. BS 5852 crib 5; California TB 117:2013; IMO MED - Ftp 307 part 8.



800



501



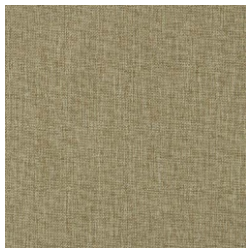
300



700



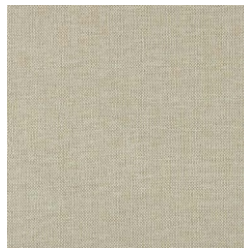
302



402



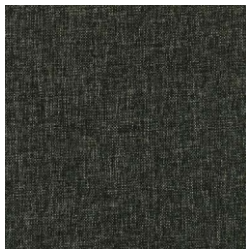
401



400



701

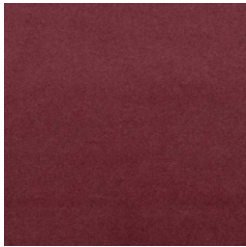
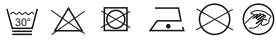


201

CATEGORY H / FORRES

Smart fabric. A reliable choice for contract spaces, residential spaces with pets, medical fields. Easy to maintain and hardwearing. Flame retardant, does not need protective finishes. Can be washed and disinfected.

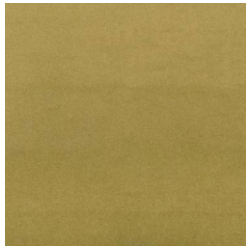
100% polyester. Martindale: 60000. Colorfastness to light: 5/6, ISO 105 B02. Pilling 4/5, ISO 12945-2. Fire resistance BS 5852: Part 1: 1979, source 0 (cigarette)



05



06



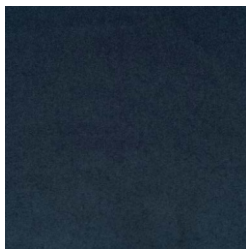
07



08



10



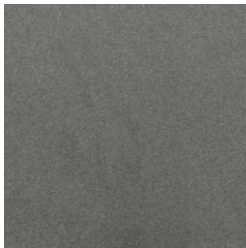
15



17



20



21



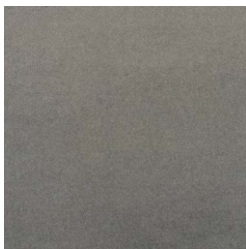
22



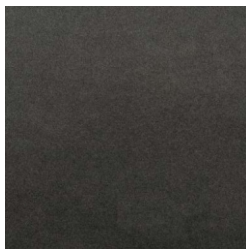
24



26



27



28