

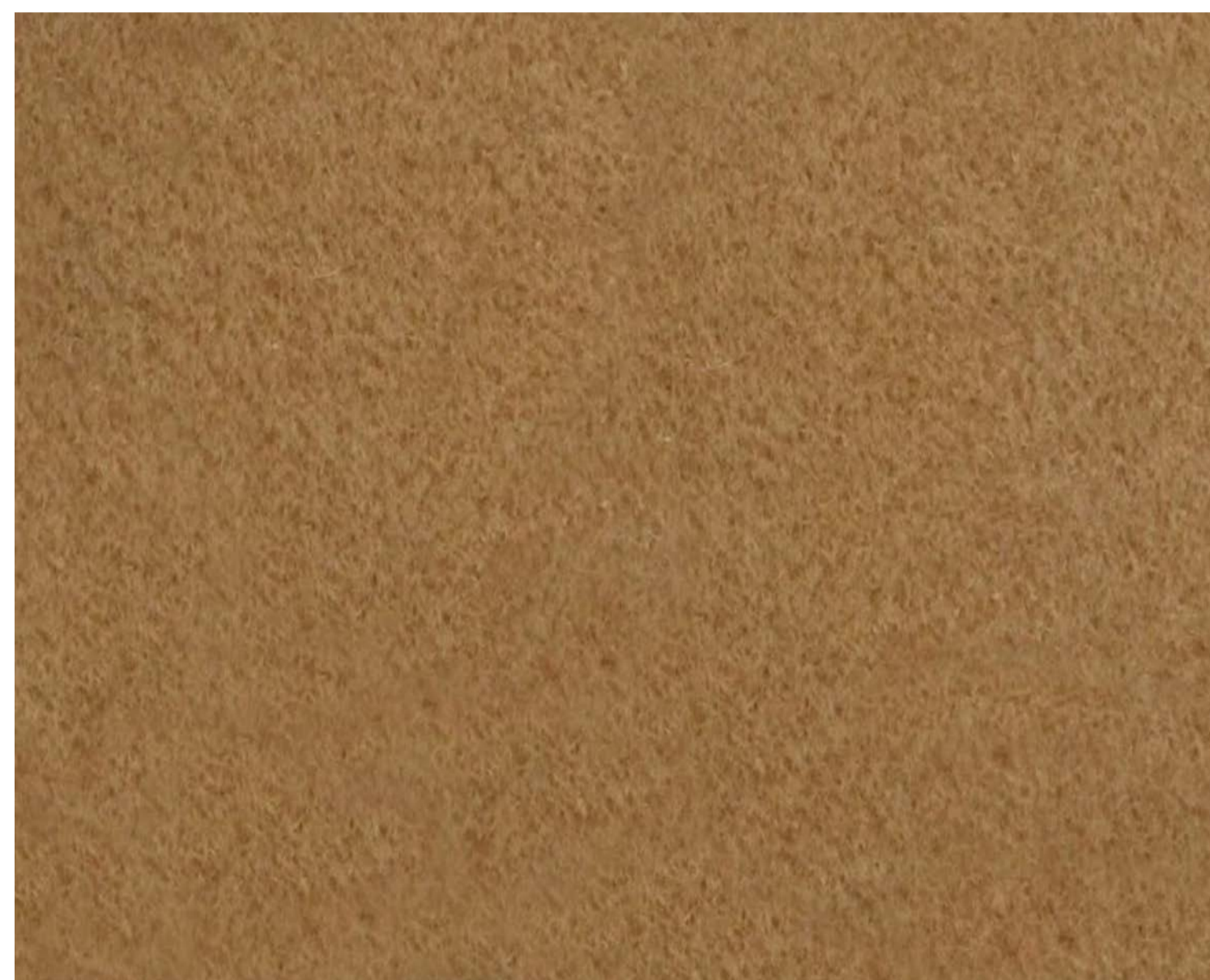


**PIERRE\_AUGUSTIN\_ROSE**  
**FABRIC SELECTION 2026**

# PIERRE FREY TEDDY MOHAIR



Vendôme armchair - [Link](#)



Teddy Mohair - [Link](#)



Width: 141 cm / 55.51 inch

**F2500002 - MIEL**  
PIERRE FREY - UNIS INTEMPORELS

<b>PERFORMANCE</b>	High Rub Test
<b>TYPE</b>	Plains velvet
<b>USE</b>	Intensive use
<b>MARTIN DALE</b>	85.000T
<b>COMPOSITION</b>	65% Mohair - 35% Cotton
<b>SALES UNIT</b>	Available per meter/yard
<b>WIDTH</b>	141 cm/55,51 inch
<b>WEIGHT</b>	1270 gr/ml
<b>CARE</b>	

**CERTIFICATIONS**

BS5852 Cigarette & match test  
CAL TP 117-Pass  
EN1021-1-2  
CLASSE UNO  
NFPA 260-Class 1  
CRIB 5

# COLORS

## TEDDY MOHAIR



F2500001  
Ivoire



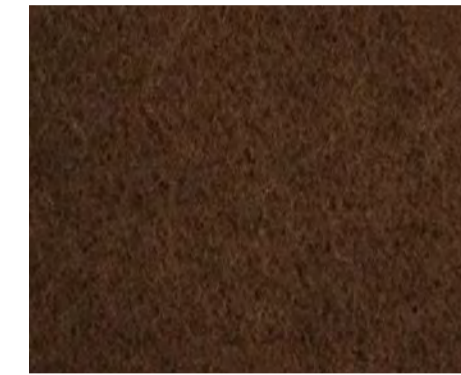
F2500002  
Crème



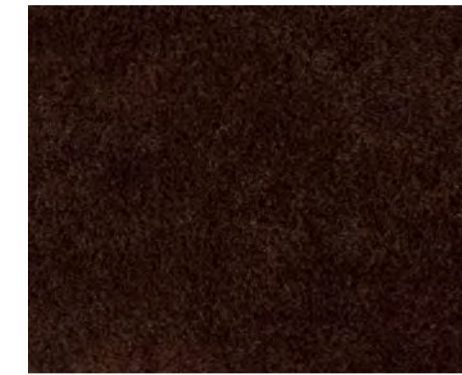
F2500003  
Miel



F2500004  
Taupe



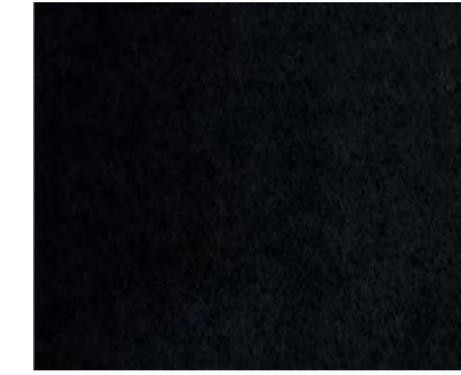
F2500005  
Moka



F2500006  
Café



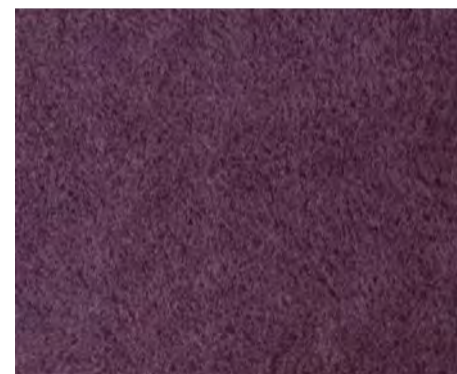
F2500007  
Gris souris



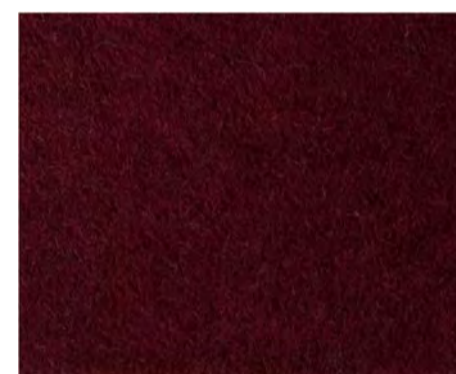
F2500008  
Noir



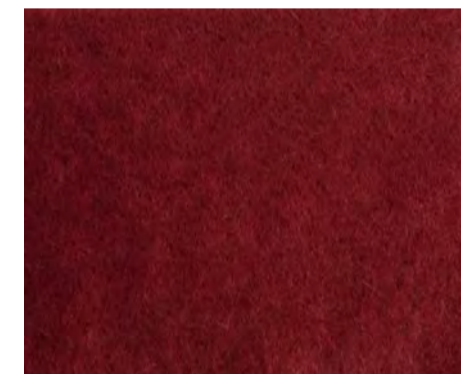
F2500009  
Marine



F2500010  
Amethyste



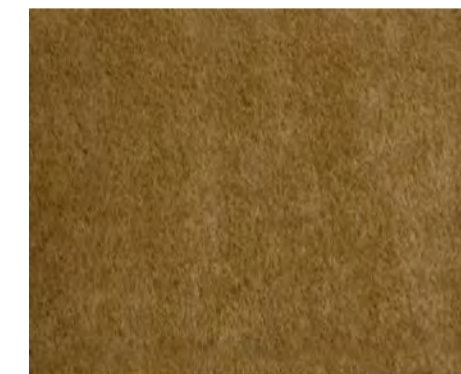
F2500011  
Bordeaux



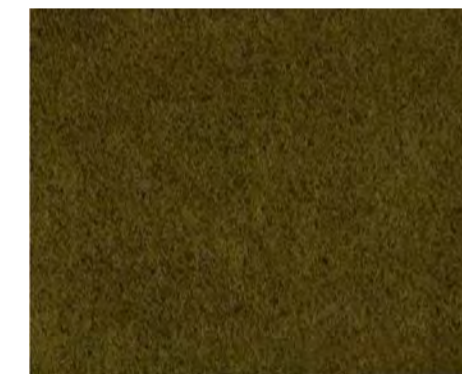
F2500012  
Cardinal



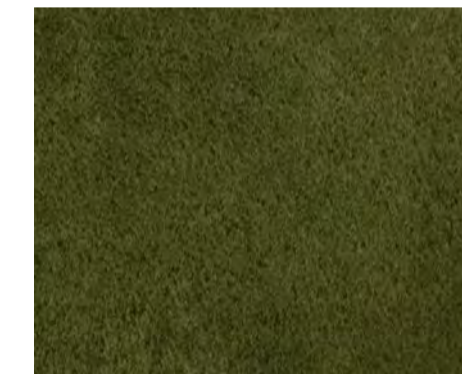
F2500013  
Acajou



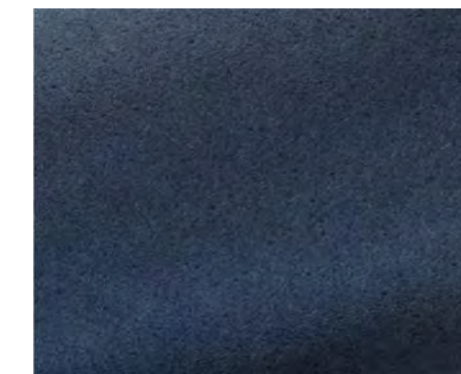
F2500015  
Moutarde



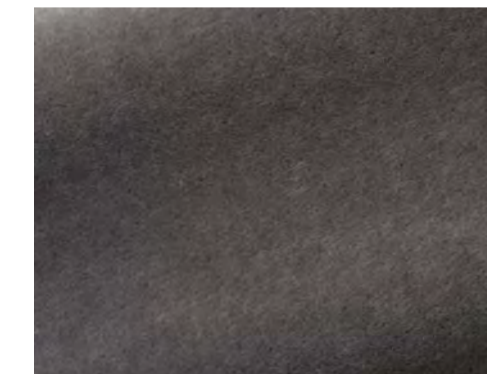
F2500016  
Olive



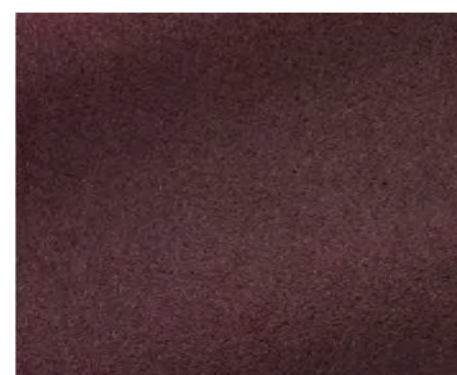
F2500017  
Mousse



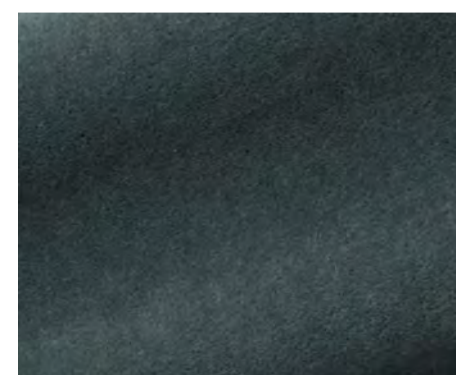
F2500018  
Orage



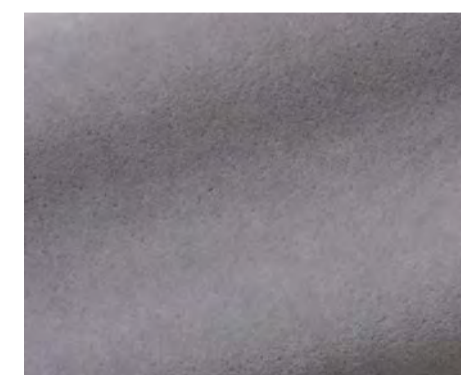
F2500019  
Éléphant



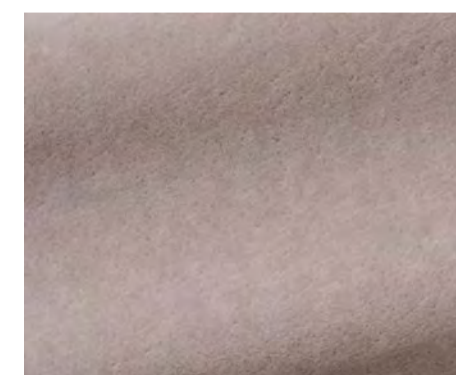
F2500020  
Aubergine



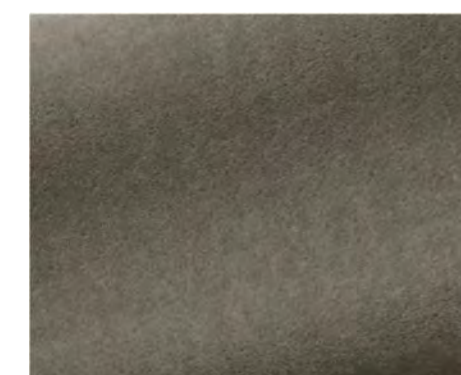
F2500021  
Cyclone



F2500022  
Tourtelle



F2500023  
Plume



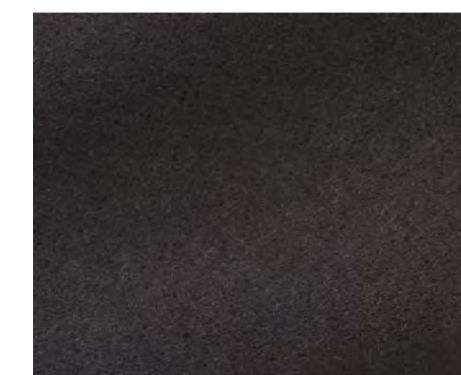
F2500024  
Écorce



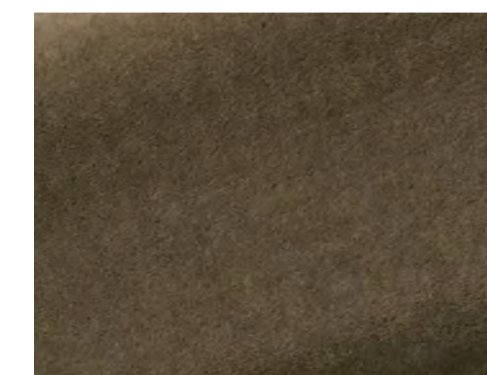
F2500025  
Nacre



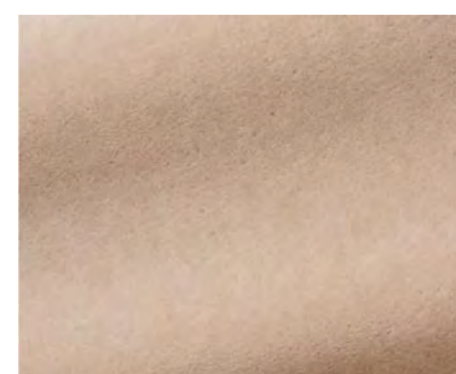
F2500026  
Sable



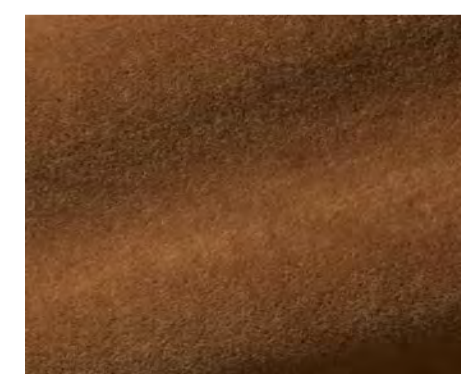
F2500027  
Choco



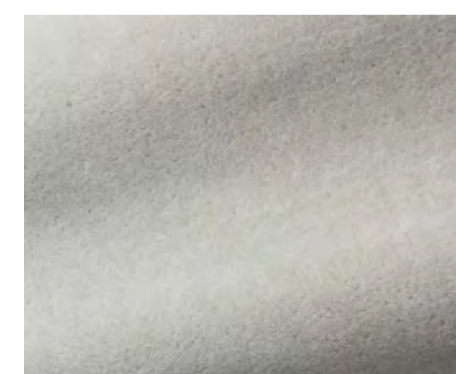
F2500028  
Hérisson



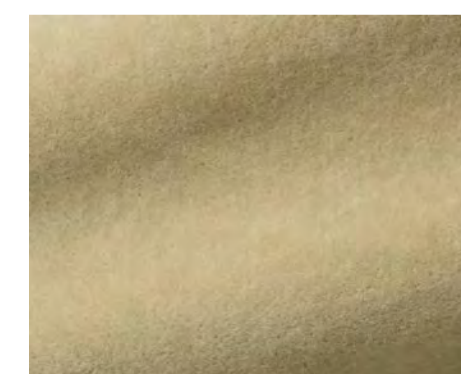
F2500029  
Dune



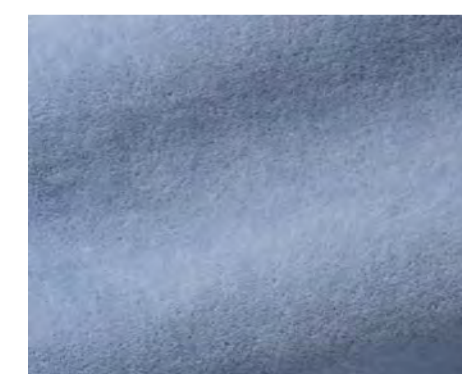
F2500030  
Caramel



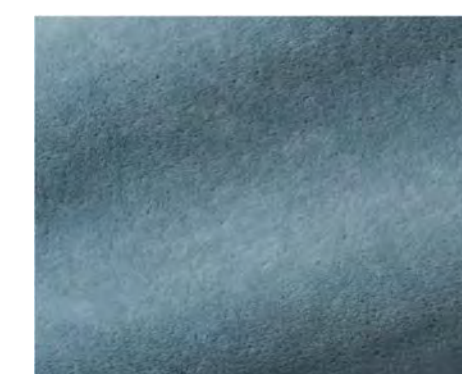
F2500031  
Perle



F2500032  
Graminées



F2500033  
Ciel



F2500034  
Céladon



F2500035  
Bambi

# PIERRE FREY ANGKOR



Angkor - Link

← Width: 143 cm / 56.3 inch →

## F3521004 - SABLE

PIERRE FREY - UNIS INTEMPORELS

<b>PERFORMANCE</b>	High Rub Test
<b>TYPE</b>	Plains
<b>USE</b>	Intensive use
<b>MARTIN DALE</b>	80.000T
<b>COMPOSITION</b>	53% Viscose - 19% Cotton - 13% Acrylic - 11% Linen - 3% Silk - 1% Nylon
<b>SALES UNIT</b>	Available per meter/yard
<b>WIDTH</b>	143 cm/56.3 inch
<b>WEIGHT</b>	1088 gr/ml
<b>CARE</b>	
<b>CERTIFICATIONS</b>	BS5852 Cigarette & match test EN1021-1-2 in conjunction with suitable combustion modified foam NFPA 260-Class 1

# COLORS ANGKOR



F3521001  
Chaux



F3521002  
Calcaire



F3521004  
Sable



F3521005  
Chamois



F3521006  
Acajou



F3521008  
Brume



F3521011  
Atlantique



F3521012  
Horizon



F3521013  
Sauge



F3521014  
Celadon



F3521015  
Émeraude



F3521016  
Flandres



F3521017  
Mousse



F3521019  
Miel



F3521020  
Sanguine



F3521021  
Précieux



F3521022  
Bonbon



F3521023  
Poudre

# PIERRE FREY ARSÈNE



Arsène - Link

Width: 140 cm / 55.11 inch

**F3371014 - PAVOT**  
PIERRE FREY - TRIBU

<b>PERFORMANCE</b>	High Rub Test
<b>TYPE</b>	Fibres douces - Semi plains
<b>USE</b>	Intensive use
<b>MARTIN DALE</b>	90.000T
<b>COMPOSITION</b>	42% Viscose - 34% Linen - 20% Acrylic - 2% Polyester - 2% Polyamide
<b>SALES UNIT</b>	Available per meter/yard
<b>WIDTH</b>	140 cm/55.11 inch
<b>WEIGHT</b>	952 gr/ml
<b>CARE</b>	

**CERTIFICATIONS** BS5852 Cigarette & match test  
EN1021-1-2 in conjunction with  
suitable combustion modified  
foam  
NFPA 260-Class 1

# COLORS ARSÈNE



F3371001  
Coton



F3371002  
Coquillage



F3371003  
Macadamia



F3371004  
Gingembre



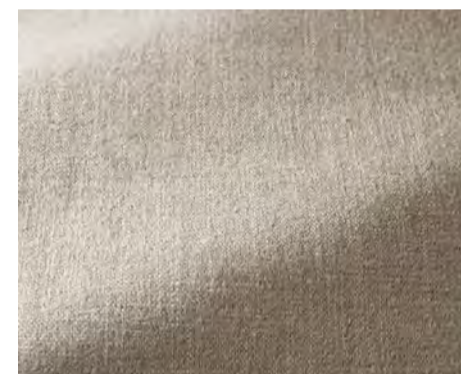
F3371005  
Quinoa



F3371006  
Dune



F3371007  
Plume



F3371008  
Perle



F3371009  
Pigeon



F3371010  
Cachou



F33710011  
Tabac



F3371012  
Terracotta



F3371013  
Marrakech



F3371014  
Pavot



F3371015  
Sangria



F3371016  
Figue



F3371017  
Fuchsia



F3371018  
Nuage



F33710019  
Céleste



F3371020  
Marine



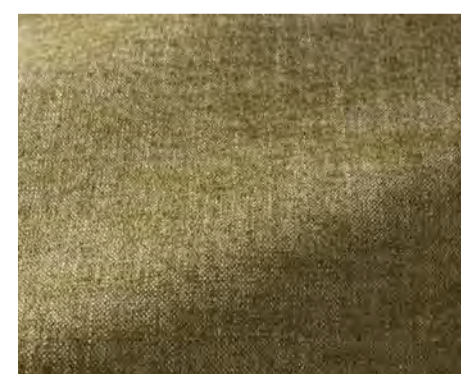
F3371021  
Neptune



F3371022  
Turquoise



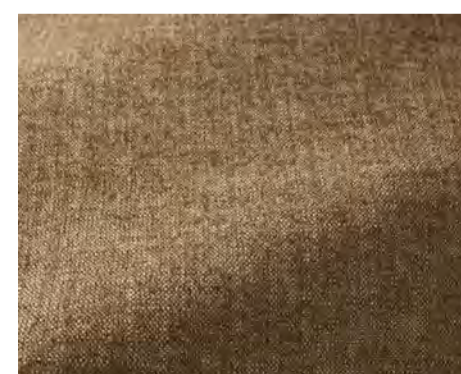
F3371023  
Emeraude



F3371024  
Asperge



F3371025  
Cactus



F3371026  
Ocre



F33710027  
Miel



F3371028  
Poussin

# PIERRE FREY OPIO



Opio - Link

Width: 128 cm/ 50,39 inch

**16616001 - NATUREL**  
FADINI BORGHI - MAHARANI

<b>TYPE</b>	Bouclé fabrics - Fibres douces - Plains
<b>USE</b>	Moderate use
<b>MARTIN DALE</b>	25.000 T
<b>COMPOSITION</b>	37% Wool - 23% Mohair - 23% Alpaca - 12% Cotton - 5% Polyamide
<b>SALES UNIT</b>	Available per meter/yard
<b>WIDTH</b>	128 cm/50,39 inch
<b>WEIGHT</b>	1011 gr/ml
<b>CARE</b>	

**CERTIFICATIONS** BSS852 Cigarette & match test  
EN1021-I -2 in conjunction with  
suitable combustion modified  
foam  
NFPA 260-Class I

# COLORS OPIO



16616001  
Naturel



16616002  
Ciottolo



16616003  
Orzo



16616004  
Pesca



16616005  
Ambra



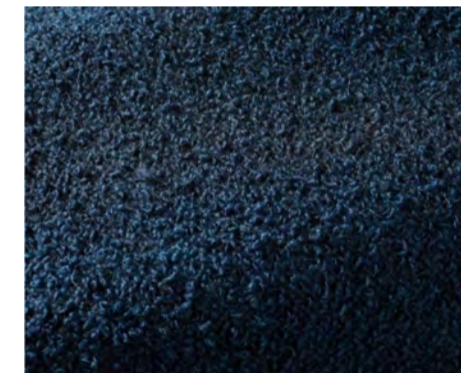
16616006  
Terracotta



16616007  
Azalea



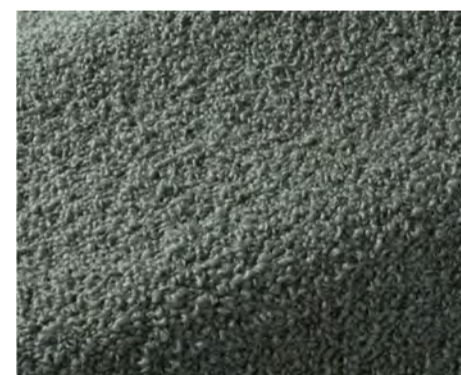
16616008  
Porpora



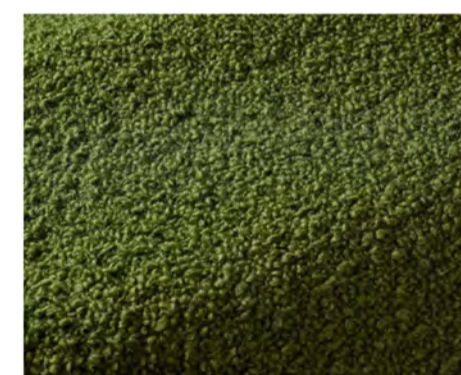
16616009  
Indaco



16616010  
Prussiana



16616011  
Eucalipto



16616012  
Erba



16616013  
Kiwi

# PIERRE FREY PYLA



Pyla - Link

← Width: 140 cm/55.11 inch →

**F3637001 - NATUREL**  
PIERRE FREY - UNIS INTEMPORELS

<b>PERFORMANCE</b>	High Rub Test
<b>TYPE</b>	Fibres douces - Semi plains
<b>USE</b>	Intensive use
<b>MARTIN DALE</b>	80.000T
<b>COMPOSITION</b>	81% Cotton - 15% Viscose - 2% Polyamide - 2% Acrylic
<b>SALES UNIT</b>	Available per meter/yard
<b>WIDTH</b>	140 cm/55.11 inch
<b>WEIGHT</b>	1344 gr/ml
<b>CARE</b>	

# COLORS PYLA



F3637001  
Naturel



F3637002  
Litchi



F3637003  
Houpette



F3637004  
Rosee



F3637005  
Papaye



F3637006  
Pavot



F3637007  
Pastèque



F3637008  
Fraise



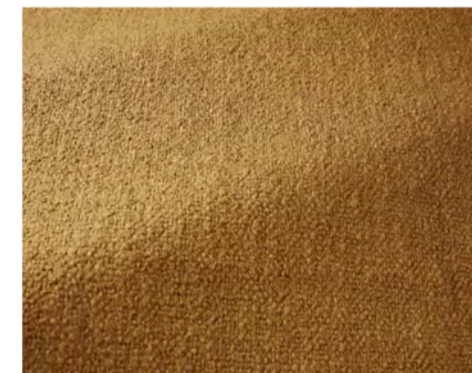
F3637009  
Ambre



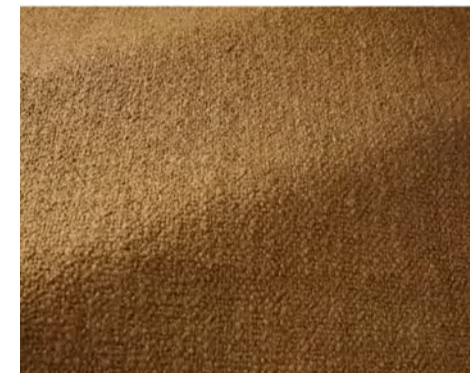
F3637010  
Chasselas



F3637011  
Poussin



F3637012  
Curcuma



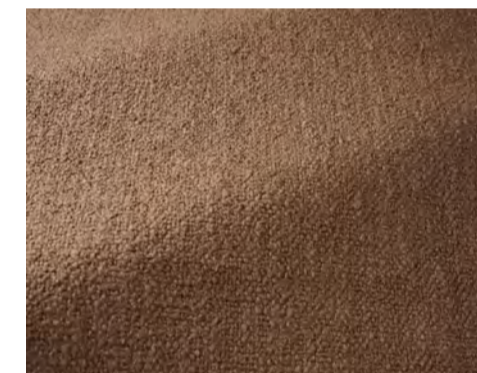
F3637013  
Muscade



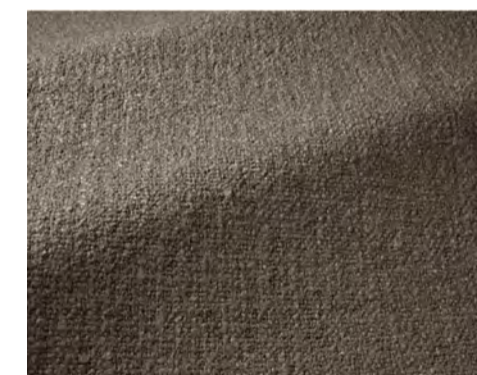
F3637014  
Orge



F3637015  
Foin



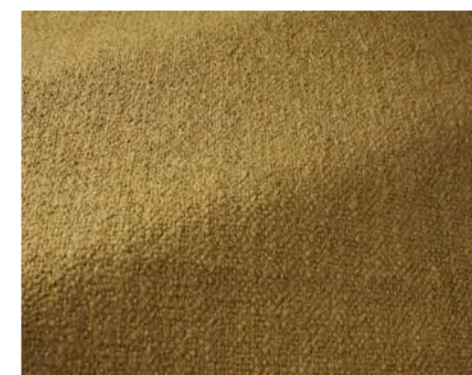
F3637016  
Castor



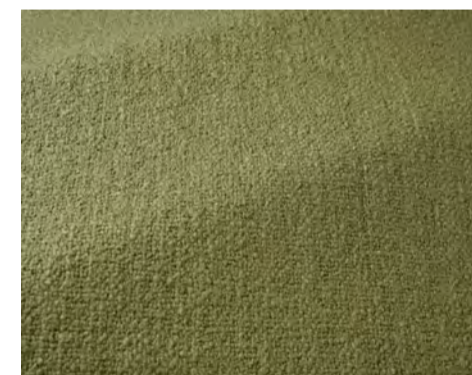
F3637017  
Poivre



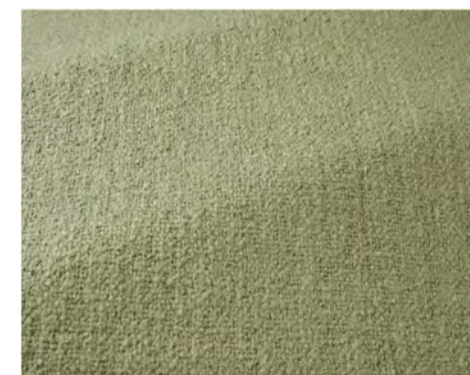
F3637018  
Roseau



F3637019  
Curry



F3637020  
Prairie



F3637021  
Chartreuse



F3637022  
Jade



F3637023  
Cristal



F3637024  
Agapanthe



F3637025  
Matelot



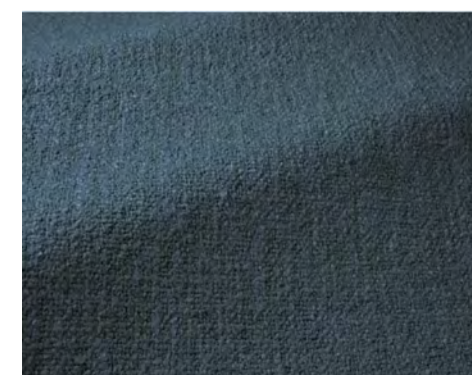
F3637026  
Fontaine



F3637027  
Lagon



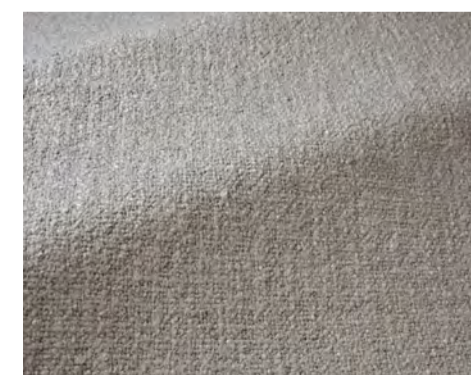
F3637028  
Canard



F3637029  
Celadon



F3637030  
Ardoise



F3637032  
Lin

# PIERRE FREY CHENILLE IGOR



Sofa 190 - Link



Chenille Igor - Link



Width: 134 cm/2,75 inch

**F3635001 - NEIGE**  
PIERRE FREY - UNIS INTEMPORELS

<b>PERFORMANCE</b>	High Rub Test
<b>TYPE</b>	Chenille - Fibres douces - Plains
<b>USE</b>	Normal use
<b>MARTIN DALE</b>	45.000 T
<b>COMPOSITION</b>	84% Coton - 7% Acrylic - 5% Virgin wool - 2% Polyamide - 2% Alpaca
<b>SALES UNIT</b>	Available per meter/yard
<b>WIDTH</b>	134 cm/2,75 inch
<b>WEIGHT</b>	984 gr/ml
<b>CARE</b>	

**CERTIFICATIONS**

B5S852 Cigarette & match test in conjunction with suitable combustion modified foam

EN1021-1-2 in conjunction with suitable combustion modified foam

# COLORS

## CHENILLE IGOR



F3635001  
Neige



F3635002  
Coton



F3635003  
Nuage



F3635004  
Sable



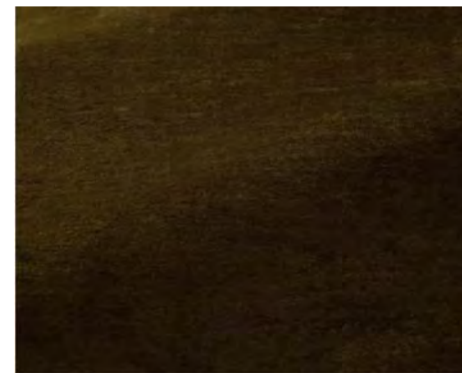
F3635005  
Chamois



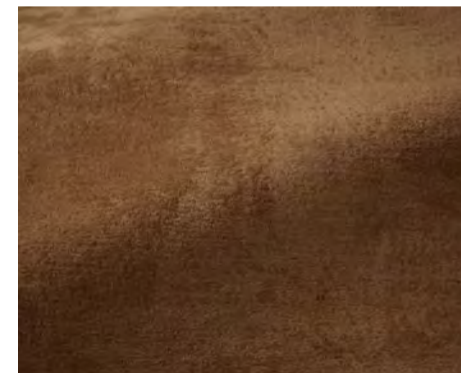
F3635006  
Ourson



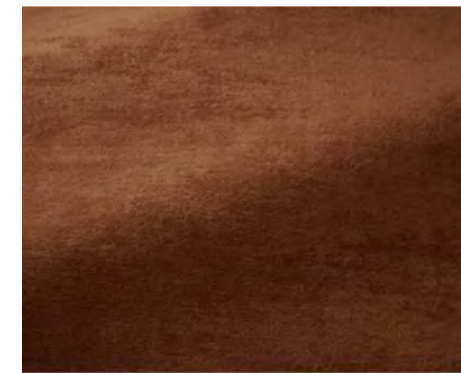
F3635007  
Terre



F3635008  
Caramel



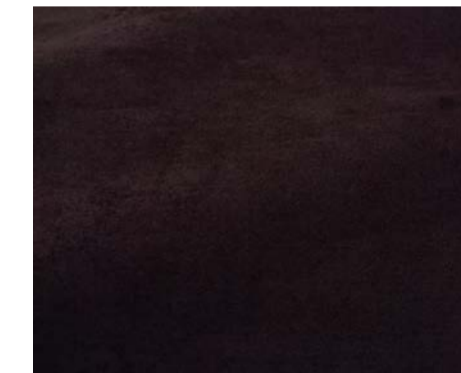
F3635009  
Tangerine



F3635010  
Roux



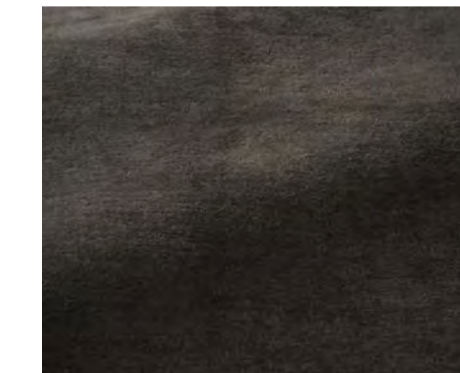
F3635011  
Clematite



F3635012  
Aubergine



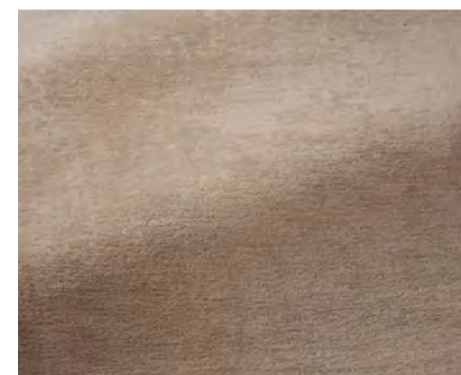
F3635013  
Suie



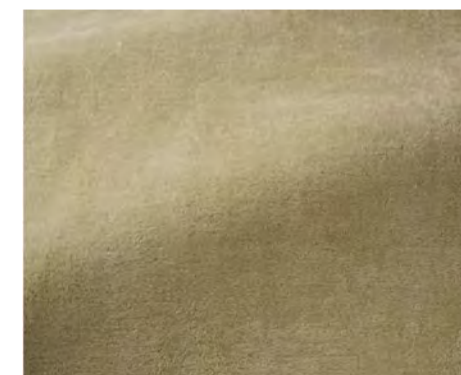
F3635014  
Ardoise



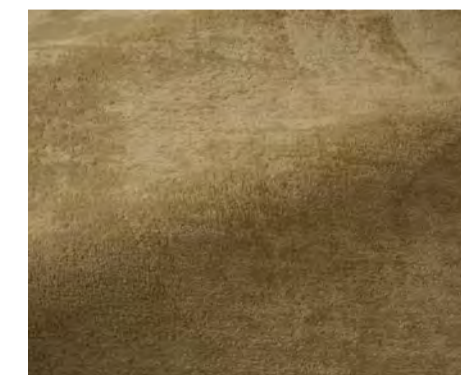
F3635015  
Taupe



F3635016  
Poudre



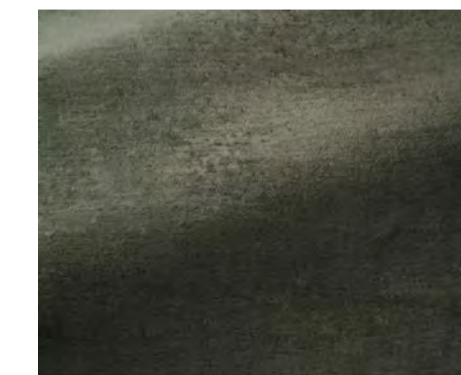
F3635017  
Tilleul



F3635018  
Paille



F3635019  
Olive



F3635020  
Lichen



F3635021  
Menthe



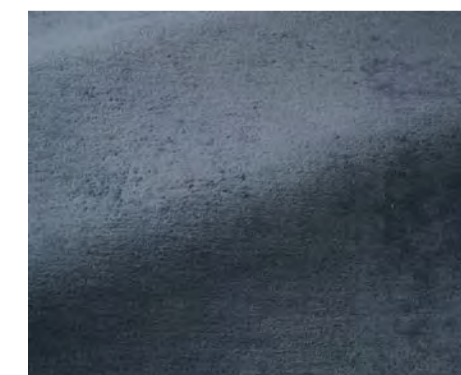
F3635022  
Celadon



F3635023  
Glacier



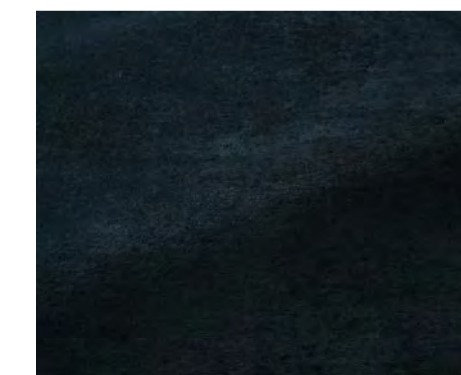
F3635024  
Bleuet



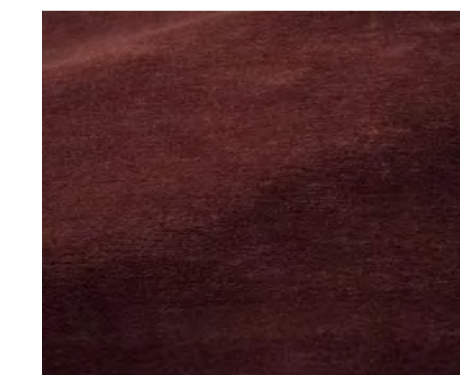
F3635025  
Ciel



F3635026  
Orage



F3635027  
Nuit



F3635028  
Cerise

# PIERRE FREY ESTEBAN



Esteban - Link

← Width: 138 cm/54,33 inch →

**F3071002 - FICELLE**  
PIERRE FREY - UNIS INTEMPORELS

<b>PERFORMANCE</b>	High Rub Test
<b>TYPE</b>	Plains - Thick textures
<b>USE</b>	Intensive use
<b>MARTIN DALE</b>	50.000 T
<b>COMPOSITION</b>	54 % Acrylic - 28 % Viscose - 18% Polyester
<b>SALES UNIT</b>	Available per meter/yard
<b>WIDTH</b>	138 cm/54,33 inch
<b>WEIGHT</b>	1366 gr/ml
<b>CARE</b>	
<b>CERTIFICATIONS</b>	BS5852 Cigarette test NFPA 260-Class 1 CAL TB 117-Pass

# COLORS ESTEBAN



F3071001  
Meringue



F3071002  
Ficelle



F3071004  
Fusain



F3071005  
Colza



F3071007  
Majorelle



F3071008  
Perruche



F3071011  
Gambas



F3071012  
Biscuit



F3071013  
Greige



F3071014  
Houblon



F3071015  
Tomette



F3071016  
Noix



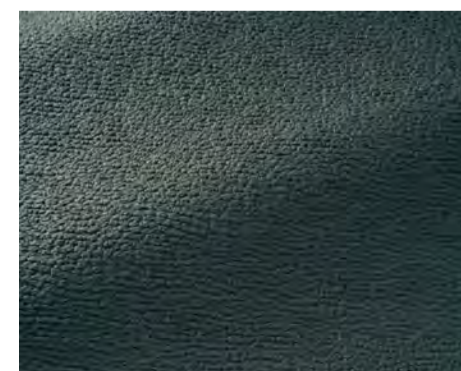
F3071017  
Ocre



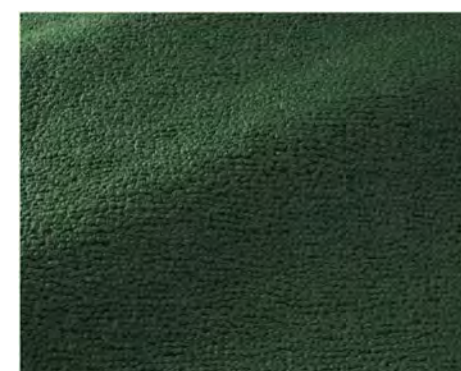
F3071018  
Tournesol



F3071019  
Aqua



F3071020  
Tourmaline



F3071021  
Emeraude



F3071022  
Tilleul

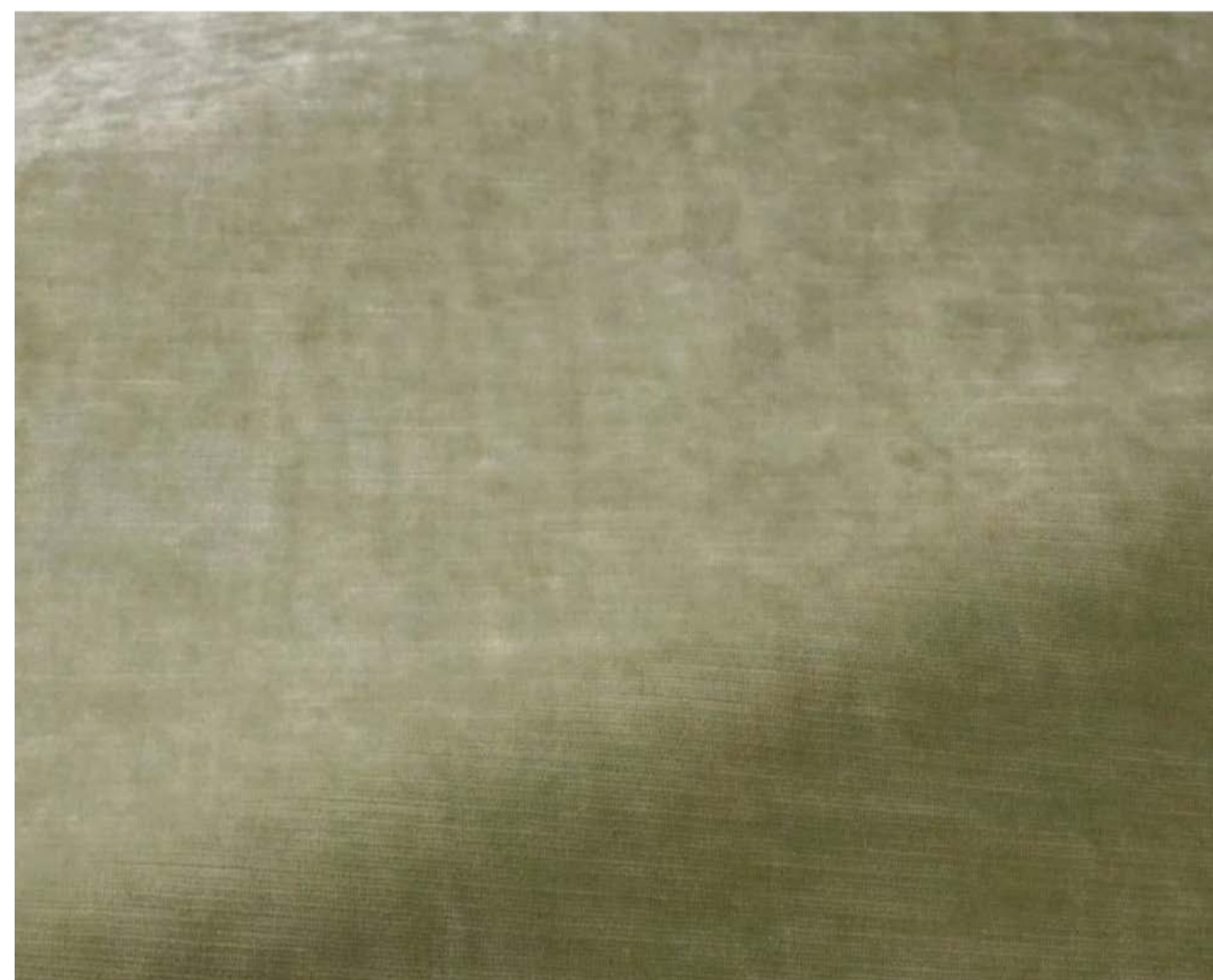


F3071023  
Amande



F3071024  
Olive

# PIERRE FREY CAPRI II



Capri II - Link

Width: 141 cm/55,51 inch

**16615017 - GIADA**  
FADINI BORGHI - MAHARANI

<b>TYPE</b>	Plains - Velvets
<b>USE</b>	Intensive use
<b>MARTIN DALE</b>	>100.000 T
<b>COMPOSITION</b>	100 % Polyester Fire Retardant
<b>SALES UNIT</b>	Available per meter/yard
<b>WIDTH</b>	141 cm/55,51 inch
<b>WEIGHT</b>	634 gr/ml
<b>CARE</b>	

<b>CERTIFICATIONS</b>	NFPA 701 -Pass EN1021-1-2 8S5852 Cigarette & match test Fire retardant Ml CLASSEUNO 8S5867 Curtain NFPA 260-Class 1 CAL TB 117- Pass CRIBS
-----------------------	--

# COLORS CAPRI II



16615001  
Neve



16615002  
Perla



16615003  
Tortora



16615004  
Pepe



16615005  
Delfino



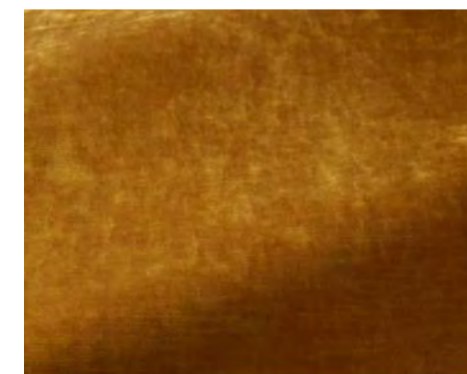
16615006  
Tempesta



16615007  
Cappuccino



16615008  
Avana



16615009  
Senape



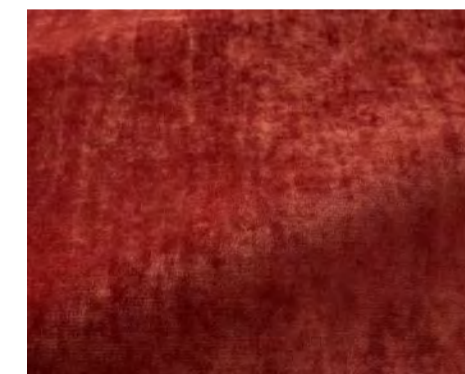
16615010  
Pesca



16615011  
Rosa



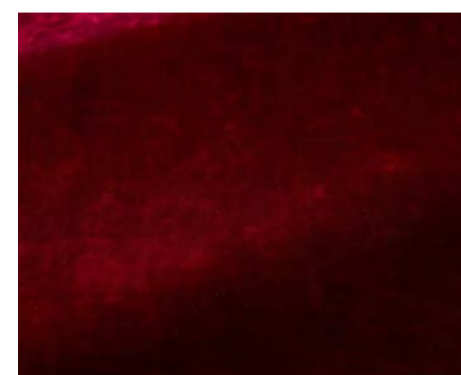
16615012  
Albicocca



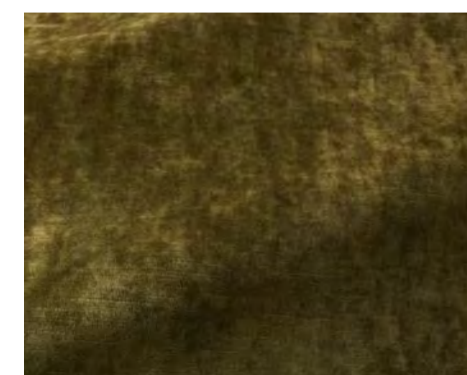
16615013  
Granata



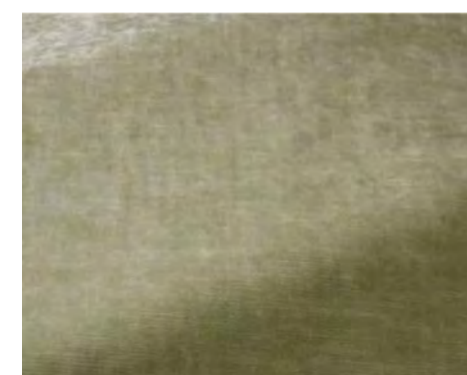
16615014  
Ciliegia



16615015  
Lampone



16615016  
Felce



16615017  
Giada



16615018  
Oliva



16615019  
Smeraldo



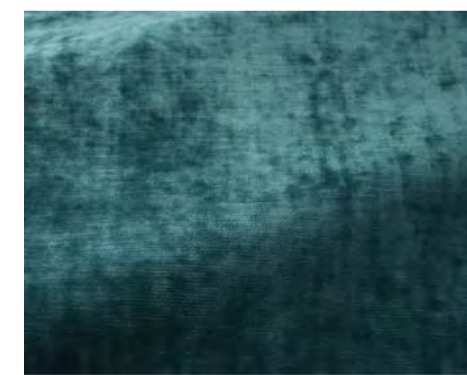
16615020  
Celadon



16615021  
Fontana



16615022  
Nattier



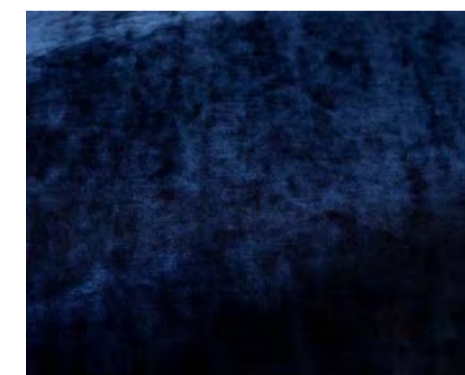
16615023  
Anatra



16615024  
Zaffiro



16615025  
Marinaio



16615026  
Indaco

# PIERRE FREY PALLADIO



Palladio - Link

← Width: 138 cm / 54,33 inch →

## F3871006 - NOISETTE PIERRE FREY - UNIS INTEMPORELS

<b>PERFORMANCE</b>	High Rub Test
<b>TYPE</b>	Chenille - Fibres douces - Jacquards - Plains
<b>USE</b>	Intensive use
<b>MARTIN DALE</b>	80.000 T
<b>COMPOSITION</b>	48 % Polyester - 33 % Cotton - 13 % Viscose - 6 % Linen
<b>SALES UNIT</b>	Available per meter/yard
<b>WIDTH</b>	138 cm / 54,33 inch
<b>WEIGHT</b>	952 gr/ml
<b>CARE</b>	⊗ ⊗ ⊗ ⊗ ⊗

<b>CERTIFICATIONS</b>	EN1021-1-2 in conjunction with suitable combustion modified foam NFPA 260-Class 1 CAL TB 117- Pass
-----------------------	--

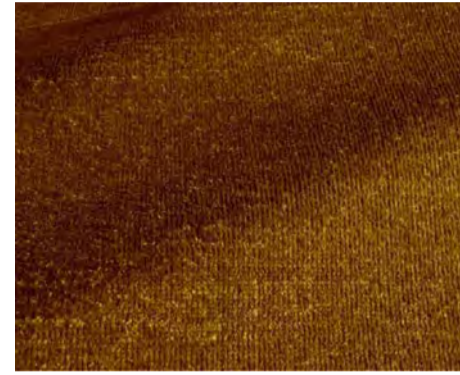
# COLORS PALLADIO



F3871002  
Crème



F3871003  
Gingembre



F3871004  
Mordore



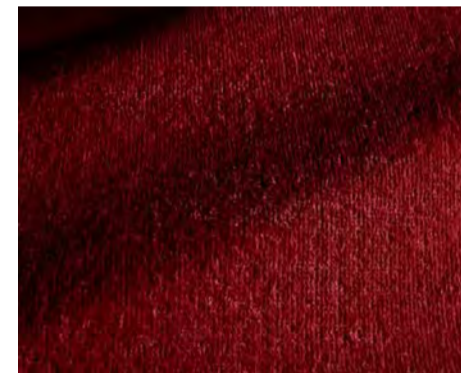
F3871005  
Bistre



F3871006  
Noisette



F3871007  
Brou de noix



F3871008  
Cerise



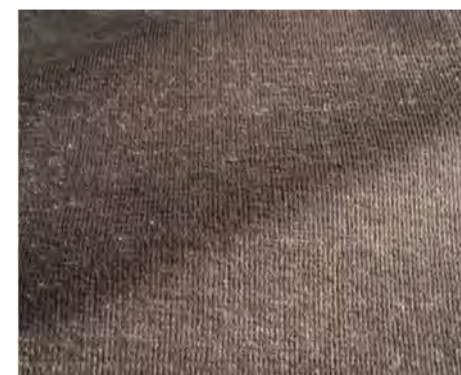
F3871009  
Tomette



F3871010  
Senois



F3871011  
Amarante



F3871012  
Ardoise



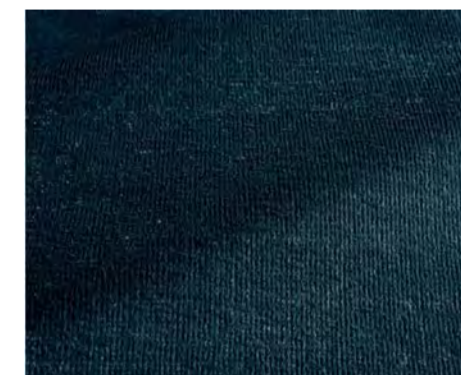
F3871013  
Lin



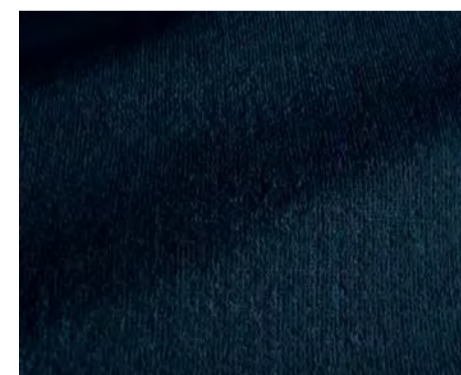
F3871014  
Pastel



F3871015  
Bleuet



F3871016  
Prusse



F3871017  
Marine



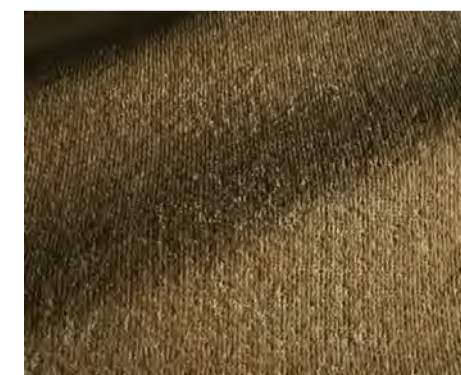
F3871018  
Celadon



F3871019  
Foret



F3871020  
Olive

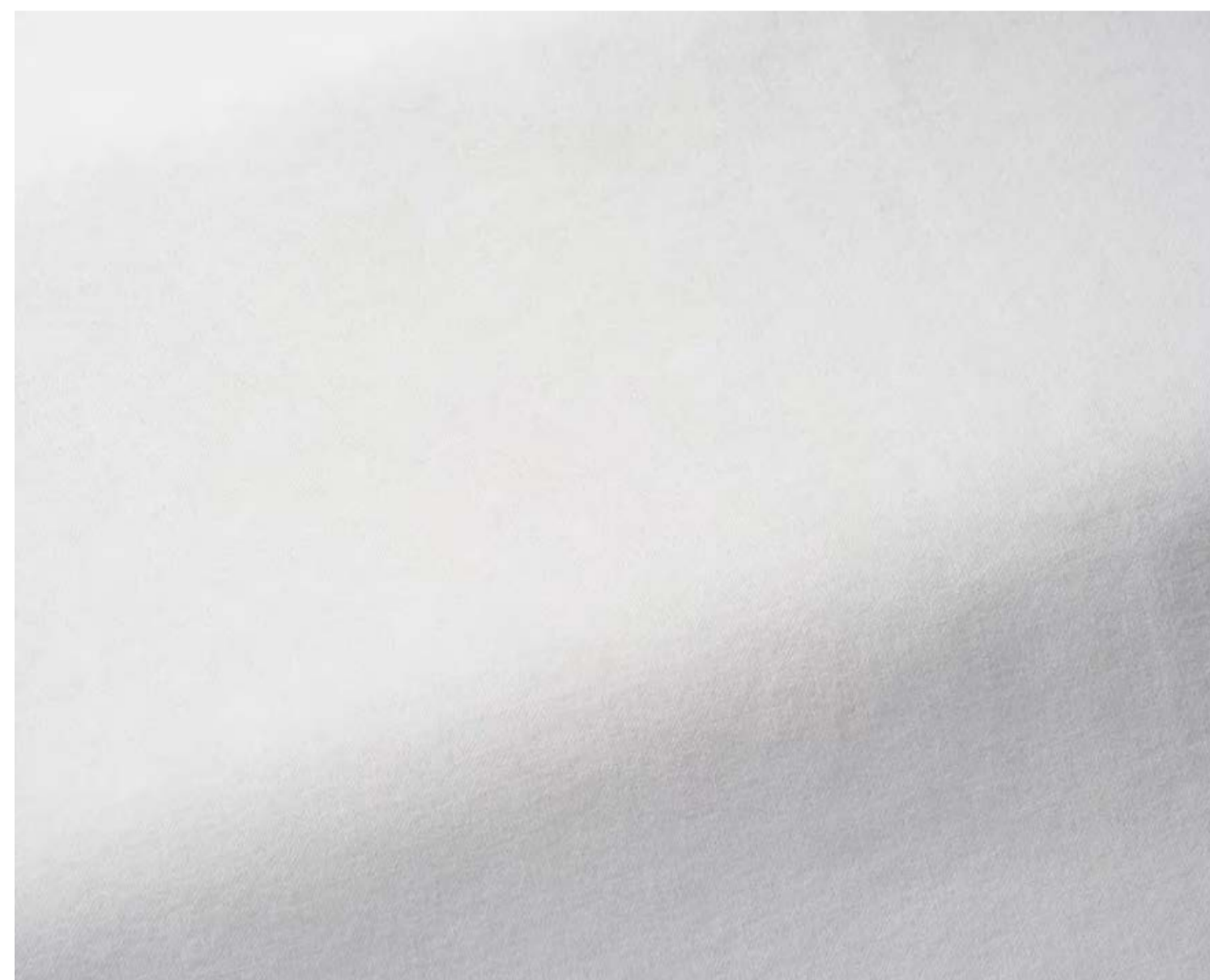


F3871021  
Saugé

# PIERRE FREY OMBOS



Vendôme armchair FrouFrou - Link



Ombos - Link

Width: 294 cm/115,74 inch

**F3329001 - BLANC**  
PIERRE FREY - NATECRU GRANDES LARGEURS

<b>PERFORMANCE</b>	High Rub Test
<b>TYPE</b>	Plains
<b>USE</b>	Moderate use
<b>MARTIN DALE</b>	30.000T
<b>COMPOSITION</b>	100% Cotton
<b>SALES UNIT</b>	Available per meter/yard
<b>WIDTH</b>	294 cm/115,74 inch
<b>WEIGHT</b>	858 gr/ml
<b>CARE</b>	

# COLORS **OMBOS**



F3329001  
Blanc



F3329002  
Crème



F3329003  
Quinoa



F3329004  
Orge

# PIERRE FREY BEUCAIRE



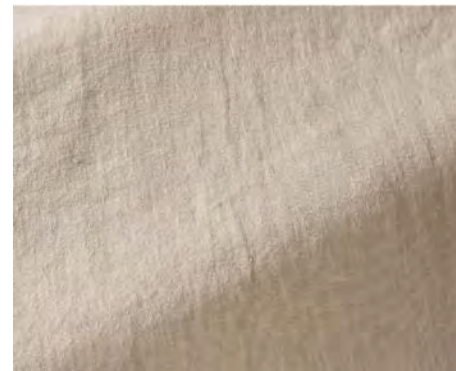
Beucaire - Link

Width: 298 cm/117,32 inch

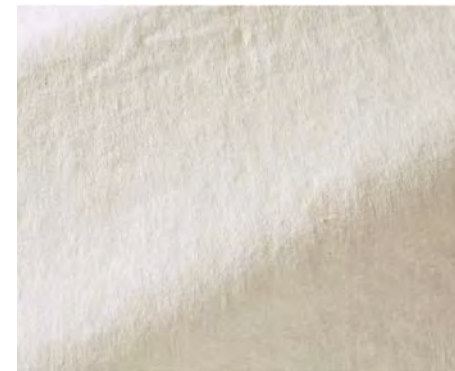
**F3386006 - TILLEUL**  
PIERRE FREY - UNIS INTEMPORELS

<b>TYPE</b>	Plains
<b>USE</b>	Moderate use
<b>MARTIN DALE</b>	25.000T
<b>COMPOSITION</b>	100% Linen
<b>SALES UNIT</b>	Available per meter/yard
<b>WIDTH</b>	298 cm/117,32 inch
<b>WEIGHT</b>	1549 gr/ml
<b>CARE</b>	
<b>CERTIFICATIONS</b>	NFPA 260-Class 1

# COLORS BEUCAIRE



F3386011  
Lin



F3386002  
Meringue



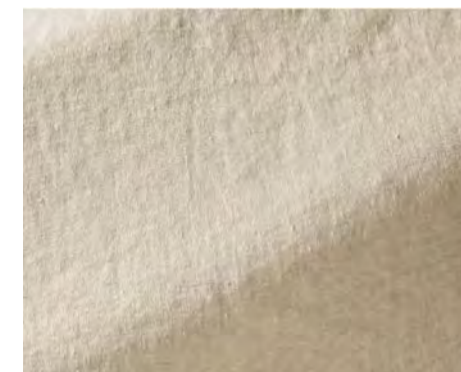
F3386001  
Coton



F3386005  
Kaki



F3386006  
Tilleul



F3386004  
Sable

PIERRE FREY  
**COMPORTA**  
 (OUTDOOR SELECTION)



Divan outdoor - Link



Comporta - Link

←—————→  
 Width: 137 cm/53,93 inch

**F3869019 - SAUGE**  
 PIERRE FREY - UNIS INTEMPORELS

<b>TYPE</b>	Chenille - Fibres douces - Plains - Plain weaves
<b>USE</b>	Intensive use
<b>MARTIN DALE</b>	60.000T
<b>COMPOSITION</b>	100% Acrylic
<b>SALES UNIT</b>	Available per meter/yard
<b>WIDTH</b>	137 cm/53,93 inch
<b>WEIGHT</b>	685 gr/ml
<b>CARE</b>	

**CERTIFICATIONS**  
 NFPA 260-Class I  
 CAL TB 117- Pass

# COLORS COMPORTA



F3869001  
Ivoire



F3869002  
Creme



F3869003  
Beige



F3869004  
Lin



F3869005  
Sable



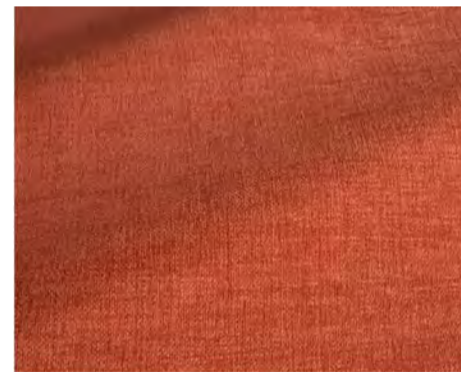
F3869006  
Caramel



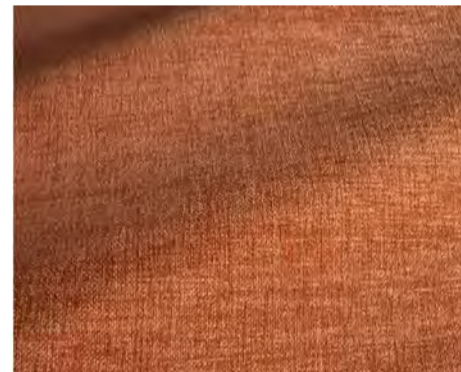
F3869007  
Camel



F3869008  
Bordeaux



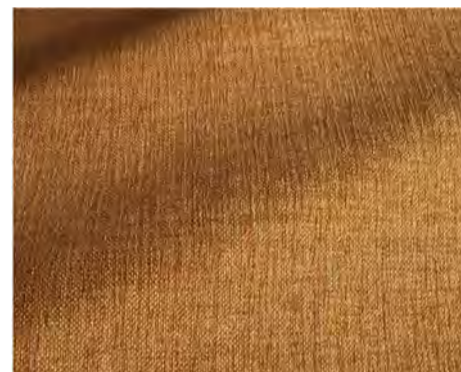
F3869009  
Sanguine



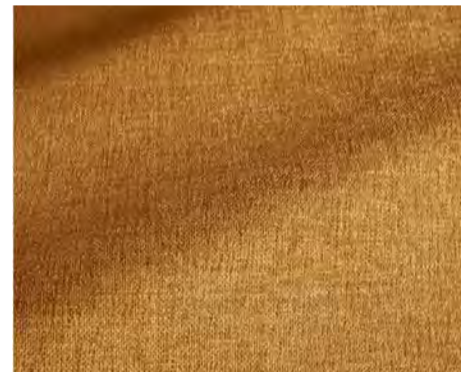
F3869010  
Capucine



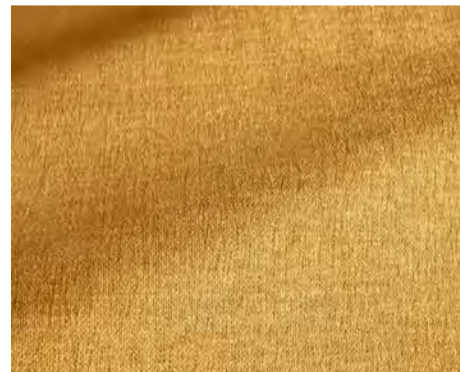
F3869011  
Bronze



F3869012  
Ocre



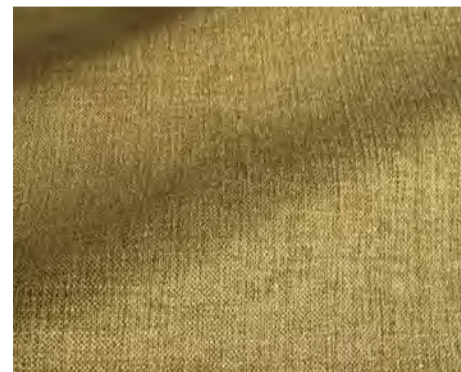
F3869013  
Miel



F3869014  
Camomille



F3869015  
Verveine



F3869016  
Asperge



F3869017  
Olive



F3869018  
Cactus



F3869019  
Saugé



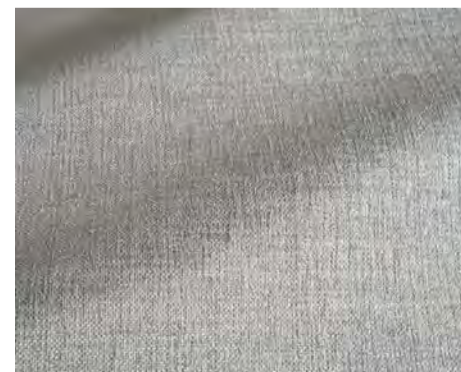
F3869020  
Amande



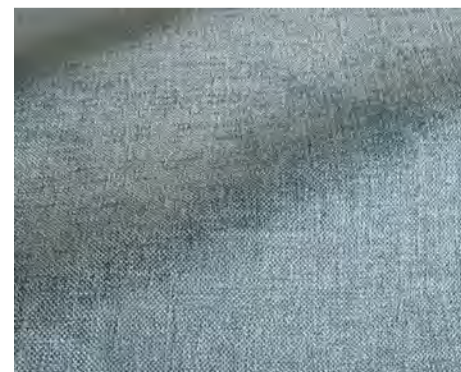
F3869021  
Nuage



F3869022  
Celeste



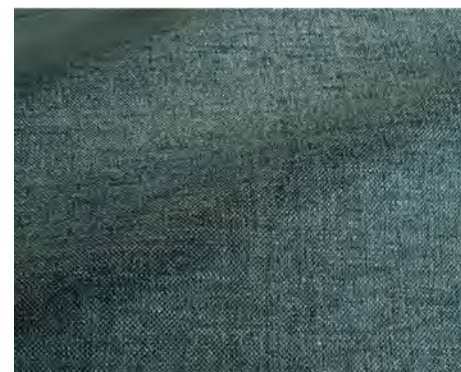
F3869023  
Orage



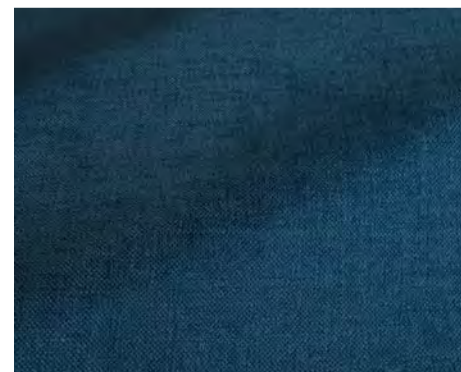
F3869024  
Azur



F3869025  
Neptune



F3869026  
Atlantique



F3869027  
Marine

# PIERRE FREY LOUISON



Louison - Link

Width: 133 cm/52,36 inch

**F3188002 - PERLE**  
PIERRE FREY - NATECRU LAINES 1

<b>PERFORMANCE</b>	High Rub Test
<b>TYPE</b>	Bouclé fabrics - Fibres douces - Plains
<b>USE</b>	Intensive use
<b>MARTIN DALE</b>	>50.000T
<b>COMPOSITION</b>	41% Wool - 39% Alpaca - 17% Cotton - 3% Acrylic
<b>SALES UNIT</b>	Available per meter/yard
<b>WIDTH</b>	133 cm/52,36 inch
<b>WEIGHT</b>	1328 gr/ml
<b>CARE</b>	
<b>CERTIFICATIONS</b>	EN1021-1-2 B55852 Cigarette & match test NFPA 260-Class 1 CRIB 5 in conjunction with suitable combustion modified foam

COLORS  
**LOUISON**



F3188001  
Crème



F3188002  
Perle

# PIERRE FREY TOUNDRA



Polus 007 - Link



Toundra - Link



Width: 128 cm / 50,39 inch

## F3928001 - NATUREL

PIERRE FREY - COLLECTION STRETCH

<b>PERFORMANCE</b>	Martindale > 25 000 T
<b>TYPE</b>	Fibres douces - Plains - Velvets
<b>USE</b>	Normal use
<b>MARTIN DALE</b>	30.000 T
<b>COMPOSITION</b>	61% Wool - 32% Polyester - 7% Elastane
<b>SALES UNIT</b>	Available per meter/yard
<b>WIDTH</b>	128 cm / 50,39 inch
<b>WEIGHT</b>	1196 gr / ml
<b>CARE</b>	

### CERTIFICATIONS

BS5852 Cigarette test  
 BS5852 Cigarette & match test  
 BS5852 Match test  
 EN1021-1-2 in conjunction with  
 suitable combustion modified foam  
 NFPA 260-Class 1  
 CAL TB 117- Pass

# COLORS TOUNDRA



F3928001  
Naturel



F3928002  
Miel



F3928003  
Mousse



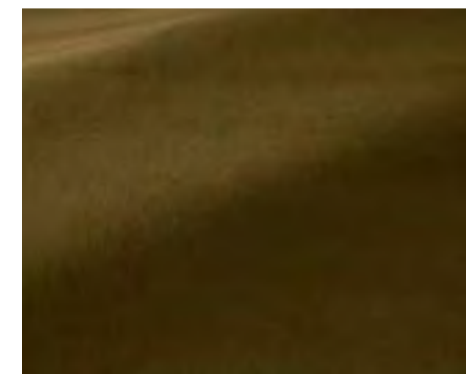
F3928004  
Ambre



F3928005  
Hérisson



F3928006  
Cannelle



F3928007  
Olive



F3928008  
Emeraude



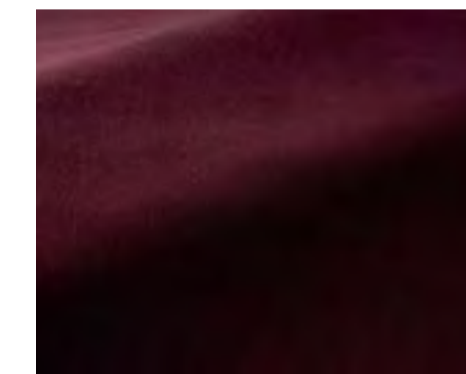
F3928009  
Canard



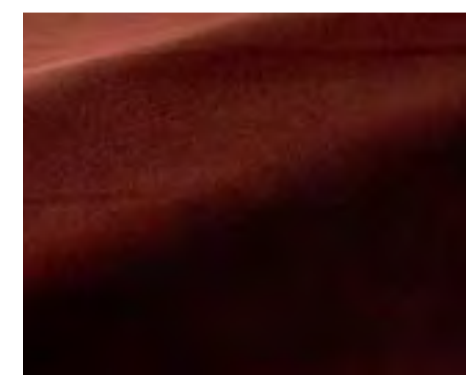
F3928010  
Ocean



F3928011  
Suie



F3928012  
Aubergine



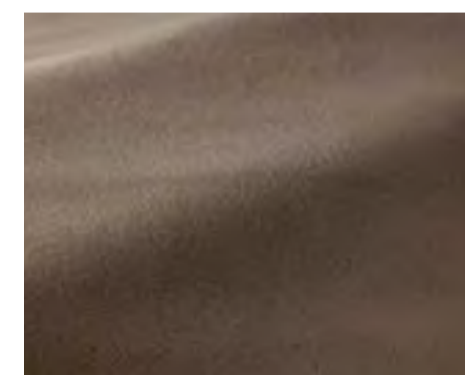
F3928013  
Cerise



F3928014  
Carmin



F3928016  
Lin



F3928017  
Souris



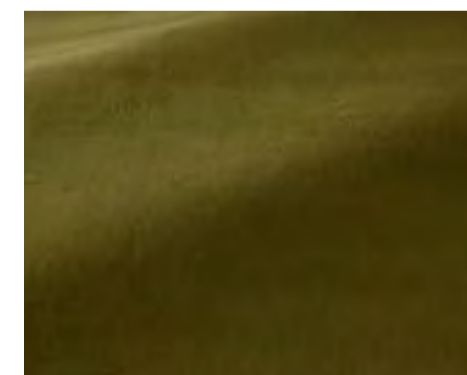
F3928018  
Chataîgne



F3928019  
Chamois



F3928020  
Coquelicot



F3928021  
Avocat



F3928022  
Saugé



F3928023  
Tempête



F3928024  
Bleuet

# PIERRE FREY LORRAINE



Lorraine - Link

Width: 142 cm / 55,90 inch

**F4090001 - CRAIE**  
PIERRE FREY - UNIS INTEMPORELS

<b>PERFORMANCE</b>	Martindale > 25 000 T
<b>TYPE</b>	Jacquards - Plains - Semi plains
<b>USE</b>	Intensive use
<b>MARTIN DALE</b>	30.000 T
<b>COMPOSITION</b>	27% Linen - 26% Polyester - 23% Cotton - 13% Acrylic - 11% Viscose
<b>SALES UNIT</b>	Available per meter/yard
<b>WIDTH</b>	142 cm / 55,90 inch
<b>WEIGHT</b>	937 gr / ml
<b>CARE</b>	

**CERTIFICATIONS**  
 EN1021-1-2  
 BS5852 Cigarette test  
 NFPA 260-Class 1  
 CAL TB 117- Pass



Minitore - Link

# COLORS LORRAINE



F4090001  
Craie



F4090002  
Lin



F4090003  
Sable



F4090004  
Naturel



F4090005  
Desert



F4090006  
Canari



F4090007  
Safran



F4090008  
Moutarde



F4090009  
Nénuphar



F4090010  
Menthe



F4090011  
Mousse



F4090012  
Colvert



F4090013  
Orage



F4090014  
Azur



F4090015  
Ciel



F4090016  
Céladon



F4090017  
Opaline



F4090018  
Poudre



F4090019  
Ambre



F4090020  
Sanguine

# PIERRE AUGUSTIN ROSE CAMBON



Cambon - Link



Width: 135 cm/53, 15 inch

## F6373001 - BEIGE

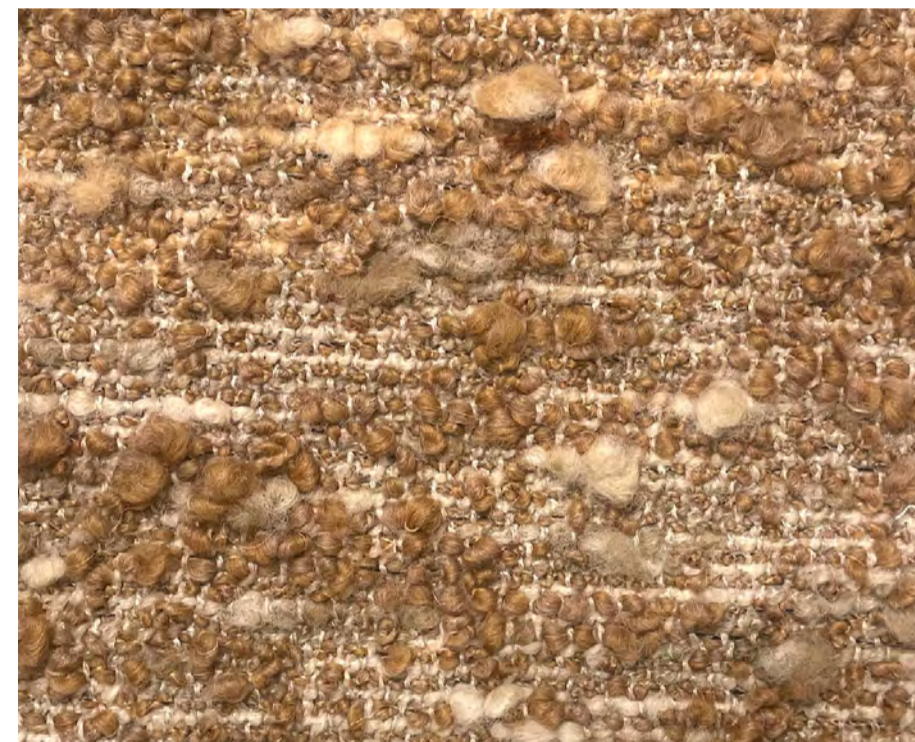
PIERRE FREY - NATECRU LAINES 1

<b>TYPE</b>	Jacquard
<b>REPEAT</b>	Semi plain
<b>USE</b>	Cushions, upholstery, drapery
<b>MARTIN DALE</b>	>60 000T
<b>COMPOSITION</b>	26% Wool - 25% Acrylic - 19% Linen - 14% Cotton - 6% Polyamide - 4% Polyester 6% Other fibers
<b>SALES UNIT</b>	Available per meter/yard
<b>WIDTH</b>	135 cm/53, 15 inch
<b>WEIGHT</b>	540 gr/m <sup>2</sup>

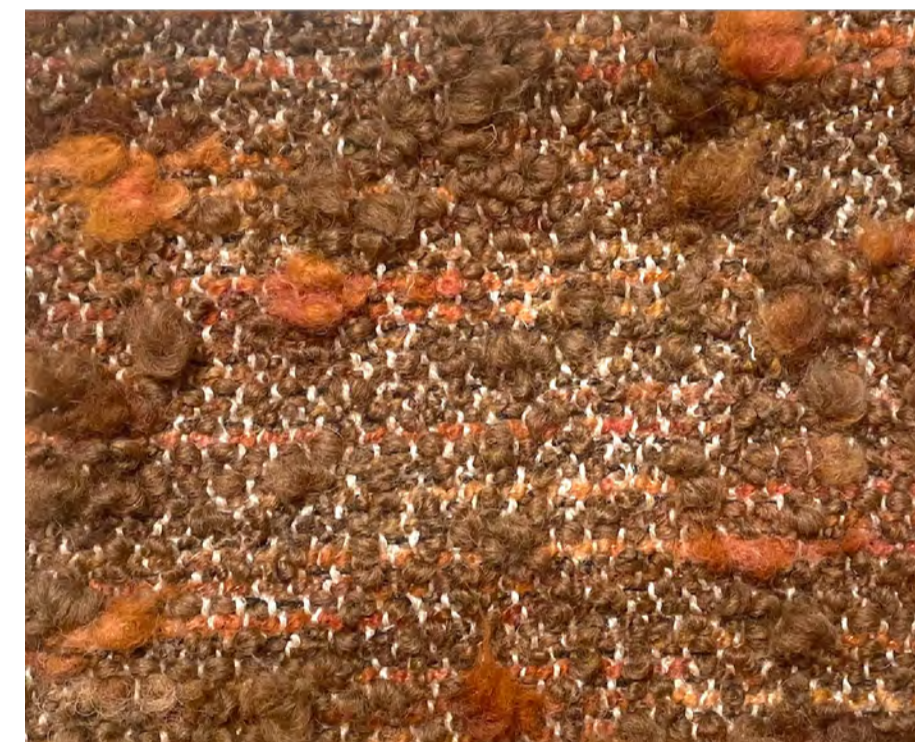


**NOTES** Fancy slubby yarn.  
Color and aspect  
could slightly change from a  
production to another

COLORS  
**CAMBON**



F6373001  
Beige



F637302  
Automne