



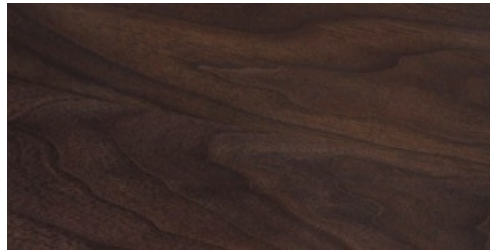
Danish oiled
Black walnut



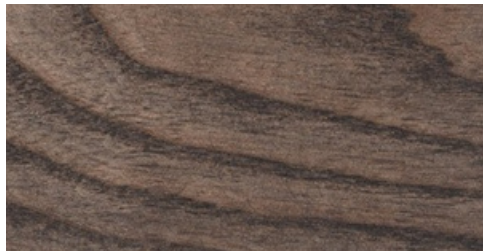
White oiled
Black walnut



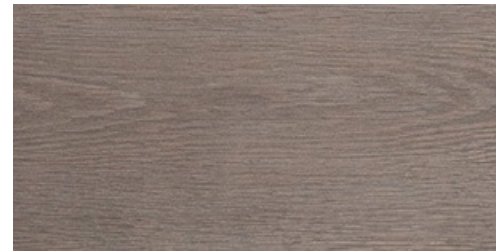
Black oiled
White oak



Black oiled
Black walnut



Black oiled
Ash



Oxidised
White oak



Danish oiled
White oak



Danish oiled
Ash



White oiled
White oak



White oiled
Ash



Bay
NCS S 7010 B50G (approximately)



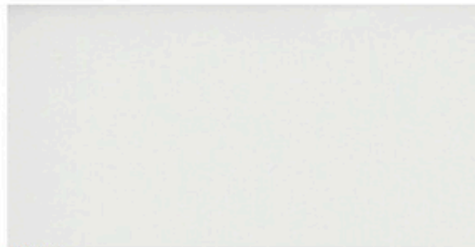
Cove
NCS S 6010 G10Y (approximately)



Dusty Rose



Lagoon
NCS 2010 G



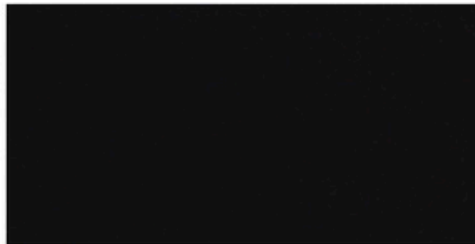
White
RAL 9016



Bone
NCS S1005-Y20R



Forest
NCS S7020-G



Black
RAL 9005



Bordeaux
NCS S6030-R10B



Ochre
NCS S 4040-Y20R

BASE

Base, designed by Sahco, is a blended textile with a rich, prominent texture and a sophisticated appearance.

MATERIAL:

- 32% Polyacrylic
- 32% New Wool
- 30% Cotton
- 6% Nylon

DESIGNER:

Sahco

DURABILITY:

35,000 Martindale



0002



0004



0011



0010



0009



0006



0007



0012



RANGE

ECRITURE

A matte melange bouclé with an elegant sheen, Ecriture combines shiny, matte and chenille yarns for a rich texture anda comfortable feel.

MATERIAL:

- 40% Polyacrylic
- 27% Polyester
- 18% Viscose
- 9% Linen
- 6% Cotton

DESIGNER:

Sahco

DURABILITY:

70,000 Martindale



0200



0210



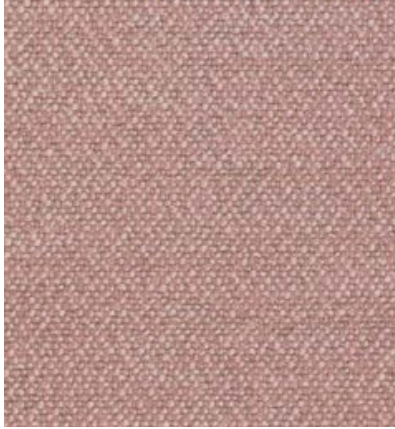
0240



0270



0970



0640



0380



0180



0780



0170



RANGE

CIFRADO

A heavyweight chenille, Cifrado combines chenille and twisted cotton with a double warp of twisted linen and viscose and a high percentage of recycled yarns. It is tumble-finished to achieve a lived-in effect.

MATERIAL:

- 42% Recycled polyester
- 27% Viscose
- 24% Recycled cotton
- 7% Linen

DESIGNER:
Sahco

DURABILITY:
30,000 Martindale



RANGE

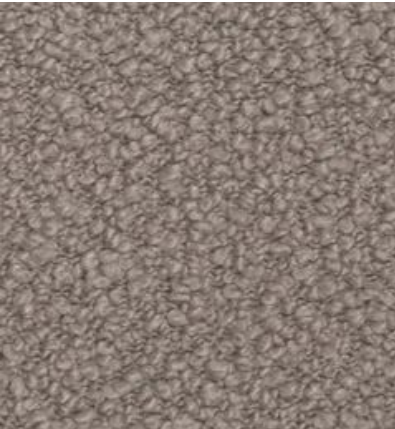
ELLE

A curledboucléfabricwith a slightsheen,Ellehas a captivatingtoneshift due tothedifferingways the variousyarnstake the colour.Ithasasoft tactility.

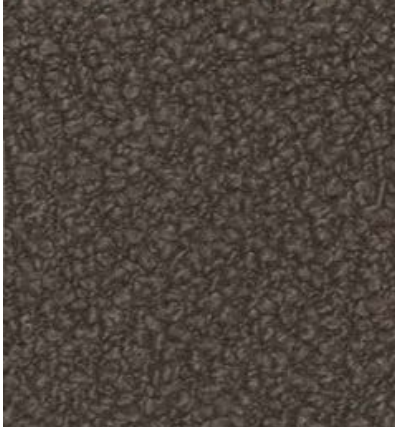
MATERIAL:
25% Cotton
20% Viscose
20% Polyacrylic
20% New wool
15% Nylon

DESIGNER:
Sahco

DURABILITY:
70,000 Martindale



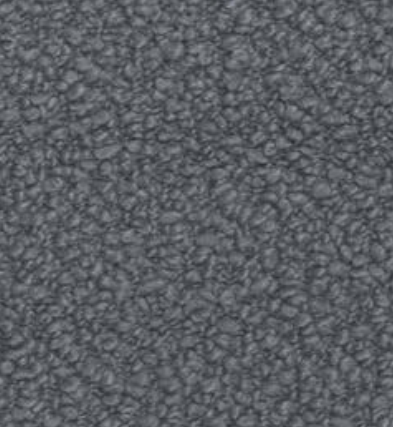
0200



0220



0480



0280



0390



0150

0290

0180



RANGE

KEIGA

Keiga is rich in nuance; matte wool grounds the structure, enlivened by the contrast from the shiny yarns.

MATERIAL:
38% New wool
37% Viscose
16% Linen
9% Nylon

DESIGNER:
Sahco

DURABILITY:
50,000 Martindale



0112



0222



0242



0622



RANGE

SONAR 3

Inspired by the finest suiting tweeds used in high-end fashion garments, Sonar, designed by Raf Simons, features a complex mix of colours and textures.

MATERIAL:

- 59% New wool
- 25% Viscose
- 9% Linen
- 5% Nylon
- 2% Polyester

DESIGNER:

Raf Simons

DURABILITY:

20,000 Martindale



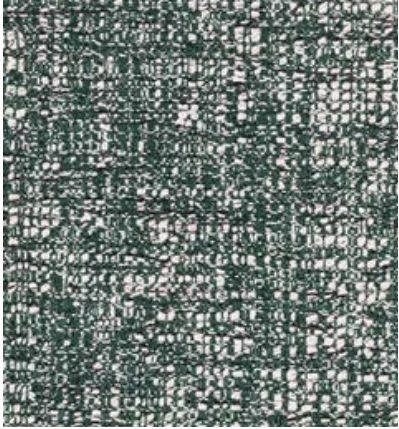
0113



0684



0934



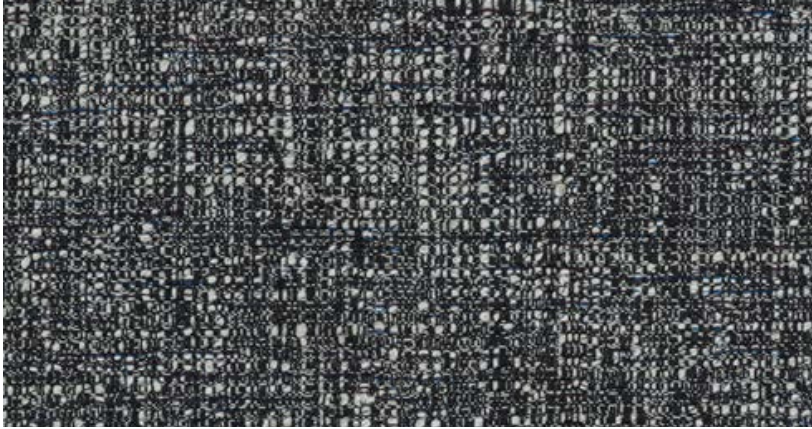
0974



0153



0773



0173



RANGE

BYRAM

Byram, designed by Raf Simons, is made with pure kid mohair. Thanks to the satiny sheen of its pile, Byram exhibits beautifully nuanced colour.

MATERIAL:

100% Kid mohair

DESIGNER:

Raf Simons

DURABILITY:

70,000 Martindale



RANGE

EINAR

Einar, designed by Raf Simons, is plush and ultra-soft from the combination of mohair and alpaca. The nuanced colour of the evenly cut pile is accentuated by slight variations in the cotton base.

MATERIAL:

70% Alpaca
30% Mohair

DESIGNER:

Raf Simons

DURABILITY:

20,000 Martindale



0127



0527



0427



0987



0197



RANGE

CORRECTED GRAIN / FINISHED LEATHER

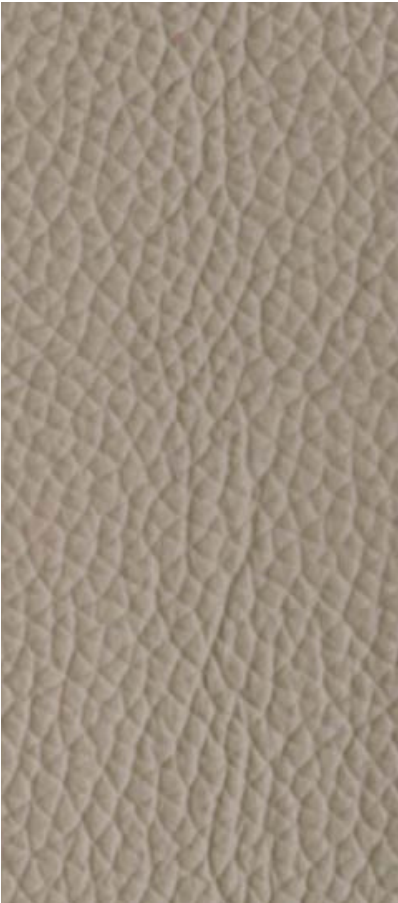
Our finished leather is soft, supple, and hardwearing. A corrected grain leather, it has a uniform surface and a protective top coat. Suitable for a wide range of applications, it is resistant to spillage and staining and is easy to clean. This low-maintenance leather has a soft handle and a silky matte finish.



FOG



CHOCOLATE



DUNE



LIQUORICE



RANGE

NATURAL GRAIN LEATHER

The natural grain of thiscow hide leather is preserved,the surface lightly buffed.The hides, chosen for theirmore uniform surface, willcontain natural grain variations and may contain othersmall marks, such as scars,lending each piece individualityand character.

The hide is through-dyedthen finished with pigmentedand protective coats, producing a waxy feel and semi-matte appearance. This leatheris soft, hardwearing, andlow-maintenance.



BROWN



BLACK



RANGE

ELMORUSTICAL VIII

An aniline leather from Scandinavian cattle, Elmorustical is soft and natural, offering outstanding comfort. The finest quality hides are chosen, as this full grain leather maintains the distinct features of the natural hide, lending each piece individuality and character. The surface is untreated, offering a luxuriously soft and natural feel. This leather is more sensitive to stains and will develop a patina over time, improving with the mark of age.

Please note that when using Elmorustical to upholster expansive surfaces such as the headboard of a bed, our craftspeople will use their discretion to ensure the natural variations in the colour and grain are most elegantly displayed. This may mean adding a stitch line to the surface.



22679



91089



93287



99991



RANGE

CURLY SHEEPSKIN

Our curlywoolsheepskinis durable and luxuriously soft. Its woolheight,varying between 12mm and 17mm, provides sumptuous depth while allowing for clean contours on our upholsteredfurniture.The visual depth is enhanced by the subtlevariationbetween the highlightedtipsand darker base. As every hide is unique, the structure of the wool may vary in regard to height, curls, and colour.

This material is scarce as the hides are small and, while they vary in quality, only the best quality hides are chosen before being expertly stitched together by our supplier in Sweden. This scarcity affects our manufacturingleadtime, so productspurchasedinCurly Sheepskin will always have extended lead times.

Curly Sheepskin is only available on select products, as it behaves differently from leather and most textiles in terms of elasticity which affects how it is applied to different shapes.

Curly Sheepskin is currently available for the following products:

- Capo Lounge Armchair
- Capo Lounge Chair
- Cursa Lounge Chair
- Elysia Lounge Chair
- Hadar Lounge Chair
- Nino Ottoman
- Saia Lounge Chair
- Sela Lounge Chair with Narrow Arms
- Sela Lounge Chair with Wide Arms
- Solo Lounge Chair
- Solo Ottoman
- Twenty-Five Bergere Chair
- Twenty-Five Lounge Armchair
- Twenty-Five Ottoman
-
-
-



MOHAWI



SCANDINAVIAN GREY



RANGE