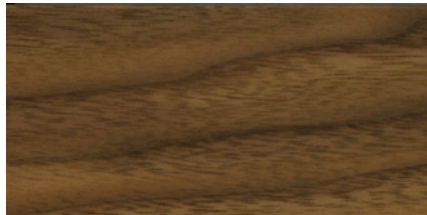


**TIMBER/FINISH OPTIONS**

All timber products are available in all of the solid timbers and finishes listed on pages 3 and 4 of this document unless otherwise indicated in our media. The timber we use is from sustainable farms. The trees on the farms are pruned regularly to allow for consistent grain patterns and fewer knots, ensuring exceptionally strong planks of the highest quality.

Our oil finishes provide a renewable surface for enduring beauty.

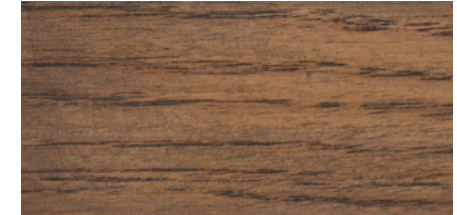
Our oxidised timber is sealed with a clear matte lacquer to maintain the colour whilst preserving the tactility of the surface.



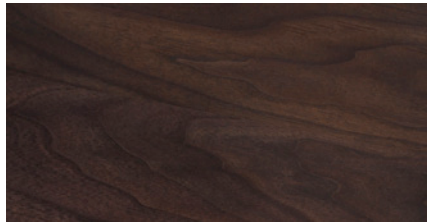
*Danish oiled  
Black walnut*



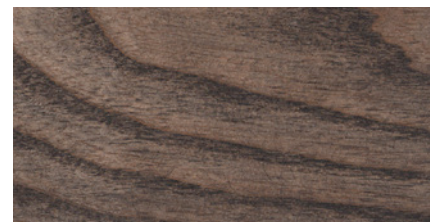
*White oiled  
Black walnut*



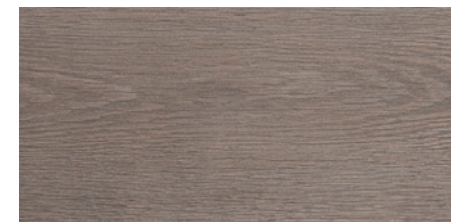
*Black oiled  
White oak*



*Black oiled  
Black walnut*



*Black oiled  
Ash*



*Oxidised  
White oak*



*Danish oiled  
White oak*



*Danish oiled  
Ash*



*White oiled  
White oak*



*White oiled  
Ash*

**PAINT/STAIN OPTIONS**

We offer ten standard colours that can be applied to our products in a variety of ways:

**PAINTED ASH**

Paint is evenly applied to European ash timber.

**STAINED ASH**

European ash timber is stained then sealed with a clear matte lacquer to maintain the colour whilst preserving the tactility of the surface.

**PAINTED HDF**

High density fibreboard is painted to create our satin matte finish, or painted then coated in clear lacquer to create our gloss finish.

**PAINTED FIBREGLASS**

Fibreglass is painted to create our satin matte finish, or painted then coated in clear lacquer to create our gloss finish.



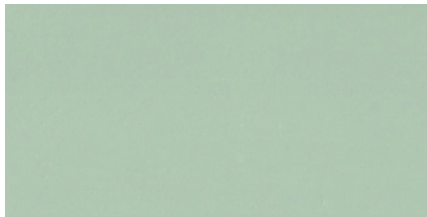
**Bay**  
**NCS S 7010 B50G (approximately)**



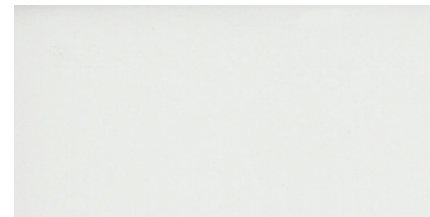
**Cove**  
**NCS S 6010 G10Y (approximately)**



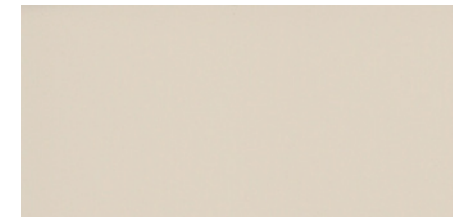
**Fjord**  
**NCS S 3010 G20Y**



**Lagoon**  
**NCS 2010 G**



**White**  
**RAL 9016**



**Bone**  
**NCS S1005-Y20R**



**Forest**  
**NCS S7020-G**



**Black**  
**RAL 9005**



**Bordeaux**  
**NCS S6030-R10B**



**Ochre**  
**NCS S 4040-Y20R**

DE LA ESPADA  
UPHOLSTERY COLLECTION

USA  
2022

**DE LA ESPADA**

## AVALON 2

Avalon velvet is a much-loved basic. This piece-dyed fabric has a unique glossy surface almost reminiscent of silk. It has flame retardant properties and is extremely hardwearing.

**MATERIAL:**  
100% Trevira CS

**DESIGNER:**  
Sahco

**DURABILITY:**  
100,000 Martindale

DE LA ESPADA



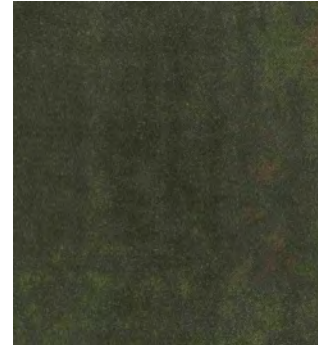
035



056



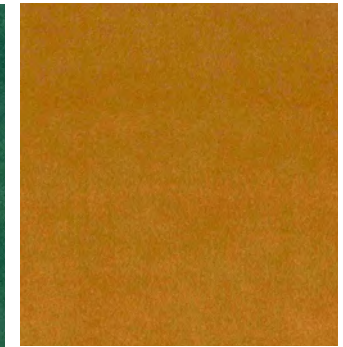
034



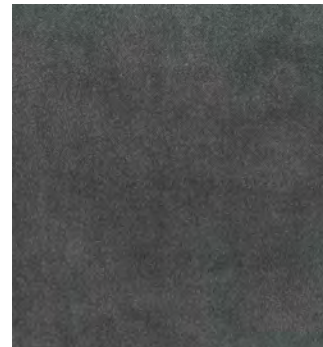
038



055



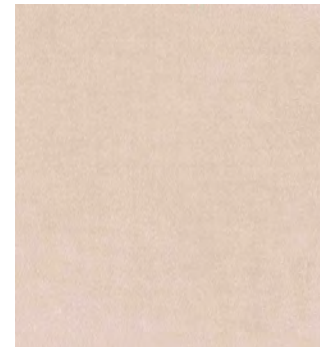
050



003



004



007



RANGE

# BYRAM

Byram, designed by Raf Simons, is made with pure kid mohair. Thanks to the satiny sheen of its pile, Byram exhibits beautifully nuanced colour. This luxuriously soft textile is very hardwearing.

**MATERIAL:**

100% Kid mohair

**DESIGNER:**

Raf Simons

**DURABILITY:**

70,000 Martindale

DE LA ESPADA



131



471



161



361



971



RANGE

## BALDER 3

Designed by Fanny Aronsen and Raf Simons, Balder is woven from several different tones of thread creating subtle fluctuations in colour across the surface of the fabric. It is extremely hardwearing.

### MATERIAL:

68% New wool

26% Cotton

6% Nylon

### DESIGNER:

Raf Simons & Fanny Aronsen

### DURABILITY:

100,000 Martindale

DE LA ESPADA



612



132



192

B

RANGE

## SUNNIVA 3

Designed by Fanny Aronsen and Raf Simons, this fabric combines two tones of wool, woven in a fine, flat, tweed-like pattern with a glossy top note.

### MATERIAL:

58% New wool

25% Viscose

8% Linen

5% Nylon

4% Polyester

### DESIGNER:

Raf Simons & Fanny Aronsen

### DURABILITY:

50,000 Martindale

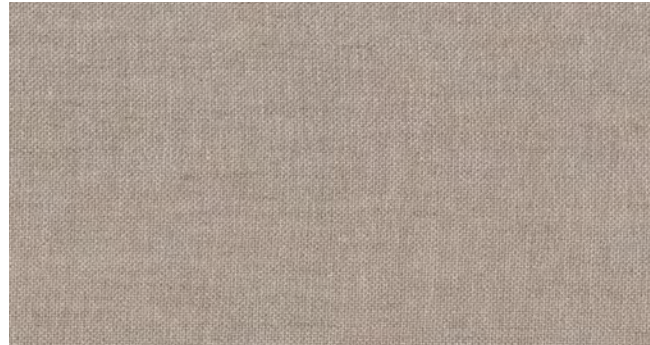
DE LA ESPADA



811



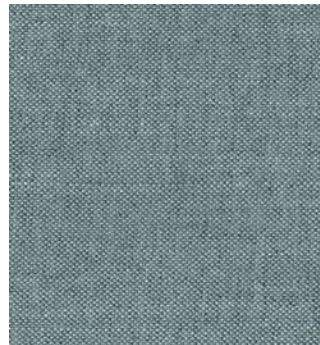
236



717



132



152



RANGE

# VIDAR 3

Woven from bouclé yarns with a regular loop size, Vidar has a large-grained texture, a gentle satin surface finish, and great depth. Designed by Raf Simons and Fanny Aronsen, it is extremely hardwearing at 100,000 rubs Martindale.

**MATERIAL:**

94% New wool  
6% Nylon

**DESIGNER:**

Raf Simons & Fanny Aronsen

**DURABILITY:**

100,000 Martindale

DE LA ESPADA



152



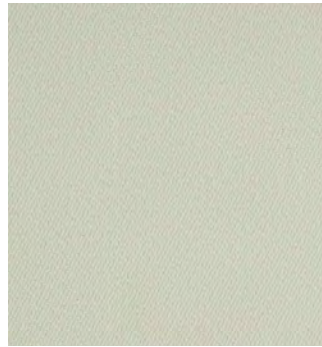
1880



943



1062



1511



222





# SAFIRE

Safire has a subtle handwoven appearance. The thick bouclé and chenille yarns contribute to its wooly soft handle and create a vibrant two-tone effect.

## MATERIAL:

43% Viscose  
17% Acrylic  
15% New wool  
9% Cotton  
8% Linen  
8% Polyester

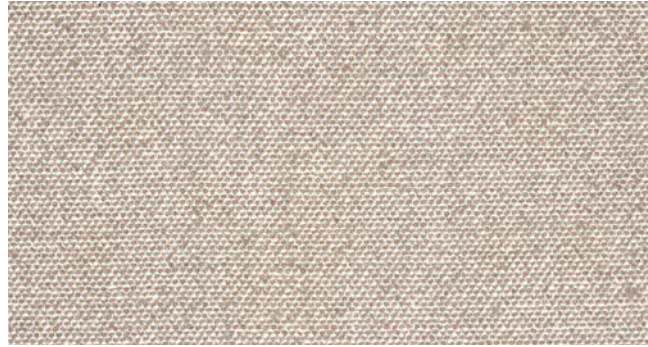
## DESIGNER:

Sahco

## DURABILITY:

40,000 Martindale

DE LA ESPADA



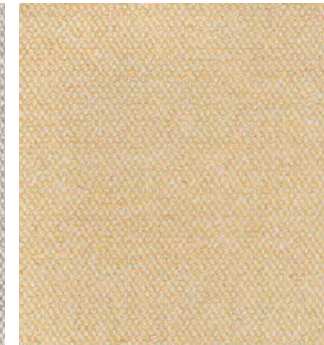
004



007



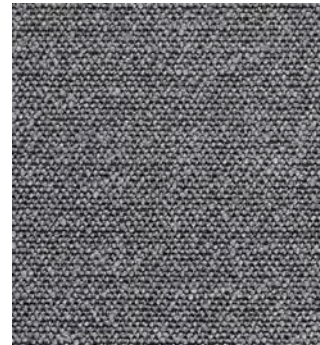
008



015



010



009



RANGE

# ATOM

Atom is a vibrant and experimental bouclé fabric with no visible repeat. It is inspired by fragments of pointillist landscapes in expressionist paintings. The textile features speckles of colour that seem randomly scattered across its surface. This textile, designed by Raf Simons, is very hardwearing at 65,000 rubs Martindale.

## MATERIAL:

90% New wool (worsted)

8% Nylon

2% Polyester

## DESIGNER:

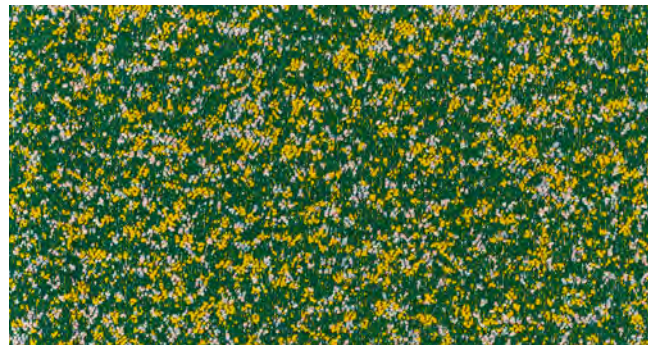
Raf Simons

## DURABILITY:

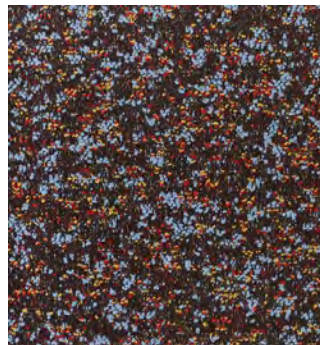
65,000 Martindale



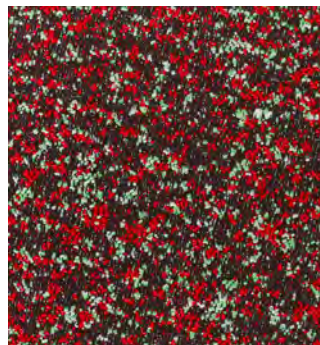
124



964



774



574

DE LA ESPADA



RANGE

# SONAR 3

Inspired by the fine suiting tweeds used in high-end fashion garments, Sonar, designed by Raf Simons, features a complex mix of colours and textures.

**MATERIAL:**

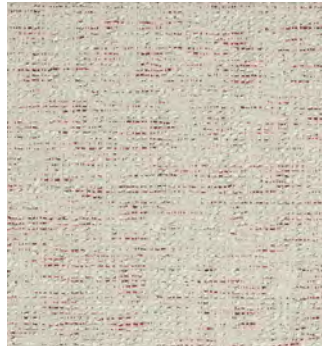
- 59% New wool
- 25% Viscose
- 9% Linen
- 5% Nylon
- 2% Polyester

**DESIGNER:**

Raf Simons

**DURABILITY:**

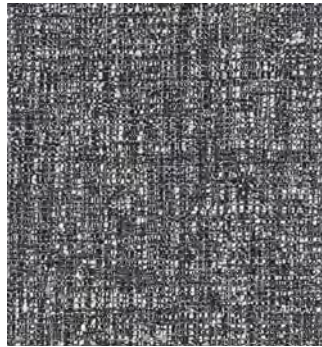
20,000 Martindale



113



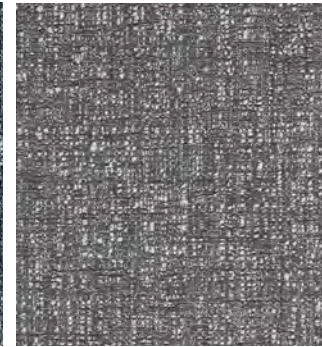
684



173



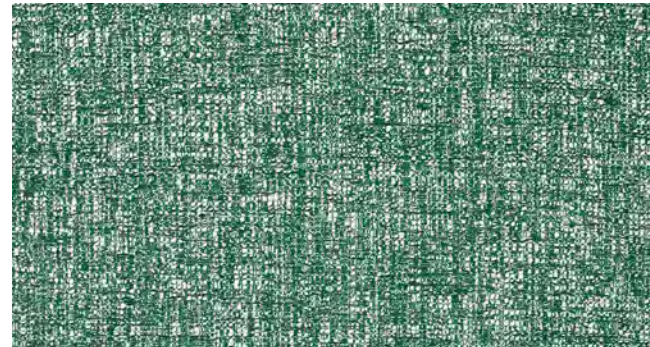
773



153



934



974



# JADE

Jade combines a soft, matte chenille yarn and smooth, shiny polyester in the warp and weft. An irregular chequerboard design creates an embossed effect.

## MATERIAL:

45% Cotton  
30% Viscose  
25% Polyester

## DESIGNER:

Sahco

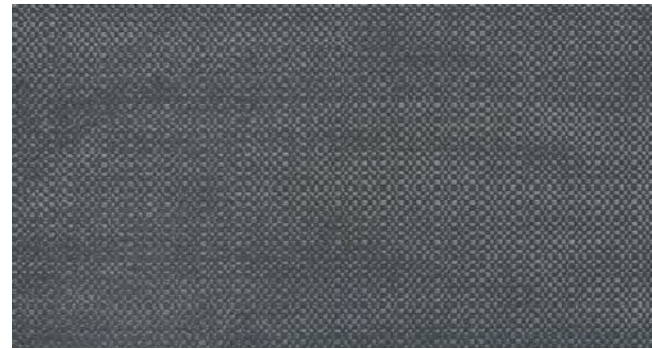
## DURABILITY:

20,000 Martindale

DE LA ESPADA



001



002



005



003



007



016



RANGE

# FUSE

Fuse, a textile designed by Raf Simons, has ribbed stripes woven in stitch-like patterning that slightly blends the two colours in the textile. Fuse is extremely hardwearing at 100,000 rubs Martindale.

## MATERIAL:

65% New wool (worsted)  
23% Cotton  
8% Viscose  
4% Nylon

## DESIGNER:

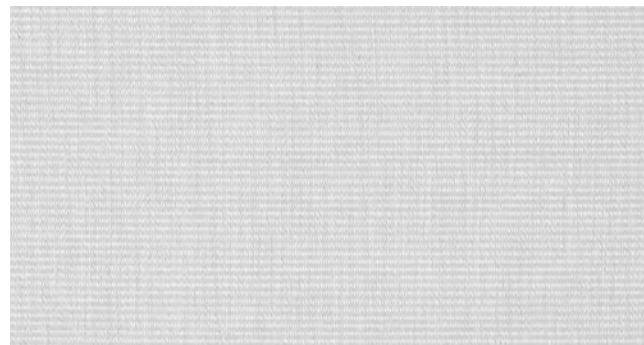
Raf Simons

## DURABILITY:

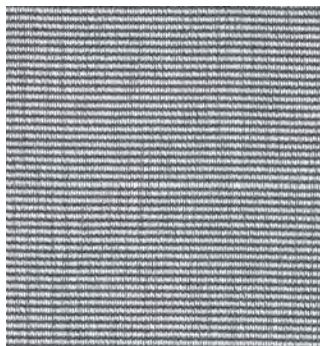
100,000 Martindale



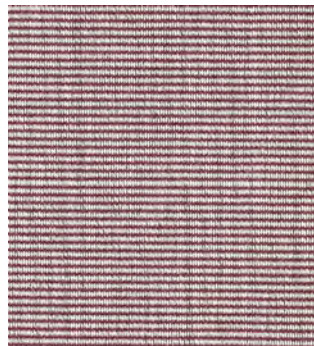
111



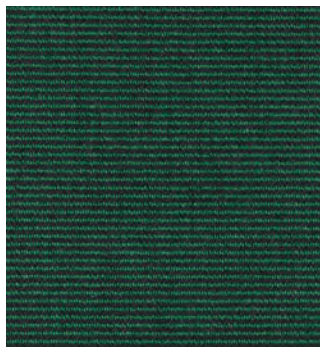
121



131



631



981



## NATURAL GRAIN LEATHER

The natural grain of this finished cow hide leather is preserved, the surface lightly buffed. Natural grain variations lend each piece individuality and character.



BROWN



BLACK

DE LA ESPADA

B

RANGE

## ELMORUSTICAL VIII

DE LA ESPADA

An aniline leather from Scandinavian cattle, Elmorustical is soft and natural, offering outstanding comfort. This full grain leather maintains the distinct features of the natural hide, lending each piece individuality and character.

Please note that when using Elmorustical to upholster expansive surfaces such as the headboard of a bed, our craftspeople will use their discretion to ensure the natural variations in the colour and grain are most elegantly displayed. This may mean adding a stitch line to the surface.



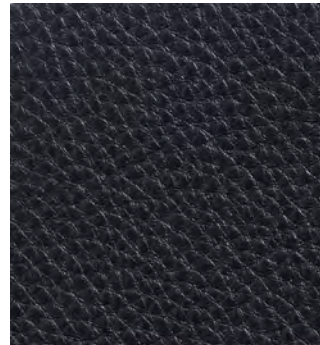
22679



93287



91089



99991



RANGE

## CORRECTED GRAIN / FINISHED LEATHER

DE LA ESPADA

Our finished leather is soft, supple, and hardwearing. A corrected grain leather, it is water resistant and easy to clean making it suitable for a wide range of applications. The natural cow hide undergoes a retannage process in addition to being treated with technically advanced finishing formulas to create a protective barrier against spillage and staining.



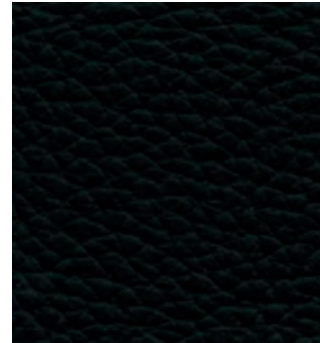
FOG



DUNE



CHOCOLATE



LIQUORICE



RANGE



## CURLY SHEEPSKIN

Our curly wool sheepskin is durable and luxuriously soft. The 12mm wool height provides sumptuous depth while allowing for clean contours on our upholstered furniture. The visual depth is enhanced by the subtle variation between the highlighted tips and darker base.

This material is scarce as the hides are small and, while they vary in quality, only the best quality hides are chosen before being expertly stitched together by our supplier in Sweden. This scarcity affects our manufacturing lead time, so products purchased in Curly Sheepskin will always have specially-quoted lead times.

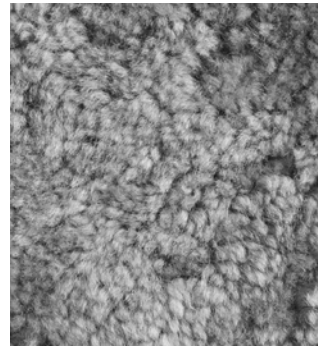
Curly Sheepskin is only available on select products, as it behaves differently from leather and most textiles in terms of elasticity which affects how it is applied to different shapes.

Curly Sheepskin is currently available for the following products:

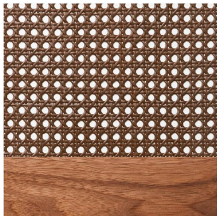
- Solo Lounge Chair
- Solo Ottoman
- Saia Lounge Chair
- Capo Lounge chair
- Capo Lounge Armchair
- Elysia Lounge Chair
- Nino Ottoman



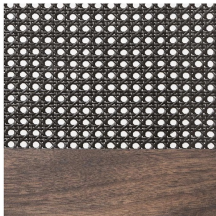
MOHAWI



SCANDINAVIAN GREY



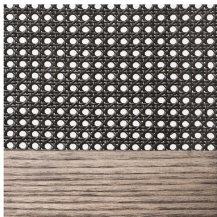
Danish oiled walnut



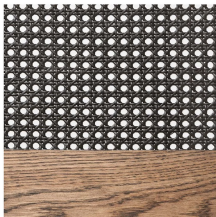
Black oiled walnut



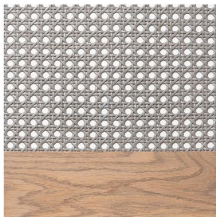
White oiled walnut



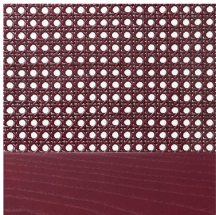
Black oiled ash



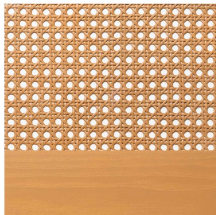
Black oiled oak



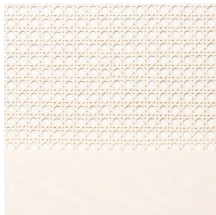
Oxidised oak



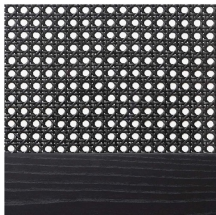
Bordeaux stained ash



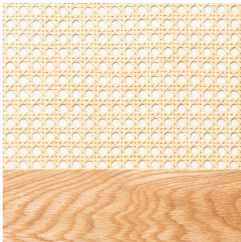
Ochre stained ash



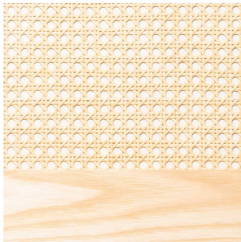
Bone stained ash



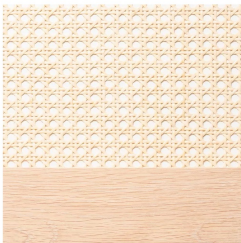
Black stained ash



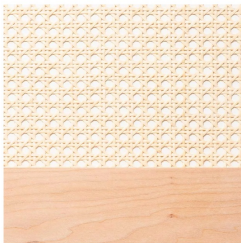
Danish oiled oak



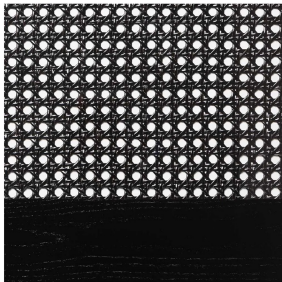
Danish oiled ash



White oiled oak



White oiled ash



Black painted ash



White painted ash