

Bruma Chandelier Sparse 80

BMCHSE80

IP20

Materials

Murano Glass and Aluminium

Weight (excluded canopy)

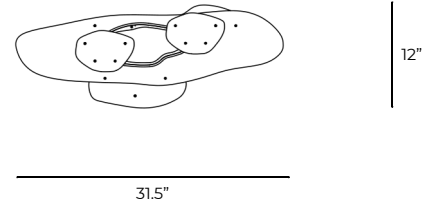
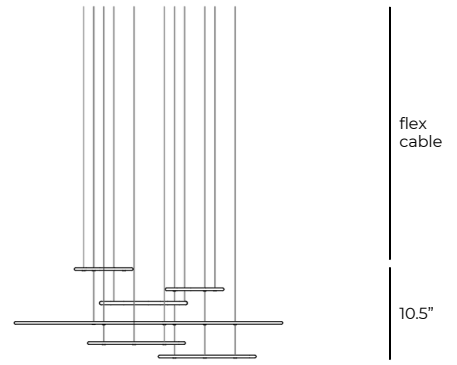
~12 lbs

Power Input

110-120V 50-60Hz

Light Source (included)

1 Proprietary LEDs. Tot. 16.1 W, 1648 Lumens,
2700K warm white. CRI>90.
75% downwards and 25% upwards.



CONFIGURATION

STEP 1 - CHOOSE YOUR METAL + GLASS FINISH



SILVER PLATED

+

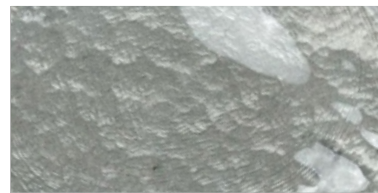
CRYSTAL PULEGOSO



BLACKENED NICKEL

+

SMOKEY GREY



STEP 2 - CHOOSE YOUR DROP HEIGHT

DROP HEIGHT

Steel Wire Suspension.

Specify your Drop height in inches to our sales team.

MADE TO ORDER

STEP 3 - CHOOSE YOUR CANOPY AND DRIVER

CANOPY + DRIVER

+ Single canopy with built-in phasecut driver. Recommended.

W25.2" X D13.8" X H1.4"



WHITE RAL 9016

PHASECUT

*Custom Canopy Colour
(RAL Classic) available
on request

+ Single canopy with built-in Driver and Alternative dimmable standards, if required by electrician.

W25.2" X D13.8" X H1.4"



WHITE RAL 9016

1-10 VOLT