

PIETBOON

BIRCH FABRICS P2

FEATURES

Composition	33% polyester, 25% polyacrylic, 23% viscose, 10% cotton, 9% linen
Width	140 cm
Weight	884 g/lm
Abrasion	50.000 martindale
Colour fastness	5/6 dep. on colour
Cleaning	Dry cleaning or visit www.pietboon-care.nl
Cal 117 test	Pass
BS 5852 0	Pass

SAMPLES



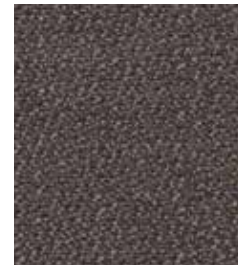
BIRCH 5



BIRCH 11



BIRCH 16



BIRCH 17



BIRCH 21

PIETBOON

BIRCH FABRICS P2

SAMPLES



BIRCH 34



BIRCH 55



BIRCH 53



BIRCH 55



BIRCH 58



BIRCH 59



BIRCH 63



BIRCH 65



BIRCH 67

PIETBOON

BRESCIA FABRICS P2

FEATURES

Composition	42% Viscose, 38% Cotton, 14% Polyacrylic, 6% Polyester
Width	140 cm
Weight	1008 g/lm
Abrasion	30.000 martindale
Colour fastness	4/5 dep. on colour
Cleaning	Dry cleaning or visit www.pietboon-care.nl
CAL 117 TEST	Pass
NFPA 260	Pass
BS 5852 0	Pass
BS 5852 1	Pass

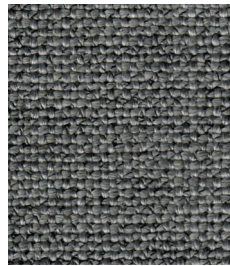
SAMPLES



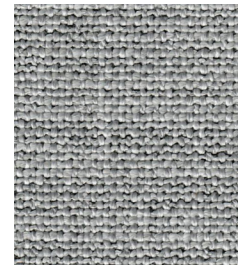
BRESCIA 12



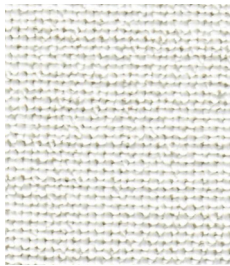
BRESCIA 11



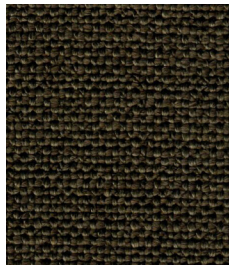
BRESCIA 10



BRESCIA 8



BRESCIA 7



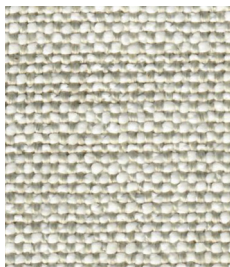
BRESCIA 6



BRESCIA 5



BRESCIA 4



BRESCIA 1

PIETBOON

CANVAS

FABRICS P2

FEATURES

Composition	34% Viscose, 31% Cotton, 15% Linen, 13% Polyacrylic, 7% Polyethylene
Width	140 cm
Weight	945 g/lm
Abrasion	25.000 martindale
Colour fastness	4/5 dep. on colour
Cleaning	Dry cleaning or visit www.pietboon-care.nl
CAL 117	Pass
BS 5852 0	Pass

SAMPLES



CANVAS 3



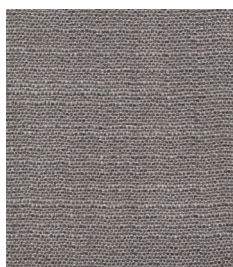
CANVAS 16



CANVAS 2



CANVAS 4



CANVAS 6



CANVAS 7

PIETBOON

COTTONS

FABRICS P1

FEATURES

Composition	100% Cotton
Width	140 cm
Abrasion	65.000 martindale
Colour fastness	4/5 dep. on colour
Cleaning	Dry cleaning or visit www.pietboon-care.nl
CAL 117 TEST	Pass
NFPA 260	Pass
BS 5852 0	Pass
DIN EN ISO 1021 Part I	Pass

SAMPLES



COTTONS 54



COTTONS 11



COTTONS 16



COTTONS 58



COTTONS 21



COTTONS 07



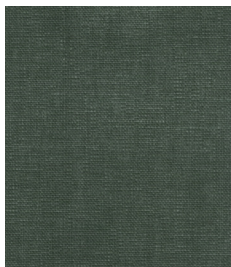
COTTONS 25



COTTONS 60



COTTONS 40



COTTONS 19



COTTONS 18



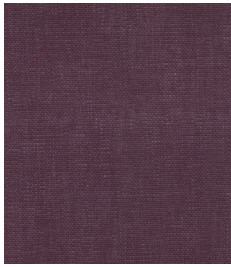
COTTONS 53

PIETBOON

COTTONS

FABRICS P1

SAMPLES



COTTONS 65



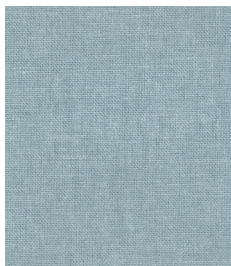
COTTONS 28



COTTONS 12



COTTONS 59



COTTONS 49



COTTONS 36



COTTONS 67



COTTONS 23

PIETBOON

FLAX FABRICS P3

FEATURES

Composition	59% Linen, 18% Cotton, 15% Viscose, 8% Polyester
Width	140 cm
Abrasion	40.000 martindale
Colour fastness	5/6 dep. on colour
Cleaning	Dry cleaning or visit www.pietboon-care.nl
BS 5852 0	Pass
BS 5852 1	Pass

SAMPLES



FLAX 1



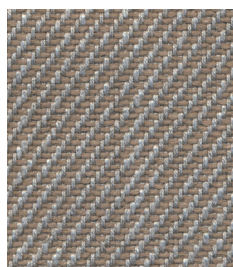
FLAX 8



FLAX 10



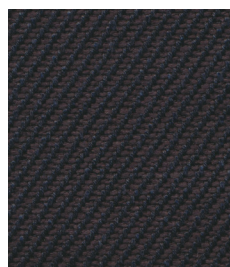
FLAX 6



FLAX 9



FLAX 2



FLAX 3

PIETBOON

FLOCK FABRICS P2

FEATURES

Composition	35% Wool, 35% Polyacrylic, 23% Polyester, 7% Cotton
Width	140 cm
Weight	587 G/lm
Abrasion	40.000 martindale
Colour fastness	4/5 dep. on colour
Cleaning	Dry cleaning or visit www.pietboon-care.nl
CAL TB 117	Pass
BS 5852 0	Pass

SAMPLES



FLOCK 02



FLOCK 03



FLOCK 04



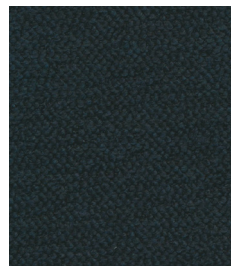
FLOCK 05



FLOCK 06



FLOCK 18



FLOCK 10



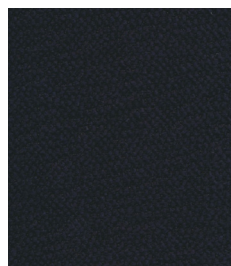
FLOCK 11



FLOCK 12



FLOCK 13



FLOCK 17

PIETBOON

OXFORD

FABRICS P3

FEATURES

Composition	39% Linen, 27% Jute, 24% Viscose, 10% Cotton
Width	140 cm
Weight	1000 G/lm
Abrasion	30.000 martindale
Colour fastness	4/5 dep. on colour
Cleaning	Dry cleaning or visit www.pietboon-care.nl
BS 5852 0	Pass
BS 5852 1	Pass

SAMPLES



OXFORD 2



OXFORD 27



OXFORD 4



OXFORD 55



OXFORD 58



OXFORD 28



OXFORD 54



OXFORD 18

PIETBOON

TABBY FABRICS P1

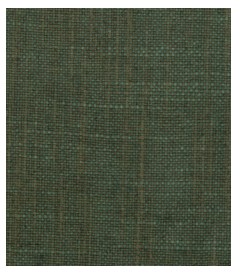
FEATURES

Composition	70% Viscose, 30% Linen
Width	140 cm
Abrasion	20.000 martindale
Colour fastness	4/5 dep. on colour
Cleaning	Dry cleaning or visit www.pietboon-care.nl
BS 5852 0	Pass

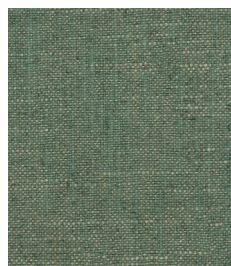
SAMPLES



TABBY 1



TABBY 2



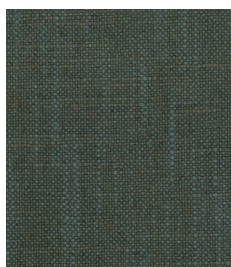
TABBY 4



TABBY 6



TABBY 7



TABBY 9



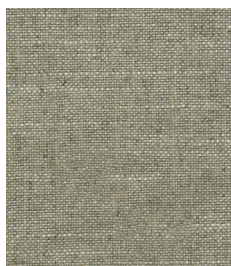
TABBY 11



TABBY 12



TABBY 16



TABBY 18

PIETBOON

TWILL FABRICS P2

FEATURES

Composition	63% Cotton, 37% Polyester
Width	140 cm
Weight	703 g/lm
Abrasion	43.000 martindale
Colour fastness	4
Cleaning	Dry cleaning or visit www.pietboon-care.nl
BS 5852 0	Pass

SAMPLES



TWILL 49



TWILL 55



TWILL 3



TWILL 5



TWILL 63



TWILL 1



TWILL 2



TWILL 52



TWILL 23

PIETBOON

VELVETS

FABRICS P2

FEATURES

Composition	54% Polyacrylic, 28% Cotton, 12% Polyester, 6% Viscose
Width	140 cm
Weight	600 g/lm
Abrasion	20.000 martindale
Colour fastness	4-5 Deo. on colour
Cleaning	Dry cleaning or visit www.pietboon-care.nl

SAMPLES



VELVETS 016



VELVETS 004



VELVETS 008



VELVETS 014



VELVETS 010



VELVETS 011



VELVETS 013



VELVETS 005



VELVETS 017



VELVETS 007



VELVETS 015



VELVETS 006

PIETBOON

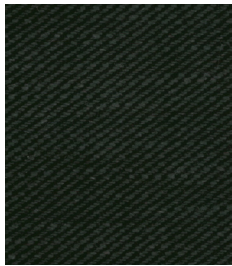
WEAVE

FABRICS P2

FEATURES

Composition	70% Viscose, 30% Linen
Width	140 cm
Weight	869 g/lm
Abrasion	25.000 martindale
Colour fastness	4-5 Deo. on colour
Cleaning	Dry cleaning or visit www.pietboon-care.nl
BS 5852 0	Pass
BS 5852 1	Pass

SAMPLES



WEAVE 19



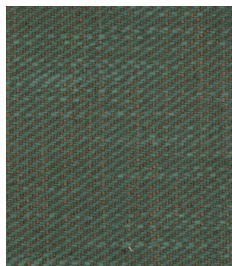
WEAVE 40



WEAVE 1



WEAVE 17



WEAVE 303



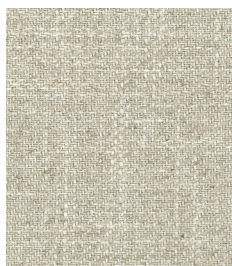
WEAVE 301



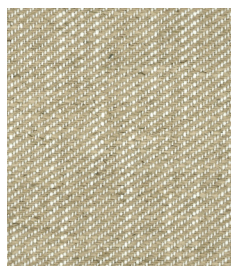
WEAVE 22



WEAVE 20



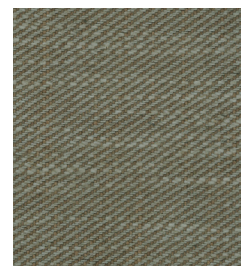
WEAVE 216



WEAVE 16



WEAVE 21



WEAVE 302

PIETBOON

COTTONS

FABRICS P1

FEATURES

Composition	100% Cotton
Width	140 cm
Abrasion	65.000 martindale
Colour fastness	5(1-8) Dep. on colour
Cleaning	Dry cleaning or visit www.pietboon-care.nl
CAL TB 117 test	Pass
BS 5852 0	Pass
BS 5852 1	Fail/Pass with after treatment
DIN EN ISO 1021 PART I	Pass
DIN EN ISO 1021 PART II	Fail
NFPA 260	Pass

SAMPLES



COTTONS 54



COTTONS 11



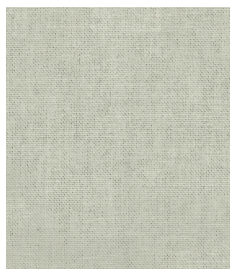
COTTONS 16



COTTONS 58



COTTONS 21



COTTONS 07



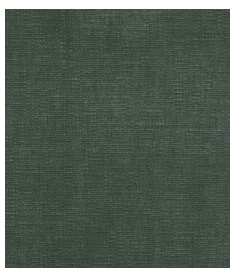
COTTONS 25



COTTONS 60



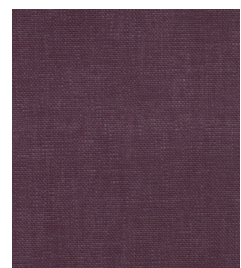
COTTONS 40



COTTONS 19



COTTONS 18



COTTONS 65

PIETBOON

COTTONS

FABRICS P1

SAMPLES



COTTONS 28



COTTONS 12



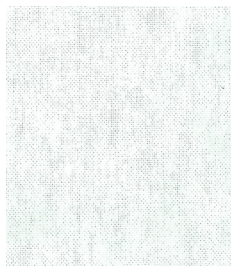
COTTONS 59



COTTONS 49



COTTONS 36



COTTONS 67



COTTONS 23

PIETBOON

BLOOM

HIGH PEROMANCE FABRICS P3

FEATURES

Composition	54% polyacrylic, 46% polyester
Width	140 cm
Weight	740 g/lm
Abrasion	100.000 martindale
Colour fastness	4/5
Cleaning	Machine wash 40 degrees celcius or visit www.pietboon-care.nl
CAL TB 117 test	unknown
BS 5852 0	unknown
BS 5852 1	unknown
DIN EN ISO 1021 PART I	unknown
DIN EN ISO 1021 PART II	unknown
NFPA 260	unknown

SAMPLES



BLOOM 01-407



BLOOM 02-413



BLOOM 01-405



BLOOM 03-404



BLOOM 04-406



BLOOM 05-403



BLOOM 06-411



BLOOM 07-410



BLOOM 08-409



BLOOM 09-408



BLOOM 10-402



BLOOM 11-401



BLOOM 12-412

PIETBOON

FOREST

HIGH PERFORMANCE FABRICS

FEATURES

NR.	01-01 03-05, 05-04, 07-03, 09-10, 11-09, 13-11, 15-02	02-17, 04-271, 06-272, 08-02, 10-276, 12-273, 14-274, 16-1000
COMPOSITION	100% PC	100% PC
WIDTH	140	140
WEIGHT	1080 G/LM	614 G/LM
ABRASION (MARTINDALE)	40.000	35.000
COLOUR FASTNESS	ISO 4-5	ISO 4-5
CLEANING	MACHINE WASH 40 DEGREES CELCIUS	MACHINE WASH 40 DEGREES CELCIUS
CALL TB 117	UNKNOWN	PASS
BS 5852 0	UNKNOWN	PASS
BS 5852 1	UNKNOWN	PASS
DIN EN ISO PART I	UNKNOWN	UNKNOWN
DIN EN ISO PART II	UNKNOWN	UNKNOWN
NGPA 260	UNKNOWN	UNKNOWN

SAMPLES



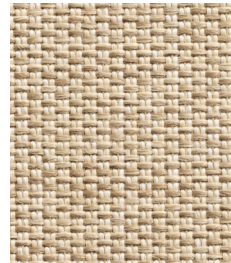
FOREST
01-01 **P3**



FOREST
02-17 **P2**



FOREST
03-05 **P3**



FOREST
04-271 **P2**



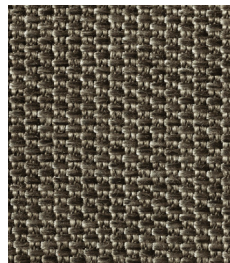
FOREST
05-04 **P3**



FOREST
06-272 **P2**



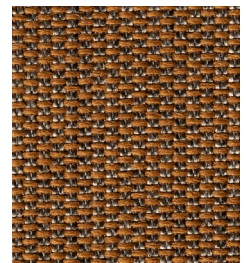
FOREST
07-03 **P3**



FOREST
08-02 **P2**



FOREST
09-10 **P3**



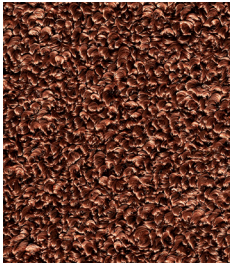
FOREST
10-276 **P2**

PIETBOON

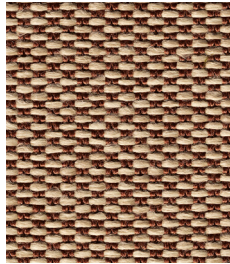
FOREST

HIGH PERFORMANCE FABRICS

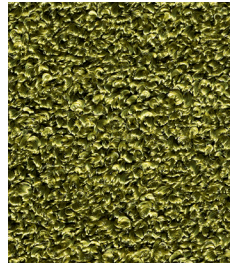
SAMPLES



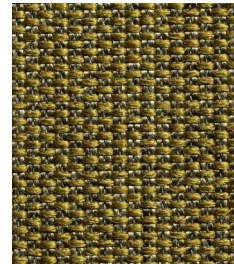
FOREST
11-09 **P3**



FOREST
12-273 W **P2**



FOREST
13-11 **P3**



FOREST
14-274 **P2**



FOREST
15-02 **P3**



FOREST
16-1000 **P2**