

MATERIAL ANTHOLOGY

GIOPAGANI

INDEX

FABRIC

DEDAR

MILANO

SCHWARZWALD	8
ALEXANDER	10
TIGER MOUNTAIN	12
SAXOPHONE	14
CHAPEAU	16
GRAND NATTÈ	18
PATCHWORK	20
NIMBUS	22
PLUSHY	24
TEMPERA	26
THELONIOUS	28

RUBELLI

RATTOPPATO	30
JAVA	32
SECOND FIRING	34
CHIAROSCURO	36
WOBBLE GRID	38
DERBY TOILE	40
NEXUS	42
FILIGRANA	44
SING	46

GIOPAGANI

TALENT	48
POP	50
ORION	52

LEATHER

SHINING	56
TIMELESS	58
VELVET	60
TOUCH	62
ROUGH	64

WOOD

WOOD	68
------	----

MARBLE

MARBLE	72
--------	----

METAL

METAL	76
-------	----

GLASS

GLASS	80
-------	----

CRAYON COLOR

CRAYON	84
--------	----

CARE & MANTENANCE

CARE & MANTENANCE	88
-------------------	----

BESPOKE SOUL

Each product comes from the encounter between an increasingly demanding international clientele in search of sophisticated personalized items, and a company driven by a passion for high craftsmanship, research and creative development.

We consider every product as tailor-made and unique. Design at GIOPAGANI is about capturing the right feeling for a particular project and the people whom we are designing for. Being a multidisciplinary design studio gives us the unique advantage of being able to take on any and every aspect that an aesthetic design may entail.

Thanks to our experience in the production of high-end design furniture, our style department is able to follow each client and focus on the best choice for the creation of unique pieces in relation to materials, processes, shapes, functions. The care and excellence of GIOPAGANI unique pieces arise from the synergy between creativity, technical knowledge and the skills of our production chain, expression of the best Italian industrial craftsmanship.

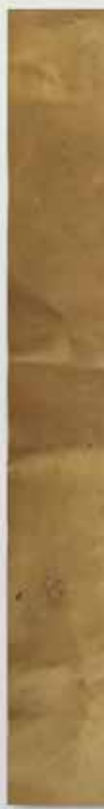
GIOPAGANI offers its expertise as a partner for special projects in the customization of its products to make them unique in formats and finishes, born from the specific needs of the client. From design to implementation, each phase is followed with the utmost care, and subjected to functional checks, set-up, finish, resistance to guarantee the final quality of the product.

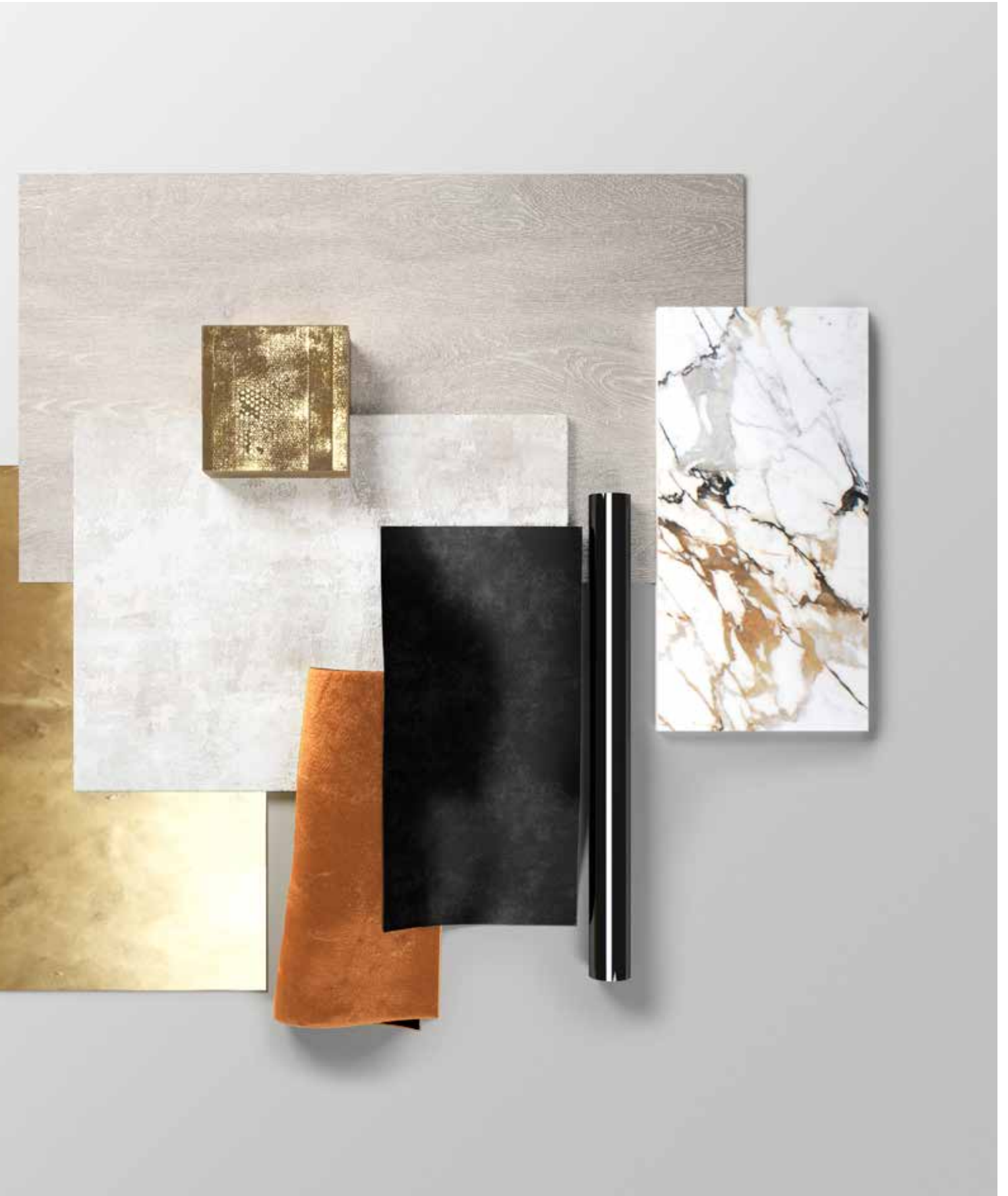
The GIOPAGANI material anthology is designed to give design lovers the inspiration to create objects and spaces that represent their own style. The selection features bold and statement-making finishes that capture the attention and set the mood of the space, enhancing the design features.

Continuously listening to the needs of its clients, always looking for something exclusive, GIOPAGANI provides further possibilities to customize its upholstery, by partnering with the luxury textile editors Dedar, Rubelli and "GIOPAGANI Selection" that give access to their infinite catalogs of textures and patterns to tailor all of our products even beyond our selection.

The quality and preciousness of the unique pieces created are the result of creative and technical processes put in place to face requests of every degree of complexity. Not only a visual experience but also a tactile and sensorial one. A journey through aesthetics and technique that leads to the discovery of unique materials.

Combining contrasting ideas, GIOPAGANI's collection of juxtaposing concepts crafts evocative narratives that move and inspire.





FABRIC

SCHWARZWALD

DEDAR

MILANO



A linen fabric, whose pictorial personality is defined by the printed reproduction of a 17th century design, which transforms into a contemporary tapestry to revive one of the noblest forms of the textile tradition, thanks to a modern-day sensitivity.

CAT. : A

Composition: 60% Viscose, 16% Linen, 13% Cotton, 6% Polyester, 5% Polyacrylic

Martindale: 15.000

Pattern Repeat: width 138cm - height 88cm





VERDURE



AUTOMNE

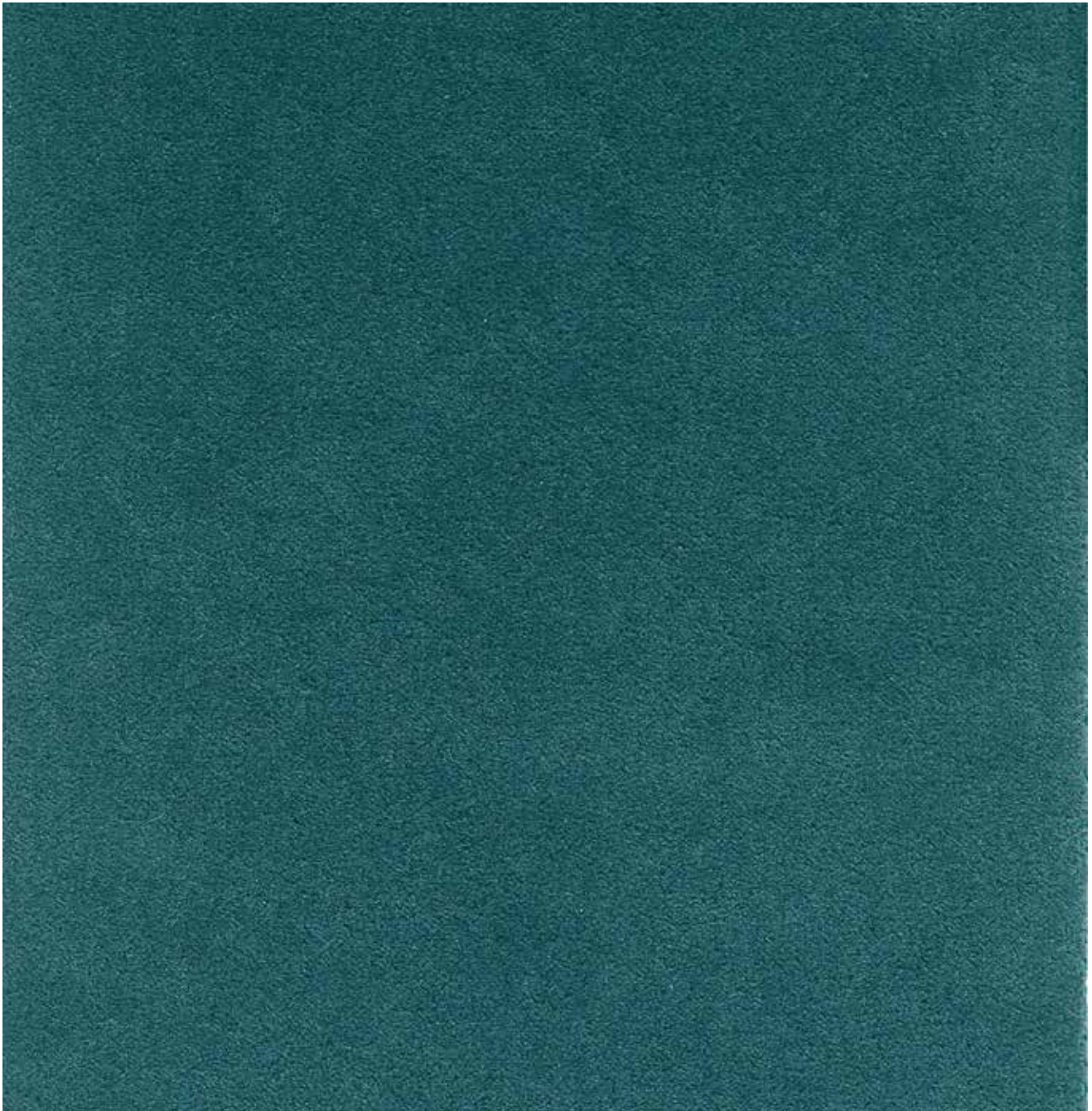


BLEU NUIT

ALEXANDER

DEDAR

MILANO



Extra-fine Australian merino wool interprets a densely woven long-pile velvet that is yarn-dyed and soft to the touch. Long-lasting and resistant, Alexander is ideal for medium/intensive use seating.

CAT. : A

Composition: 54% Fleece wool, 34% Cotton,
12% Polyester

Martindale: 30.000





MATTONE



TULIPE



ARGENTO



PERLE



AVORIO



ARGILE



TAUPE



NERO



ANTRACITE



BEIGE



TORTORA



FLAMANT ROSE



GRENADE



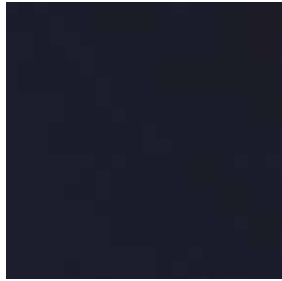
OLIVA



LODEN



PETROLE



NOTTE



DORURE



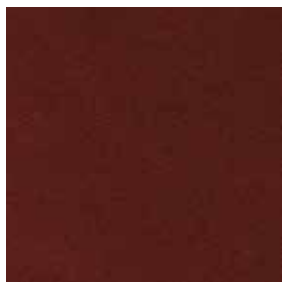
CELADON



JADE



PAON



AMARANTE



TABACCO



NAKED PEACH



GLACIER



STORM BLUE

TIGER MOUNTAIN

DEDAR

MILANO



A jacquard velvet with a strong personality and expressive capacity, originally inspired by Tibetan carpets but open to personal interpretations. A versatile fabric that lends itself to seating applications.

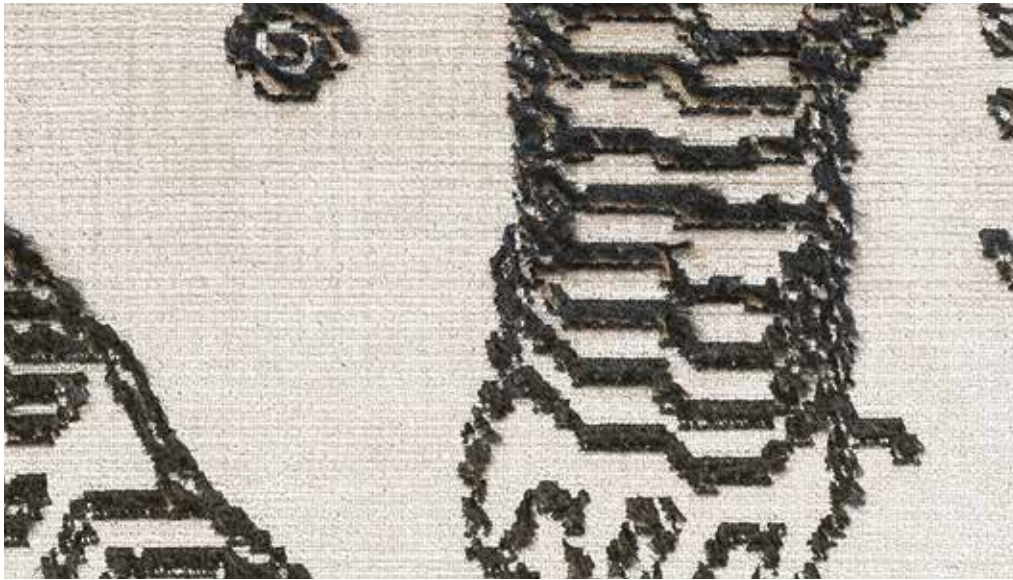
CAT. : A

Composition: 63% Viscose, 37% Cotton

Martindale: 40.000

Pattern Repeat: width 69cm - height 84,5cm

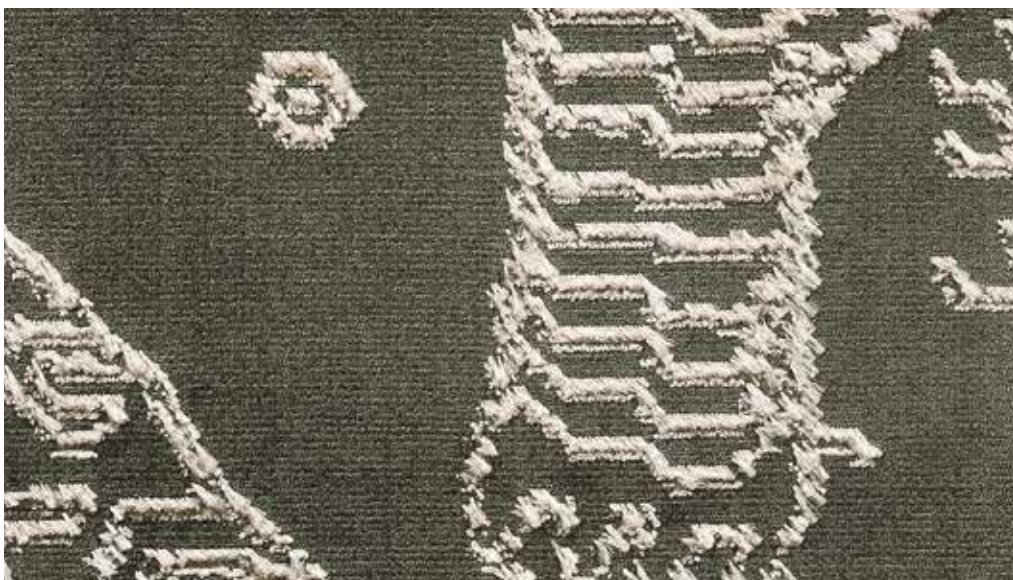




GRAPHITE



FAUVE

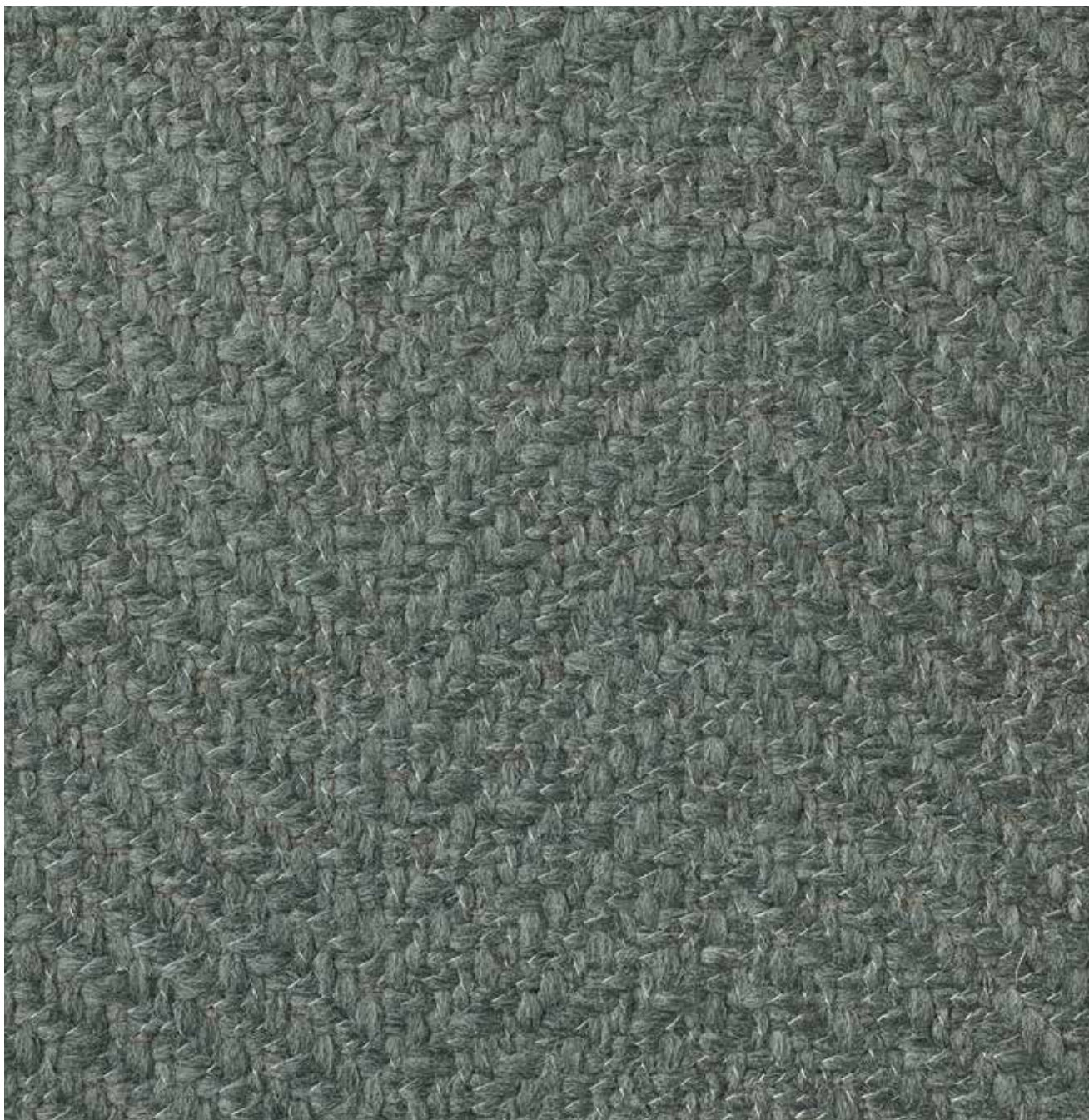


PETRIFIED WOOD

SAXOPHONE

DEDAR

MILANO



A chevron made from Australian virgin wool with a fresh sartorial look. It is a hardwearing fabric, with a distinctive textural quality, in which structure takes centre stage.

CAT. : B

Composition: 43% Wool, 32% Cotton,
25% Polyacrylic

Martindale: >40.000





POLAR WHITE



LINEN

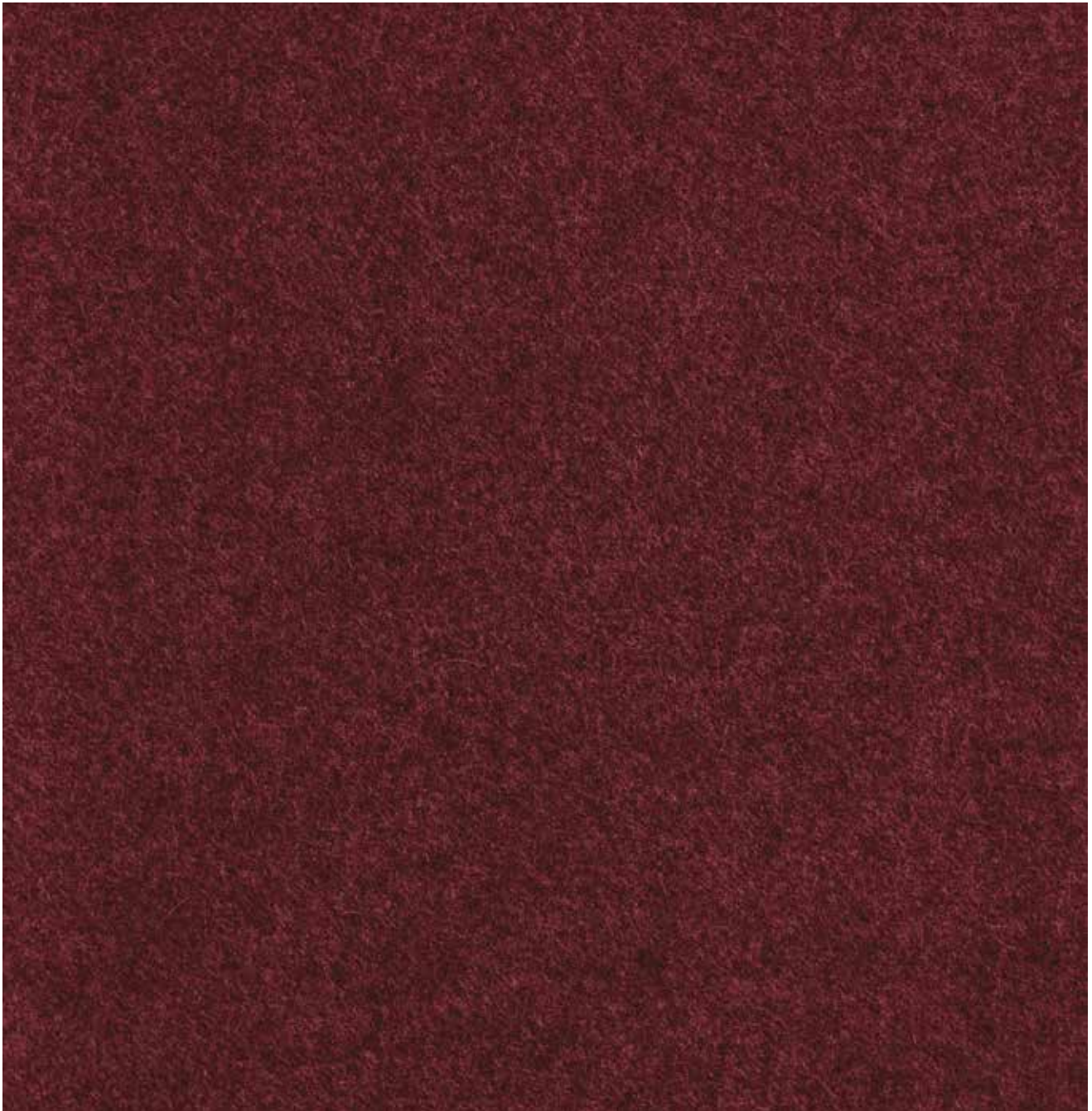


LODEN

CHAPEAU

DEDAR

MILANO



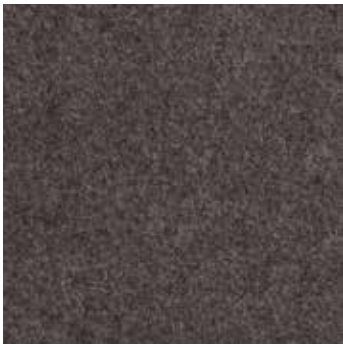
A reversible sartorial cloth in pure virgin wool, inspired by traditional wool cloaks and hats. Fruit of a complex manufacturing process, this fabric is bulky, resistant to abrasion and hardwearing.
For medium-intensive seating applications.

CAT.: B

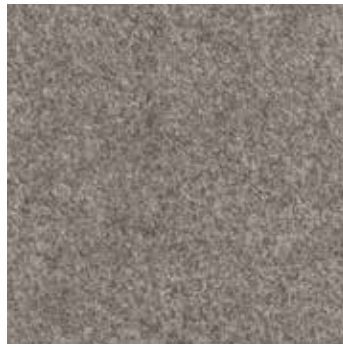
Composition: 100% Fleece wool

Martindale: 40.000





EBANO



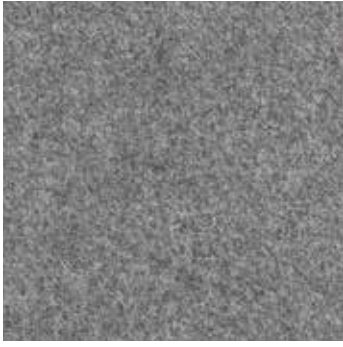
TAUPE



SILEX



PERLA



ARDESIA



INDIGO



MIRTILLO



BORDEAUX



PAPRIKA



SENAPE



LODEN



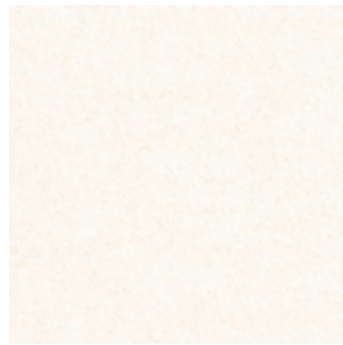
CELADON



ROSA



BEIGE



AVORIO



CAMELLO



TABACCO

GRAND NATTÈ

DEDAR

MILANO



Made from brushed cotton braid of different dimensions and woven on special looms that allow for the use of such elaborate materials. The high quality of this hardwearing brushed cotton explains its delicate sheen and soft hand. The interlacings on the reverse side add stability to the fabric when being made up. Its weight and resistance to abrasion make it ideal for upholstery applications.

CAT. : B

Composition: 100% Cotton

Martindale: 20.000





BIANCO



NATURALE

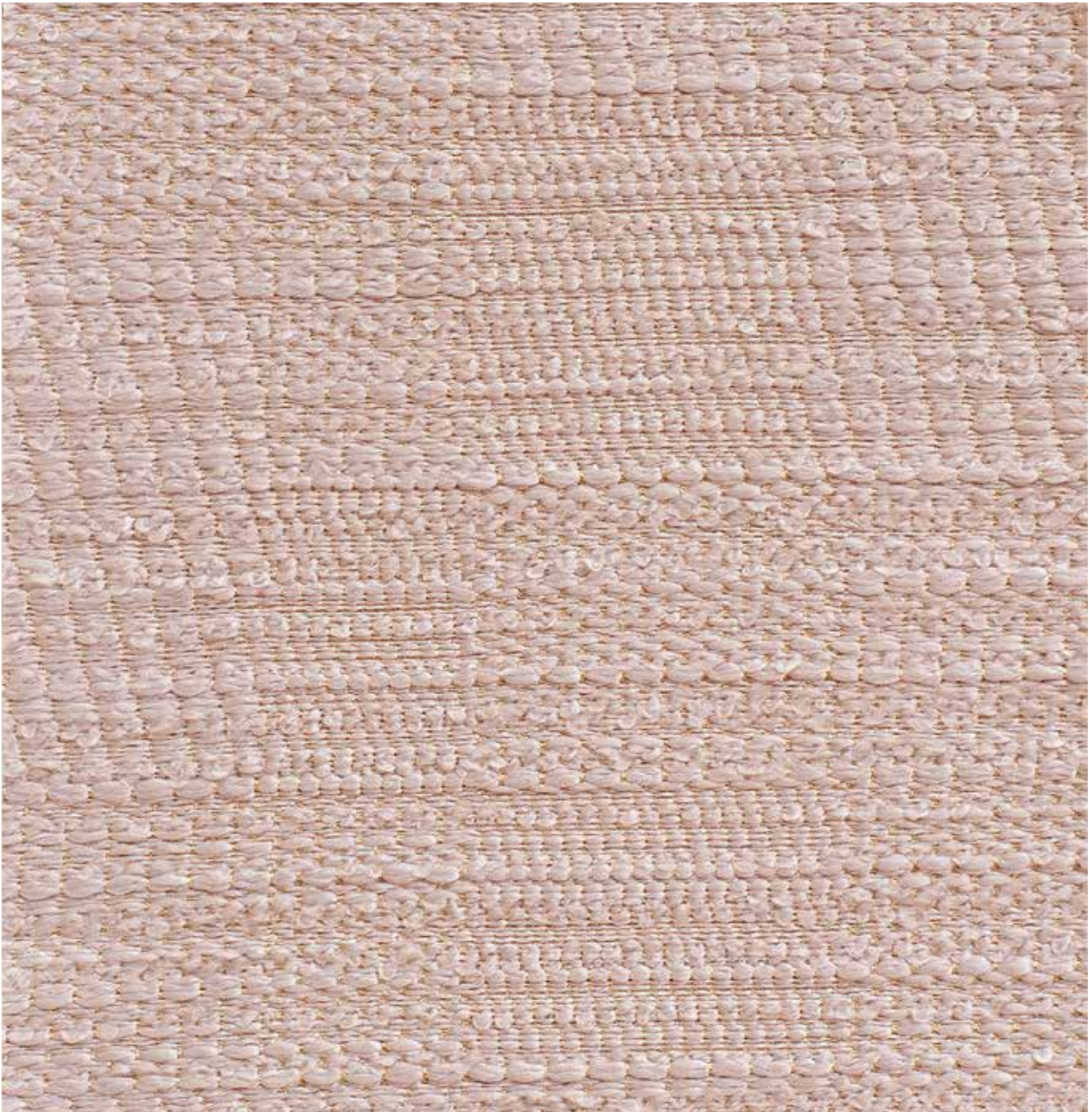


QUASINERO

PATCHWORK

DEDAR

MILANO



A jacquard fabric with a fine metallic warp and 3 weft threads of varying thicknesses to create a sumptuous textural effect with the typical characteristics, thickness and overstitching of haute couture fabrics. A versatile fabric for use as curtains and seating intended for intensive use.

CAT. : B

Composition: 60% Polyester FR Trevira, 40%
Polyester FR

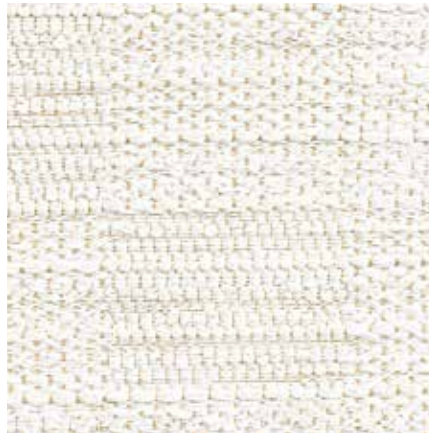
Martindale: 50.000

Treatment: Flame retardant





PEARL



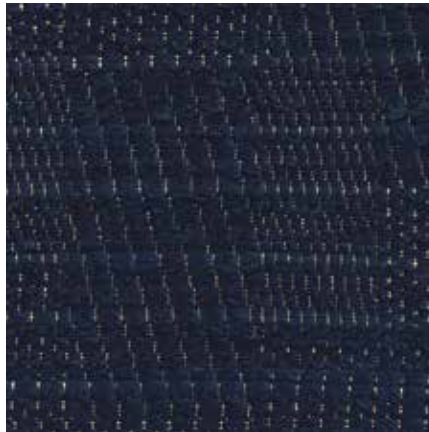
IVORY



TESTA DI MORO



BLACK



MARINE



AZUR



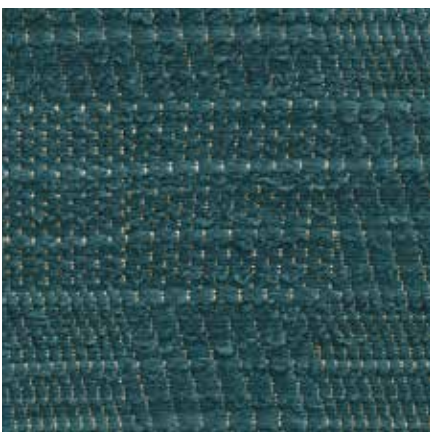
TITTI



ROSE



CHATAIGNE



PAVONE

NIMBUS

DEDAR

MILANO



This warm and resistant wool bouclé is full of spontaneity and softness. The delicate colour palette, including natural tones and darker shades, enhances the intrinsic nature of wool.

CAT. : C

Composition: 70% Wool, 15% Cotton,
10% Polyamide, 5% Polyester

Martindale: >40.000





TESTA DI MORO



TOPO



TORTORA



NUDE



BREBIS



NUVOLA



LODEN

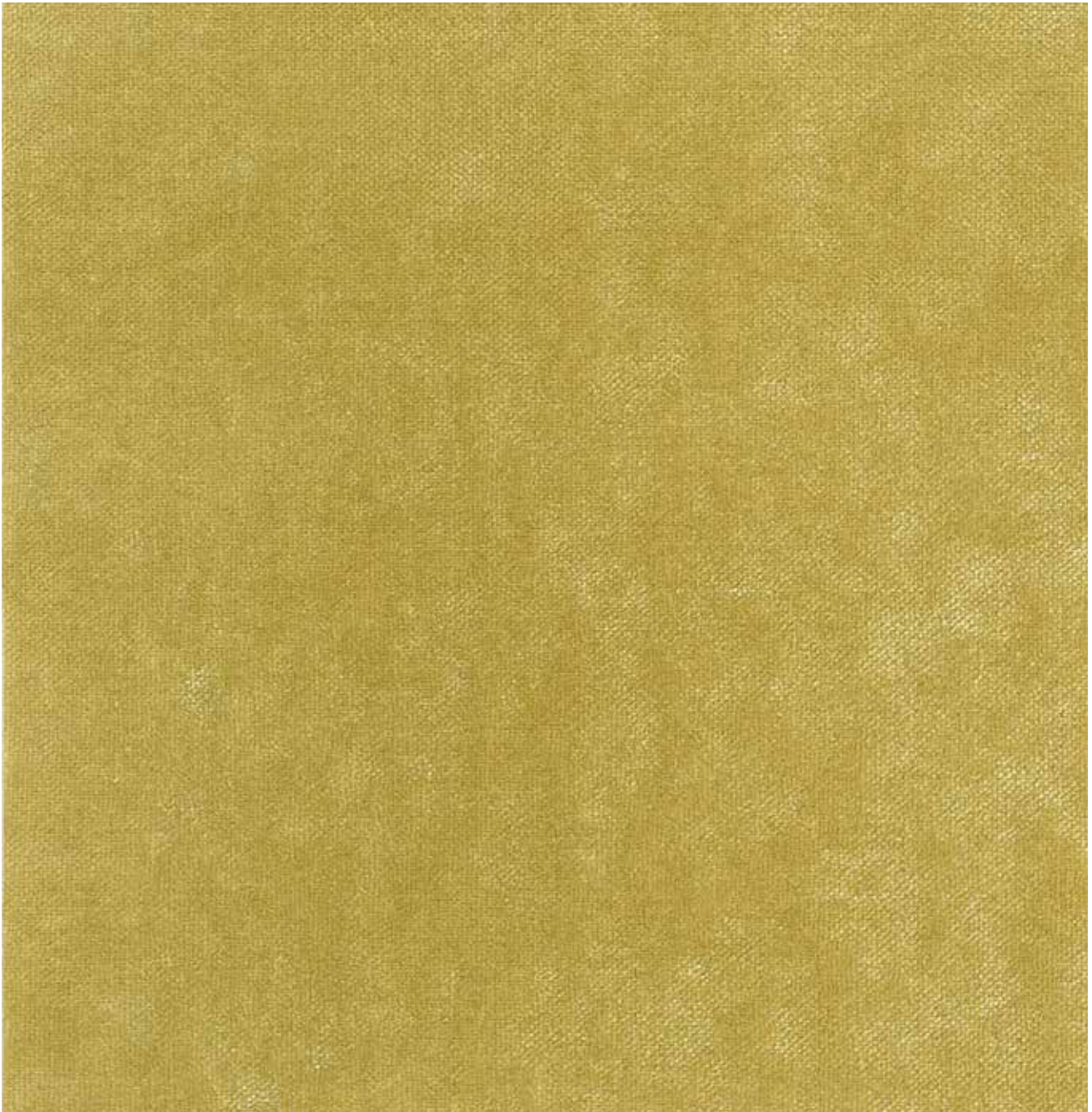


ARDESIA

PLUSHY

DEDAR

MILANO



Extremely wear resistant, this fire-retardant and washable velvet has a distinctive crushed-pile effect and a pleasingly soft hand.

CAT. : C

Composition: 100% Polyester FR

Martindale: 100.000

Treatment: Flame retardant





NERO



SABBIA



BRUMA



OMBRA



NEVE



COGNAC



PRUGNA



AUBERGINE



CIELO



LICHENE



ARGENTO



SOURIS



ARDESIA



TESTA DI MORO



CITRINE



AMBRE



DIVA



GRIOTTE



CARDINALE



SHOKING



ENCRE



BLEU DE PRUSSE



PETROLE



OLIVE



ABSINTHE



CELADON



PERSIA



LINO

TEMPERA

DEDAR

MILANO



A bulky panama weave (1kg/lm) with washed effect, woven in pure long-fibre linen sourced in Europe. Italian weaving expertise and an accurate hand-crafted dyeing process have produced vibrant variations combined with depth of colour. Tempera evokes the charm of a vintage garment to which the passing of time has imparted character, while maintaining its original quality and beauty intact. Hardwearing and versatile, Tempera is suited for seating applications and lends itself also to curtains.

CAT. : C

Composition: 100% Linen

Martindale: 28.000

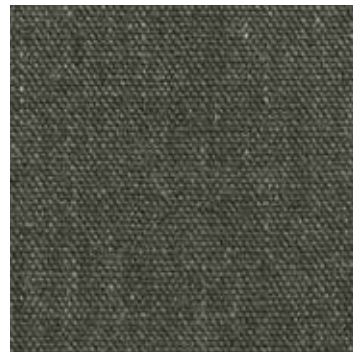




PERLA



ARDESIA



OLIVA



SENAPE



ROUSSILLON



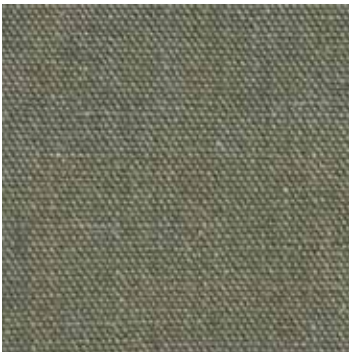
OTTANIO



DENIM



INDIGO



LAURIER



BOSCO



TABACCO



NATURALE



LINO



NUDE



CANYON



AUBERGINE



MIRTILLO

THELONIOUS

DEDAR

MILANO



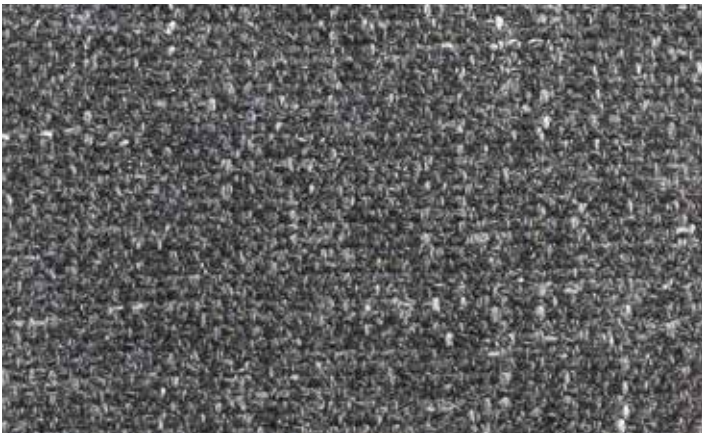
A rich linen canvas made from a composite yarn, in which the differently coloured fibre blend gives it a unique mélange effect. Thelonious has all the distinctive irregularities of natural fibres, combined with an excellent resistance to abrasion.

CAT. : D

Composition: 35% Polyester, 34% Linen, 20% Cotton,
7% Polyester, 4% Polyacrylic

Martindale: >40.000





ARDESIA



CENERE



PERLA



AVORIO



NATURALE



CAMMEO



GIUNCO



CALCARE

RATTOPPATO

RUBELLI



Textured velvet, with viscose pile. Reproduction of the original fabric designed by Gio Ponti and hand woven by Rubelli in 1934 for the Biennale of decorative art. A reinterpretation of the centuries-old velvet weaving technique. Suitable for light use.

CAT. : A

Composition: 50% Cotton, 50% Viscose

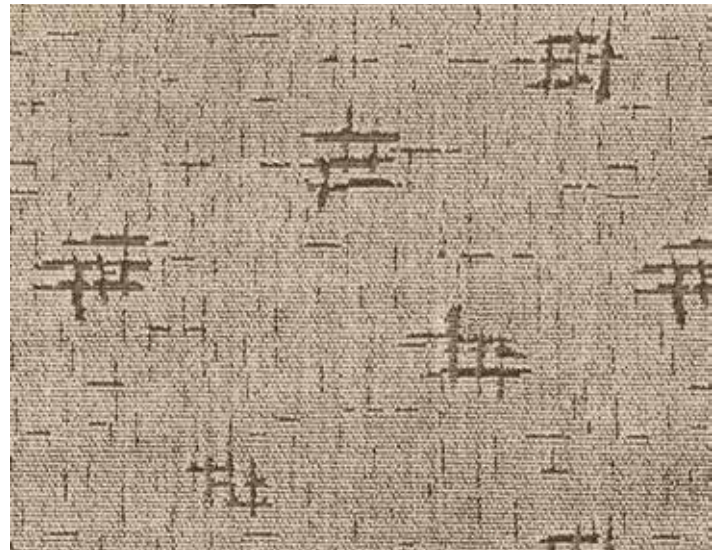
Usage: Light Use

Pattern Repeat: width 17cm - height 14,5cm

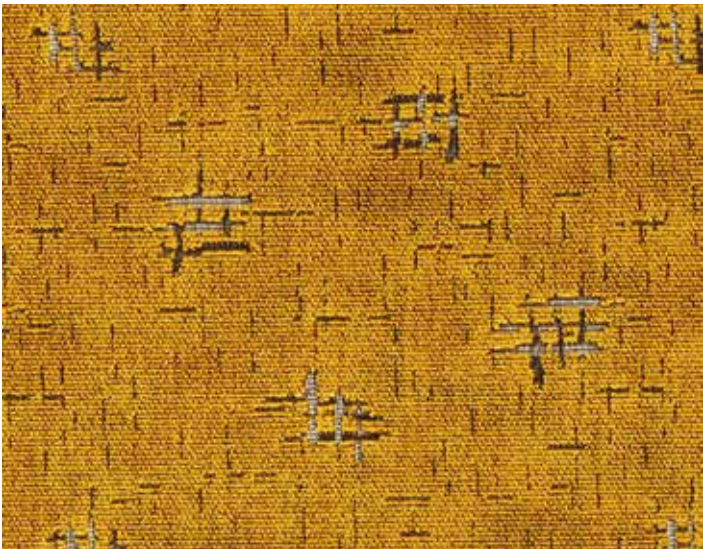




SABBIÀ



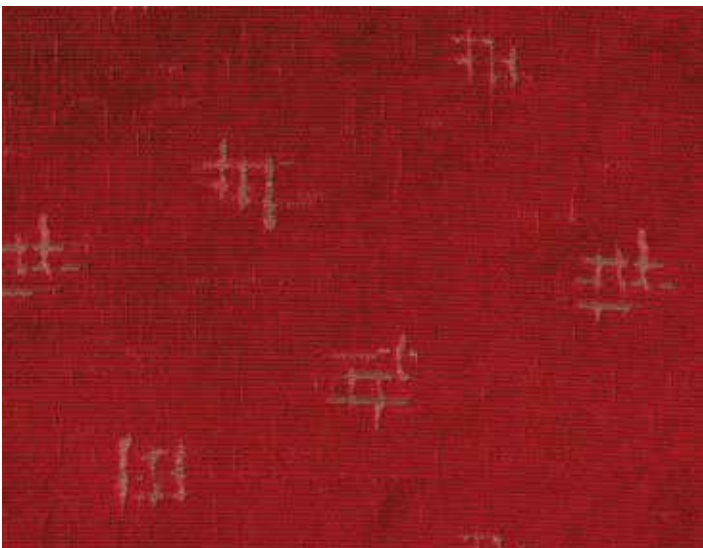
VISONE



BRONZO



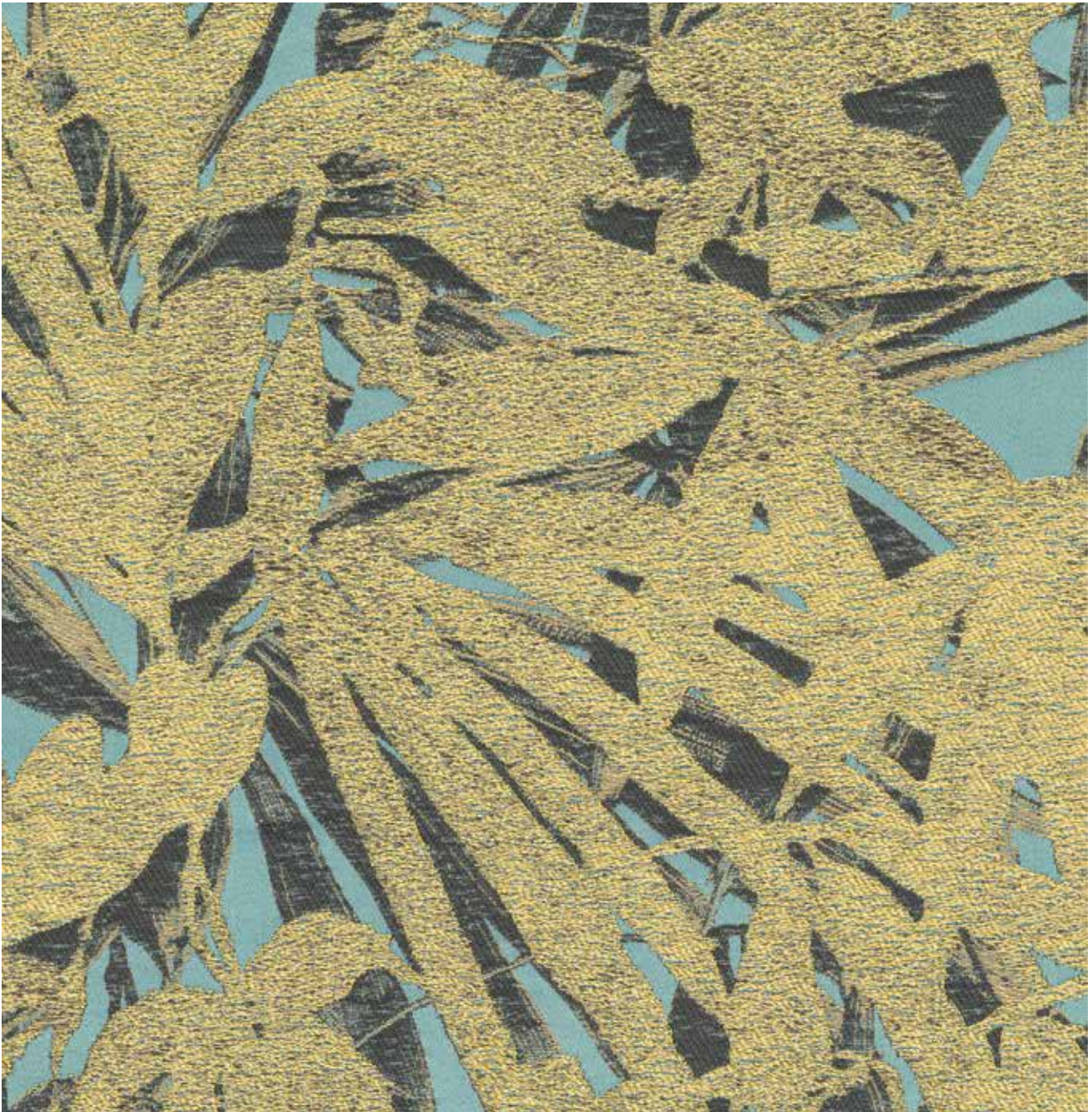
ARDESIA



RUBINO

JAVA

RUBELLI



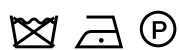
A play on light and shade, on the overlapping of shiny and matte silhouettes reminiscent of Japanese lacquer. Plant elements with graceful shapes, possibly Kentia palms, stand out luminous in the foreground. Suitable for light use.

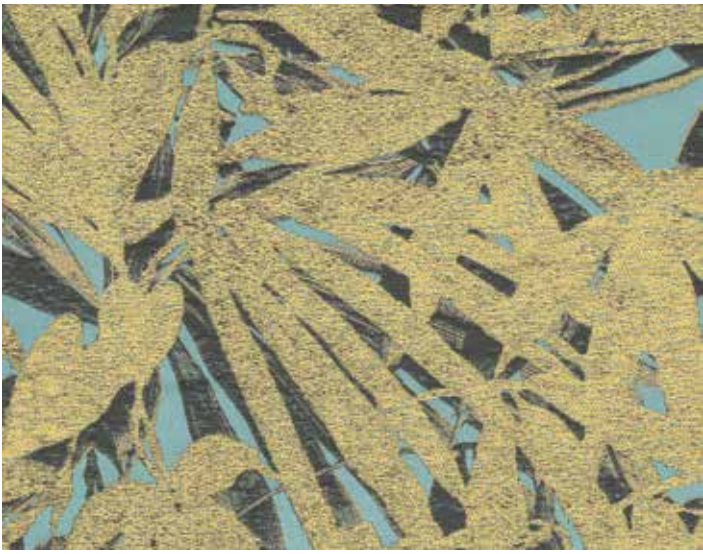
CAT. : C

Composition: 28% ECO-Polyamide,
25% ECOViscose, 25% Acrylic,
ECO-Viscose

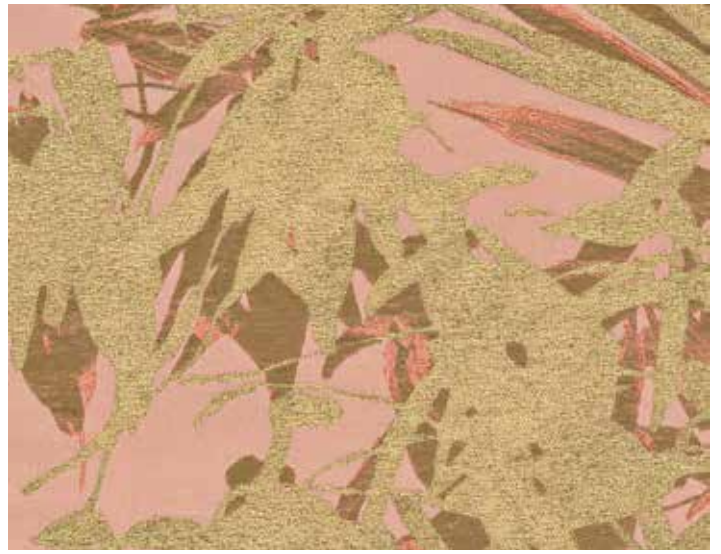
Usage: Light Use

Pattern Repeat: width 67,5cm - height 97cm





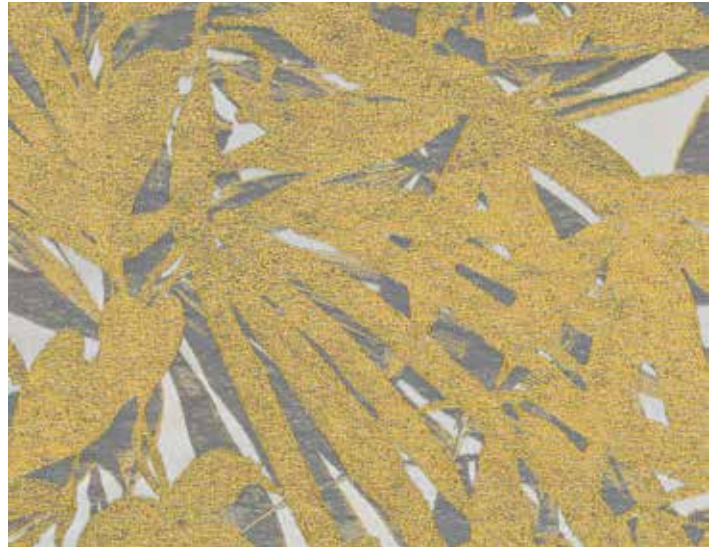
ACQUA



ROSA



NERO



ARGENTO



AVORIO

SECOND FIRING

RUBELLI



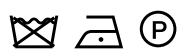
A jacquard fabric of great visual impact which belongs to “Second Firing”, a capsule collection designed by Peter Marino. While the patterns and texture come from Dalpayrat ceramics, many of the colours are just the same as in the paintings of Paolo Veronese, a Venetian painter much loved by Peter Marino. Suitable for decoration and upholstery, it is made from eco-nylon in the warp and cotton in the weft. To highlight the shiny effect of the ceramic glazes, metallic weaves have also been added.

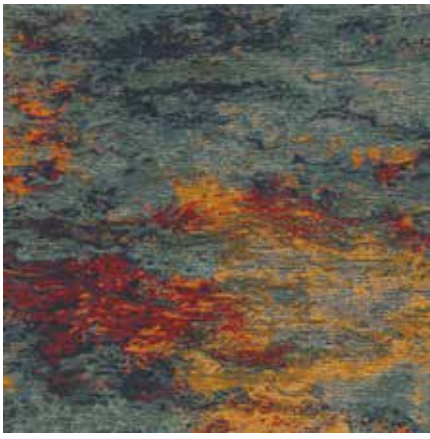
CAT. : A

Composition: Cotton, Eco-Polyamide,
Viscose, Polyimide

Usage: Normal Use

Pattern Repeat: width 140cm - height 97cm





DALPAYRAT GLAZE



RIFLESSI DI LUCE



RIFLESSI SCURI



APOTEOSI DI VENEZIA



BLUE TIGER



ACQUA LUMINOSA



ACQUA PROFONDA



DALPAYRAT BLUE



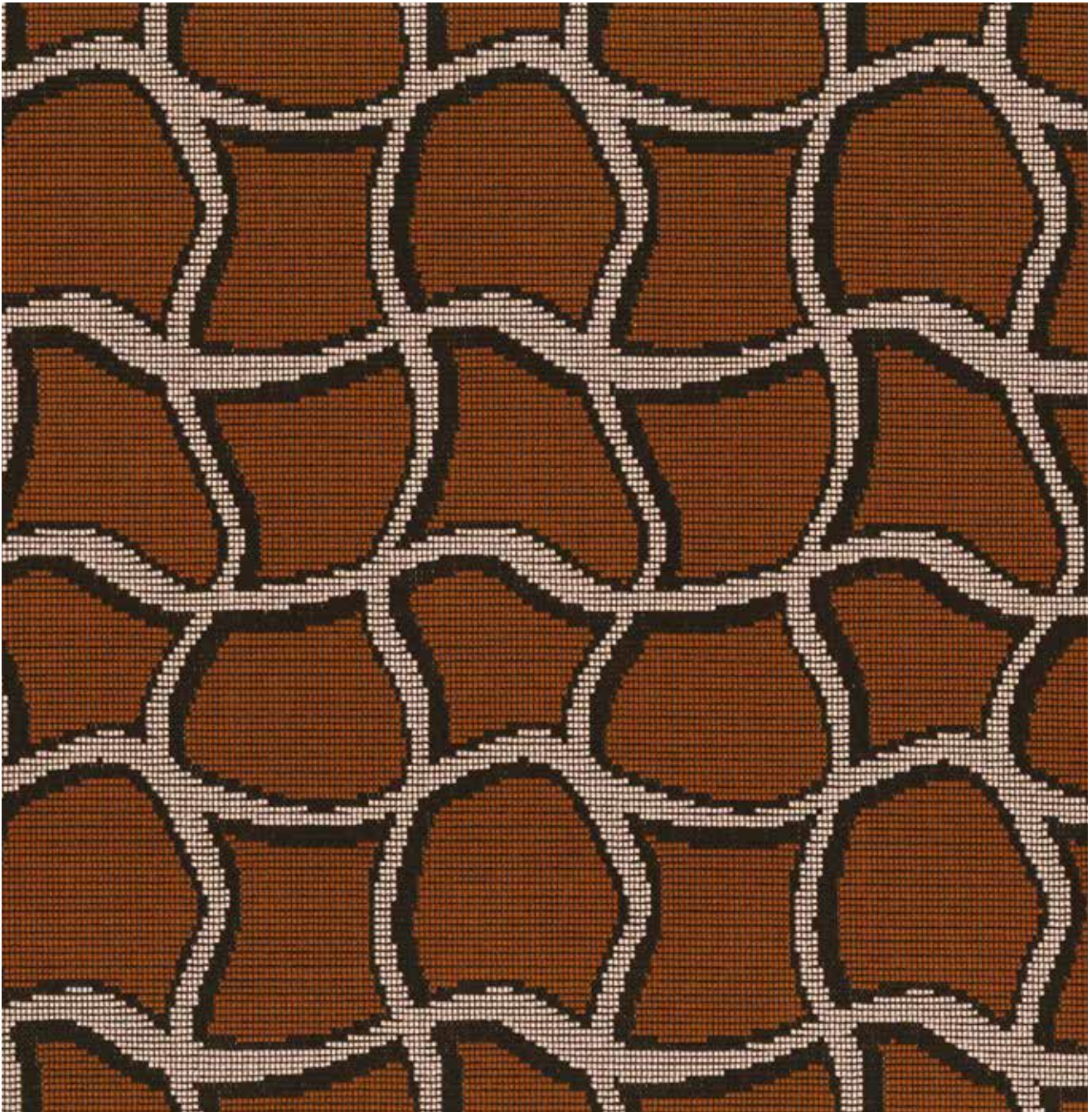
GREEN TIGER



DALPAYRAT GREEN

WOBBLE GRID

RUBELLI



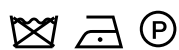
A reimagined check: less formal, more free-flowing and fun. Whilst I love old chintzes and faded stripes, I also love a geometric pattern, particularly bold ones such as this, which to me feels rather 1970s. A special jacquard technique that simulates the effect of épinglé velvets and which produces a very resistant yet at the same time draping fabric.

CAT. : C

Composition: 92% Viscose, 8% Polyamide

Martindale: 55.000

Pattern Repeat: width 10cm - height 17cm

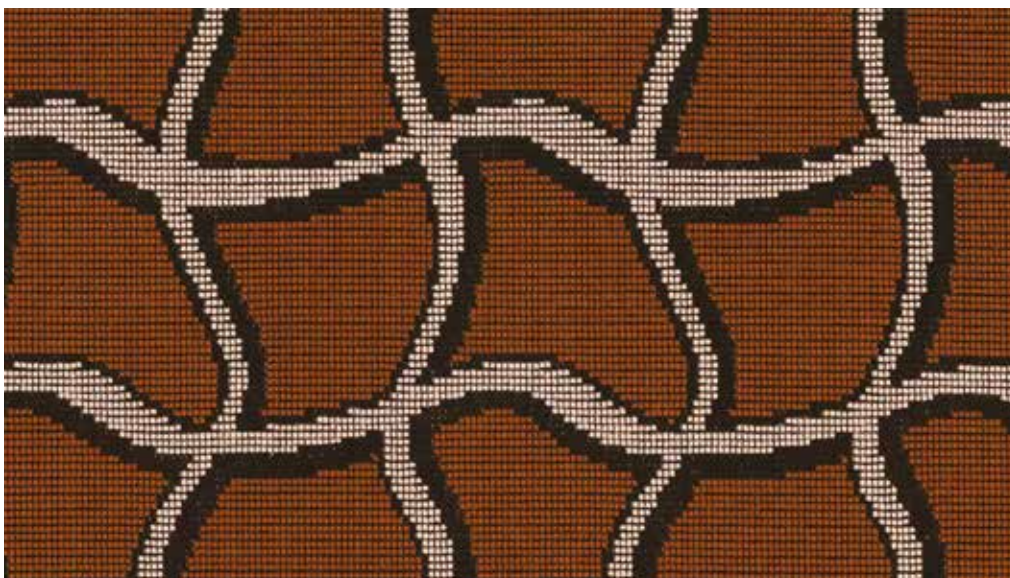




EMERALD



RED



BROWN

DERBY TOILE

RUBELLI



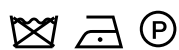
The starting point for this jacquard is a toile de Jouy, since ever the detailed pattern par excellence. The 8 versions of a highly detailed bucolic hill landscape evoke different seasons, different times of day, different states of mind.
Suitable for decoration and upholstery.

CAT. : C

Composition: 69% Cotton, 31% Eco-Polyamide

Martindale: 25.000

Pattern Repeat: width 67,5cm - height 32cm





AVORIO



TALPA



ORO



VERDE



ACQUA



BLU



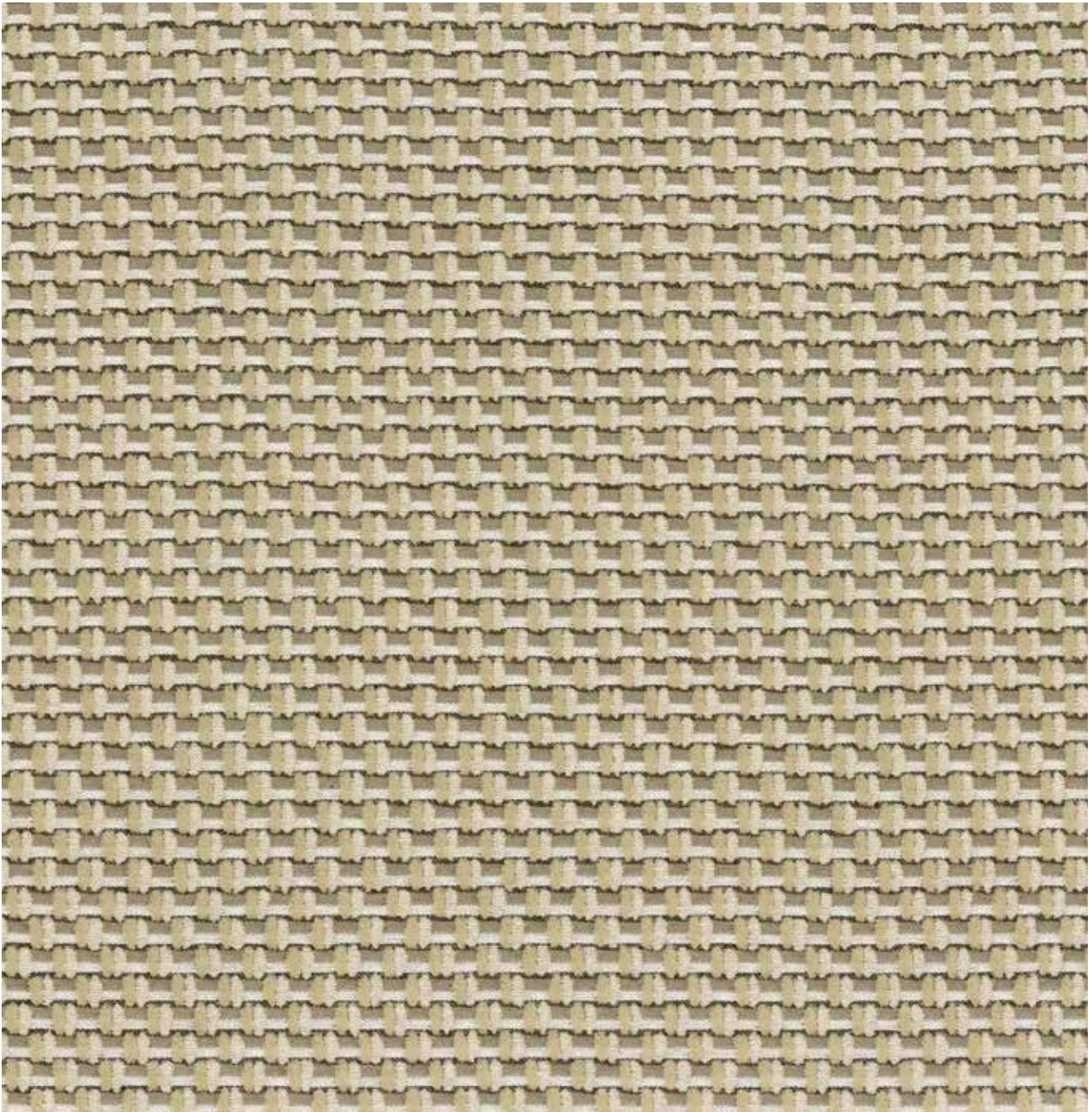
ROSA



ROSSO

NEXUS

RUBELLI

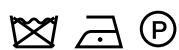


The pattern of the matelassé Nexus imitates a texture of thick threads in three colours. It has a warp in evo nylon, while one of the wefts is made by recovering waste (the yarns obtained from false selvages) from the Rubelli mill: an example of recycling. Suitable for upholstery.

CAT. : C

Composition: 42% Viscose, 22% Cotton RG,
21% Eco-Polyamide, 10% Polyester

Martindale: 35.000

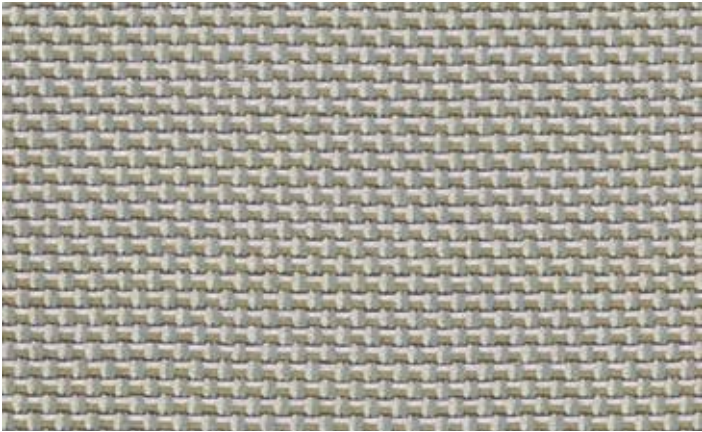




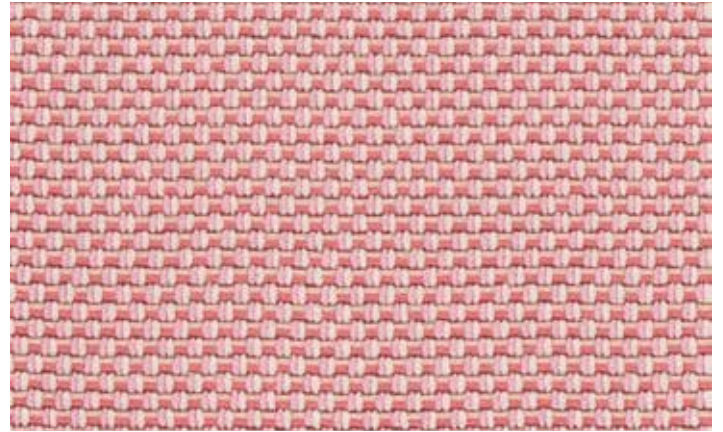
AVORIO



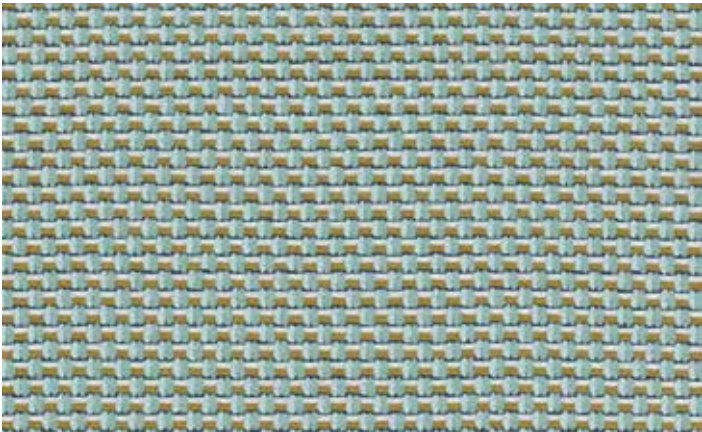
PAGLIA



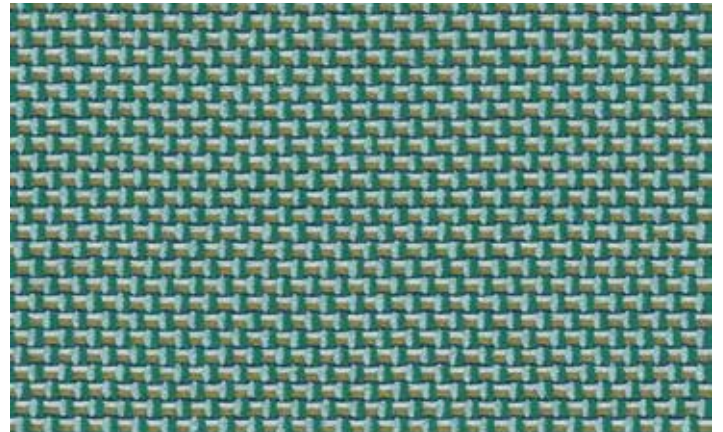
ARGENTO



PESCO



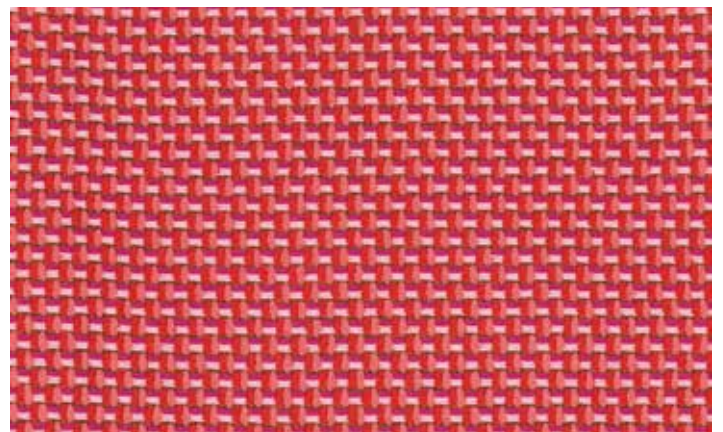
ACQUA



LAGUNA



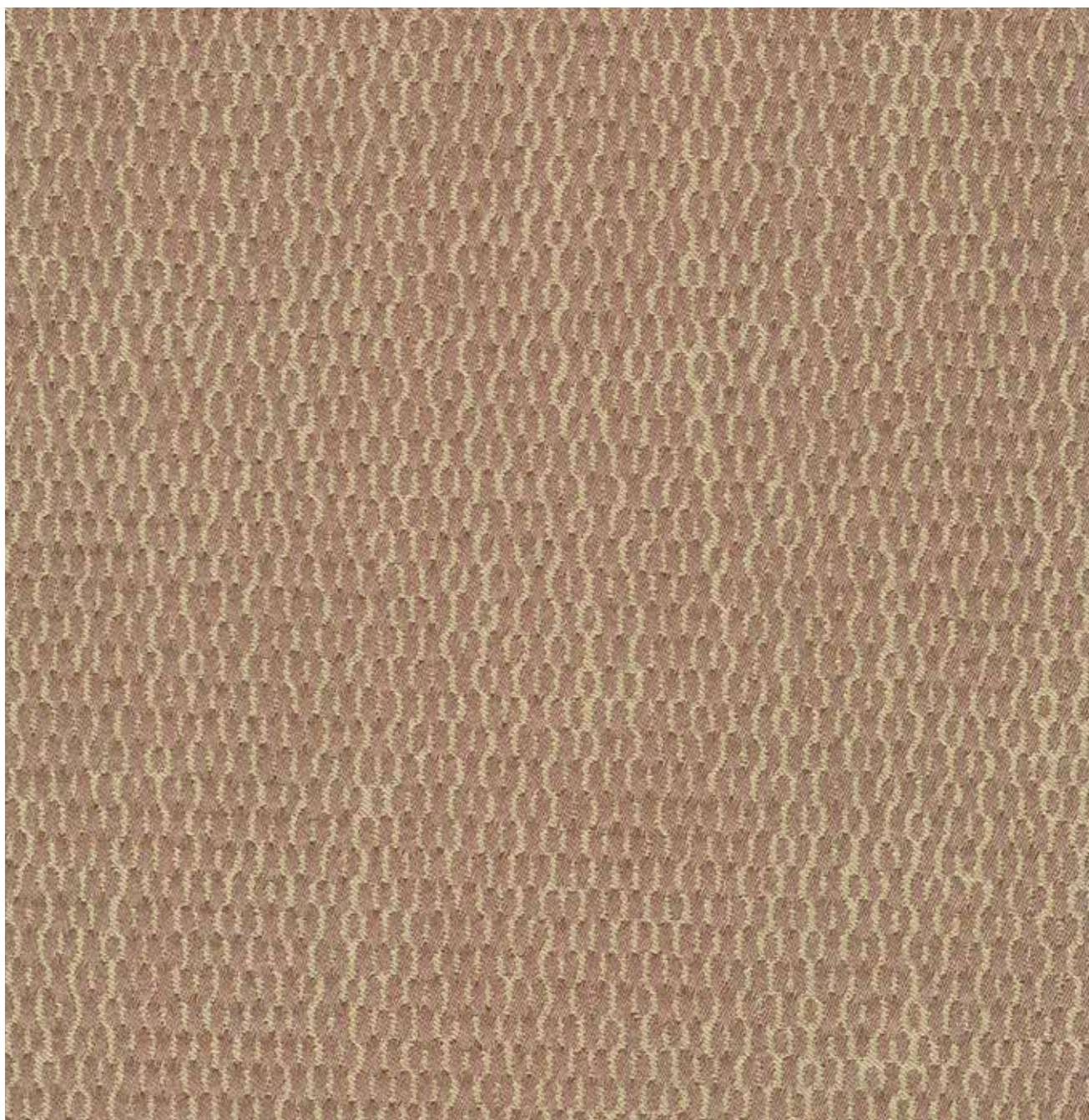
BLU



CORALLO

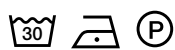
FILIGRANA

RUBELLI



Faux uni double face, flame retardant in Trevira CS.
A fabric with a micro pattern, which is significant to the lattice working of metals.
Suitable for upholstery.

CAT. : D
Composition: 100% Polyester Trevira CS
Martindale: 25000
Pattern Repeat: width 67,5cm - height 72cm
Treatment: Flame retardant





AVORIO



CORDA



TIGLIO



PESCO



TABACCO



MORO



ORO



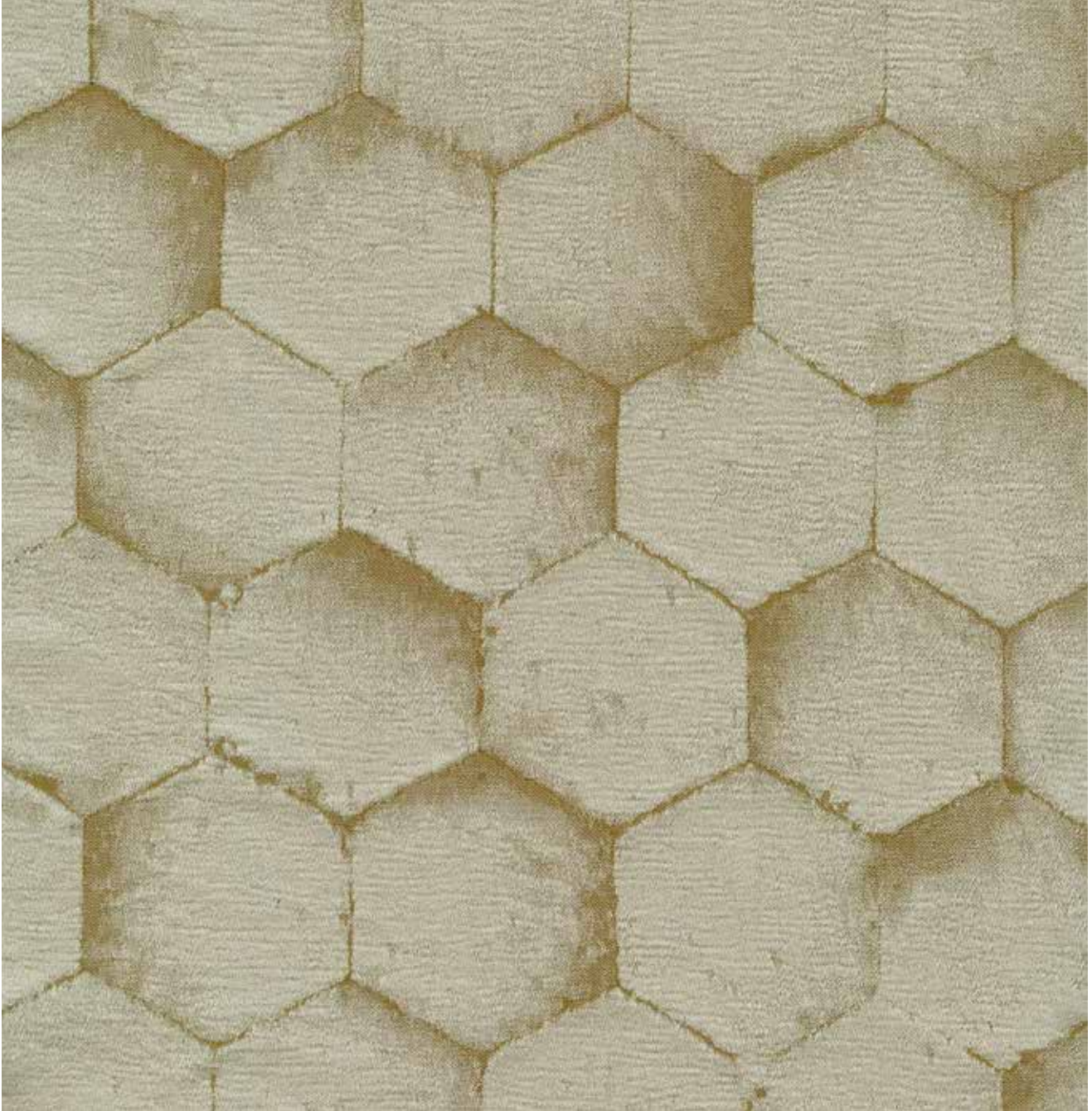
TIBET



PAVONE

SING

RUBELLI



Featuring an elegant geometric pattern, it shows a decoration which is the textile reinterpretation of the ceramic ornamentation of the mausoleum of Cem Sultan in Bursa, dating back to the end of the fifteenth century. Suitable for upholstery.

CAT. : D

Composition: 56% Polyester, 44% Polyamide

Martindale: 45000

Pattern Repeat: width 33,8cm - height 29cm





AVORIO



CORDA



ARGENTO



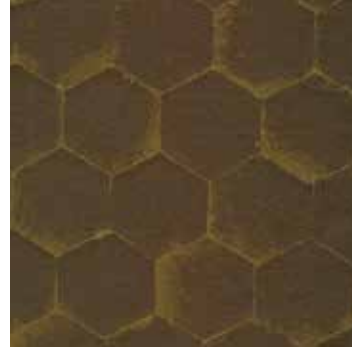
ARGILLA



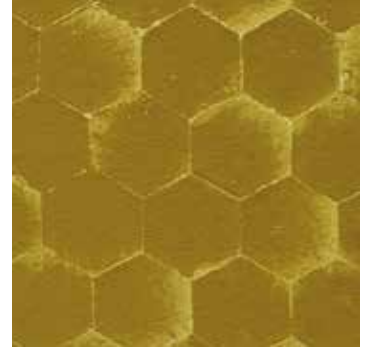
SABBIA



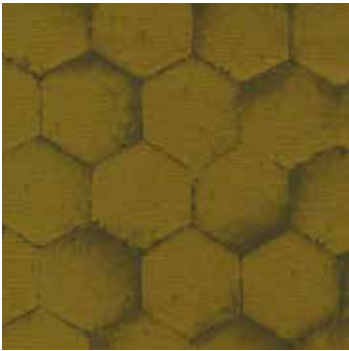
TIGLIO



EBANO



ORO



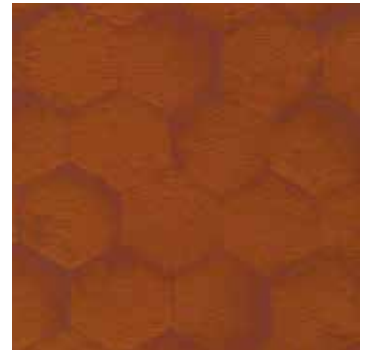
OSSIDO



MANGO



ARANCIO



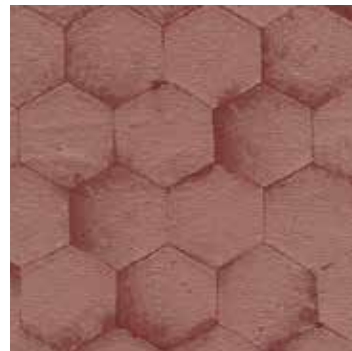
COTTO



ROSSO



TIBET



LEGNO DI ROSA



PELTRO



IRIS



LAGO

TALENT

GIOPAGANI

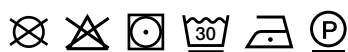


Talent, which has a casual, sporty tweed look, can be obtained in a comprehensive range of colours produced with modern natural dyes. It is also very hard-wearing and easy to clean, to withstand the bustle of family life - traces of chocolatey hands or spilt red wine are easily dealt with.

CAT. : E

Composition: 100% Polyester

Martindale: 100000





194



556



585



587



595



596



665



694



756



784



811



814



886



887



891



893



895



896



956



958



981



992



993



994



995



997



998

POP

GIOPAGANI



POP is part of our series of durable, easy-to-clean upholstery fabrics. Its special finishing gives it all the properties a simple upholstery fabric needs to have. The thick panama fabric is created using a light melange material in warp and weft and is available in a wide range of fresh, vibrant colours.

CAT. : E

Composition: 85% Polyester, 15% Cotton

Martindale: 100000





114



226



337



446



447



448



557



558



666



668



715



767



776



777



800



812



881



883



887



892



962



973



980



993



995



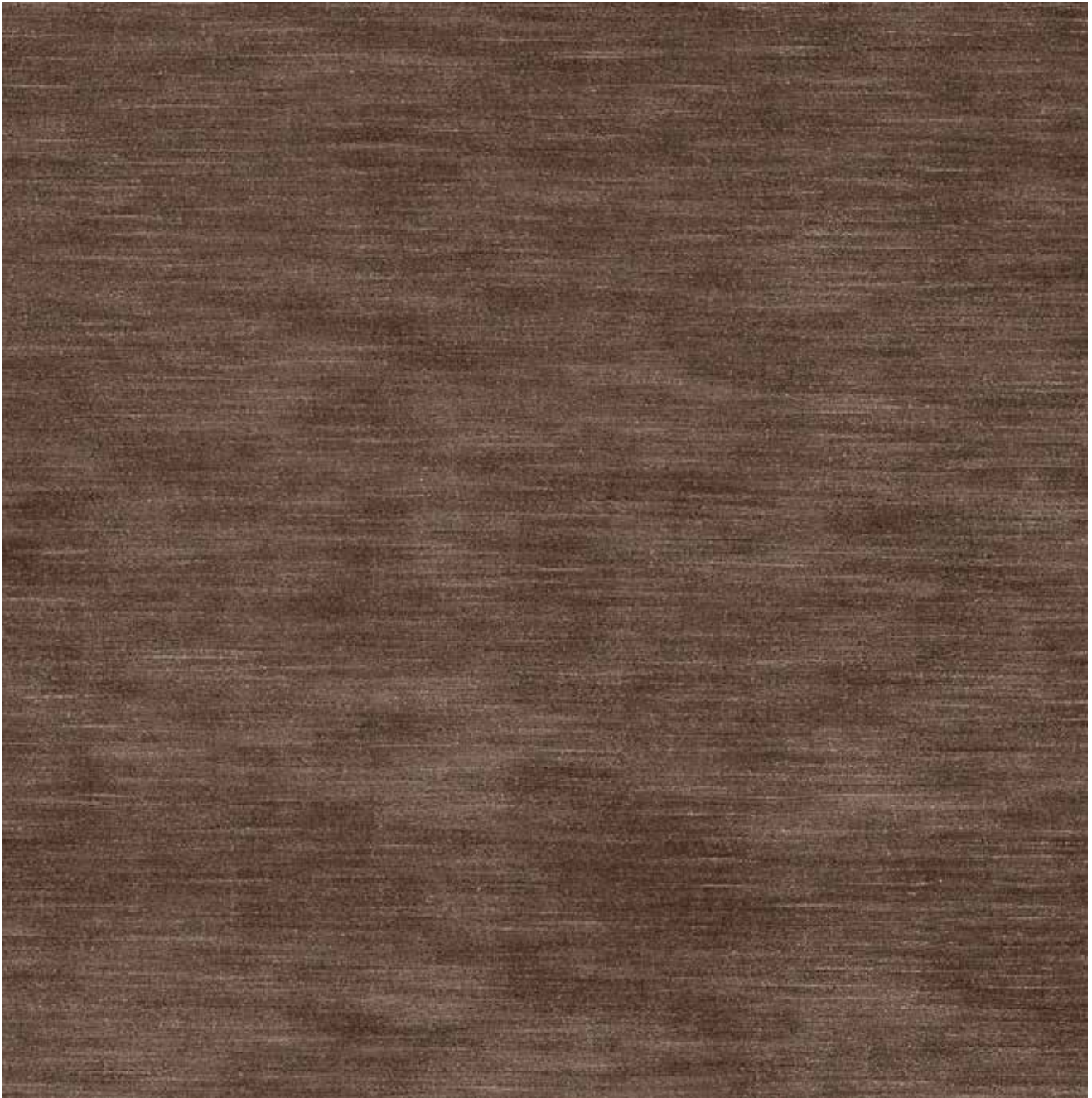
998



999

ORION

GIOPAGANI



A tactile ribbed effect gives this durable, velvet its appealing appearance and texture, while a subtle sheen creates an inviting depth of colour. A stain repellent finish makes Orion the ultimate practical textured velvet.

CAT. : E

Composition: 100% Polyestere

Martindale: 100000

Treatment: Stain repellent





JASMINE WHITE



PORCINI



ALUMINIUM



SKYLIGHT



OFF WHITE



PANNACOTTA



TAUPE



ALABASTER



LINEN



FOSSIL



ASH



FLAX



DOVE



SEA MIST



PUTTY



HAVANA



OLIVE



TOBACCO



SILVER GREY



SWEDISH GREY



STEEL



HEMP



SHITAKE



VELVET PINE CONE



GRAPHITE



EBONY



GRIS



HELEPANT



SLATE



CINDER



PEAT



NETTLE



FOREST



EVERGREEN



JADE



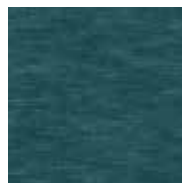
COAST



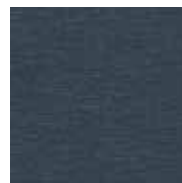
MINERAL



BALSAM



LAGOON



TEAL



PETROL



DRAGONFLY



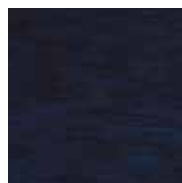
BLUEBERRY



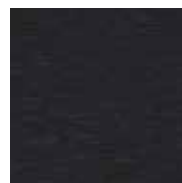
INDIGO



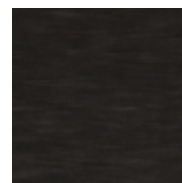
NUIT



INK



INDIAN INK



STORM CLOUD



ESPRESSO



BLOSSOM



VINTAGE ROSE



BRICK



PAPRIKA



BURNT ORANGE



FLAME



RUBY



PLUM

LEATHER

SHINING LEATHER

GIOPAGANI



Calf aniline leather lightly buffed on surface, finished with a natural pigmented protective coating. A polishing surface treatment lend the skin its unmistakable shiny look. A bold fashionable uncompromised statement.

CAT. : C
Leather type: Calf
Origin: Australia
Thickness: 0,9 mm
Dyeing: Pass-through aniline
Tanning: Chrome
Surface structure: Buffet grain
Treatments: Vegetal protective coating, Water-repellent



BIANCO



TALCO



TORRONE



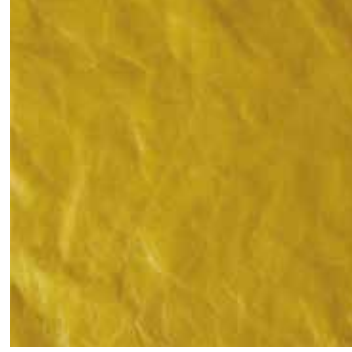
WHISKEY



CASTAGNA



MOKA



SOLE



FIAMMA



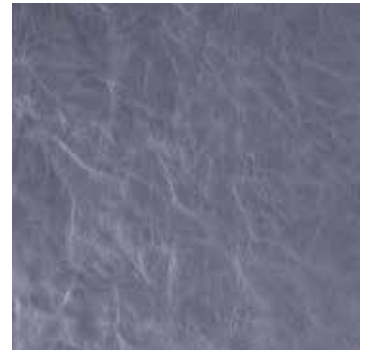
RUBINO



MATTONE



GLICINE



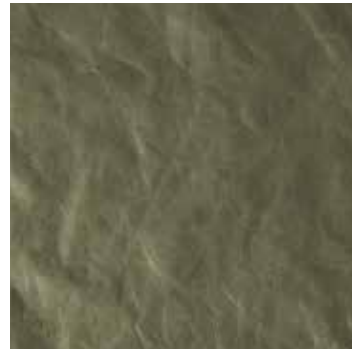
SKY



CELESTE



NAVY



SALVIA



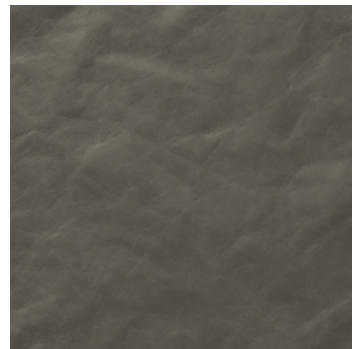
KIVI



TAUPE



ELEFANTE



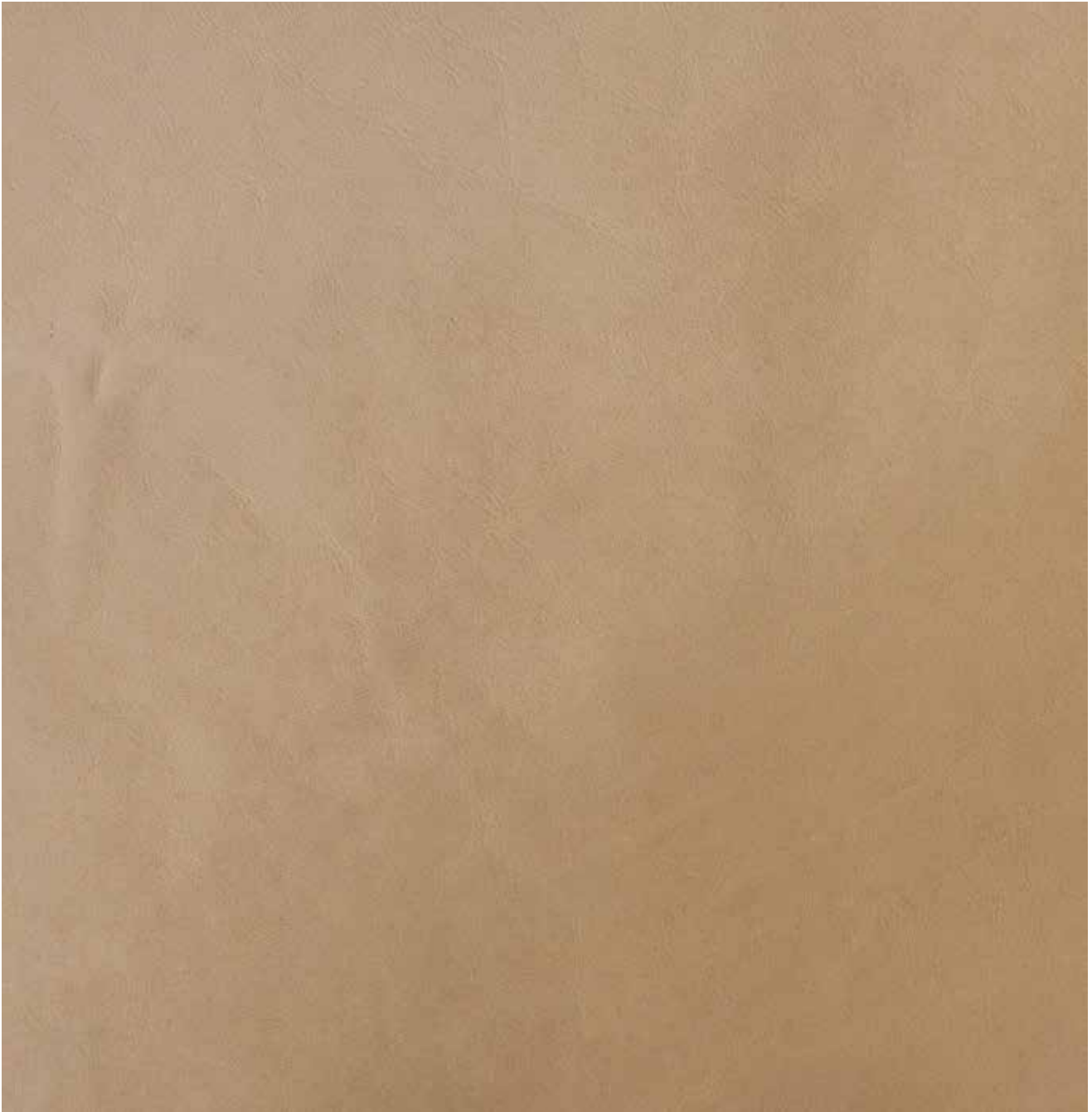
FUMO



NERO

TIMELESS LEATHER

GIOPAGANI



Cattle hides of European origin, chrome tanned, vacuum dried, finished with aniline, manually rubbed down to give a stone washed effect and a soft touch. Its lightly worn yet refined look is able to encode every product in different styles to interpret and lead the trends.

CAT. : B
Leather type: Cattle
Origin: Europe
Thickness: 1,4 / 1,6 mm
Dyeing: Pass-through aniline
Tanning: Chrome
Surface structure: Buffed grain



AVORIO



STONE



SMOG



FANGO



TESTA DI MORO



CAPREUVA



ZAFFERANO



BERNSTEIN



IBISCO



SALVIA



PRUGNA



NOTTE

VELVET LEATHER

GIOPAGANI



Bovine leather of European origin in nabuk finish, natural grain, aniline dyed, treated with high quality oils. Velvet look, suede touch and high comfort characterize this elegant leather that enriches everything it attires.

CAT. : A
Leather type: Cattle
Origin: Europe
Thickness: 1,2 / 1,4 mm
Dyeing: Aniline
Tanning: Chrome
Surface structure: Natural grain
Treatments Water-repellent



CHALK



CONCRETE



CANGAROO



DOESKIN



CAMEL



CAQUI



NUDE



VISON



LUCKY



DUCK BILL



CUOIO



CHOCOLATE FOREST



DREAM



EMERALD



SALVIA



GRAPHITE



PLOMO



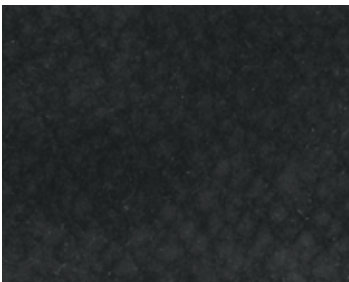
CENERE



EMATITE



TRUE BLU



ARDESIA

TOUCH LEATHER

GIOPAGANI



Cattle skins of European origin, chrome tanned, pure dyed aniline, greased and oiled with natural additives for an absolute tactile experience. Its softness and comfort, together with a polished and refined look, makes the Touch Leather the most precious hide in the collection.

CAT. : A
Leather type: Cattle
Origin: Europe
Thickness: 1,1 / 1,3mm
Dyeing: Aniline
Tanning: Chrome
Surface structure: Full grain



601



602



603



604



605



606



607



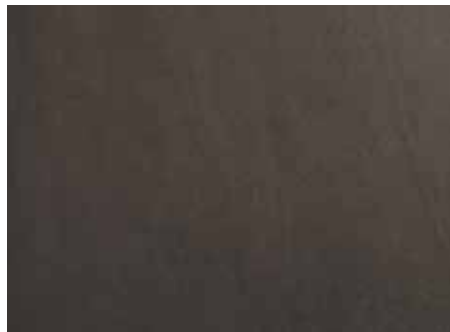
608



609



610



611



612



613

ROUGH LEATHER

GIOPAGANI



Calf aniline leather lightly buffed on surface, finished with a natural pigmented protective coating. The leather is finished with a vegetal matte protective coating.

CAT. : C
Leather type: Calf
Origin: Australia
Thickness: 0,9 mm
Dyeing: Pass-through aniline
Tanning: Chrome
Surface structure: Buffed grain
Treatments: Water-repellent



BIANCO



TALCO



TORRONE



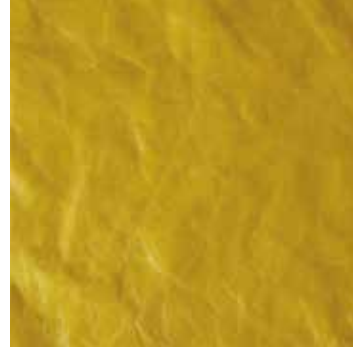
WHISKEY



CASTAGNA



MOKA



SOLE



FIAMMA



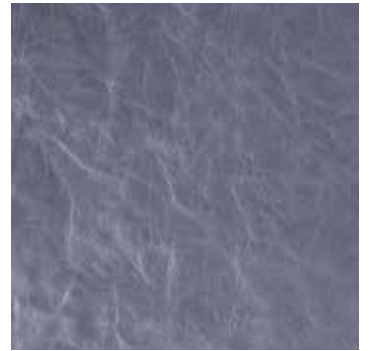
RUBINO



MATTONE



GLICINE



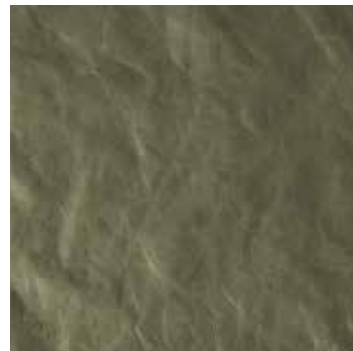
SKY



CELESTE



NAVY



SALVIA



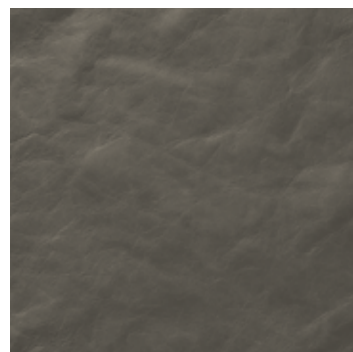
KIVI



TAUPE



ELEFANTE



FUMO



NERO

WOOD

WOOD

GIOPAGANI



Classical refined essences pulled together with unique materials and graphics. A wood selection thought to satisfy the most demanding tastes and turn on unexpected choices.



BLACK ASH
Matte black open-pore ash wood



ELM WOOD
Matte open-pore solid elm wood



ELM WOOD DARK
Matte dark open-pore solid elm wood



BLACK FIR
Matte black open-pore dried fir wood



GLOSSY CRAYON WOOD
Polyester coated wood with a 100 gloss lacquer finish



MATTE CRAYON WOOD
Coated wood with a soft touch matte finish

MARBLE

MARBLE

GIOPAGANI



A fine marble selection containing some of the most exclusive stones set to highlight every space with different personalities.



AMBROSIA



PATAGONIA



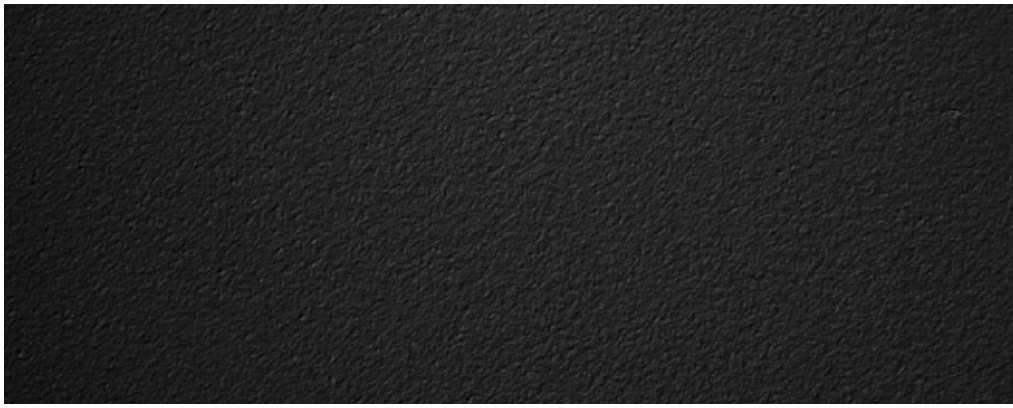
GREEN ONYX

METAL

GIOPAGANI



Raw feelings and polished moments codified in the metal selection. Unique custom works to enlighten every space with a powerful dose of personality. Each finishing is studied to interpret a different mood and suit every environment.



MATTE BLACK

Black textured metal finished with a matte powder coating



BRUSHED BRASS

Handmade brushed patinated brass finish



RAW SILVER

Galvanic plated metal polished steel finish with a manual surface oxidation



POLISHED STEEL

Metal polished steel finish

GLASS

GLASS

GIOPAGANI



Simple materials reinterpreted to bring to life memories and feelings long gone with a completely new attitude.



CLEAR MIRROR



SMOKED MIRROR



BRONZED MIRROR



FADING WHITE BOULE*
*AVAILABLE FOR LIGHTING



AMBER BOULE*
*AVAILABLE FOR LIGHTING

CRAYON COLOR CHART

CRAYON COLOR CHART

GIOPAGANI

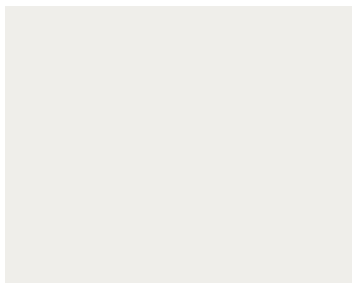


Color is a fundamental part in the creative process of the Maison to give soul and personality to its products.
A code to link all the capsules throughout their inspiration.

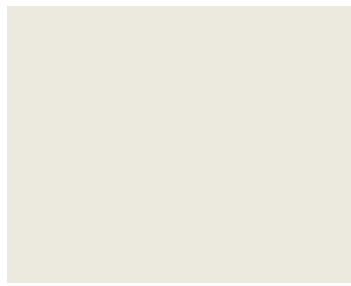
GIOPAGANI signature color palette is meant to enhance any mood with personality.

Color defines the space in its maximum expressiveness and convey different feelings according to whom lives in the environment. A color code to represent the broad universe of the brand.

To leave freedom in the customization of the ambient playing with a 24 shades range, available for the woods and glasses of the GIOPAGANI furniture collection.



ARTIC



TALCO



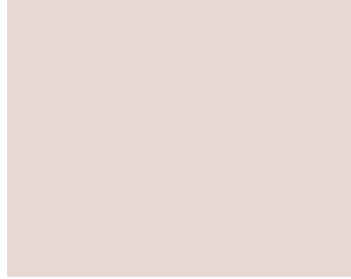
AFTER FIVE



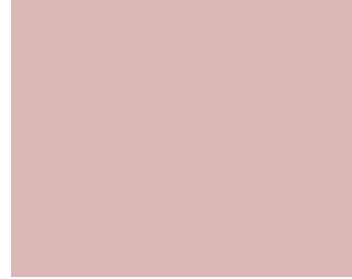
DESERT SHADOW



SILVER CITY



NUDE



HANAMI



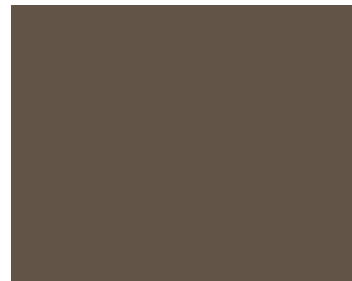
PLUM NOIR



MATCH POINT



SUPERNOVA



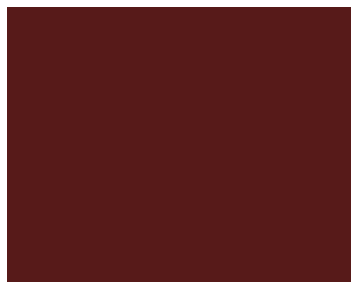
TAUPE



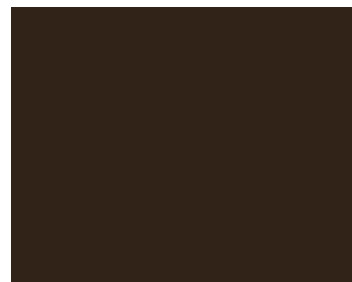
MUSTARD



RUSSET



BURNT UMBER



HOT CHOCOLATE



POLVERE



DEEP JADE



POSH PETROL



DARK MOON



SMOKY NIGHT



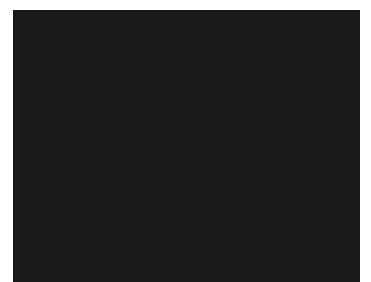
MENTA



SYCAMORE



SELVA



BLACK INK

CARE & MAINTENANCE

CARE & MAINTENANCE

GIOPAGANI

LEATHER

GIOPAGANI leather selection is the result of an aesthetic and technical research aimed at offering a wide choice of high quality materials, treated with the most advanced methods to enhance each declination of this material.

In order to preserve the excellence of the raw material, all treatments and finishes tend to preserve the natural features of the leather, including signs due to the life of animals, such as cuts, bites, calluses, wrinkles, shadows, grain differences, etc. These features are the tangible testimony to the naturalness of the product and must therefore be considered as values and fundamental elements of the leather.

Each leather has its own special features deliberately kept by the tanner: shadows, scratches, shades of hue and stretches due to natural wrinkles. The coloring process for our Touch, Velvet and Timeless leathers is an aniline dyeing, a procedure which ensures the color fixing over time. This kind of leather has a thin shallow coating, and therefore is the most sensitive to wear effects, such as color transfer, particularly for dark shades.

Some of our leathers (Shining Leather and Velvet Leather) have a protective surface treatment that facilitates stain removal. This treatment may tend to lose its full effectiveness over time, due to the wear and the natural slow deterioration of the material. The other leathers in the collection, on the other hand, are totally natural and therefore any kind of stain, especially those due to animal or vegetable grease, will inevitably penetrate into the pores and it will not be possible to remove them.

With leather, as with fabrics, every batch of production could show small color differences from the supplied samples and elements produced in different moments.

Sizes relating to the upholstered parts are subject to tolerances of use in time caused by the normal settling of the padding.

LEATHER CARE AND MAINTENANCE

For daily cleaning of leather liners, pass a soft cloth to remove dust. In case of stains, intervene immediately and treat the surface with a well-clean white cloth dampened with lukewarm water. Do not rub too strongly on the surface.

Avoid using cleansers or alcohol that could permanently alter the appearance of the leather.

For greasy stains, gently remove the substance from the surface with absorbent paper, avoiding the pressure so that the dirt does not penetrate into the pores of the leather. Then, with a clean cloth soaked in a highly diluted neutral soap solution, gently rub the stain.

To remove coffee, tea, milk or soft stains, it is necessary to quickly buffer the liquid from the surface with a non-abrasive cloth or absorbent paper. Then, with a damp cloth, gently rub the stain and dry the area immediately with a dry cloth. Let the leather dry out in the open air, avoiding direct sunlight.

Avoid prolonged exposure to direct sunlight or light and heat sources. Do not expose to atmospheric agents and maintain a constant humidity level in the product display area. Do not use hair dryers. Do not iron or vaporize.

FABRIC & VELVET

GIOPAGANI fabric and velvet collection is the result of a deep and eclectic research for patterns, natural and synthetic threads, often exclusively custom made for our brand, capable of harmoniously dressing every product for any environment. The extensive proposal of the collection of fabrics and leathers is aimed at meeting the needs of an international market. The fabrics are subjected to a series of quality tests to ensure quality and durability over time such as: abrasion resistance, pilling formation, light fastness, tensile strength,

tear resistance and rubbing.

The jacquard fabric Zig Zag Birds is produced on a special frame with a mechanism able of creating complex and colored patterns. This device allows individual selection and lifting of all warp yarns, enabling the creation of a wide range of complex patterns and designs.

Sizes relating to the upholstered parts are subject to tolerances of use in time caused by the normal settling of the padding.

FABRIC CARE AND MAINTENANCE

For daily cleaning of fabric linings, pass a soft cloth to remove dust. Avoid using beaters and vacuum cleaners that can damage padding and lining. In case of stains, intervene immediately and treat the surface with a well-clean white cloth dampened with lukewarm water (moving from the center to the edges). If necessary, moisten the cloth with a specific detergent. Do not apply detergent directly to the fabric. Let the fabric dry outdoors. Do not iron or vaporize.

For the maintenance of velvet furniture, clean daily with a dry soft cloth or a soft brush to remove dust.

In case of stains, especially if of a greasy nature, absorb immediately with talc. Treat residual stains using a solution of Marseille soap, rubbing with a soft brush. It is also possible to use a special degreaser, testing it on a hidden part to verify that the fabric resists the treatment. Alternatively, use an appropriate dry foam.

Avoid prolonged exposure to direct sunlight or light and heat sources. Do not expose to atmospheric agents.

FUR

Mongolian fur, a distinctive and bold material, coming from a long-haired lamb variety typical of the Asian region of Mongolia, is characterized by a very soft and curly hair that gives warmth and

preciousness to the product.

Each Mongolia cloth is composed of different parts of fur stitched together, thus making each cloth unique. The length of the hair can vary from 10 to 15 centimeters (4-6 inches), a peculiar feature of Mongolia's natural fur.

Sizes relating to the upholstered parts are subject to tolerances of use in time caused by the normal settling of the padding.

FUR MAINTENANCE

For cleaning of Mongolian fur, contact a specialized center.

Longer or repeated contact with the product in the daily use may reduce the natural volume and curliness of the fur. Contact a specialized center to revive the fur.

Avoid prolonged exposure to direct sunlight or light and heat sources. Do not expose to atmospheric agents. Keep in a cool and dry place. Do not use the hairdryer. Do not cover the fur with plastic. Avoid the use of chemicals. Friction may cause a substantial hair shedding.

METAL

Galvanic finishes (brass and steel) benefit from strong resistance, excellent aesthetic impact and anti-adhesion to dirt. In addition to the aesthetic quality, GIOPAGANI guarantees its buyer a durable and long-lasting product, which is why a very strict and controlled production cycle is adopted in all stages of manufacturing. Matte Black metal is a powder coating finish with a rough texturization.

To complete the selection of finishes, research materials have been inserted to represent the avant-garde stylistic soul of the brand. Raw Silver has an handmade surface acidification that give the metal a natural aging appearance.

SuperSignum s.r.l.

GIOPAGANI HEADQUARTER
+39 0522 90 21 45
via Emilia, 14
42043 Gattatico, Reggio Emilia
Italy

e. info@giopagani.com
w. www.giopagani.com

All **GIO**PAGANI products are protected by registered trademark