

Colour World Upholstery & Surfaces Guide



Colour World Upholstery & Surfaces Guide

2022

Index

Colour World	8
Olive	10
Deep Red	12
Amber	14
Blue Notes	16
Cool Grey	18
Light Sand	20
Warm Grey	22
Mocca	24
Charcoal	26
Fredericia Leather	28
Upholstery Leather	30
Saddle Leather	36
Sheepskin	36
Standard Fabrics	40
Wool	40
Linen and Soft Unions	52
Bouclé	62
Velvet	68
Additional Materials	76
Wood	76
Stone	84
Metal	88
Laminate & Linoleum	94
Webbing & Wicker	96
Canvas	98
Pato Colours	102
Contact	109

Mix-and-match

This guide is Fredericia's material library and mix-and-match tool for architects and designers. It not only showcases our collection of standard fabrics and leathers, it also offers an intuitive coordination between textile, leather, colour and surface options.

Starting with a colour scale, enjoy a variety of leathers, fabrics, textures and surface sensations to create any type of interior from discrete to dynamic. With the freedom to choose subtle, muted tones or a mix of tones across the colour spectrum. In line with Fredericia's design philosophy, the guide is created with a strong focus on tactility and natural beauty. A universe of options that are as pleasing to the eye as to the touch, able to enhance the atmosphere of any space.

Fredericia colour, surface and upholstery guide feature our standard selection, not a fixed set of options. We continue to offer a broad range of graded-in fabrics, and deliver bespoke upholstery for projects and special application demands.



	Connect	Bardal	Capture	Grand Linen	Linara	Natural Linen	Remix	Re-wool	Ruskin	Anta	Carlotto	Clay	Fiord	Foss	Hallingdal	Harald	Loop	Savoy	Steelcut Trio	Sunniva	Cotil	Divina Melange	Ele	Vidar	Grand Mohair	Safire	Sisu	Gentle	
Fabric group	0	1	1	1	1	1	1	1	1	2	2	2	2	2	2	2	2	2	2	2	3	3	3	3	4	4	4	5	
Page	45	44	44	57	57	58	48	48	58	56	66	56	46	47	47	72	66	72	49	59	45	46	67	50	73	67	49	73	
A-Chair		•	•	•	•			•	•	•	•	•	•		•		•		•			•	•	•	•	•	•	•	
Calmo	•	•	•	•	•	•	•	•	•	•	•	•	•	•	•	•	•	•	•	•	•	•		•		•	•	•	
Corona Chair	•	•	•	•	•	•	•	•	•	•	•	•	•	•	•	•	•	•	•	•		•	•	•	•	•	•	•	
Delphi Sofa		•	•		•			•	•	•	•	•	•	•	•		•		•			•	•	•		•	•	•	
Ditzel Lounge		•	•		•		AS	•	•	•	•	•	AS	AS	•		•		AS	AS		•	AS	•		AS	•	•	
EJ50 Sofa	•	•	•		•		•	•	•	•	•	•	•	•	•		•		•	•	•	•	•	•	•	•	•	•	
EJ220 Sofa	•	•	•	•	•	•	•	•	•	•	•	•	•	•	•	•	•	•	•	•	•	•	•	•	•	•	•	•	•
EJ280 Sofa	•	•	•	•	•		•	•	•	•	•	•	•	•	•	•	•	•	•	•	•	•	•	•	•	•	•	•	
EJ288 Sofa	•	•	•	•	•		•	•	•	•	•	•	•	•	•	•	•	•	•	•	•	•	•	•	•	•	•	•	
EJ295 Chaise Sofa	•	•	•		•		•		•	•		•	•	•	•	•	•		•	•		•		•		•	•	•	
EJ315 Sofa	•	•	•		•	•	•	•	•	•		•	•	•	•	•	•	•	•	•		•		•			•		
Eyes	•	•	•		•		•	•	•	•	•	•	•	•	•	•	•	•	•	•	•	•	•		•	•	•	•	
Flamingo Chair		•	•		•			•	•	•	•	•	•		•	•			•	•		•		•	•	•	•	•	
Haiku		•	•		•		•	•	•	•	•	•	•	•	•	•	•		•	•		•		•	•	•	•	•	
Konami Sofa				•						•	•				•		•						•	•		•	•	•	
Mogensen 22 collection		•		•					•	•		•			•	•				•	•	•		•			•		
Mogensen 23 collection		•		•	•		•	•	•	•		•	•	•	•	•	•	•	•	•	•	•		•			•		
Mogensen Bench & 3238 Chair	•	•	•	•		•	•	•	•	•	•	•	•	•	•	•	•	•	•	•	•	•	•	•	•	•	•	•	
Mono Pouf	•	•	•	•	•		•	•	•	•		•	•	•	•	•	•	•	•	•	•		•	•	•		•	•	
No. 1		•	•		•		•	•	•	•		•	•	•	•	•	•	•	•	•	•		•		•	•	•	•	
Pato	•	•	•		•		•	•	•	•	•	•	•	•	•	•	•		•	•		•		•		•	•	•	
Post Chair	•	•	•	•	•	•	•	•	•	•		•	•	•	•	•	•	•	•	•	•	•	•	•			•	•	
Savannah		•	•	•	•			•		•	•	•			•				•			•		•		•	•	•	
Spine	•	•	•	•	•		•	•	•	•	•	•	•	•	•	•	•	•	•	•	•	•	•	•	•	•	•	•	
Spine Lounge		•	•	•	•		•	•	•	•	•	•	•	•	•	•	•	•	•	•	•	•	•	•	•		•	•	
Spoke Back Sofa		•	•	•	•	•	•	•	•	•		•	•	•	•				•	•		•		•			•		
Swoon	•	•	•		•		•	•	•	•	•	•	•	•	•	•	•	•	•	•	•		•	•	•	•	•	•	
Soborg	•	•	•	•	•	•	•	•	•	•	•	•	•	•	•	•	•	•	•	•	•	•	•	•	•	•	•	•	
Trinidad	•	•	•	•	•	•	•	•	•	•	•	•	•	•	•	•	•	•	•	•	•		•		•	•	•	•	
Wegner 1788 Chair		•	•		•	•	•	•	•	•	•	•	•	•	•				•	•	•	•	•	•			•		
Wegner Ox & queen Chair		•	•	•	•			•	•	•	LP	•	•		•		LP		•	•		•	LP	•	LP	LP	LP	•	
Yksi	•	•	•	•	•		•	•	•	•	•	•	•	•	•	•	•	•	•	•		•		•	•	•	•	•	

AS 2 additional seams on front and back. LP With leather piping

Olive



Fabrics



Fiord 961 p. 48



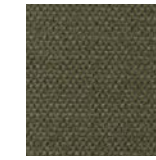
Bardal 860 p. 44



Clay 014 p. 54



Nubuck 512 Olive p. 40



Safire 0005 p. 65



Grand Mohair 9103 p. 71



Trace 8146 Olive p. 39



Carlotta 900 p. 64



Vidar 972 p. 49

Other Standard Fabrics



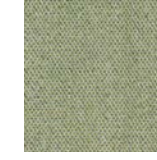
Connect 68233



Linara 100



Steelcut Trio 946



Capture 5101



Remix 954



Loop 36



Fiord 951



Savoy 68154

Pato Colours

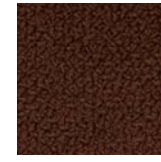


Quartz Grey

Deep Red



Fabrics



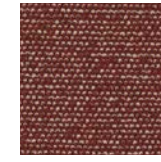
Carlotto 500 p. 64



Gentle 373 p. 71



Omni 293
Burrt sienna p. 38



Safire 0013 p. 65



Fiord 581 p. 46



Sunniva 662 p. 57



Max 93 Indian red p. 40



Remix 373 p. 48

Other Standard Fabrics



Remix 662



Vidar 582



Capture 5402



Steelcut Trio 686



Divina Melange 597



Linara 45



Grand Mohair 6101



Vidar 693



Bardal 660



Savoy 63082



Sisu 655

Pato Colours

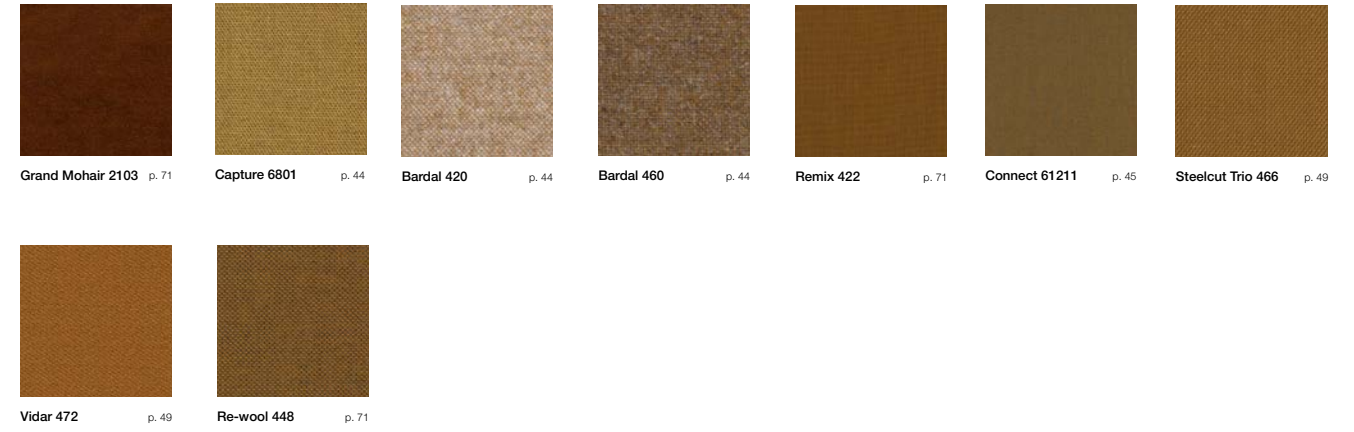


Dark red

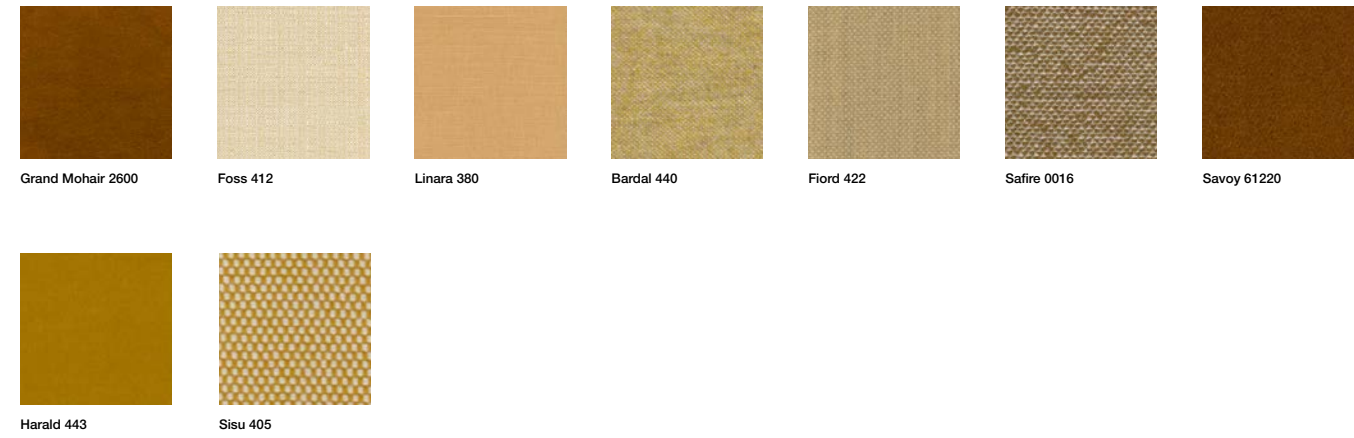
Amber



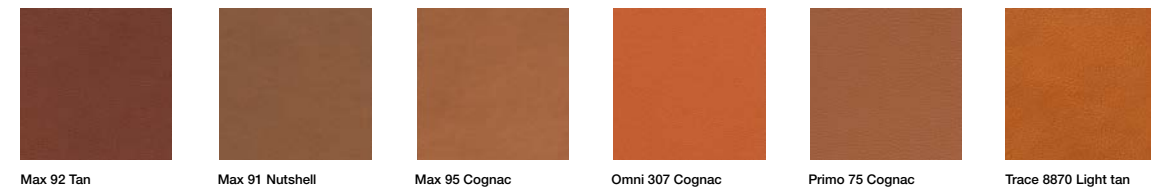
Fabrics



Other Standard Fabrics



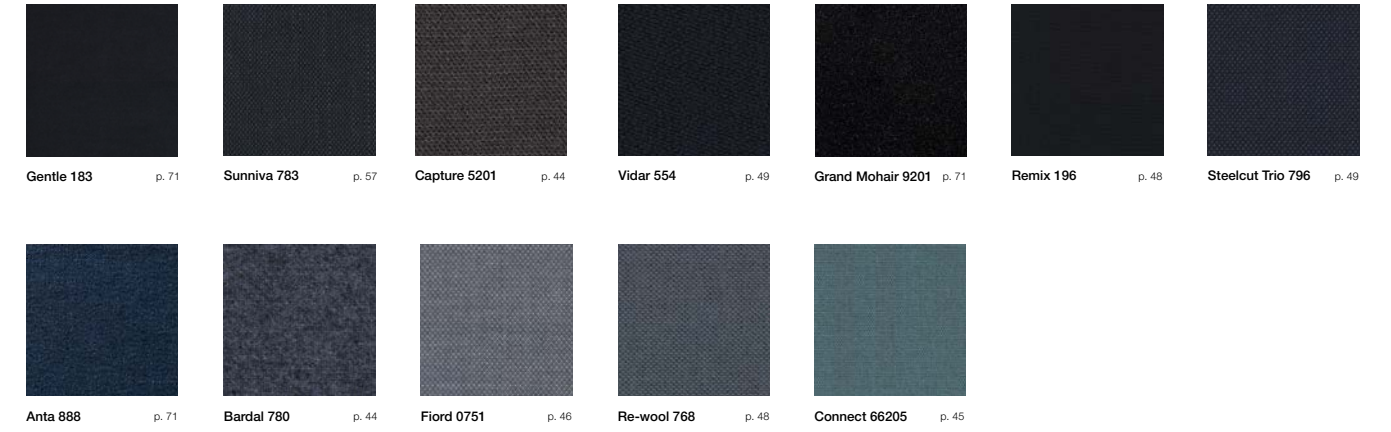
Fredericia Leather



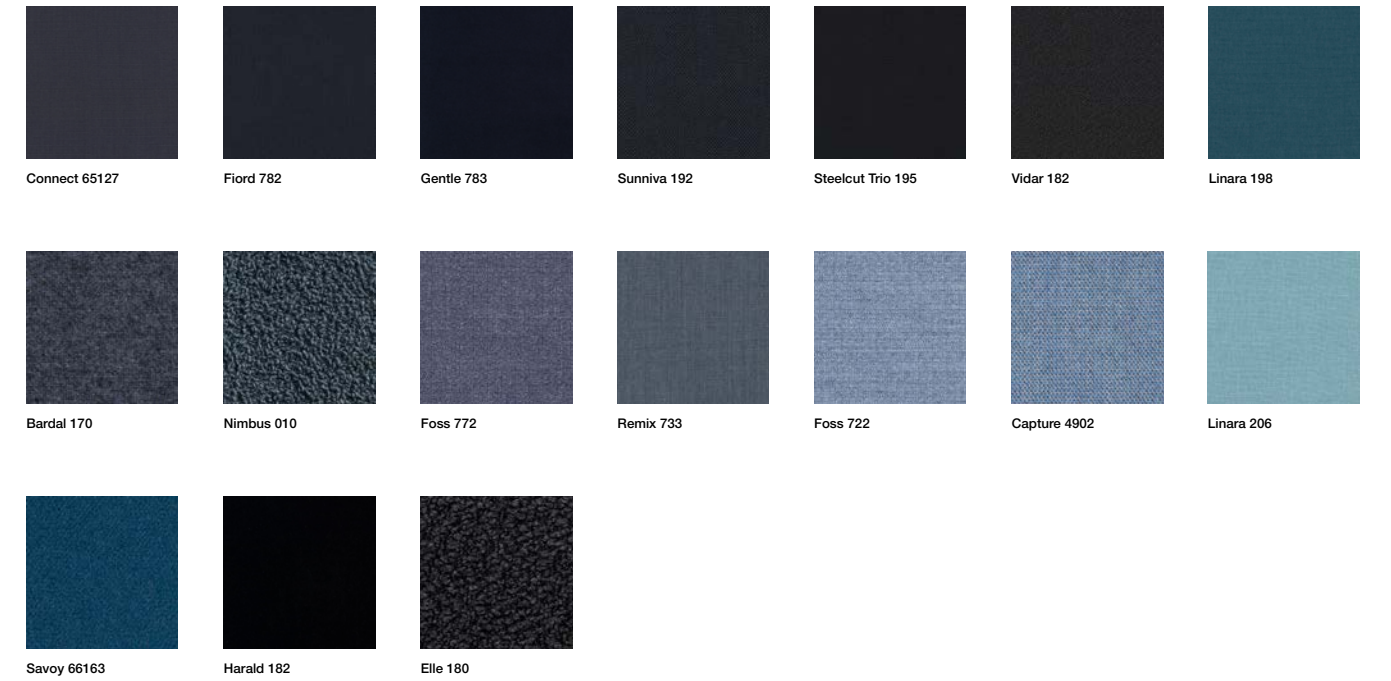
Blue Notes



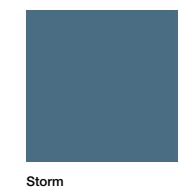
Fabrics



Other Standard Fabrics



Pato Colours



Cool Grey



Fabrics



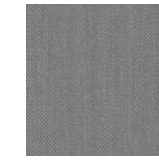
Remix 123 p. 48



Fiord 151 p. 48



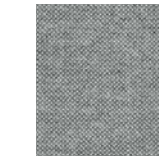
Re-wool 108 p. 48



Steelcut Trio 113 p. 48



Bardal 110 p. 48



Hallingdal 116 p. 48



Ruskin 16 p. 48

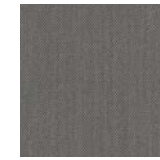


Divina Melange 120 p. 48



Clay 12 p. 48

Other Standard Fabrics



Steelcut Trio 133



Connect 60147



Foss 142



Hallingdal 130



Sunniva 242



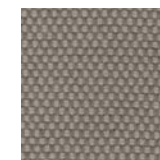
Fiord 751



Ruskin 13



Gentle 133



Sisu 125

Pato Colours



Stone

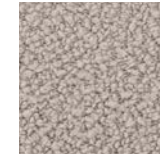


Quartz Grey

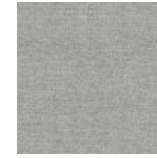
Light Sand



Fabrics



Elle 230 p. 65



Hallingdal 110 p. 47



Ruskin 10 p. 56



Sunniva 717 p. 57



Steelcut Trio 213 p. 49



Carlotta 200 p. 64



Hallingdal 103 p. 47



Nubuck 501 Light sand p. 40



Anta 214 p. 54



Divina Melange 227 p. 46

Other Standard Fabrics



Sunniva 811



Natural Linen 0003



Fiord 322



Loop 32



Grand Linen 0024



Safire 0008



Grand Mohair 1108



Anta 402



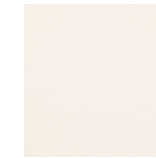
Connect 61207



Bardal 220



Loop 33



Linara 434



Linara 441

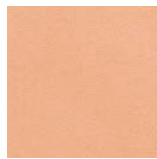


Sisu 105

Fredericia Leather



Omni 112 Warm grey



Vegeta 90 Natural

Pato Colours



Sand

Warm Grey



Fabrics



Capture 4201 p. 44 Ruskin 34 p. 56 Grand Mohair 8008 p. 71 Clay 013 p. 54 Sunniva 173 p. 57 Anta 700 p. 54 Re-wool 158 p. 48



Nubuck 502 p. 40
Warm grey

Other Standard Fabrics



Steelcut Trio 266 Remix 163 Capture 5103 Harald 143 Savoy 61221 Elle 280 Elle 290

Fredericia Leather



Omni 112 Warm grey Omni 320 Dark clay Primo 74 Umbra grey

Pato Colours



Dark Grey

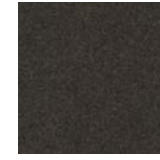
Mocca



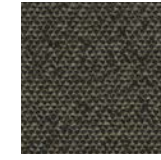
Fabrics



Steelcut Tio 383 p. 49



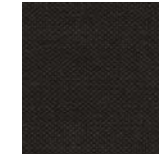
Divina Melange 277 p. 46



Safire 0001 p. 66



Clay 008 p. 54



Fiord 391 p. 46



Sunniva 383 p. 57



Organic 906 Mocca p. 41

Other Standard Fabrics



Hallingdal 368



Sisu 375

Fredericia Leather



Primo 86-1 Dark brown



Max 96 Dark brown



Omni 377 Dark brown

Charcoal



Fabrics



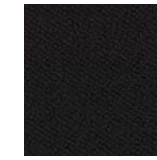
Hallingdal 180 p. 47



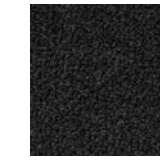
Fiord 191 p. 46



Sunniva 183 p. 57



Vidar 1880 p. 49



Carlotto 110 p. 64



Divina Melange 180 p. 46



Re-wool 198 p. 48



Omni 301 Black p. 38

Other Standard Fabrics



Remix 173



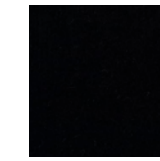
Connect 60999



Foss 192



Savoy 60999



Harald 192



Sisu 195

Fredericia Leather



Max 98 Black



Primo 88 Black



Vice 11 Black



Trace 8175 Black



Omni 301 Black



Nubuck 506 Anthracite

Pato Colours



Black

Leather

Vice, Omni, Primo, Trace, Max, Nubuck, Vegeta, Organic, Saddle Leather, Sheepskin

Our Fredericia Leather Collection is a curated selection of leathers chosen primarily for their exceptional high quality. From surface finish to colour range, the leathers are fine-tuned to complement the Fredericia product range, both visually and in terms of material tactility.

All leathers are free of allergenic substances. Each of our partner tanneries is monitored and supervised to ensure that they comply with ethical and environmental regulations, as well as high standards of quality. Across the Fredericia Leather collection the raw hides are guaranteed to be from European livestock, primarily Germany, Sweden and Denmark.

Mogensen 2292 Coupé Sofa
by Borge Mogensen
Leather: Vegeta 90 Natural
Wood: Walnut oil



Application Matrix Leather

	Vice	Omni	Primo	Trace	Max	Vegeta	Organic	Nubuck	Sheepskin
Leather group	0	1	2	2	3	4	4	4	
A-Chair		•		•	•	•	•		
Calmo		•	•		•	•	•	•	
Corona Chair		•	•	•	•	•	•	•	
Ditzel Lounge		AS	AS	AS	AS	AS	AS	AS	•
Delphi Sofa		•	•		•	•	•	•	
EJ50 Sofa	•	•	•	•	•	•	•	•	
EJ220 Sofa		•	•	•	•	•	•	•	
EJ280 Sofa		•	•		•	•	•	•	
EJ288 Sofa		•	•		•	•	•	•	
EJ315 Sofa		•	•		•	•	•	•	
Eyes & Eyes Lounge	•	•	•	•	•	•	•	•	
Flamingo Chair	•	•	•	•	•	•	•	•	
Haiko (Rear Side)	•	•	•		•	•	•	•	
Mogensen 22 & 23 Collection		•	•	•	•	•	•	•	
Mogensen Bench & 3236 CHAIR	•	•	•	•	•	•	•	•	
Mono Pouf	•	•	•	•	•	•	•	•	
Pato	•	•	•	•	•	•	•	•	
Post Chair	•	•	•	•	•	•	•	•	
Sequoia Pouf									•
Spine & Spine Lounge	•	•	•	•	•	•	•	•	
Spoke Back Sofa		•	•	•	•	•	•	•	
Swoon		•	•	•	•	•	•	•	
Søborg	•	•	•	•	•	•	•	•	
Trinidad	•	•	•	•	•	•	•	•	
Vodder Chairse		•			•	•			
Wegner 1788 Chair		•	•	•	•	•	•	•	
Wegner Ox & Queen Chair			•		•	•	•	•	•
Yksi	•	•	•		•	•	•	•	

AS 2 additional seams
on front and back

Vice

Leather Group 0



About

This pigmented furniture leather is made from European cow hides. The leather surface is corrected with an even grain pattern embossment. Vice is an extremely durable leather and easy to clean, making it suitable for heavy use environments. Reduced breathability. European raw hides, chrome tanned in Italy.

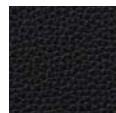
Type Pigmented

Thickness 1,2-1,4 mm

Light fastness 5

Environment Blaue Engel Eco-label

Total no of colours 1



11
Black

Omni

Leather Group 1



About

Omni is an elegant semi-aniline leather made from strong, European cattle. The full grain surface has a harmonious and regular structure and provides a pleasant and comfortable touch. The leather has a delicate pigmentation, which makes it very user friendly with good protection against dirt and light, while being durable in use. European raw hides from Scandinavia and South Germany, chrome tanned in Italy.

Type Semi-aniline

Thickness 1,2-1,4 mm

Light fastness 5

Environment Blaue Engel Eco-label
Colours 301 Black, 307 Cognac & 377 Dark brown are available with SPOOR traceability no. verifying the origin of the individual raw hide priced in leather group 2.

Flame resistance Available with Crib 5 treatment priced in leather group 2

Total no of colours 6



301
Black



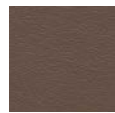
293
Burnt sienna



307
Cognac



377
Dark Brown



320
Dark clay



112
Warm grey

Primo

Leather Group 2



About

A classic full-grain semi-aniline leather with a characterful surface structure, made from the best Scandinavian bull hides. Thanks to a precise protective layer, the leather retains a comfortable touch with good breathability, while being durable in use. European raw hides from Scandinavia and South Germany, chrome tanned in Italy.

Type Semi-aniline

Thickness 1,5 - 1,7 mm

Light fastness 5

Environment Blaue Engel Eco-label

Total no of colours 4



88
Black



75
Cognac



86-1
Dark brown



74
Umbra grey

Trace

Leather Group 2



About

Trace is a vegetable tanned semi-aniline leather made from Scandinavian raw hides. The natural and honest character of the hide is cherished in this leather, allowing for visible marks of animal life as a token of respect for the material's natural origin - such as ingrown scars, fat streaks and other surface irregularities. The leather is slim and elegant, with a full-grain structure. Fully vegetable tanned in Sweden.

Notice: This leather comes from a sorting of raw hides allowing for uneven grain, colour differences and visible ingrown scars. This must be seen as a part of the natural character of this leather.

Type Semi-aniline

Thickness 1,1-1,3 mm

Light fastness 4-5

Total no of colours 4



8175
Black



8870
Light tan



8680
Heritage brown



8146
Olive

Notice:



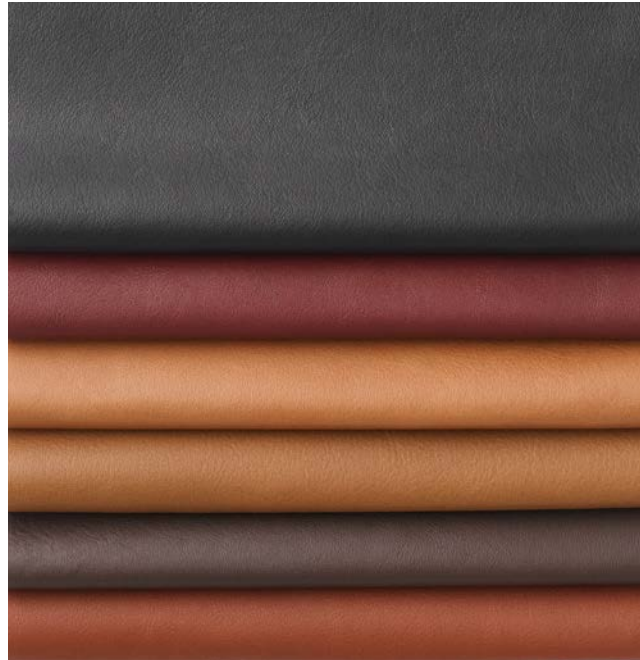
Ingrown scar



Uneven grain

Max

Leather Group 3



About

This luxurious full-grain aniline leather has a pleasant touch and a natural open-pored texture. The leather is highly breathable and comfortable with a smooth surface and tight structure giving the leather a sophisticated elegance. Max is made from the absolute top selection bull hides with discrete visible marks of animal life and an honest natural surface. European raw hides, chrome then vegetable tanned in Italy.

Type Aniline

Thickness 1,3-1,4 mm

Light fastness 4

Environment Blaue Engel Eco-label
Colours 98 Black & 95 Cognac are available with SPOOR traceability no. verifying the origin of the individual raw hide priced in leather group 2.

Total no of colours 6



98
Black



93
Indian red



95
Cognac



91
Nutshell



96
Dark brown



92
Tan

Nubuck

Leather Group 4



About

Nubuck is a nubuck leather with a warm and charming look made from the finest European bull hides. A full-grain aniline hide has been lightly sanded to obtain an exclusive matte effect. The velvety soft touch of this nubuck leather is unparalleled by any other article. European raw hides, chrome tanned with Scotchguard protection in Italy.

Thickness 1,2 - 1,4 mm

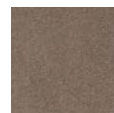
Light fastness >4

Environment Blaue Engel Eco-label

Total no of colours 4



501
Light Sand



502
Warm Grey



506
Anthracite



512
Olive

Vegeta

Leather Group 4



About

A serene, uncoloured leather with a refined touch. This leather is produced from the absolute top selection of hides. Discrete marks of animal life demonstrate the material's authentic origin. Vegeta has a natural open-pored texture, making the leather highly breathable. With no protective layer, Vegeta is sensible in use. The leather acquires a unique patina and darkens over time. Fully vegetable tanned in Italy.

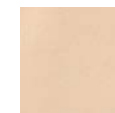
Type Aniline

Thickness 1,2 - 1,4 mm

Light fastness n/a

Environment Blaue Engel Eco-label

Total no of colours 1



90
Natural

Organic

Leather Group 4



About

A purely vegetable tanned semi-aniline leather where the raw hides are traceable to state-controlled organic cattle from organic farms in Denmark and Sweden. The leather has a water based protective surface and the natural character and variation of a free roaming animal life is to be expected in the surface. Fully vegetable tanned in Sweden.

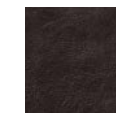
Type Semi-aniline

Thickness 1,1 - 1,3 mm

Light fastness 4-5

Environment Organic Content Certification

Total no of colours 1



906
Mocca

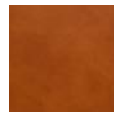
Saddle leather



About	Saddle leather of the highest calibre made from first selection Swedish bull hides. Sensitive to light. Grown, dyed, finished and tailored in Sweden. Fully vegetable tanned.
Type	Aniline
Light fastness	>3
Total no of colours	3



Natural



Cognac

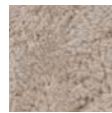


Black

Sheepskin



About	Sheepskin is cozy, warm and contemporary in look. The wool has a curly texture and is high in density, which makes it both durable and soft. The sheepskins used for upholstery are Australian Crossbreed, lamp/sheep. Two sheepskins are never identical, the structure, density and original colour will vary, all qualities that result in an unique product. The wool does not attract dust or dirt to itself which means it is easy to keep clean. See Fredericia Care and Maintenance Guide for further information.
Type	Skandilock Moonlight
Light fastness	3-4
Flame resistance	EN1021-1, EN1021-21, CAL. TB117 (US), FAR §23.853 (AUS)



Moonlight

Ditzel Lounge by Nanna Ditzel
 Upholstery: Sheepskin
 Wood: Walnut oil
 Sequoia Pouf by Space Copenhagen
 Upholstery: Sheepskin
 Tableau by Space Copenhagen
 Stone: Dark Atlantico limestone



Wegner Ox Chair by Hans J. Wegner
Upholstery: Omni 301 Black
Base: Brushed chrome
Pato Office Chair by Welling/Ludvik
Upholstery: Max 93 Indian red
Base: Polished aluminium
Pal Table by Keiji Takeuchi
Table top: Walnut oil
Base: Brushed stainless steel
Meadow Lamp by Space Copenhagen



Wool

Bardal, Capture, Connect, Cotil 863, Divina Melange, Fiord, Foss, Hallingdal, Remix, Re-wool, Sisu, Steelcut Trio, Vidar

The natural properties of wool intrinsic to this group boast an amazing array of features. Wool is naturally flame retardant and soil resistant. It is very comfortable because it absorbs humidity without causing it to feel moist. It also tempers the body. These selected wool fabrics come in a variety of types, some are more slender and some have more texture.



Delphi Elements by Hannes Wettstein
Upholstery: Steelcut Trio 213
Base: Brushed aluminium
Piloti Table by Hugo Passos
Wood: Oak light oil
Lynderup Chair by Børge Mogensen
Wood: Walnut Lacquered
Base: Chrome
Upholstery: Remix 422

Application Matrix Wool

	Connect	Bardal	Capture	Remix	Re-wool	Flord	Foss	Hallingdal	Steelcut Trio	Cotil	Divina Melange	Vidar	Sisu
Fabric group	0	1	1	1	1	2	2	2	2	3	3	3	4
A-Chair		•	•		•	•		•	•		•	•	•
Calmo	•	•	•	•	•	•	•	•	•	•	•	•	•
Corona Chair	•	•	•	•	•	•	•	•	•		•	•	•
Delphi Sofa		•	•		•	•	•	•	•		•	•	•
Ditzel Lounge		•	•	AS	•	AS	AS	•	AS		•	•	•
EJ50 Sofa	•	•	•	•	•	•	•	•	•	•	•	•	•
EJ220 Sofa	•	•	•	•	•	•	•	•	•	•	•	•	•
EJ280 Sofa	•	•	•	•	•	•	•	•	•	•	•	•	•
EJ288 Sofa	•	•	•	•	•	•	•	•	•	•	•	•	•
EJ295 Chaise	•	•	•	•		•	•	•	•		•	•	•
EJ315 Sofa	•	•	•	•	•	•	•	•	•		•	•	•
Eyes	•	•	•	•	•	•	•	•	•		•	•	•
Flamingo Chair		•	•		•	•		•	•		•	•	•
Haiku		•	•	•	•	•	•	•	•		•	•	•
Konami Sofa								•				•	•
Mogensen 22 collection		•				•		•		•	•	•	•
Mogensen 23 collection		•		•	•	•	•	•	•	•	•	•	•
Mogensen Bench & Chair	•	•	•	•	•	•	•	•	•	•	•	•	•
Mono Pouf	•	•	•	•	•	•	•	•	•		•	•	•
No. 1		•	•	•	•	•	•	•	•		•	•	•
Pato	•	•	•	•	•	•	•	•	•		•	•	•
Post Chair	•	•	•	•	•	•	•	•	•	•	•	•	•
Savannah		•	•		•			•	•		•	•	•
Spine	•	•	•	•	•	•	•	•	•	•	•	•	•
Spine Lounge		•	•	•	•	•	•	•	•	•	•	•	•
Spoke Back collection		•	•	•	•	•	•	•	•	•	•	•	•
Swoon	•	•	•	•	•	•	•	•	•		•	•	•
Soborg	•	•	•	•	•	•	•	•	•	•	•	•	•
Trinidad	•	•	•	•	•	•	•	•	•		•	•	•
Wegner 1788 Chair		•	•	•	•	•	•	•	•	•	•	•	•
Wegner Ox & Queen Chair		•	•		•	•		•	•		•	•	LP
Yksi	•	•	•	•	•	•	•	•	•		•	•	•

AS 2 additional seams
on front and back.

LP With leather piping

Bardal

Fabric Group 1



About	Classic, slightly felted wool-viscose blend with a smooth surface and a large scale of colour blends. Suitable for all upholstery.
Composition	70% new wool, 30% viscose
Martindale	62.000
Environment	EU Ecolabel
Flame resistance	FTP Code: Part 8 (IMO A652 (16), EN ISO 1021: Part 1 and 2, Cal TB117;2013
Piling	3-4
Lightfastness	5-7
More info	www.gu.no
Total no. of colours	29



Capture

Fabric Group 1



About	Capture is a lightly felted and multi-coloured wool fabric in a casual yet sophisticated tweed look.
Composition	85% New Zealand wool, 15% polyamide
Martindale	100.000
Environment	EU Ecolabel, OEKO-TEX 100
Flame resistance	BS EN 1021 1&2 Cigarette and Match, BS 5852 Part 1 0 1 Cigarette & match, Class Uno UNI 9175 Class 1 I EMME, CA TB 117-2013, BS 5852 Crib 5 (flame retardant)
Piling	4-5
Lightfastness	5-7
More info	www.gabriel.dk
Total no. of colours	43



Connect

Fabric Group 0



About	Flat weave distinguished by its fusion of wool and recycled polyester. Connect offers high-performance properties and is ideal for high-traffic environments. Suitable for seat upholstery only.
Composition	48% wool, 41% post-consumer recycled polyester, 9% polyamid, 2% polyester
Martindale	90.000
Environment	EU Ecolabel, OEKO-TEX 100
Flame resistance	BS EN 1021-1 Cigarette, BS EN 1021 1&2 Cigarette and Match, BS 5852 Crib 5, CA TB 117-2013, Class Uno UNI 9175 Class 1 I EMME
Piling	4-5
Lightfastness	5-7
More info	www.gabriel.dk
Total no. of colours	38



Cotil 863

Fabric Group 3



About	An iconic Danish wool and cotton blend designed by Børge Mogensen and Lis Ahlman. The checkered pattern is historically found across all of Europe from medieval times, and is equally relevant and modern today. Made in Denmark
Composition	50% wool, 50% cotton
Martindale	30.000
Flame resistance	Cal. Bull. 117-20213 sec. 1
Lightfastness	5-6
More info	www.fredericia.com
Total no. of colours	2



Divina Melange

Fabric Group 3

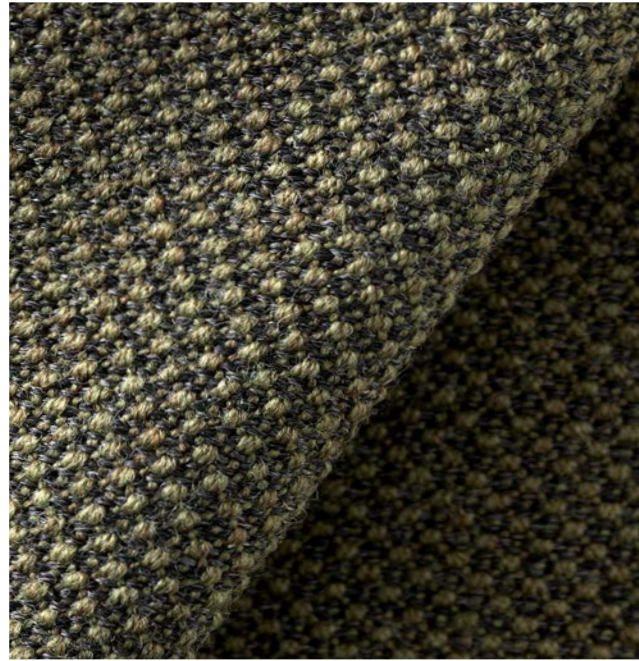


About	Classic wool felt used for furniture as well as clothing. Divina Melange 3 (melange yarns) are suitable for all upholstery. Domestic to moderate public use.
Composition	100% wool
Martindale	45.000
Environment	EU Ecolabel, Greenguard Gold
Flame resistance	AS/NZS 1530.3, BS 5852 Crib 5, BS 5852 part 1, BS 5867 part 2 type B, IMO FTP Code 2010 Part 8, NF D 60 013, NFPA 260, SN 198 898 5.3 with treatment, UNI 9175 1IM, US Cal. Bull. 117-2013, EN 1021-1/2, EN 13501, C-s1, d0, glued, Chinese GB 50222B1 with treatment, ÖNORM B1/Q1, NFPA 701 with treatment, ASTM E84 Class B Unadhered, ASTM E84 Class Adhered
Piling	3
Lightfastness	6-7
More info	www.kvadrat.dk
Total no. of colours	38

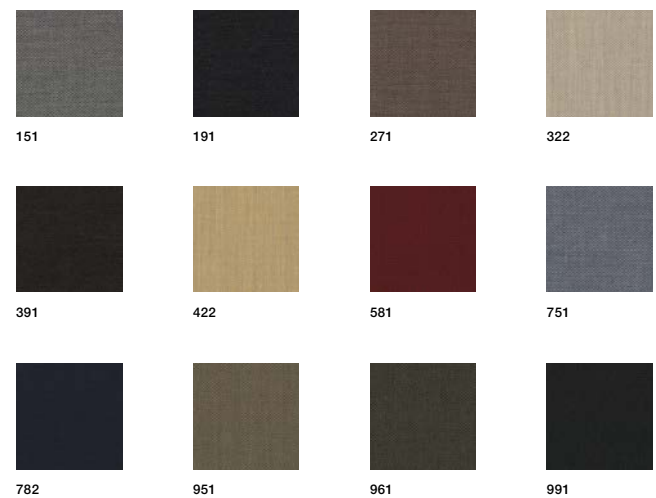


Fiord

Fabric Group 2

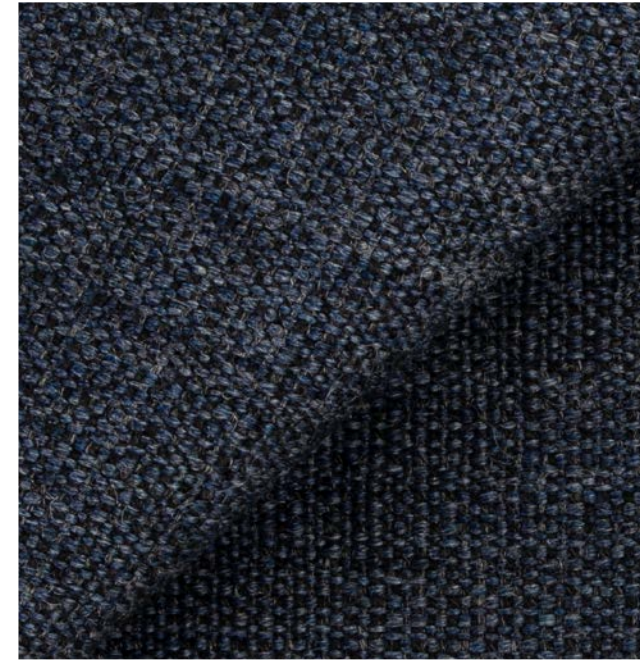


About	A slender woolen body with a soft, nubby surface and subtle colour blends.
Composition	92% wool, 8% polyamide
Martindale	60.000
Environment	EU Ecolabel, Greenguard Gold
Flame resistance	BS 5852 crib 5 with treatment, BS 5852 part 1, IMO FTP Code 2010 Part 8, NF D 60 013, NFPA 260, SN 198 898 5.3 with treatment, UNI 9175 1IM, US Cal. Bull. 117-2013, EN 1021-1/2, ASTM E84 Class A Adhered, ASTM E84 Class A Unadhered, AS/NZS 3837 class 2, GB 50222 B1 with treatment (Chinese), ÖNORM B1/Q1
Piling	4-5
Lightfastness	6
More info	www.kvadrat.dk
Total no. of colours	39



Foss

Fabric Group 2



About	Foss has three to four different melange or unicoloured yarns. Blended with shiny viscose and thick linen yarns the surface has a subtle shimmer while exposing a dry surface look.
Composition	76% new wool worsted, 11% viscose, 8% nylon, 5% linen
Martindale	100.000
Environment	EU Ecolabel, Greenguard Gold
Flame resistance	BS 5852 crib 5 with treatment, NF D 60 013, US Cal. Bull. 117-2013, IMO FTP Code 2010 Part 8, SN 198 898 5.3 with treatment, BS 5852 part 1, EN 1021-1/2
Piling	4
Lightfastness	6-7
More info	www.kvadrat.dk
Total no. of colours	29

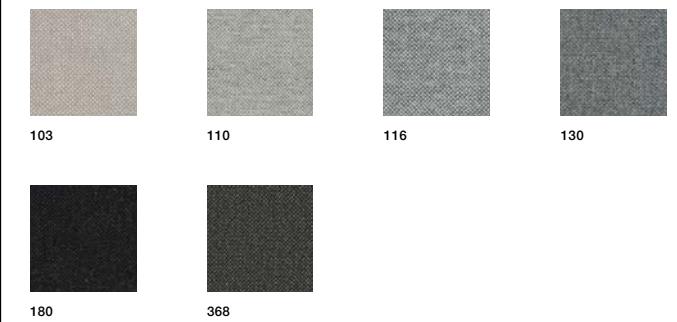


Hallingdal 65

Fabric Group 2



About	Classic wool-viscose blend with voluminous grip and a large scale of colour blends. Suitable for all upholstery. Designed by Nanna Ditzel in 1965.
Composition	70% wool, 30% viscose
Martindale	100.000
Environment	EU Ecolabel, Greenguard Gold
Flame resistance	AS/NZS 1530.3, BS 5852 Crib 5, BS 5852 ignition source 3, BS 5852 part 1, IMO FTP Code 2010 Part 8, NF D 60 013, NFPA 260, UNI 9175 1IM, US Cal. Bull. 117-2013, EN 1021-1/2, ASTM E84 Class A Adhered, SN 198 898 5.3 with treatment, ÖNORM B1/Q1
Piling	3-4
Lightfastness	7
More info	www.kvadrat.dk
Total no. of colours	58



Remix

Fabric Group 1



About	Flat wool textile with a large scale of colour blends.
Composition	90% wool, 10% polyamide
Martindale	100.000
Environment	EU Ecolabel, Greenguard Gold
Flame resistance	AS/NZS 1530.3, BS 5852 crib 5 with treatment, BS 5852 ignition source 3, BS 5852 part 1, IMO FTP Code 2010 Part 7 with treatment, IMO FTP Code 2010 Part 8, NF D 60 013, NFPA 260, SN 198 898 5.3 with treatment, UNI 9175 1IM, US Cal. Bull. 117-2013, EN 1021-1/2, AS/NZS 3837 class 2, ÖNORM B1/Q1
Piling	4
Lightfastness	6
More info	www.kvadrat.dk
Total no. of colours	72



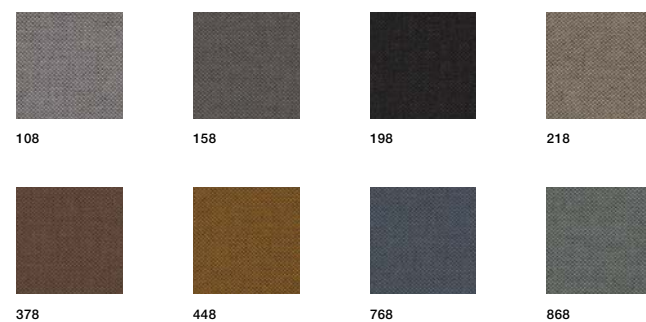
123 143 163 173
196 252 373 422
662 733 954 973

Re-wool

Fabric Group 1



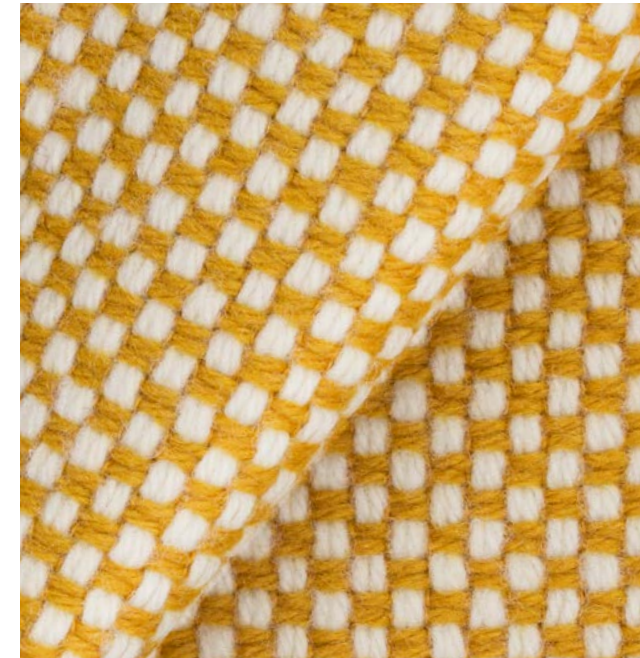
About	Upholstery textile with a subtle yet visible woven structure and soft colourways enriched by sparks. Produced using 45% recycled wool from Kvadrat's English mills.
Composition	45% wool, 45% recycled wool, 10% polyamide
Martindale	100.000
Environment	EU Ecolabel, Greenguard Gold
Flame resistance	AS/NZS 1530.3, BS 5852 crib 5 with treatment, BS 5852 ignition source 3, BS 5852 part 1, IMO FTP Code 2010 Part 8, NF D 60 013, UNI 9175 1IM, US Cal. Bull. 117-2013, EN 1021-1/2, SN 198 898 5.3 with treatment, AS/NZS 3837 class 2, ÖNORM B1/Q1
Piling	4
Lightfastness	5-7
More info	www.kvadrat.dk
Total no. of colours	21



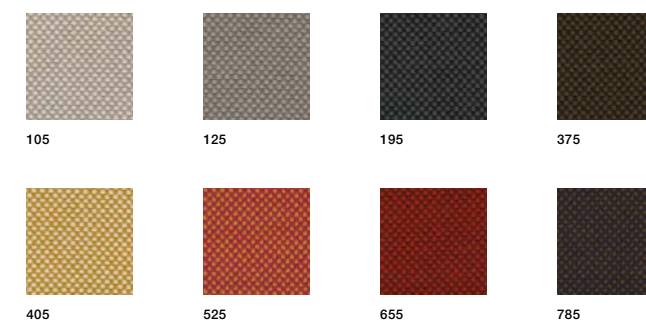
108 158 198 218
378 448 768 868

Sisu

Fabric Group 4



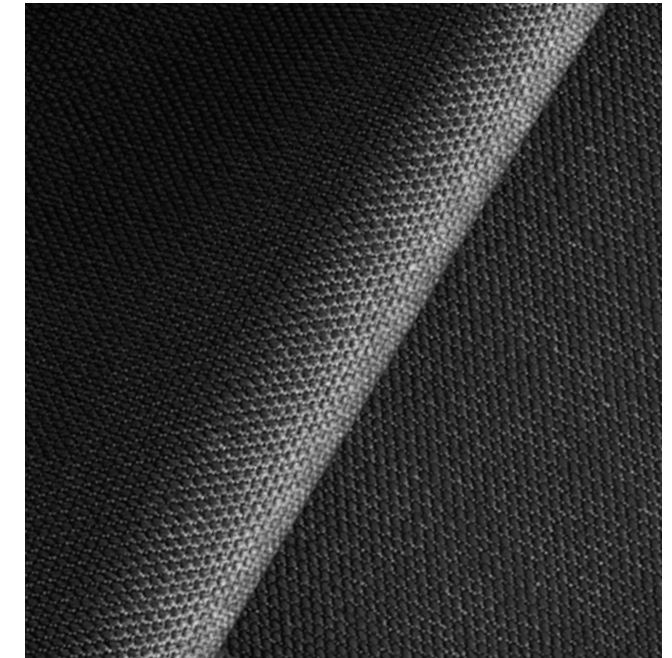
About	Sisu is a checked upholstery designed by Nanna Ditzel, one of Denmark's most renowned designers and an important figure for Fredericia. The textile is woven with thick, voluminous woollen yarns and features a bold yet subtle, checked pattern.
Composition	91% New Norwegian wool, 8% new New Zealand wool, 1% nylon
Martindale	70.000
Environment	Greenguard Gold
Flame resistance	UNI 9175 1IM, US Cal. Bull. 117-2013, BS 5852 part 1, EN 1021-1/2, AS/NZS 3837 class 2, IMO FTP Code 2010 Part 8, BS 5852 crib 5 with treatment, NF D 60 013, ASTM E84 Class B Adhered, ASTM E84 Class B Unadhered
Piling	3-4
Lightfastness	7
More info	www.kvadrat.dk
Total no. of colours	16



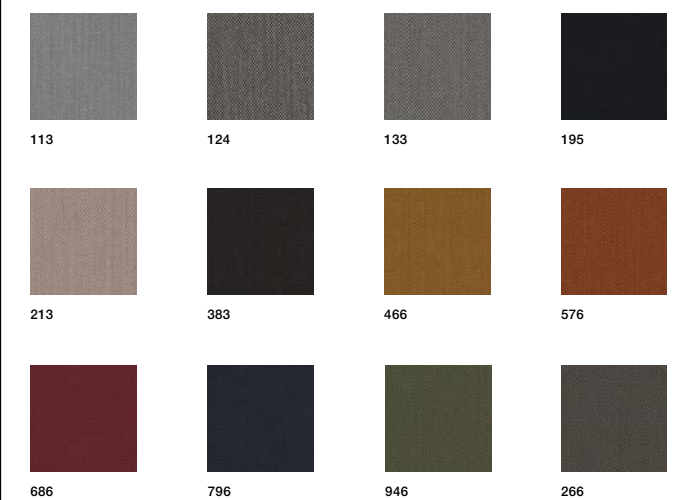
105 125 195 375
405 525 655 785

Steelcut Trio

Fabric Group 2



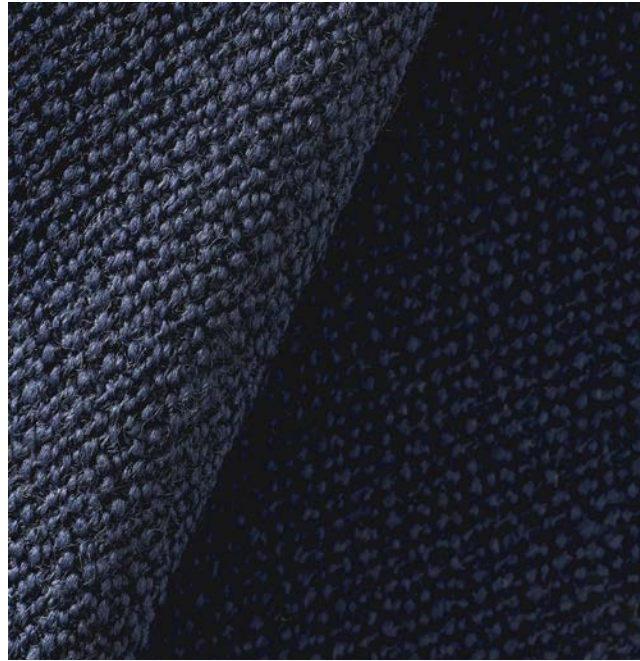
About	Tightly woven wool textile in three-colour mix.
Composition	90% wool, 10% polyamide
Martindale	100.000
Environment	EU Ecolabel, Greenguard Gold
Flame resistance	AS/NZS 1530.3, BS 5852 crib 5 with treatment, BS 5852 ignition source 3, BS 5852 part 1, IMO FTP Code 2010 Part 8, NF D 60 013, NFPA 260, SN 198 898 5.3 with treatment, UNI 9175 1IM, US Cal. Bull. 117-2013, EN 1021-1/2, ASTM E84 Class B Unadhered, ASTM E84 Class B Adhered, ÖNORM B1/Q1, AS/NZS 3837 class 2
Piling	4
Lightfastness	6-7
More info	www.kvadrat.dk
Total no. of colours	54



113 124 133 195
213 383 466 576
686 796 946 266

Vidar

Fabric Group 3



About	Elegant tightly woven wool textile with a matt, harmonious surface and a beautiful crepe texture.
Composition	94% wool, 6% polyamide
Martindale	100.000
Environment	EU Ecolabel, Greenguard Gold
Flame resistance	BS 5852 crib 5 with treatment, BS 5852 part 1, IMO FTP Code 2010 Part 8, NF D 60 013, NFPA 260, UNI 9175 1IM, US Cal. Bull. 117-2013, EN 1021-1/2, AS/NZS 3837 class 2, GB 50222 B1 with treatment (Chinese), SN 198 898 5.3 with treatment
Piling	4
Lightfastness	7
More info	www.kvadrat.dk
Total no. of colours	41



146 182 222 472



554 582 693 972



1880

Linen & Soft Unions

Anta, Clay, Grand Linen, Linara, Natural Linen, Ruskin, Sunniva

Cotton and linen fibres make exceptionally soft and skin-friendly fabrics. Whilst some of the fabrics in this group are combined with a percentage of wool, the result is a more durable fabric that's easier to maintain. As opposed to most soft union fabrics that must be kept well in order to keep their appearance. The vegetal fibres are especially suitable for damp climates, since they tend to have a cooling effect due to their breathability and ability to absorb humidity.



Wegner Ox Chair and Ottoman by Hans J. Wegner
Upholstery: Grand Linen 0024
Base: Brushed chrome
Islets Side Table by Maria Bruun
Silhouette Mirror by OEO Studio

Application Matrix Linen & Soft Unions

	Grand Linen	Linara	Natural Linen	Ruskin	Anta	Clay	Sunniva
Fabric group	1	1	1	1	2	2	2
A-chair	•	•		•	•	•	
Calmo	•	•	•	•	•	•	•
Corona Chair	•	•	•	•	•	•	•
Delphi Sofa		•		•	•	•	
Ditzel Lounge		•		•	•	•	AS
EJ50 Sofa		•		•	•	•	•
EJ220 Sofa	•	•	•	•	•	•	•
EJ280 Sofa	•	•		•	•	•	•
EJ288 Sofa	•	•		•	•	•	•
EJ295 Chaise Sofa		•		•	•	•	•
EJ315 Sofa		•	•	•	•	•	•
Eyes		•		•	•	•	•
Flamingo Chair		•		•	•	•	•
Haiku		•		•	•	•	•
Konami Sofa	•				•		
Mogensen 22 collection	•			•	•		•
Mogensen 23 collection	•	•		•	•	•	•
Mogensen Bench & Chair	•		•	•	•	•	•
Mono Pouf	•	•		•	•	•	•
No. 1		•		•	•	•	•
Pato		•		•	•	•	•
Post Chair	•	•	•	•	•	•	•
Savannah	•	•			•	•	
Spine	•	•		•	•	•	•
Spine Lounge	•	•		•	•	•	•
Spoke back collection	•	•	•	•	•	•	•
Swoon		•		•	•	•	•
Soborg	•	•	•	•	•	•	•
Trinidad	•	•	•	•	•	•	•
Wegner 1788 Chair	•	•	•	•	•		•
Wegner Ox & Queen Chair	•	•		•	•	•	•
Yksi	•	•		•	•	•	•

AS 2 additional seams
on front and back.

Anta

Fabric Group 2



About	An elegant soft linen blend with a subtle yet elegant shine. A high performance surface with increased resistance to abrasion but without compromising the elegant texture of linen.
Composition	90% linen, 10% polyamide
Martindale	80.000
Environment	OEKO-TEX
Flame resistance	BS 5852 Source 0 Cigarette, 117-2013 Technical Bulletin
Piling	3-4
Lightfastness	5
More info	www.fredericia.com
Total no. of colours	20

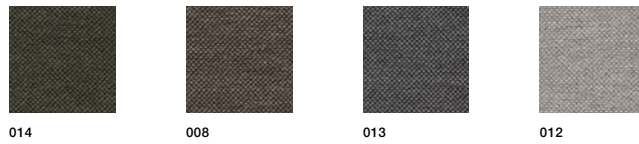


Clay

Fabric Group 2



About	An elegant yet casual linen / cotton fabric with a structured two-toned surface. With a back cloth that gives extra stability, Clay is perfect for upholstering sofas.
Composition	76% linen, 21% cotton, 3% polyester
Martindale	45.000
Environment	Greenguard Gold
Flame resistance	US Cal. Bull. 117-2013, BS 5852 crib 5 with treatment, BS 5852 part 1, EN 1021-1/2
Piling	4
Lightfastness	4
More info	www.kvadrat.dk
Total no. of colours	17



Grand Linen

Fabric Group 1



About	A casual, and rustic yet elegant flat weave made from 100% natural uncoloured linen. The Masters of Linen certification guarantees the raw materials are naturally grown, and that crops are managed to protect biodiversity.
Composition	100% linen
Martindale	30.000
Environment	Masters of Linen
Lightfastness	3-4
More info	www.fredericia.com



Linara

Fabric Group 1



About	Cotton-linen blend with a brushed finish and a soft, peach-skin feel. Very versatile plain for soft upholstery.
Composition	63% Cotton, 37% Linen
Martindale	36.000
Environment	OEKO-TEX 100
Flame resistance	UK BS 5852 Part 1 IGN 0 Cigarette, UK BS 5852 Part 1 Exempt (with IGN 5 Interliner), EU EN1021 PART 1 Upholstery, US CAL117, US NFPA260
Piling	4
Lightfastness	5
More info	www.romo.com
Total no. of colours	360



Natural Linen

Fabric Group 1



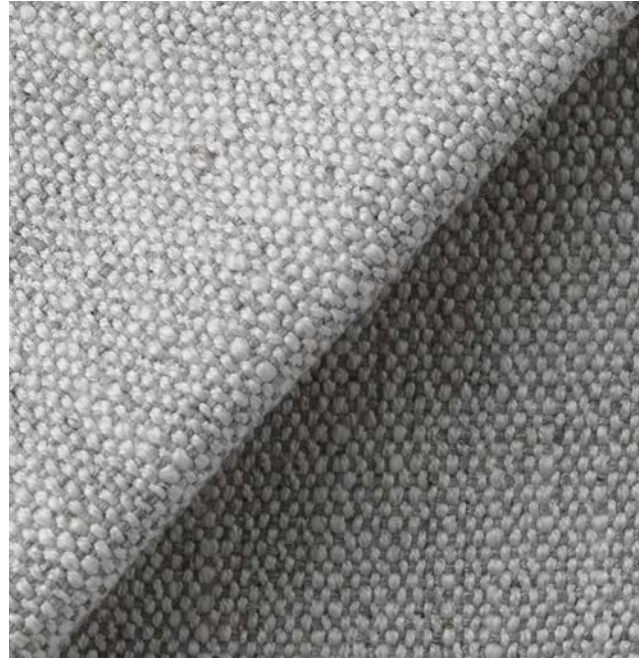
About	A slender flat weave linen made from natural uncoloured linen. The Masters of Linen certification gaurentees the raw materials are naturally grown, from European origin and that crops are mangaged to protect biodiversity.
Composition	91% linen, 9% polyamide
Martindale	28.000
Environment	Masters of Linen
More info	www.fredericia.com



0003

Ruskin

Fabric Group 1



About	Soft and elegant textile combining viscose and linen creating motion and depth in the colourways. Discrete yet visible surface structure.
Composition	70% viscose, 15% linen, 10% wool, 5% polyamide
Martindale	60.000
Flame resistance	EU 1021-1&2, UK BS 5852 Part 1 IGN 0 cigarette, US NFPA260
Piling	3-4
Lightfastness	5
More info	www.romo.com
Total no. of colours	41



10



13



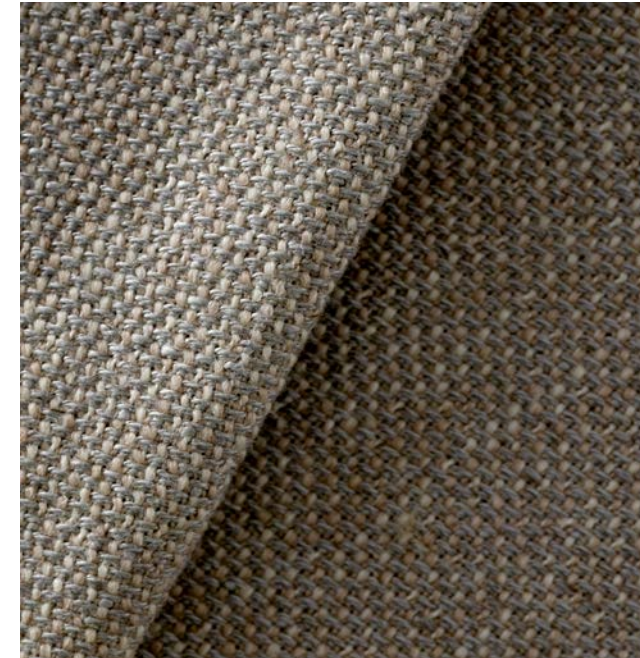
16



34

Sunniva

Fabric Group 2



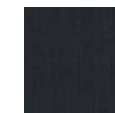
About	Wool/viscose/linen mix with a classic look and natural shine. Natural and subtle colourways.
Composition	58% wool, 25% viscose, 8% linen, 5% polyamide, 4% polyester
Martindale	50.000
Environment	Greenguard Gold
Flame resistance	BS 5852 crib 5 with treatment, IMO FTP Code 2010:Part 8 with treatment, NFPA 260, US Cal. Bull. 117-2013, EN 1021-1/2, AS/NZS 3837 class 2
Piling	3
Lightfastness	5
More info	www.kvadrat.dk
Total no. of colours	35



242



717



783



173



192



811



183



383



662

Wegner Queen Chair by Hans J. Wegner
Fabric: Clay 12
Base: Brushed chrome
Sequoia Pouf by Space Copenhagen
Fabric: Carlotta 200
Pal Table by Keiji Takuchi
Meadow Lamp by Space Copenhagen



Bouclé

Carlotto, Loop, Elle, Safire

Given the three-dimensional surface texture, bouclé adds depth and a lush sense of luxury to any furniture or design. Primarily composed of wool, the fabrics in this group are naturally flame retardant and soil resistant. The bouclés vary from heavy and plush to more slender bouclé, where the binding adds vibrancy to tight upholsteries.



Sequoia Pouf by Space Copenhagen
Fabric: Carlotto 200
Meadow Lamp by Space Copenhagen
Hydro Vase by Sofie Østerby

Application Matrix

Bouclé

	Carlotta	Loop	Elle	Safire
Fabric group	2	2	3	4
A-chair	•	•	•	•
Calmo	•	•		•
Corona Chair	•	•	•	•
Delphi Sofa	•	•		•
Ditzel Lounge	•	•	AS	AS
EJ50 Sofa	•	•		•
EJ220 Sofa	•	•	•	•
EJ280 Sofa	•	•		•
EJ288 Sofa	•	•		•
EJ295 Chaise Sofa		•		•
EJ315 Sofa				
Eyes	•	•	•	•
Flamingo Chair	•		•	•
Haiku	•	•		•
Konami Sofa	•	•	•	•
Mogensen 22 collection				
Mogensen 23 collection		•		
Mogensen Bench & Chair	•	•		
Mono Pouf		•		
No. 1		•		•
Pato	•	•		•
Post Chair				
Savannah	•			
Spine	•	•		•
Spine Lounge	•	•		•
Spoke back collection				
Swoon	•	•	•	•
Soborg	•	•	•	•
Trinidad	•	•		•
Wegner 1788 Chair	•			
Wegner Ox & Queen Chair	LP	LP	LP	LP
Yksi	•	•		•

AS 2 additional seams on front and back. LP With leather piping

Carlotto

Fabric Group 2



About	A full bodied wool bouclé with a tight surface structure. Suitable for both private and public use. Made in Italy and supplied directly to Fredericia.
Composition	38% wool, 37% polyacrylic, 18% polyester, 7% cotton
Martindale	100.000
Environment	OEKO-TEX
Flame resistance	BS 5852 : 2006 - Source 0, BS 5852 : 2006 - Source 1
Piling	4
Lightfastness	4-5
More info	www.fredericia.com
Total no. of colours	4

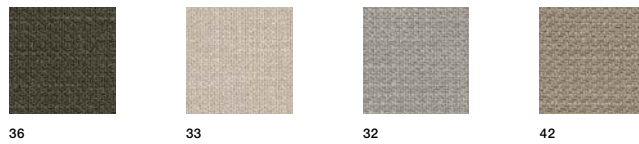


Loop

Fabric Group 2



About	A flattened and textured semi-plain bouclé weave.
Composition	46% acrylic, 23% wool, 15% cotton, 12% nylon, 4% polyester
Martindale	60.000
Flame resistance	EU EN1021 Part 1 Upholstery, US CAL117, US NFPA260
Lightfastness	5
More info	www.kirkbydesign.com
Total no. of colours	25

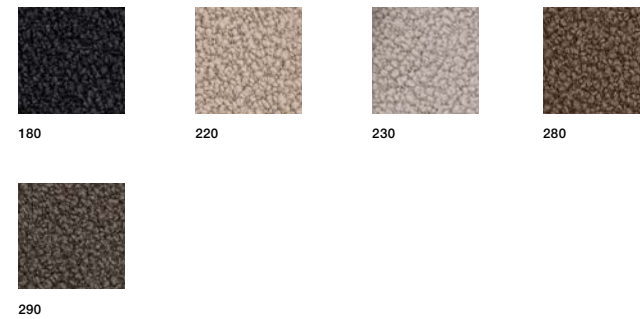


Elle

Fabric Group 3



About	Wool and cotton has been combined to make this soft voluminous bouclé fabric. An uneven surface rich in texture with a soft hand-feel and good resistance to abrasion.
Composition	25% cotton, 20% wool, 20% viscose, 20% polyacrylic, 15% polyamide
Martindale	70.000
Environment	Greenguard Gold
Flame resistance	EN 1021-1/2, BS 5852 part 1
Piling	4
Lightfastness	6
More info	www.kvadrat.com
Total no. of colours	14



Safire

Fabric Group 4



About	A slightly coarse surface structure gives a subtle handwoven appearance. The thick boucle and chenille yarns contribute to its wooly handle and soft appeal with a two-tone effect.
Composition	43% viscose, 17% polyacrylic, 15% new wool, 9% cotton, 8% polyester, 8% linen
Martindale	44.000
Environment	Greenguard Gold
Flame resistance	EN 1021-1/2, US Cal. Bull. 117-2013, BS 5852 part 1, BS 5852 crib 5 with treatment
Piling	3
Lightfastness	5-6
More info	www.kvadrat.dk
Total no. of colours	17



Velvet

Harald, Savoy, Gentle, Grand Mohair

Whether made of cotton or mohair wool, what all our velvets share is a soft touch and sense of sophistication. Not to mention their ability to exude depth and character in terms of colours. The open pile characteristic of velvet makes it sensitive to dirt and vulnerable to showing indentations from transportation or usage. All velvets must be vacuumed and occasionally brushed or steamed to maintain their appearance over time.



Swoon Lounge Chair by Space Copenhagen
Fabric: Savoy 66165
Wood: Smoked oak stained
Sequoia Pouf by Space Copenhagen
Fabric: Carlotto 200
Pal Table by Keiji Takeuchi
Wood: Oak light oil
Base: Black powder coated steel
Meadow Lamp by Space Copenhagen

Application Matrix

Velvet

	Harald	Savoy	Grand Mohair	Gentle
Fabric group	2	2	4	5
A-chair			•	•
Calmo	•	•		•
Corona Chair	•	•	•	•
Delphi Sofa				•
Ditzel Lounge				•
EJ50 Sofa	•	•	•	•
EJ220 Sofa	•	•	•	•
EJ280 Sofa	•	•	•	•
EJ288 Sofa	•	•	•	•
EJ295 Chaise Sofa				•
EJ315 Sofa	•	•		
Eyes	•	•	•	•
Flamingo Chair	•		•	•
Haiku	•		•	•
Konami Sofa				•
Mogensen 22 collection	•			
Mogensen 23 collection	•	•		
Mogensen Bench & Chair	•	•	•	•
Mono Pouf	•	•	•	•
No. 1	•	•		•
Pato	•			•
Post Chair	•	•		•
Savannah				•
Spine	•	•		•
Spine Lounge	•	•	•	•
Spoke back collection				
Swoon	•	•	•	•
Søborg	•	•	•	•
Trinidad	•	•	•	•
Wegner 1788 Chair				
Wegner Ox & Queen Chair			LP	•
Yksi	•	•	•	•

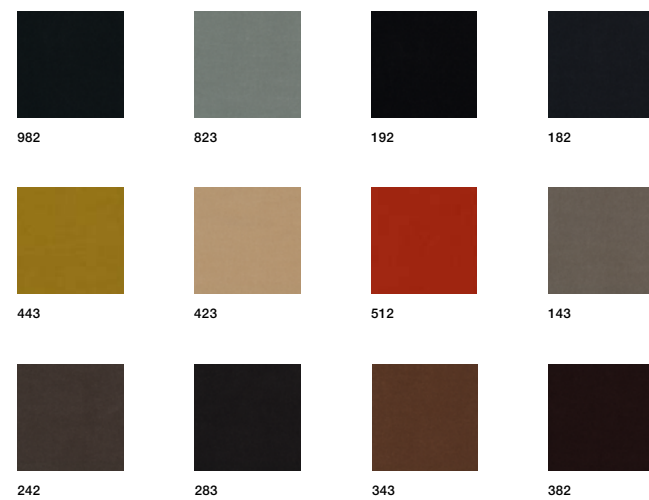
LP With leather piping

Harald

Fabric Group 2



About	Cotton velour with a tight pile. Velour can acquire press marks either from transport or in use. Suitable for domestic to moderate public use. From the Raf Simons collection
Composition	100% cotton
Martindale	100.000
Environment	Greenguard Gold
Flame resistance	AS/NZS 1530.3, EN 1021-1, AS/NZS 3837 class 1
Piling	4-5
Lightfastness	5-6
More info	www.kvadrat.dk
Total no. of colours	30



Savoy

Fabric Group 2



About	Savoy is a short pile velvet upholstery fabric made from high-performing, wear-resistant and flame-retardant Trevira CS polyester. It is suitable for residential as well as commercial interiors alike.
Composition	100% Trevira CS
Martindale	100.000
Environment	EU Ecolabel, OEKO-TEX 100
Flame resistance	BS EN 1021-1 Cigarette, BS EN 1021-2 Match, BS 5852 Crib 5, DIN 4102 - B1, NFP 92-503/504/505 M1, AM 18 - NF D 60-013-(only for fabric), Class Uno UNI 9175 Class 1 I EMME, CA TB 117-2013
Piling	5
Lightfastness	5-8
More info	www.gabriel.dk
Total no. of colours	35

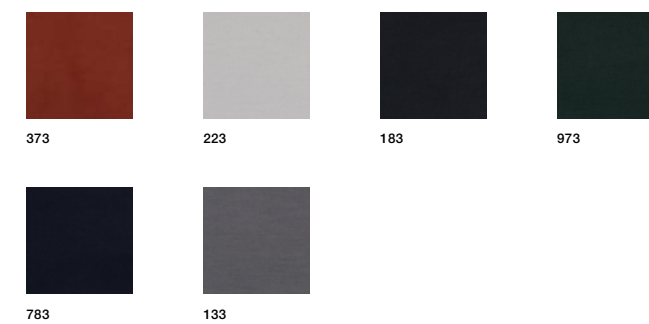


Gentle

Fabric Group 5



About	Innovative velvet on a knitted base, which makes it exceptionally suitable for certain curved upholstery. The surface and colour scale of this wool and polyamide union has an exclusive dry look. Designed by Febrik.
Composition	60% new wool, 20% polyester, 20% nylon
Martindale	90.000
Environment	Greenguard Gold
Flame resistance	ASTM E84 Class A Adhered, US Cal. Bull. 117-2013, UNI 9175 1IM, DIN 4102 B2, BS 5852 crib 5 with treatment, BS 5852 part 1, EN 1021-1/2, IMO FTP Code 2010 Part 8
Piling	4-5
Lightfastness	6-7
More info	www.kvadrat.dk
Total no. of colours	21



Grand Mohair

Fabric Group 4



About	Classic Mohair velvet with a tight and elegant pile rich colourways. Suitable for both residential and contract use.
Composition	100% mohair (pile), 100% cotton (base)
Martindale	+100.000 (wyzenbeek)
Environment	OEKO-TEX 100, Cradle-to-Cradle
Flame resistance	Cal 117-2013, NFPA 260 Class 1, BS 5852: 2006 clause 11, Crib 5 EN 1021 1 & 2.
Lightfastness	4-5
More info	www.danishartweaving.com
Total no. of colours	36



Spanish Chair by Børge Mogensen
Cognac saddle leather
Wood: Oak oil
Calmo 3 seater 80 Metal Base
Fabric: Ruskin 10
Base: Black

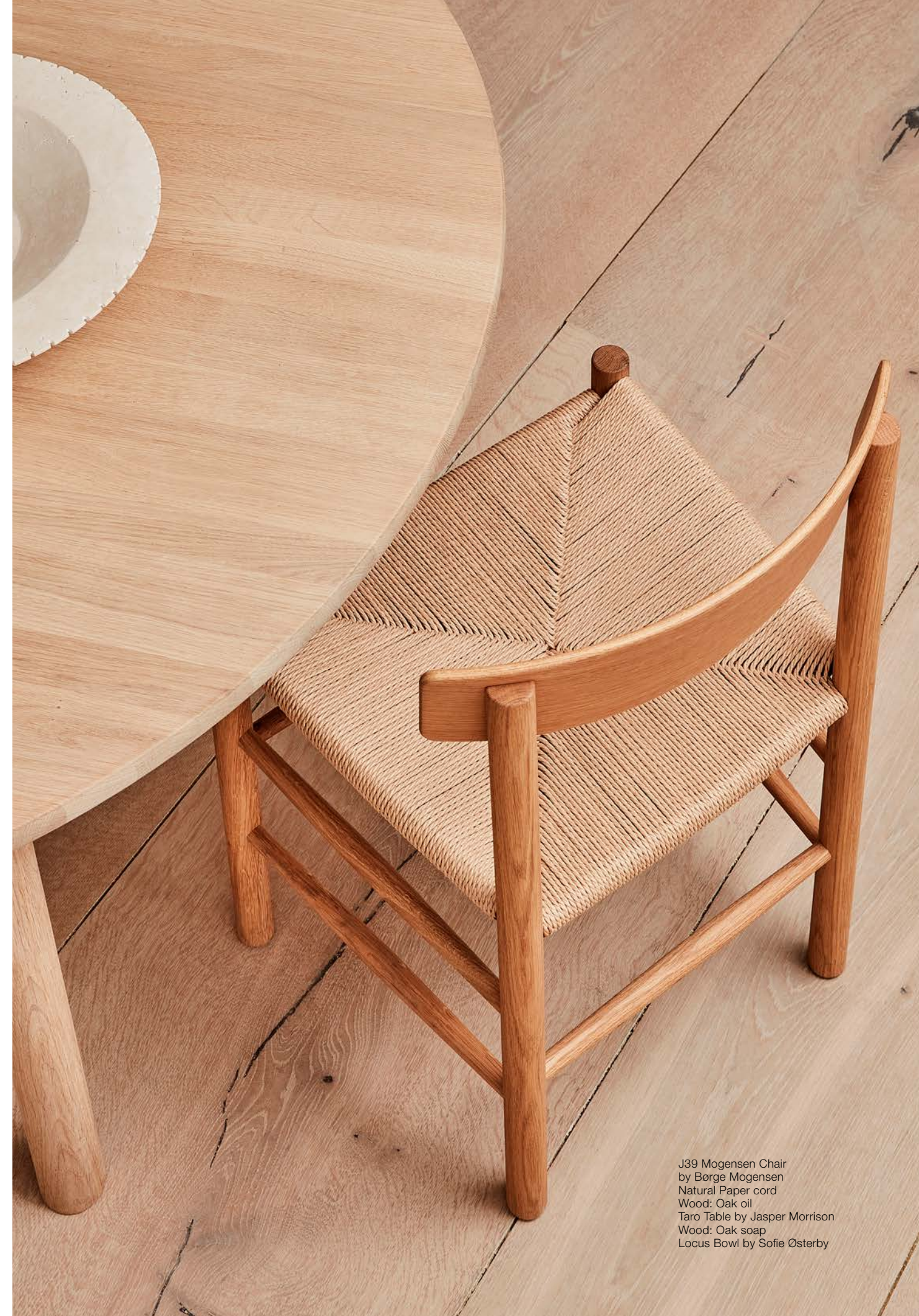


Wood

Oak lacquered, Oak light oil, Oak oil, Oak soap, Smoked oak oil, Smoked oak stained, Walnut oil, Walnut lacquered, Beech soap, Beech lacquered, Black lacquered, White painted, Light grey oak stained, Grey oak stained, Deep red

Most of our furniture at Fredericia is crafted from wood, a material appreciated for its inherent beauty and ability to age with grace over time. Wood is a natural material that is a vital part of the world's eco system. So we see it as our duty when working with wood to create functional designs. Honouring the time it takes to grow an oak tree – about 150 years or more.

We insist on using a premium selection of wood from responsible and renewable European forests, sourced locally to help reduce the environmental impact from transportation and forest felling. Fredericia is a FSC® certified manufacturer (License Number: FSC 151292). Our preferred wood is European oak, which is a strong wood native to Danish forests with a light appearance and a lovely patina that will emerge over time.



J39 Mogensen Chair
by Borge Mogensen
Natural Paper cord
Wood: Oak oil
Taro Table by Jasper Morrison
Wood: Oak soap
Locus Bowl by Sofie Østerby

Application Matrix Wood

	Oak lacquered	Oak light oil	Oak oil	Oak soap	Smoked oak oil	Smoked oak stained	Black lacquered	Walnut lacquered	Walnut oil	Other
A-chair	●		○				●	●		
Ana				●		●				
Calmo	●					●				
Canvas Chair		●		●			●			
Delphi Sofa		●								
Ditzel Lounge	●		○			●	●	●		
EJ220 Sofa	●			●						
EJ280 Sofa				●						
EJ288 Sofa	●			●						
EJ315 Sofa		●	○	●			●	○	●	
Eyes Lounge Wood base	●					●	●			
Gallery stool							●	●		
The Hunting Chair		●	●	●	●		●			
Islets		●								
J16 Wegner Rocking Chair	○	●	○	●			●	○	●	
J39 Mogensen Chair		●	●	●			●	○	●	Beech soap, Beech black lacquered, Beech white painted
J63 Stool & J64 Chair							●			White ash
The Lynderup Chair	●						●	●		Deep red
Magazine Table	●						●			
Mogensen 22 collection	○	●	●	●			●	○	●	
Mogensen 23 collection	○	●	○	○			●			
Mogensen Bench	○	●	○	●	●		●			
Mogensen BM61/62 - Cane Wicker	●		●							
Mogensen BM61/62 - Linen Webbing	●		●				●			
Mogensen BM71 Library Table	●		●							
Mogensen 3236 Chair		○	○	●			●			
Mogensen Tables C18/6284/6286/6386	○	●	○	●	●					
Nara	●						●			
No. 1	○	●	○	●			●			
Pal	○	●					●	○	●	
Pato Table	○	●	○		●					
Pato Wood	●					○	●			
Piloti	○	●	○	○	●		●			
Pon	○	●	○	●	●		●			
Post Chair	●	●					●			
Post Table	○	●		●	●					
Savannah		●					●			
Silhouette Mirror		●							●	
The Spanish Chair / Dining Chair		●	●	●	●		●			
Spine	●					●	●			
The Spoke Back Sofa	○		○	●			●			Oak white painted
Swoon	●		○			●	●	●		
Seborg	●		●				●	●		
Taro	○	●	○	●	●					
Trinidad	●					●	●	●		Beech lacquered, Grey oak stained, Light grey oak stained
Wegner 1788 Chair	○		○	●			●			
Yksi	●		○				●			

● Standard Assortment
○ Available with upcharge

Oak lacquered



European oak. A light lacquer treatment partially fills the grain, so the wood structure can be seen on the surface. Oak has a relatively open surface with a visible grain structure. This light lacquer treatment is gentler than a dense lacquer, consequently scratches will not be easily exposed. The wood itself has a nice tactile feel and the natural ageing over time will be more beautiful. A delicate white pigment is added to the lacquer to maintain the light appearance of the oak. Flecking is a lovely effect that can naturally occur in solid oak.

Oak light oil



Fredericia's standard oil finish Oak light oil is a clear, light and natural oil which complies with eco-certification. This oil contains a lighting pigment which is impregnated into the surface and gives a beautiful light oak tone and improves the lightfastness. The oil seals the surface to improve the water and stain resistance, while keeping the natural tactility and beautiful patina of solid wood. Over time and with use, the oil will dry out and new oil should be applied to avoid a dull surface. Oak light oil is designed to match the finish Oak lacquered in colour, however, natural colour differences are part of the authentic character of wood.

Smoked oak oil



European oak. Smoked oak with oil treatment is only used for solid wood. The oak is fumed in special steam that darkens the surface and makes the colour more brown. Different parts of the solid oak absorb the fume to different degrees and colour differences will naturally occur. After fuming, the oil treatment further enhances the warm tones of the oak. The oil used is a clear, natural oil. This seals the surface to make it water and stain resistant, thus minimising any visible marks. Over time, the oil will dry out and new oil must be applied to avoid a dull surface. Beautiful flecking is an effect that can naturally occur in solid oak.

Smoked oak stained



European oak. Smoked oak stained is a stain treatment that resembles the colour of smoked oak. It is used in furniture where the natural variation in wood requires a more harmonious result than what fumed smoked oak can offer. Fredericia uses a stain solution that enhances the warm tones of the oak and reveals the natural wood structure. After staining, the wood is covered with a delicate layer of lacquer. As a result, smoked oak stained is easy to maintain and able to resist stains and water quite well.

Oak oil



The finish Oak oil enhances the warm yellow tones of the oak. The oil used is a clear, natural oil. This seals the surface to improve the water and stain resistance, thus minimizing any visible marks. The oil is absorbed into the wood and creates a smooth surface with a silky touch. Over time, the oil will dry out and new oil must be applied to avoid a dull surface. Oak has a relatively open surface with a visible grain structure. Oak flecking becomes more visible in oiled oak, and large colour differences can naturally occur.

Oak soap



Soap treatment is a finish that leaves the surface as raw and natural as possible. The natural oils of the soap gently seal the wood and gives it some stain resistance, however a new soap treatment must be applied from time to time to maintain the appearance. Soaped oak is light when new and darkens over time. Oak has a relatively open surface with a visible grain structure, where beautiful flecking is an effect that can naturally occur in solid oak.

Walnut oil



American walnut with a tight, "closed" surface structure. The oil used is a clear, natural oil. This seals the surface to make it water and stain resistant, thus minimising any visible marks. The oil is absorbed into the wood and creates a smooth surface with a silky touch. Over time, the oil will dry out and new oil must be applied to avoid a dull surface.

Walnut lacquered



American walnut with a tight, "closed" surface structure. A light lacquer treatment that partially fills the grain is applied to seal the surface and make it stain and water resistant. This light lacquer treatment is gentler than a dense lacquer, consequently scratches will not be easily exposed. The wood itself has a nice tactile feel and the natural ageing over time will be more beautiful. The lacquer applied to walnut is clear without any colour pigment.

Beech soap



European beech. Soap treatment is a finish that leaves the surface as raw and natural as possible. The natural oils of the soap gently seals the wood and gives it some stain resistance, however, new soap must be applied from time to time to maintain the appearance. Soaped beech is light when new and darkens over time. Beech has a tight and harmonious surface structure with a smooth tactile feel.

Beech lacquered



European beech has a tight and harmonious surface structure. A light lacquer treatment partially fills the grain so the wood structure can be seen on the surface. This light lacquer treatment is gentler than a dense lacquer, consequently scratches will not be easily exposed. The wood itself has a nice tactile feel and the natural ageing over time will be more beautiful. A delicate white pigment is added to the lacquer to maintain the light appearance of the beech.

Light grey oak stained



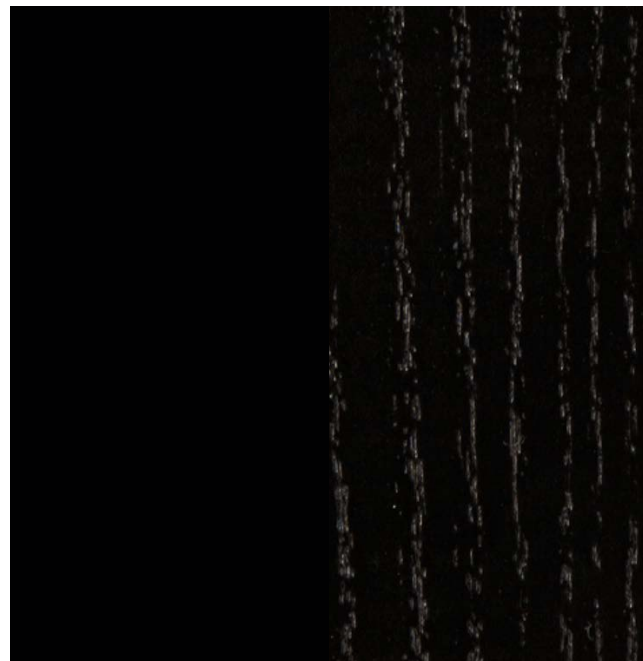
European oak. A stain treatment that reveals the wood structure whilst adding light grey tones to the surface. After staining, the wood is covered with a delicate layer of lacquer. As a result, light grey oak stained is easy to maintain and able to resist stains and water quite well.

Grey oak stained



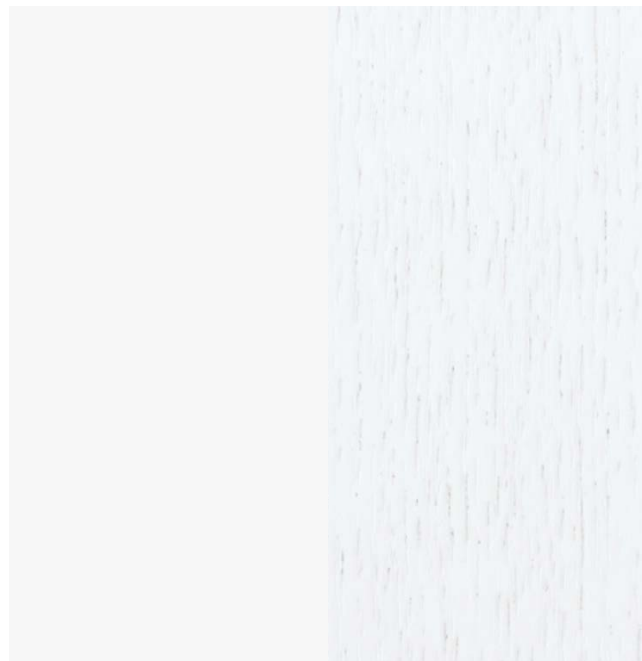
European oak. A stain treatment that reveals the wood structure whilst adding grey tones to the surface. After staining, the wood is covered with a delicate layer of lacquer. As a result, grey oak stained is easy to maintain and able to resist stains and water quite well.

Black lacquered



Black lacquer in RAL 9005 colour. After the black lacquer is applied to oak or ash, the grain structure of both will be visible. Applied to beech, the surface structure becomes more harmonious, where the visible grain structure is limited.

White painted



Painted white RAL 9016. After the white lacquer is applied to oak or ash, the grain structure of both will be visible. Applied to beech, the surface structure becomes more harmonious, where the visible grain structure is limited.

Deep red



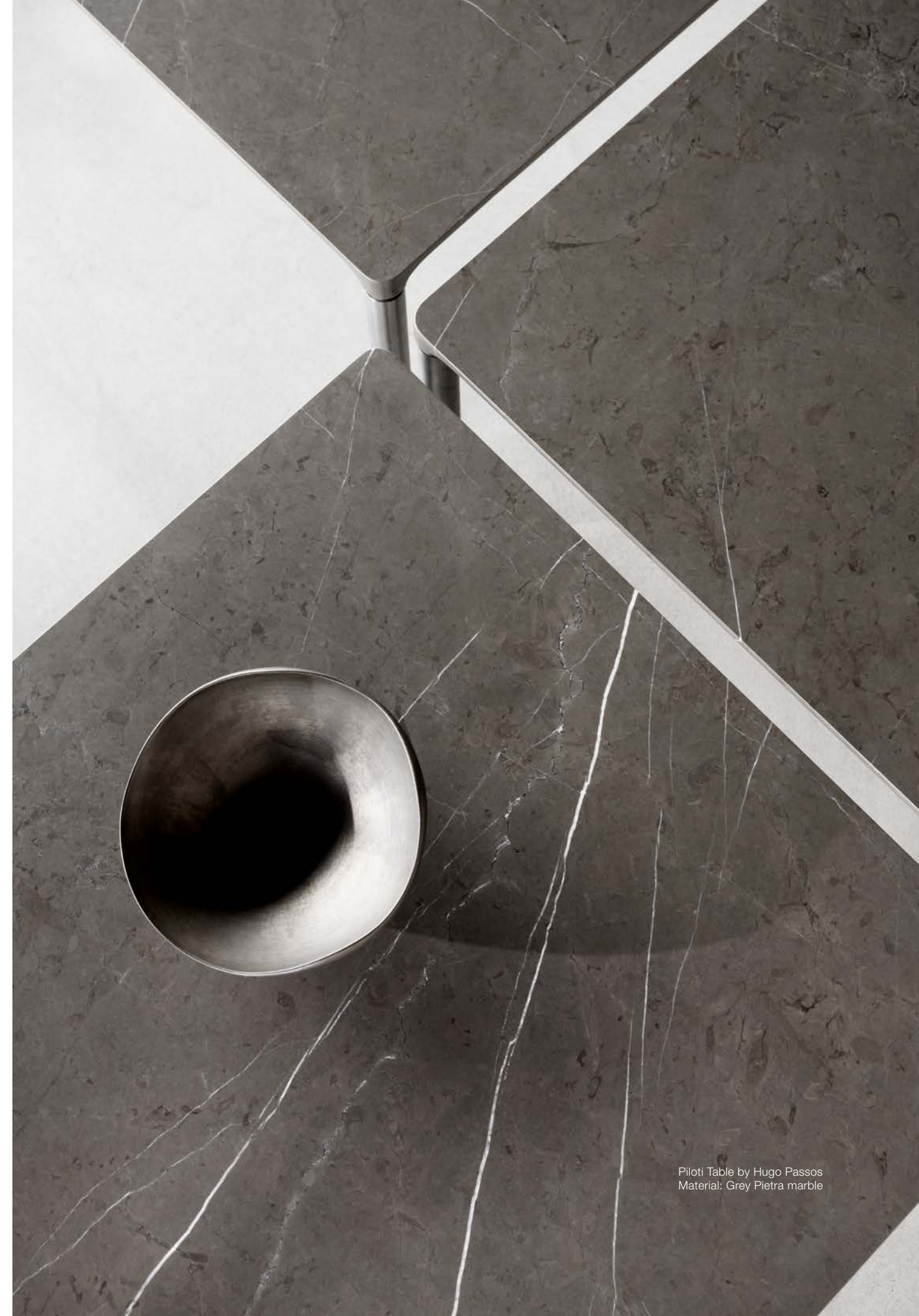
Painted red in NCS S 5540-Y90R. Ash is chosen for its notable surface structure, which is visible as a wooden grain after applying the surface treatment.

Stone

Dark Atlantico, Grey Pietra, Black Marquina, White Carrara

Marble and limestone are natural materials where two surfaces are never alike. The stones can contain sediments from fossils, sand holes, glass veins and porosity and all are indicators of genuine stone while attributing to the natural character of the surface. Embracing the beauty of imperfection, these natural characteristics make each table unique enhancing the exclusive and tactile quality of stone.

All Fredericia's stone are treated with stone oil. As a natural material, stone is susceptible to corrosion and stains and thus requires periodically maintenance to preserve the stone's natural beauty and elegance. Please see Fredericia's Cleaning and Maintenance Guide for further information.



Piloti Table by Hugo Passos
Material: Grey Pietra marble

Application Matrix

Stone

Dark Atlantico limestone



Dark Atlantico is a limestone with a beautiful natural surface and warm colour tones in umbra grey shades. It should be treated as marble, which is actually crystallised limestone. Part of the intriguing nature of limestone is the subtle, possible aspect of fossils. Whilst limestone is native to the Nordic countries, Fredericia's Dark Atlantico Limestone is sourced from Portugal.

Grey Pietra marble



Grey Pietra is a marble with a matt, grey surface with natural, irregular flecks of white. The grey colour of the background can appear uniform but the nuances of grey can vary. The fine white streaks and slightly darker grey glazes give the surface an animated and elegant look. Grey Pietra is sourced from Turkey.

Black Marquina marble



Black Marquina is an elegant marble with a matt, black surface with natural strong white veins. The intense marble takes its name from the quarries around the town of Marquina from which it is extracted. The irregular white veins can vary considerably from batch to batch. Black Marquina is sourced from Spain.

White Carrara marble



White Carrara is a classic white marble with a matt surface, characterized by the occurrence of natural and irregular grey veins. White Carrara has been used for centuries by architects, designers and artists alike. The white surface can vary in tone and the occurrence of grey to almost black veins can likewise vary in quantity and strength. White Carrara is sourced from Italy.

	Black Marquina	Dark Atlantico	Grey Pietra	White Carrara
EJ66 Table	•		•	•
Piloti Stone			•	
Tableau		•		
Pato Table				•

Metal

Pato Office Chair by Welling/Ludvik
Leather: Max 93 Indian red
Base: Polished aluminium
Mesa Table by Welling/Ludvik
Table top: Black linoleum
Frame: Black painted aluminium



Chrome/Polished aluminium



Steel in smooth finish, which is subsequently chromed (Chrome III) and finished with a clear lacquer. Occasionally combined with polished aluminium parts. The surface matches polished aluminium.

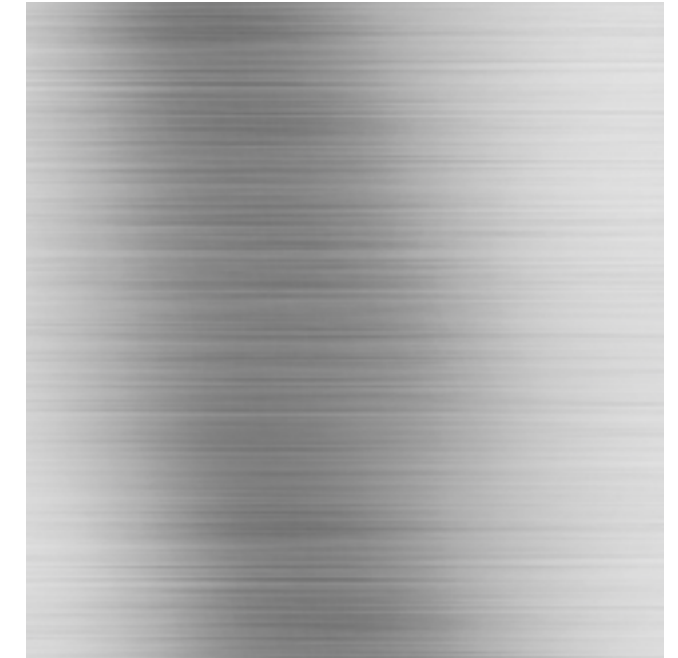
Aluminium which is polished to achieve a high gloss finish, then clear lacquered. Occasionally combined with chrome steel parts. The surface matches chrome.

Matt Chrome



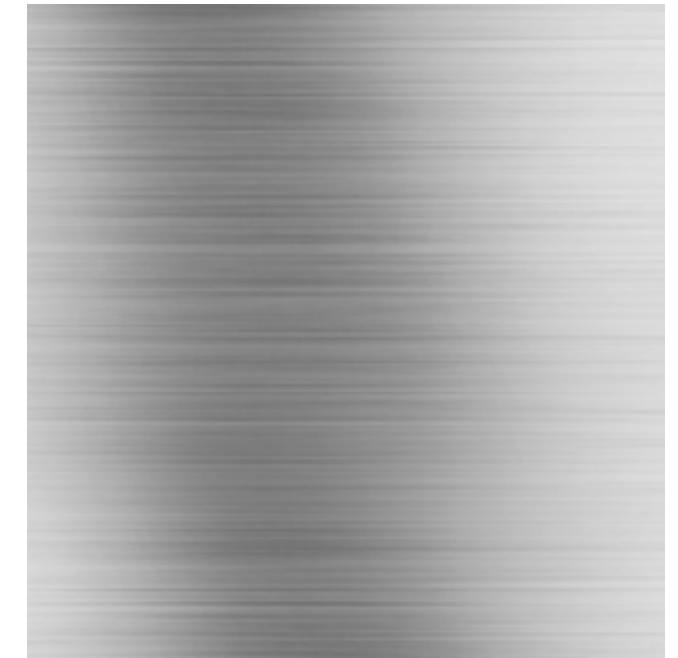
Steel in smooth finish, which is subsequently satin chromed (Chrome III) to achieve a matt surface.

Brushed stainless steel



Stainless steel in brushed finish. Grain structure will vary depending on product and size of the surface. The surface matches brushed chrome and brushed aluminium.

Brushed chrome/Brushed aluminium



Steel in brushed finish which is subsequently chromed and finished with a matt clear lacquer. Grain structure will vary depending on product and size of the surface. The surface matches brushed stainless steel and brushed aluminium.

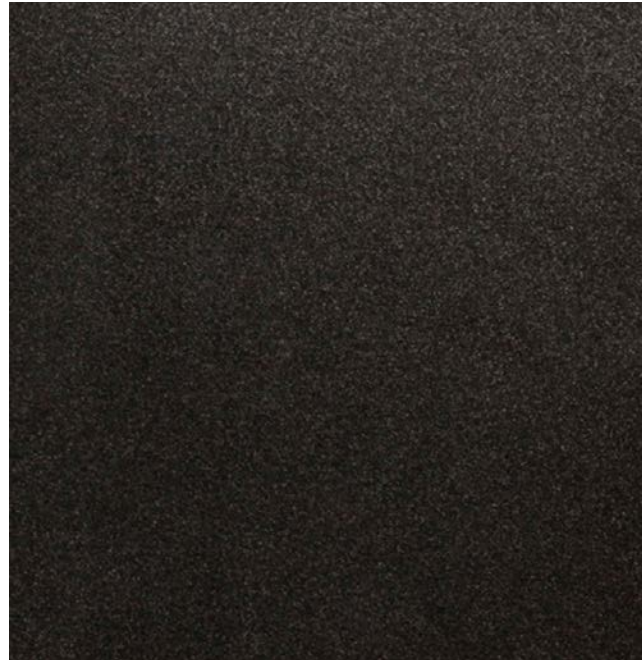
Aluminium in brushed finish, finished with a matt clear lacquer. Grain structure will vary depending on product and size of the surface. The surface matches brushed stainless steel and brushed chrome.

Black



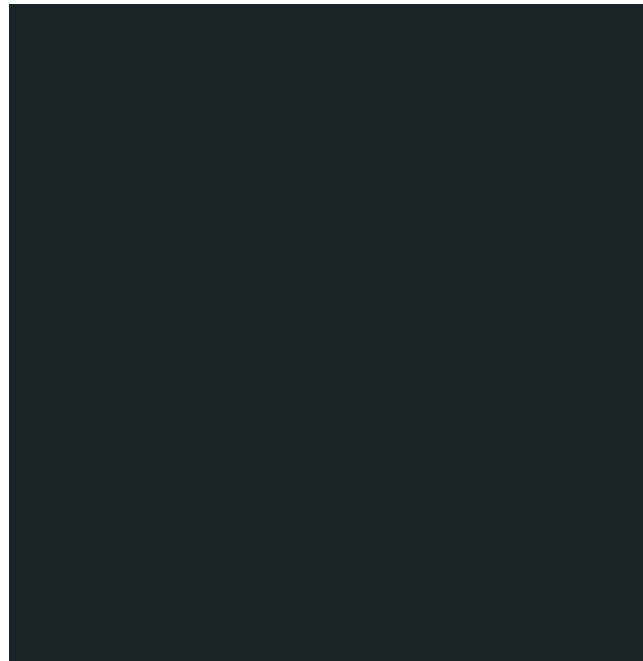
Powder-coated RAL 9005 with a smooth surface. Powder coating is the most environmentally-friendly surface finish available and can be used on both steel and aluminium parts.

Flint



Our Fredericia Flint surface finish is a special powder coat with a smooth surface. Flint can be compared with so-called "gunmetal", however, Flint has the environmentally-friendly features of powder coats, which makes the application universal. Flint can be used on both steel and aluminium parts.

Soft Black



Powder-coated RAL 7021 with a smooth surface in an off-black colour. Powder coating is the most environmentally-friendly surface finish available and can be used on both steel and aluminium parts.



Pato Executive by Welling/Ludvik
Leather: Max 98 Black
Base: Polished aluminium.

Application Matrix Metal

	Black	Flint	Polished Aluminium	Chrome	Matt Chrome	Brushed Chrome	Brushed Aluminium	Brushed Stainless Steel
A-chair Metal base	•				•			
Calmo Metal base	•				•			
Corona Chair	•					•		
Delphi Sofa							•	
EJ50 Sofa	•							•
EJ66 Coffee Table	•							•
EJ220 Sofa						•		
EJ280 Sofa						SB	•	
EJ288 Sofa							•	
EJ295 Chaise Sofa				•				
Eyes 4-leg	•							•
Eyes Cantilever	•							•
Eyes Swivel	•		•					
Flamingo Chair	•							•
Haiku	•							
Insula Coffee Table	•							
Konami Sofa	•							•
The Lynderup Chair	•			•				
Mesa Table	•							
Wegner Ox Chair	•					•		
Pal Table	•							•
Pato Office, Swivel & Executive	•		•					
Pato Sledge & 4-leg	•			•				
Piloti Stone		•						
Wegner Queen & Ox Chair	•							•
Spine Metal base	•							
Swoon Swivel	•		•					
Soborg Metal base	•			•				
Trinidad	•	•		•				
Vodder Chaise								•

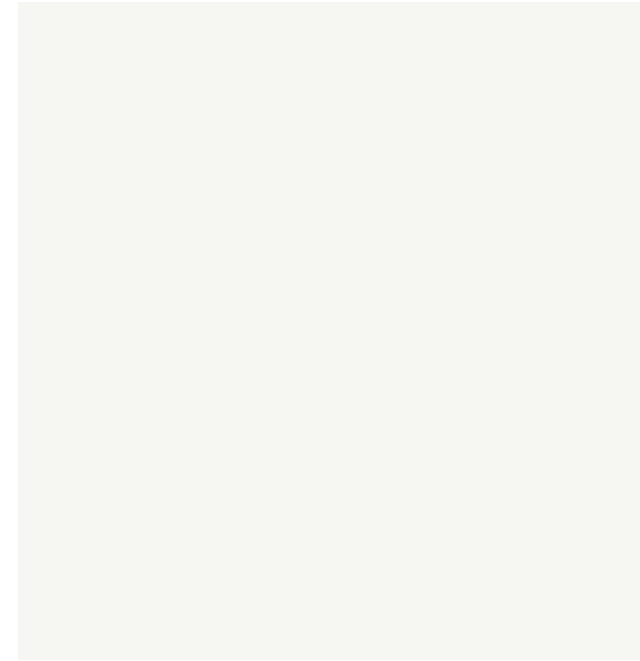
SB Sledge Base

Laminate & Linoleum

Ana Table by Arde
Table top: Almond Nano laminate
Wooden edge: Smoked oak stained
Wood: Smoked oak oil



White Nano laminate



Nano Laminate (Fenix 0032), sourced from the Italian company Fenix. A material known for its delicately matt, ultra-smooth surface. Nano Laminate has a self-repairing surface that "heals" minor scratches.

Black Nano laminate



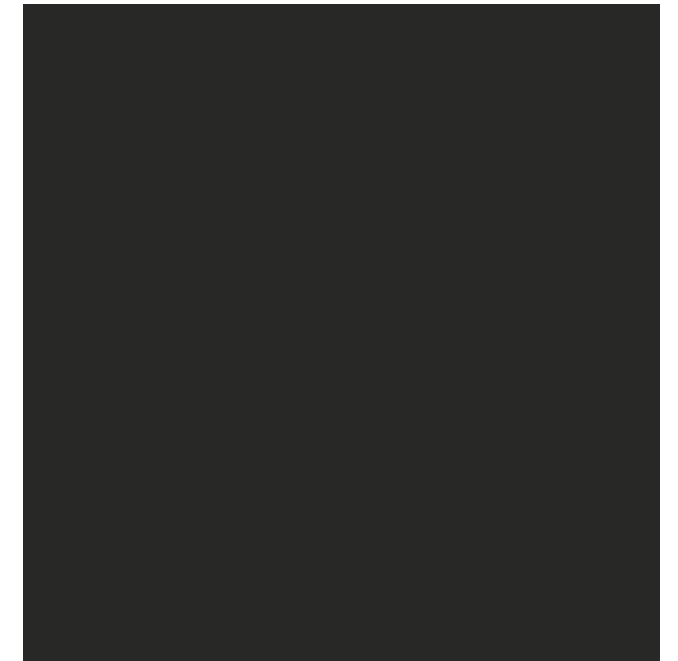
Nano Laminate (Fenix 0720), sourced from the Italian company Fenix. A material known for its delicately matt, ultra-smooth surface. Nano Laminate has a self-repairing surface that "heals" minor scratches.

Almond Nano laminate



Nano Laminate (Fenix 0717), sourced from the Italian company Fenix. A material known for its delicately matt, ultra-smooth surface. Nano Laminate has a self-repairing surface that "heals" minor scratches.

Black Linoleum/Black laminate



Black linoleum. Linoleum is a relatively soft material that can acquire press marks use, however these will for the most part disappear over time. Linoleum should be treated with a cleaner specific for linoleum table tops to maintain its appearance.

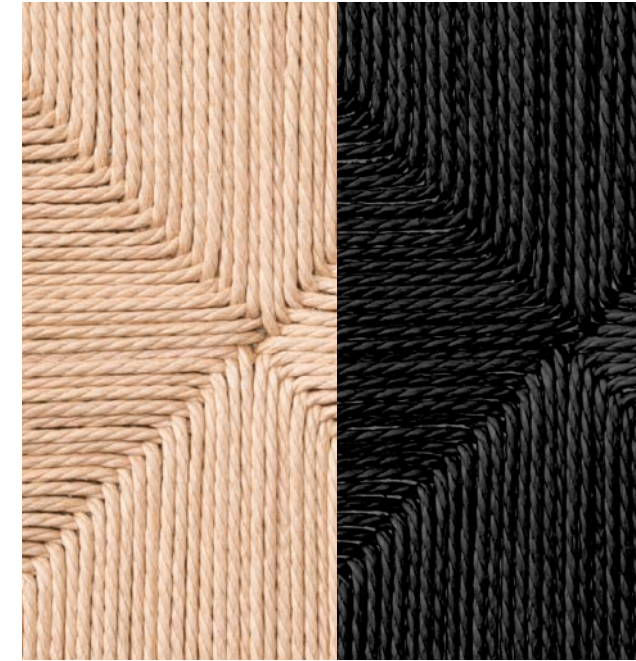
Black laminate. Black laminate with a smooth, flat, and easy-care surface with reduced gloss. A highly durable material with hardly any maintenance necessary.

Webbing

BM61 Chair by Børge Mogensen
Webbing: Natural Linen
Wood: Oak lacquered
Islets Dining Table by Maria Bruun
Wood: Oak light oil
Silhouette Mirror by OEO Studio
Wood: Walnut oil
Locus Bowl by Sofie Østerby

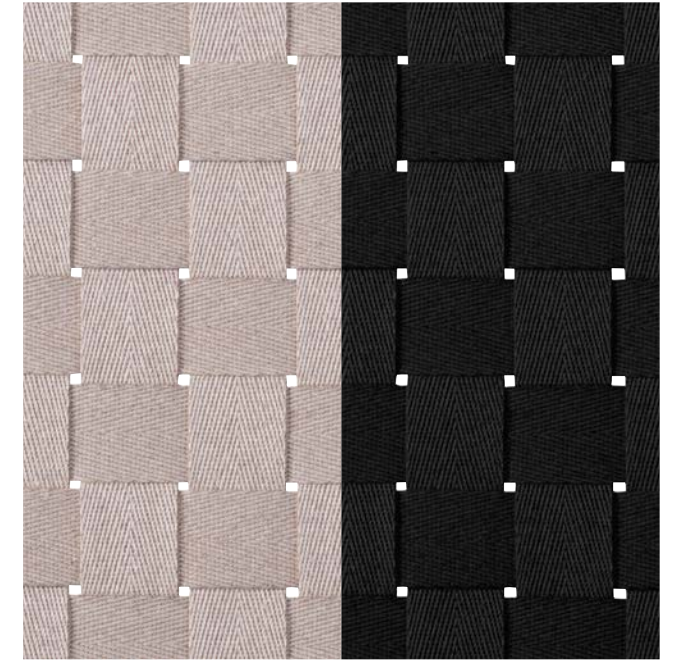


Natural Paper cord



A durable, natural material that will patinate with grace. The paper cord has a wax treatment which lightly protects it against dirt. Available in natural or black.

Linen webbing



Linen webbing has been used for furniture seats for centuries. It provides a lightweight chair and allows the body to ventilate when using the chair. The linen webbing is woven together with tight PP-strings in order to secure the stretch fastness over time. Available in natural or black.

Cane Wicker



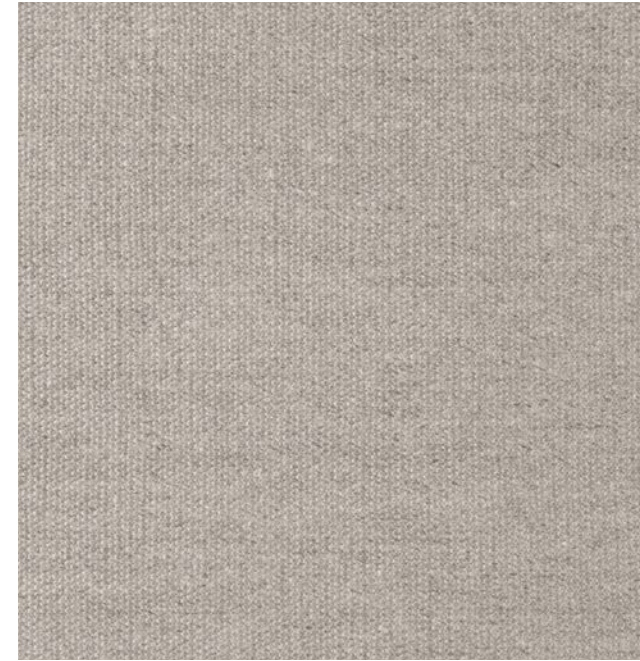
Cane wicker is a delicate material made from cane cut from the smooth top surface of the cane. Fredericia uses cane of the highest quality available sourced from Japan and Indonesia. Furniture with cane wicker should not be placed directly next to heating units such as fire places, radiators or in direct sunlight.

Canvas

Canvas Chair by Børge Mogensen
Fabric: Natural Canvas
Wood: Oak soap

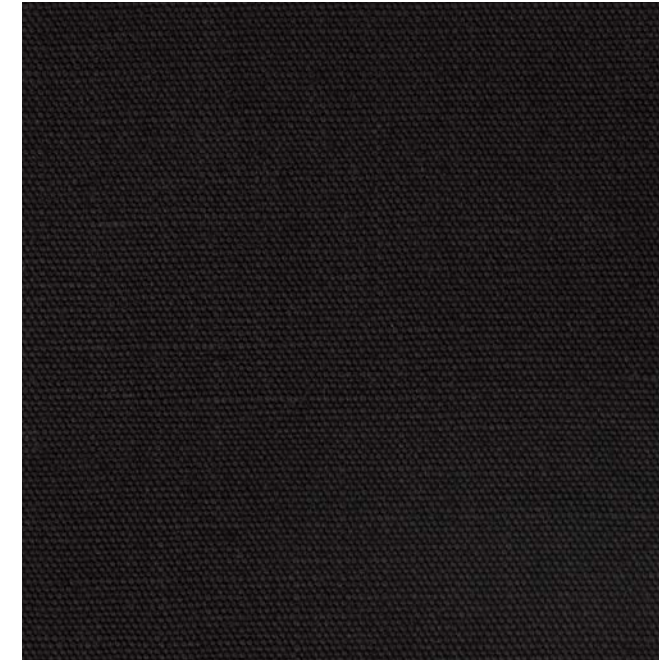


Natural Canvas



A classic and robust canvas made from 100% linen. While the canvas is pre-tretched to limit the process, the canvas will adjust to the user's body over time.

Black Canvas



A classic and robust canvas made from 100% linen. While the canvas is pre-tretched to limit the process, the canvas will adjust to the user's body over time.

Canvas Chair by Borge Mogensen
Fabric: Black Canvas
Wood: Oak black lacquered
Calmo 3 seater 80 Metal Base
Fabric: Ruskin 10
Base: Black powder coated steel
Tableau Coffee Table by Space Copenhagen
Dark Atlantico limestone



Pato Colours

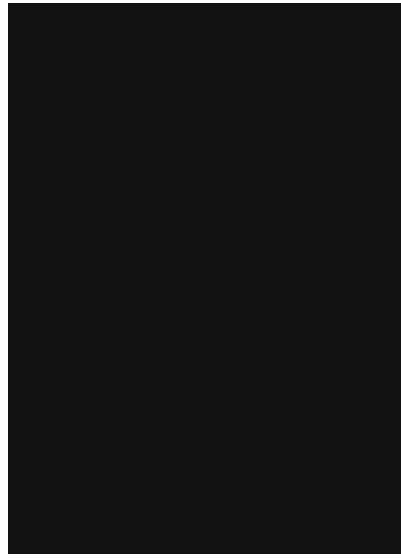
Black, White, Dark Grey, Quartz Grey, Stone, Sand, Ancient Green, Storm, Dark Red, Ocean

The Standard Colours are applied to coloured-through polypropylene (PP) in the Pato collections. Each standard colour is chosen to complement the Fredericia Colour Worlds, as well as the natural woods and leathers for which Fredericia is renowned.

Pato 4 leg Chair by Welling/Ludvik



Black



MATCH



Connect 60999

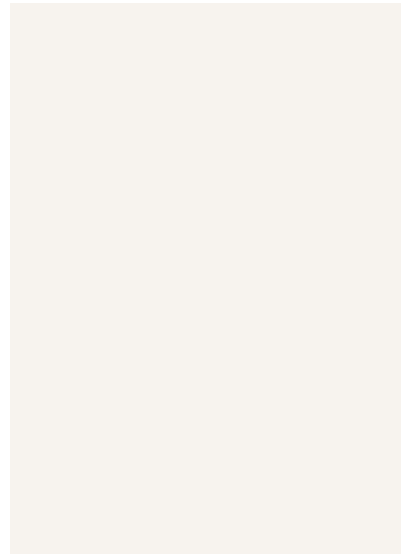


Re-wool 198



Omni 301 Black

White

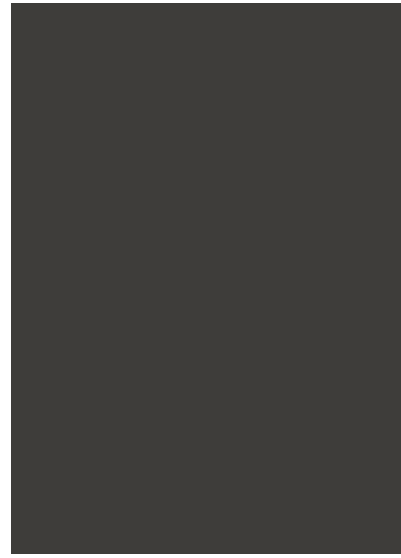


MATCH



Re-wool 108

Dark Grey



MATCH

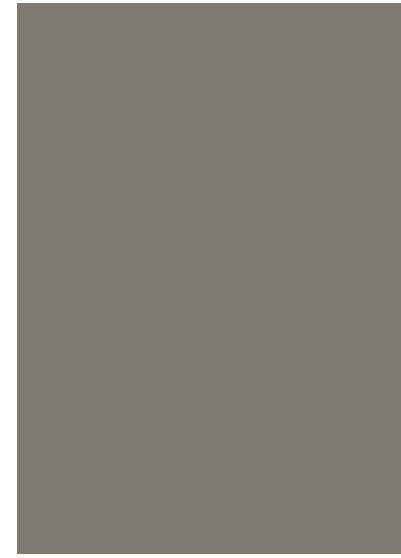


Remix 163



Capture 4201

Quartz Grey



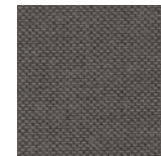
MATCH



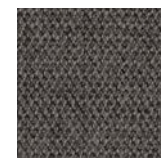
Connect 60146



Remix 143

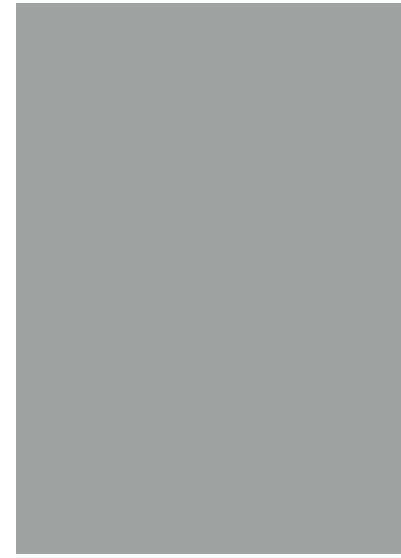


Re-wool 158



Capture 4201

Stone



MATCH



Connect 60147



Remix 123

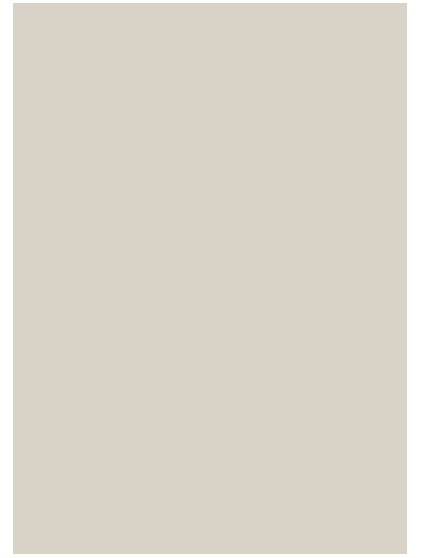


Re-wool 108



Capture 4101

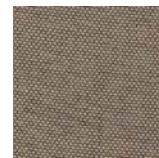
Sand



MATCH



Connect 61207

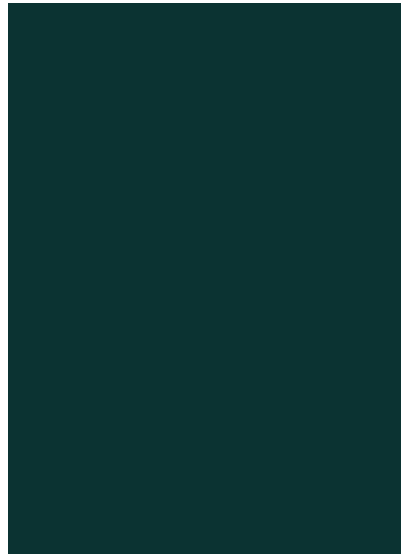


Re-wool 218



Capture 4101

Ancient Green



MATCH



Capture 7101

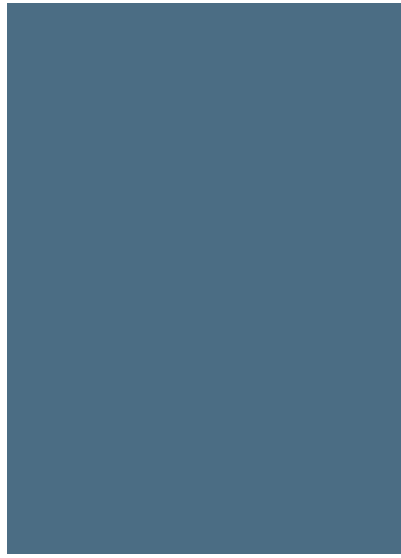


Remix 973



Connect 67115

Storm



MATCH



Connect 66205



Remix 733



Re-wool 768



Capture 4902

Dark Red



MATCH



Remix 662

Ocean



MATCH



Connect 67113



Re-wool 868