

# Cirque Pendant Ellipse Horizontal 90

CQPEEH90

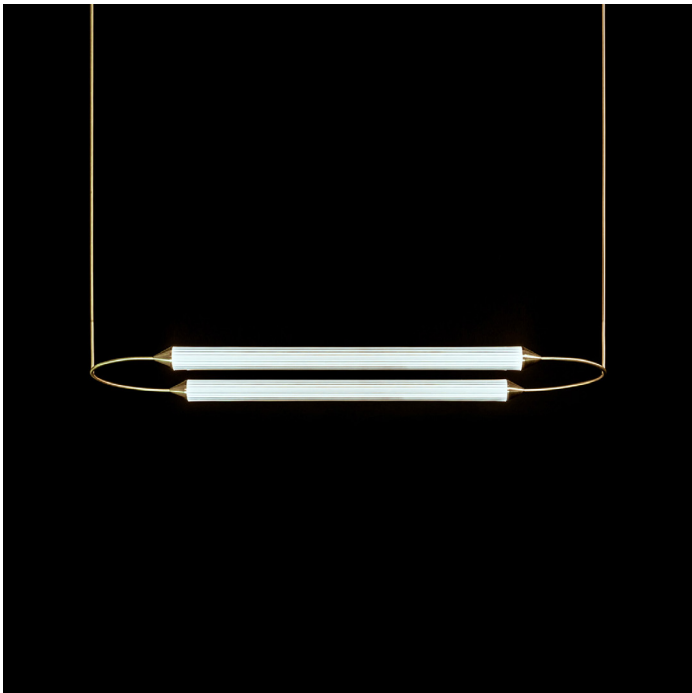
 IP20

**Materials**  
Transparent borosilicate glass and hand finished brass.

**Weight incl. canopy**  
~11.5 lbs

**Power Input**  
110-120V 50-60Hz




**Light Source (included)**  
4x Proprietary Cirque LEDs.  
18W, 1600 Lumens, 2700K warm white.  
CRI>95.



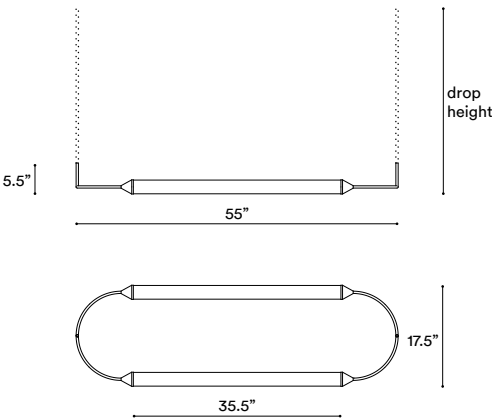
CIRQUE PENDANT ELLIPSE HORIZONTAL 90

## CONFIGURATION

### STEP 1 - CHOOSE YOUR METAL FINISH

	BRUSHED BRASS
	BRUSHED BRONZE
	BLACKENED BRASS

### SIZE (UNIT: IN)



### STEP 2 - CHOOSE YOUR DROP HEIGHT

DROP HEIGHT

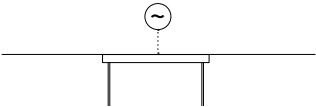
**Metal tube suspension**  
Specify your Drop height in inches to our sales team.

Note:  
No cable showing  
Not adjustable on site  
Minimum: 8"

MADE TO ORDER

+ **Single canopy with built-in phasecut driver.** Recommended.

W51" X D4.5" X H2"

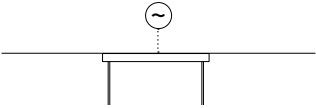


MATCHING FINISH

PHASECUT

+ **Single canopy with built-in driver and alternative dimmable standard,** if required by electrician.

W51" X D4.5" X H2"

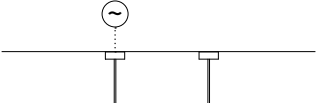


MATCHING FINISH

1-10 VOLT

+ **2 Canopies with built-in driver.** This requires electrician's approval.

Ø5" X H2"



MATCHING FINISH

PHASECUT

1-10 VOLT

# Cirque Pendant Ellipse Horizontal 120

CQPEEH120

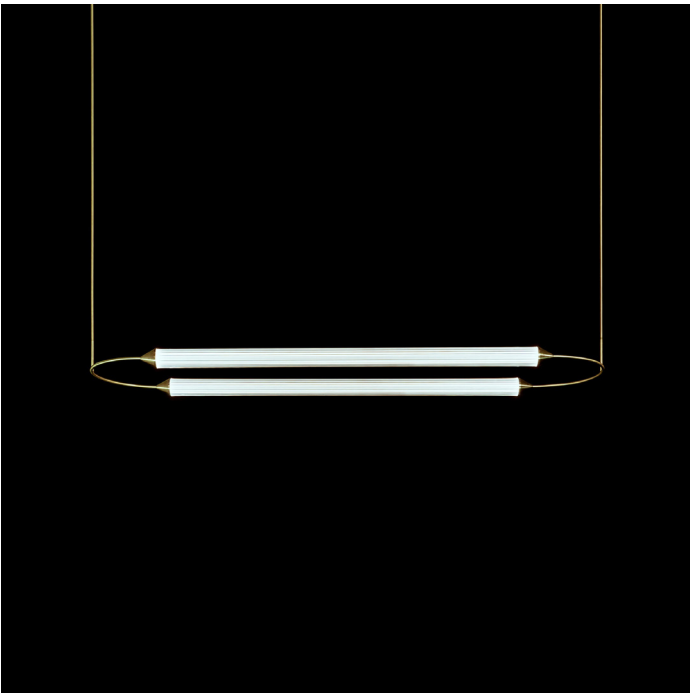
 IP20

**Materials**  
Transparent borosilicate glass and hand finished brass.

**Weight incl. canopy**  
~13.5 lbs

**Power Input**  
110-120V 50-60Hz




**Light Source (included)**  
4x Proprietary Cirque LEDs.  
18W, 3200 Lumens, 2700K warm white.  
CRI>95.



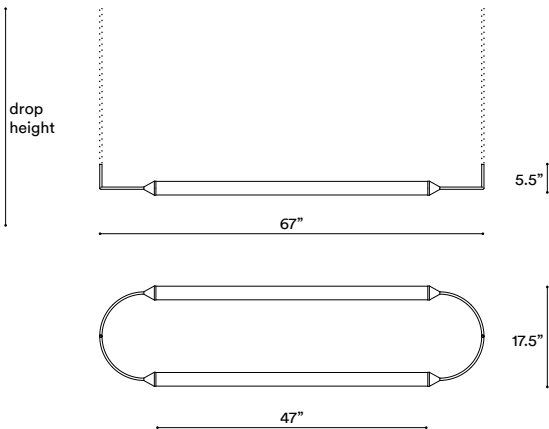
CIRQUE PENDANT ELLIPSE HORIZONTAL 120

## CONFIGURATION

### STEP 1 - CHOOSE YOUR METAL FINISH

	BRUSHED BRASS
	BRUSHED BRONZE
	BLACKENED BRASS

### SIZE (UNIT: IN)



### STEP 2 - CHOOSE YOUR DROP HEIGHT

DROP HEIGHT

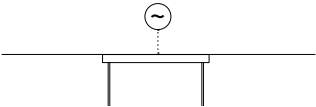
**Metal tube suspension**  
Specify your Drop height in inches to our sales team.

Note:  
No cable showing  
Not adjustable on site  
Minimum: 8"

MADE TO ORDER

+ **Single canopy with built-in phasecut driver.** Recommended.

W57" X D4.5" X H2"

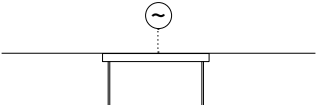


MATCHING FINISH

PHASECUT

+ **Single canopy with built-in driver and alternative dimmable standard,** if required by electrician.

W57" X D4.5" X H2"

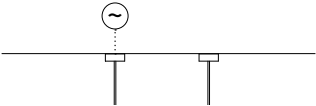


MATCHING FINISH

1-10 VOLT

+ **2 Canopies with built-in driver.** This requires electrician's approval.

Ø5" X H2"



MATCHING FINISH

PHASECUT

1-10 VOLT

# Cirque Pendant Ellipse Horizontal 75

CQPEEH75

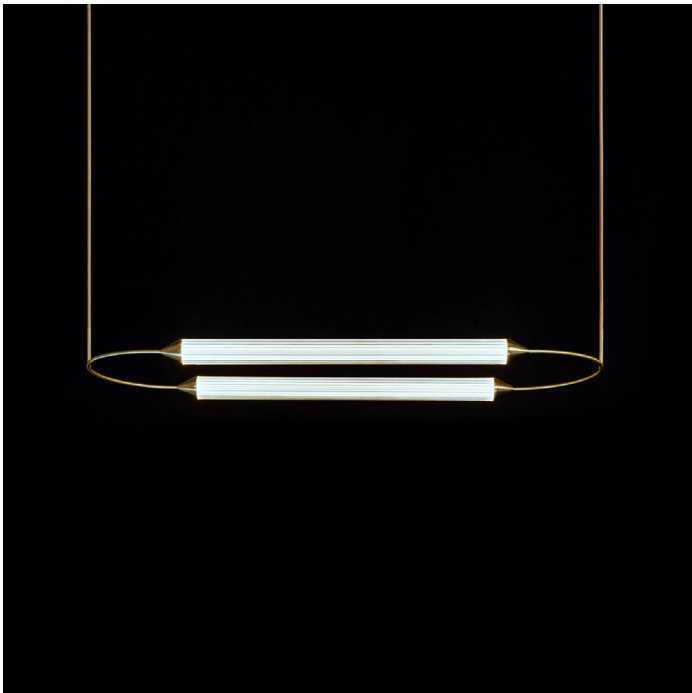
 IP20

**Materials**  
Transparent borosilicate glass and hand finished brass.

**Weight incl. canopy**  
~11 lbs

**Power Input**  
110-120V 50-60Hz




**Light Source (included)**  
4x Proprietary Cirque LEDs.  
18W, 1600 Lumens, 2700K warm white.  
CRI>95.



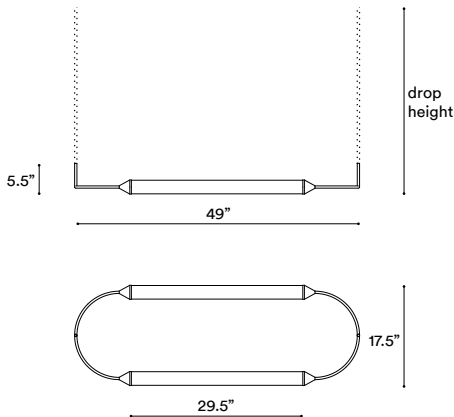
CIRQUE PENDANT ELLIPSE HORIZONTAL 75

## CONFIGURATION

### STEP 1 · CHOOSE YOUR METAL FINISH

	BRUSHED BRASS
	BRUSHED BRONZE
	BLACKENED BRASS

### SIZE (UNIT: IN)



### STEP 2 · CHOOSE YOUR DROP HEIGHT

DROP HEIGHT

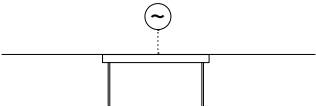
**Metal tube suspension**  
Specify your Drop height in inches to our sales team.

Note:  
No cable showing  
Not adjustable on site  
Minimum: 8"

MADE TO ORDER

+ **Single canopy with built-in phasecut driver.** Recommended.

W69" X D4.5" X H2"

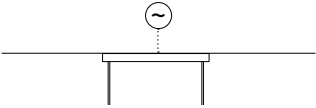


MATCHING FINISH

PHASECUT

+ **Single canopy with built-in driver and alternative dimmable standard,** if required by electrician.

W69" X D4.5" X H2"

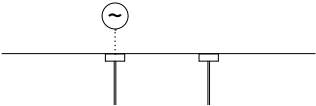


MATCHING FINISH

1-10 VOLT

+ **2 Canopies with built-in driver.** This requires electrician's approval.

Ø5" X H2"



MATCHING FINISH

PHASECUT

1-10 VOLT

# Cirque Pendant Ellipse Horizontal 150

CQPEEH150

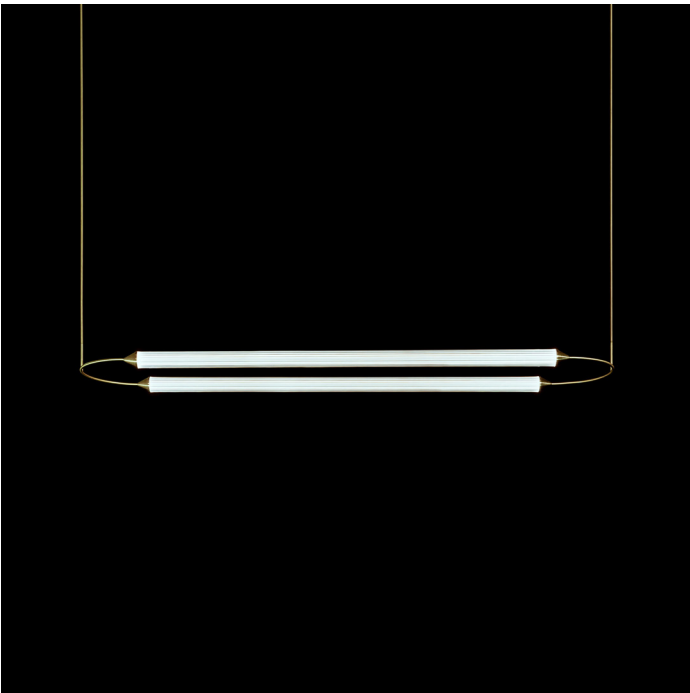
 IP20

**Materials**  
Transparent borosilicate glass and hand finished brass.

**Weight incl. canopy**  
~18 lbs

**Power Input**  
110-120V 50-60Hz




**Light Source (included)**  
4x Proprietary Cirque LEDs.  
18W, 1600 Lumens, 2700K warm white.  
CRI>95.



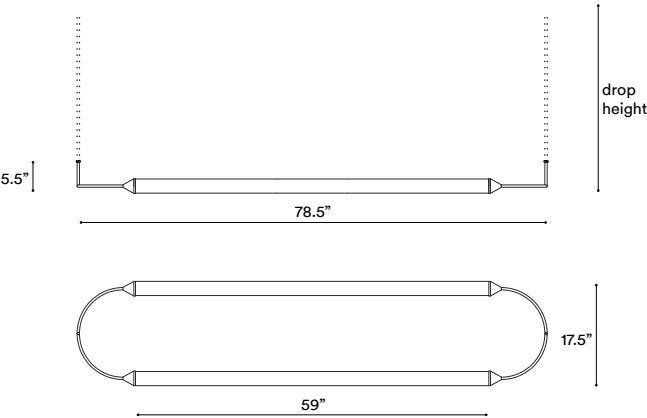
CIRQUE PENDANT ELLIPSE HORIZONTAL 150

## CONFIGURATION

### STEP 1 - CHOOSE YOUR METAL FINISH

	BRUSHED BRASS
	BRUSHED BRONZE
	BLACKENED BRASS

### SIZE (UNIT: IN)



### STEP 2 - CHOOSE YOUR DROP HEIGHT

DROP HEIGHT

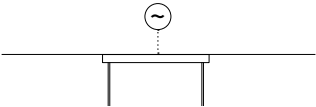
**Metal tube suspension**  
Specify your Drop height in inches to our sales team.

Note:  
No cable showing  
Not adjustable on site  
Minimum: 8"

MADE TO ORDER

+ **Single canopy with built-in phasecut driver.** Recommended.

W82" X D4.5" X H2"

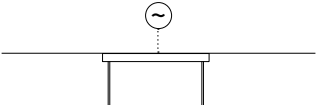


MATCHING FINISH

PHASECUT

+ **Single canopy with built-in driver and alternative dimmable standard,** if required by electrician.

W82" X D4.5" X H2"

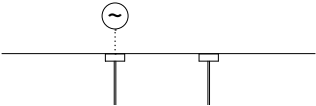


MATCHING FINISH

1-10 VOLT

+ **2 Canopies with built-in driver.** This requires electrician's approval.

Ø5" X H2"



MATCHING FINISH

PHASECUT

1-10 VOLT



**Brushed Brass**

Brass hand finished with horizontal brushing. Protected with a semi-gloss transparent coating.



**Brushed Bronze**

Brass with accelerated aging to become a bronze finish. Hand finished with horizontal brushing. Protected with a semi-matt transparent coating.



**Blackened Brass**

Brass with accelerated aging to become an extra dark chocolate finish. Hand finished with horizontal brushing. Protected with a semi-matt transparent coating.



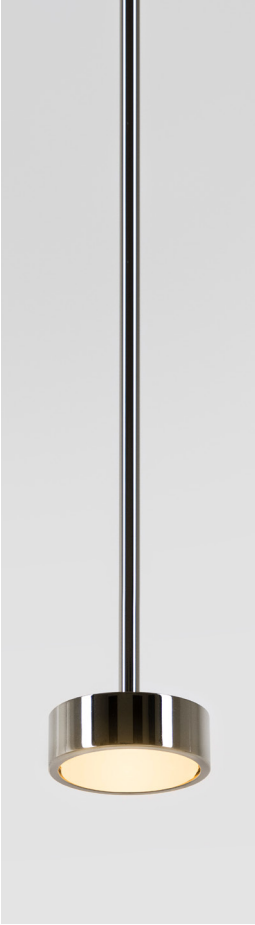
**Brushed Nickel**

Electroplated nickel over Brass with horizontal brushing. Protected with a semi-gloss transparent coating.



**Polished Nickel**

Electroplated Nickel over polished brass. Protected with a semi-gloss transparent coating.



**Custom Finish**

Our products can be customized with most metal finishes, please check with our design advisors if you have any particular requirement.

Please advise if our products are to be installed close to air conditioning vents or in windy or salty air conditions.